



Customer information packet

EM2275

5HP, 1160RPM, 3PH, 60HZ, 254U, 0748M, TEFC, F1

Class - None

Division - Not Applicable

Specifications

Enclosure	TEFC
Frame	254U
Frame Material	Iron
Frequency	60.00 Hz
Haz Area Class and Group	None
Haz Area Division	Not Applicable
Motor Letter Type	Three Phase
Output @ Frequency	5.000 HP @ 60 HZ
Phase	3
Synchronous Speed @ Frequency	1200 RPM @ 60 HZ
Voltage @ Frequency	460.0 V @ 60 HZ 230.0 V @ 60 HZ
Agency Approvals	CURUSEEV NEMA PREMIUM
Ambient Temperature	40 °C
Auxiliary Box	NO AUXILLARY BOX
Auxiliary Box Lead Termination	None
Base Indicator	Rigid
Bearing Grease Type	Polyrex EM (-20F +300F)
Blower	None
Current @ Voltage	14.600 A @ 230.0 V 15.800 A @ 208.0 V 7.300 A @ 460.0 V
Design Code	A
Drip Cover	No Drip Cover
Duty Rating	CONT
Efficiency @ 100% Load	90.2 %
Electrically Isolated Bearing	Not Electrically Isolated
Enclosure Modification	Severe Duty Features
Feedback Device	NO FEEDBACK
Front Face Code	Standard
Front Shaft Indicator	None

Part detail

Revision	H
Type	AC
Mech. spec.	07H287
Base	
Status	PRD/A
Elec. spec.	07WGX823
Layout	07LYH287
Eff. date	05-02-2024
CD Diagram	CD0005
Poles	06
Leads	9#14
Proprietary	False
Created date	02-23-2015

Heater Indicator	No Heater
High Voltage Full Load Amps	7.3 a
Insulation Class	F
Inverter Code	Inverter Ready
KVA Code	K
Lifting Lugs	Standard Lifting Lugs
Locked Bearing Indicator	No Locked Bearing
Motor Lead Exit	Ko Box
Motor Lead Quantity/Wire Size	9 @ 14 AWG
Motor Lead Termination	Flying Leads
Motor Standards	NEMA
Motor Type	0748M
Mounting Arrangement	F1
Number of Poles	6
Overall Length	20.82 IN
Power Factor	72
Product Family	General Purpose
Pulley End Bearing Type	Ball
Pulley Face Code	Standard
Pulley Shaft Indicator	Standard
Rodent Screen	None
Service Factor	1.15
Shaft Diameter	1.375 IN
Shaft Extension Location	Pulley End
Shaft Ground Indicator	No Shaft Grounding
Shaft Rotation	Reversible
Shaft Slinger Indicator	No Slinger
Speed	1160 rpm
Speed Code	Single Speed
Starting Method	Direct on line
Thermal Device - Bearing	None
Thermal Device - Winding	None
Vibration Sensor Indicator	No Vibration Sensor
Winding Thermal 1	None

Winding Thermal 2

None

Nameplate

NP1259L									
CAT.NO.	EM2275								
SPEC.	07H287X823G2								
HP	5								
VOLTS	230/460								
AMP	14.6/7.3								
RPM	1160								
FRAME	254U		HZ	60		PH	3		
SER.F.	1.15	CODE	K	DES	A	CL	F		
NEMA-NOM-EFF	90.2	PF	72						
RATING	40C AMB-CONT								
CC	010A								
DE	6309		ODE	6307					
ENCL	TEFC	SN							

AC Induction Motor Performance Data

Record # 45035

Typical performance - not guaranteed values

Winding: 07WGX823-R001		Type: 0748M		Enclosure: TEFC	
Nameplate Data			230 V, 60 Hz: Low Voltage Connection		
Rated Output (HP)	5	Full Load Torque	22.8 LB-FT		
Volts	230/460	Start Configuration	direct on line		
Full Load Amps	14.6/7.3	Breakdown Torque	77.4 LB-FT		
R.P.M.	1160	Pull-up Torque	46.7 LB-FT		
Hz	60 Phase	3	Locked-rotor Torque	56.1 LB-FT	
NEMA Design Code	A KVA Code	K	Starting Current	104 A	
Service Factor (S.F.)	1.15	No-load Current	7.4 A		
NEMA Nom. Eff.	90.2 Power Factor	72	Line-line Res. @ 25°C	0.419 Ω	
Rating - Duty	40C AMB-CONT		Temp. Rise @ Rated Load	50°C	
S.F. Amps			Temp. Rise @ S.F. Load	61°C	
			Locked-rotor Power Factor	22	
			Rotor inertia	1.19 LB-FT ²	

Load Characteristics 230 V, 60 Hz, 5 HP

% of Rated Load	25	50	75	100	125	150	S.F.
Power Factor	34	54	65	72	75	76	74
Efficiency	85.8	90.1	90.8	90.3	89.1	87.6	89.6
Speed	1190	1181	1173	1163	1151	1138	1156
Line amperes	8.02	9.58	11.8	14.6	17.5	20.9	16.3

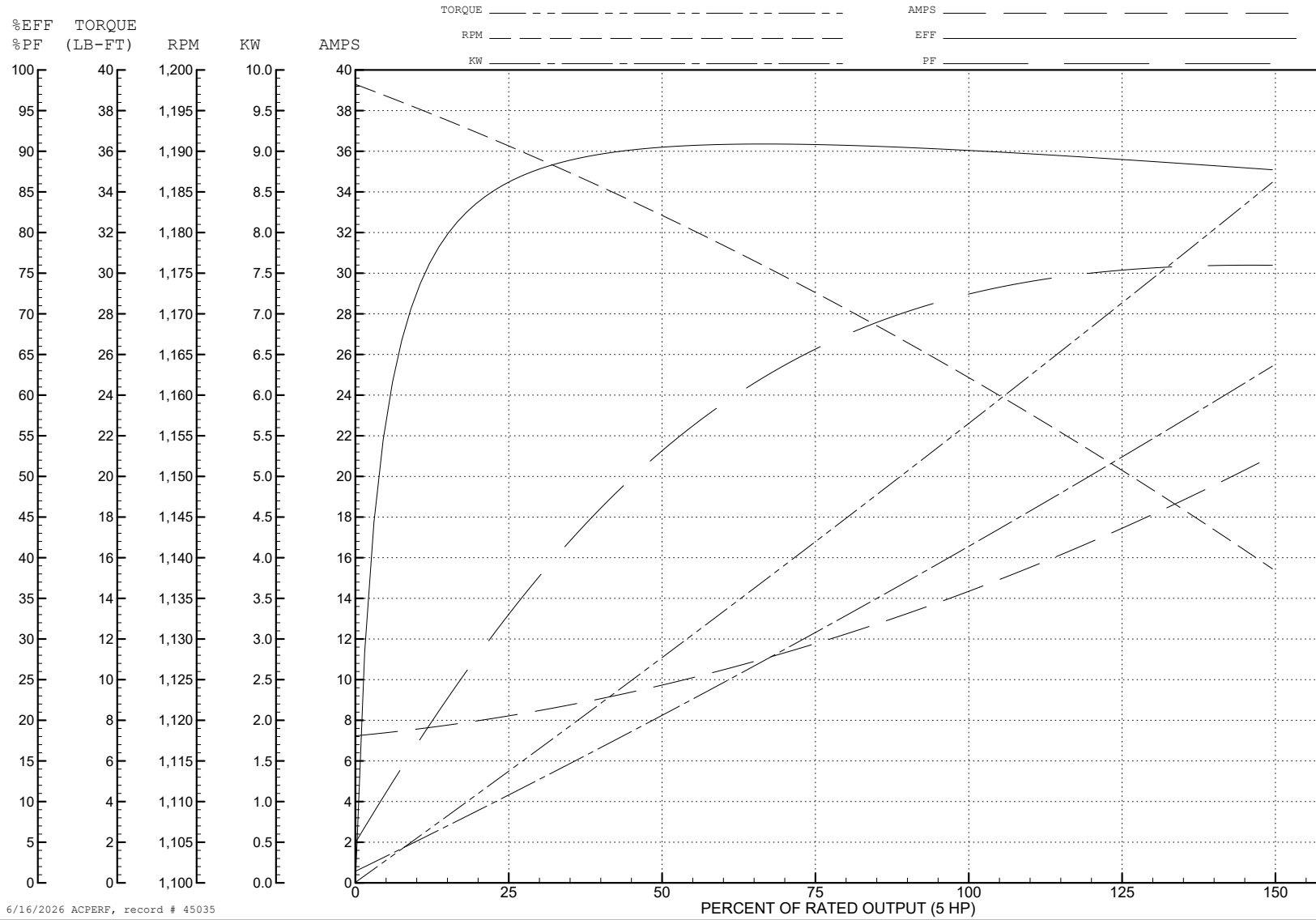
ABB Motors and Mechanical Inc.

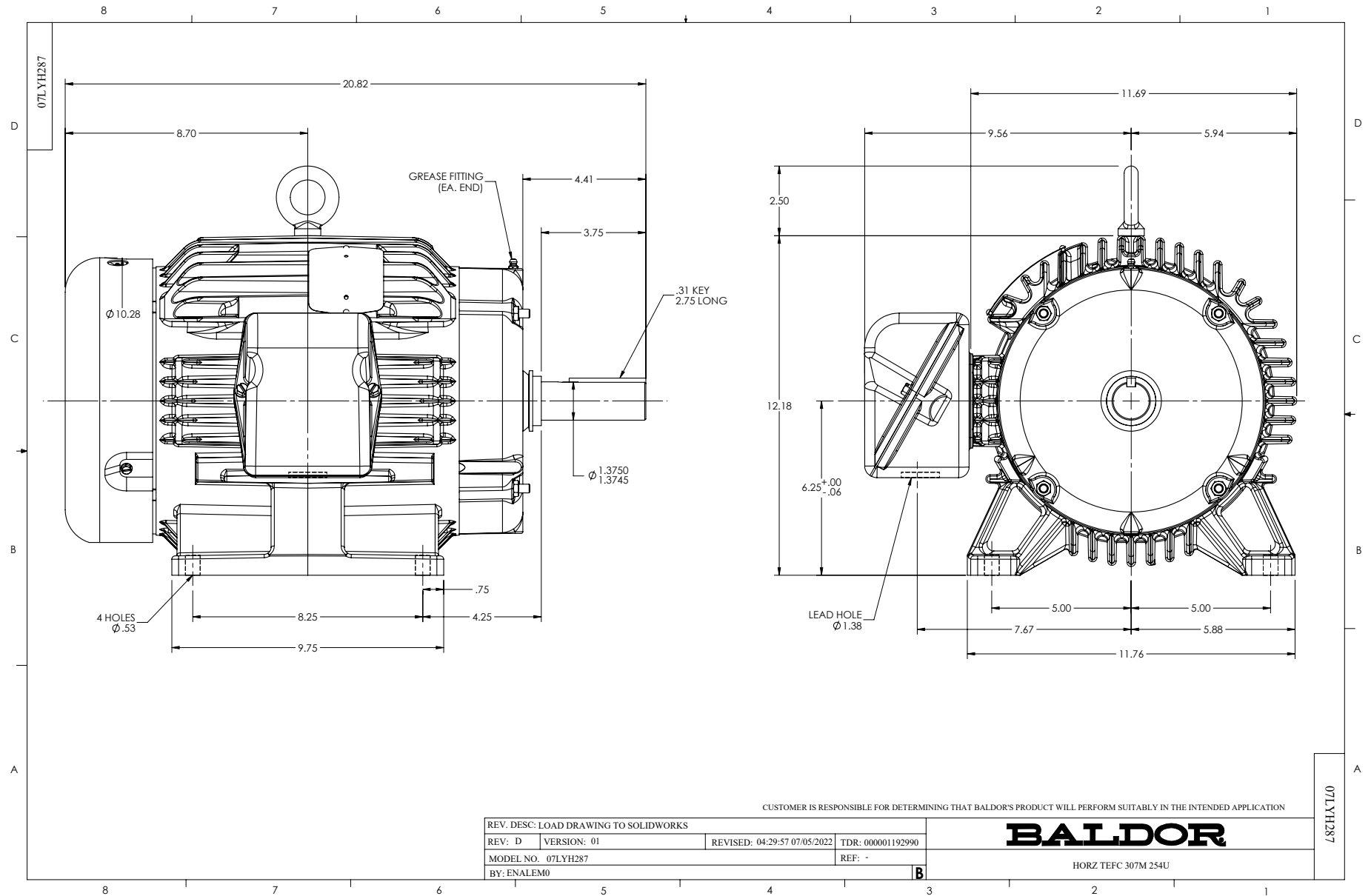
WINDING # 07WGX823

Typical performance - not guaranteed values.

5 HP 3 PH 60 HZ 1160 RPM 230 V 0748M

TORQUES (LB-FT): PO=77.4 PU=46.7 LR=56.1 LRA=104





CD0005

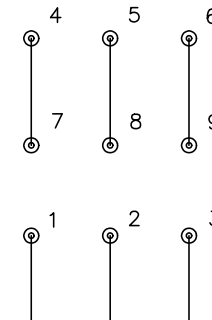


LOW VOLTAGE
(2Y)



LINE

HIGH VOLTAGE
(1Y)



LINE

NOTES:

1. INTERCHANGE ANY TWO LINE LEADS TO REVERSE ROTATION.
2. OPTIONAL THERMOSTATS ARE PROVIDED WHEN SPECIFIED.
3. ACTUAL NUMBER OF INTERNAL PARALLEL CIRCUITS MAY BE A MULTIPLE OF THOSE SHOWN ABOVE.
4. LEAD COLORS ARE OPTIONAL. LEADS MUST ALWAYS BE NUMBERED AS SHOWN.

CD0005

REV. DESC: REVISE TO SHOW OPTIONAL COLORS			
REV. LTR: E	BY: JLP	REVISED: 01/19/99 10:15	TDR: 0171435
S00000		FILE: AAA00005140	MDL: -
		MTL: -	

BALDOR ELECTRIC Co.

3PH, DV, 9 LEADS