

**BALDOR • RELIANCE**

---

# Customer information packet

## EM2238

10HP, 1775RPM, 3PH, 60HZ, 256U, 0936M, TEFC, F1

Class - None

Division - Not Applicable

Copyright © All product information within this document is subject to ABB Motors and Mechanical Inc. copyright © protection, unless otherwise noted.

5/29/2024 11:26:02 PM

## Specifications

Enclosure	TEFC
Frame	256U
Frame Material	Iron
Frequency	60.00 Hz
Haz Area Class and Group	None
Haz Area Division	Not Applicable
Motor Letter Type	Three Phase
Output @ Frequency	10.000 HP @ 60 HZ
Phase	3
Synchronous Speed @ Frequency	1800 RPM @ 60 HZ
Voltage @ Frequency	460.0 V @ 60 HZ 230.0 V @ 60 HZ
Agency Approvals	CSA CSA EEV UR
Ambient Temperature	40 °C
Auxillary Box	No Auxillary Box
Auxillary Box Lead Termination	None
Base Indicator	Rigid
Bearing Grease Type	Polyrex EM (-20F +300F)
Blower	None
Current @ Voltage	26.000 A @ 230.0 V 27.000 A @ 208.0 V 13.000 A @ 460.0 V
Design Code	A
Drip Cover	No Drip Cover
Duty Rating	CONT
Efficiency @ 100% Load	91.7 %
Electrically Isolated Bearing	Not Electrically Isolated
Feedback Device	NO FEEDBACK
Front Face Code	Standard
Front Shaft Indicator	None

## Part detail

Revision	T
Type	AC
Mech. spec.	09C111
Base	
Status	PRD/A
Elec. spec.	09WGT049
Layout	09LYC111
Eff. date	11-14-2023
CD Diagram	CD0005
Poles	04
Leads	9#12
Proprietary	False
Created date	02-21-2015

Heater Indicator	No Heater
High Voltage Full Load Amps	13.0 a
Insulation Class	F
Inverter Code	Inverter Ready
KVA Code	K
Lifting Lugs	Standard Lifting Lugs
Locked Bearing Indicator	Locked Bearing
Motor Lead Exit	Ko Box
Motor Lead Quantity/Wire Size	9 @ 12 AWG
Motor Lead Termination	Flying Leads
Motor Standards	NEMA
Motor Type	0936M
Mounting Arrangement	F1
Number of Poles	4
Overall Length	23.03 IN
Power Factor	78
Product Family	General Purpose
Pulley End Bearing Type	Ball
Pulley Face Code	Standard
Pulley Shaft Indicator	Standard
Rodent Screen	None
Service Factor	1.15
Shaft Diameter	1.375 IN
Shaft Extension Location	Pulley End
Shaft Ground Indicator	No Shaft Grounding
Shaft Rotation	Reversible
Shaft Slinger Indicator	Shaft Slinger
Speed	1775 rpm
Speed Code	Single Speed
Starting Method	Direct on line
Thermal Device - Bearing	None
Thermal Device - Winding	None
Vibration Sensor Indicator	No Vibration Sensor
Winding Thermal 1	None

**Winding Thermal 2**

**None**

---

**Nameplate**

<b>NP1259L</b>									
<b>CAT.NO.</b>	EM2238								
<b>SPEC.</b>	09C111T049G1								
<b>HP</b>	10								
<b>VOLTS</b>	230/460								
<b>AMP</b>	26/13								
<b>RPM</b>	1775								
<b>FRAME</b>	256U		<b>HZ</b>	60		<b>PH</b>	3		
<b>SER.F.</b>	1.15	<b>CODE</b>	K	<b>DES</b>	A	<b>CL</b>	F		
<b>NEMA-NOM-EFF</b>	91.7	<b>PF</b>	78						
<b>RATING</b>	40C AMB-CONT								
<b>CC</b>	010A								
<b>DE</b>	6309		<b>ODE</b>	6208					
<b>ENCL</b>	TEFC	<b>SN</b>							

**AC Induction Motor Performance Data**

Record # 44821

Typical performance - not guaranteed values

Winding: 09WGT049-R001		Type: 0936M	Enclosure: TEFC
<b>Nameplate Data</b>		<b>460 V, 60 Hz: High Voltage Connection</b>	
Rated Output (HP)	10	Full Load Torque	29.4 LB-FT
Volts	230/460	Start Configuration	direct on line
Full Load Amps	26/13	Breakdown Torque	129 LB-FT
R.P.M.	1775	Pull-up Torque	53.5 LB-FT
Hz	60 Phase	Locked-rotor Torque	67.6 LB-FT
NEMA Design Code	A KVA Code	Starting Current	102 A
Service Factor (S.F.)	1.15	No-load Current	6.48 A
NEMA Nom. Eff.	91.7 Power Factor	Line-line Res. @ 25°C	0.753 Ω
Rating - Duty	40C AMB-CONT	Temp. Rise @ Rated Load	31°C
S.F. Amps		Temp. Rise @ S.F. Load	37°C
		Locked-rotor Power Factor	35.3
		Rotor inertia	1.57 LB-FT <sup>2</sup>

**Load Characteristics 460 V, 60 Hz, 10 HP**

% of Rated Load	25	50	75	100	125	150	S.F.
Power Factor	39	61	73	78	82	84	80
Efficiency	84.4	90.3	92	92.1	91.7	91.2	91.9
Speed	1795	1789	1783	1776	1769	1762	1772
Line amperes	7.06	8.44	10.4	12.9	15.5	18.2	14.5

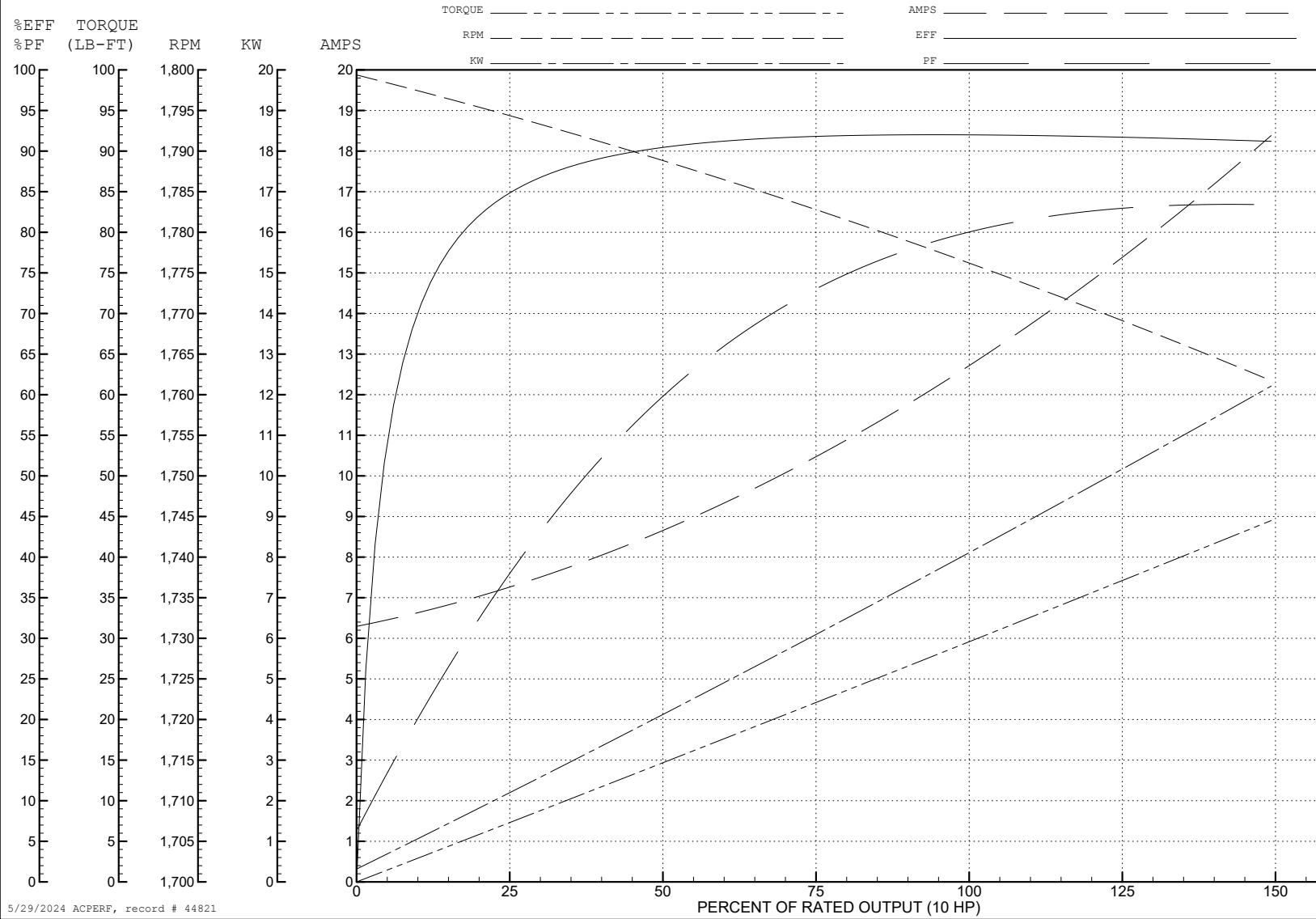
ABB Motors and Mechanical Inc.

WINDING # 09WGT049

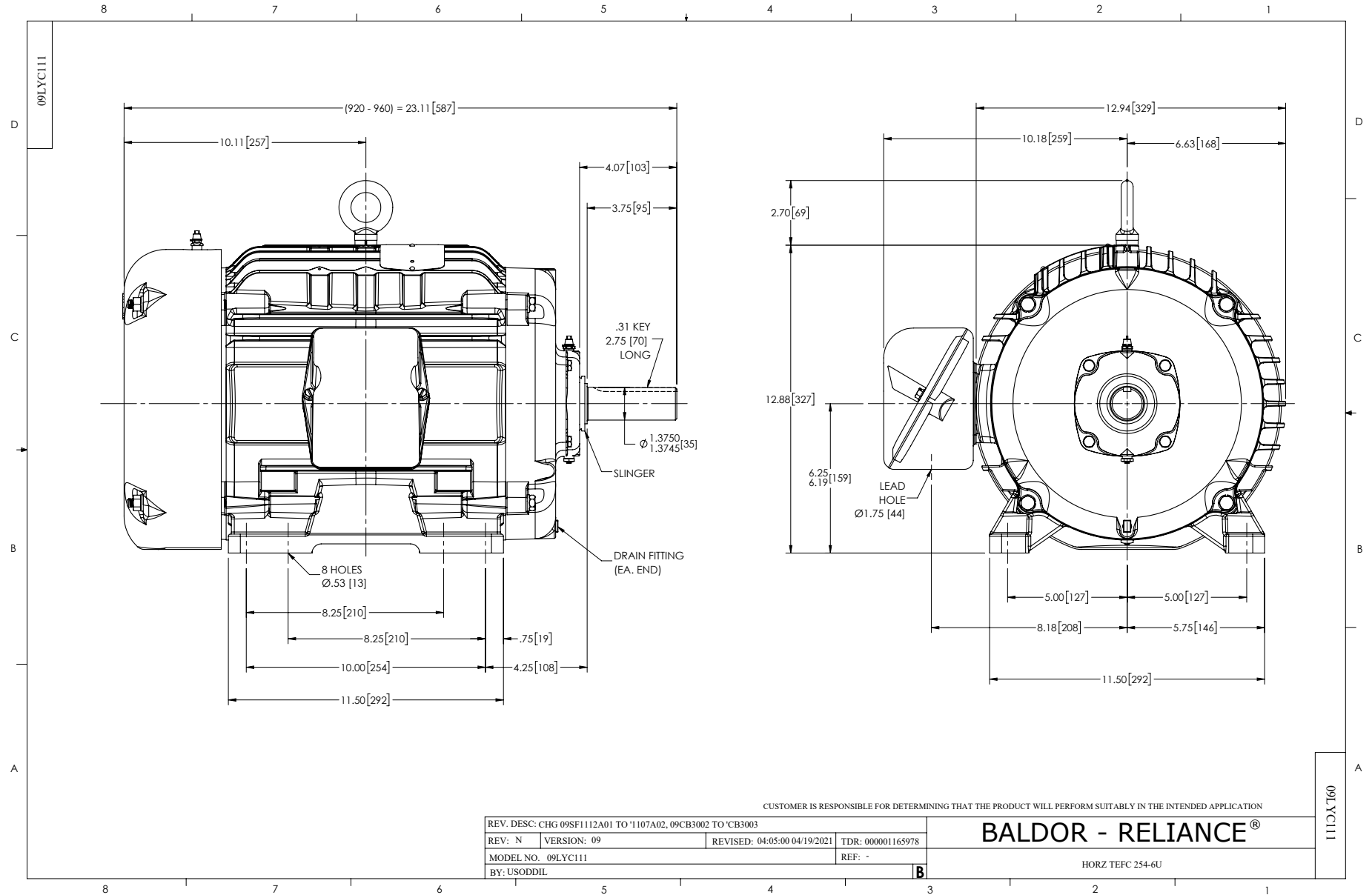
Typical performance - not guaranteed values.

10 HP 3 PH 60 HZ 1775 RPM 460 V 0936M

TORQUES (LB-FT): PO=129 PU=53.5 LR=67.6 LRA=102



5/29/2024 ACPERF, record # 44821





CD0005



LOW VOLTAGE  
(2Y)



LINE

HIGH VOLTAGE  
(1Y)



LINE

**NOTES:**

1. INTERCHANGE ANY TWO LINE LEADS TO REVERSE ROTATION.
2. OPTIONAL THERMOSTATS ARE PROVIDED WHEN SPECIFIED.
3. ACTUAL NUMBER OF INTERNAL PARALLEL CIRCUITS MAY BE A MULTIPLE OF THOSE SHOWN ABOVE.
4. LEAD COLORS ARE OPTIONAL. LEADS MUST ALWAYS BE NUMBERED AS SHOWN.

CD0005

REV. DESC: REVISE TO SHOW OPTIONAL COLORS			
REV. LTR: E	BY: JLP	REVISED: 01/19/99 10:15	TDR: 0171435
S00000		FILE: AAA00005140	MDL: -
		MTL: -	

**BALDOR ELECTRIC Co.**

3PH, DV, 9 LEADS