



---

# Customer information packet

## EL3609T

3HP, 1755RPM, 1PH, 60HZ, 184T, 3640LC, TEFC, F1

Class - None

Division - Not Applicable

## Specifications

Enclosure	TEFC
Frame	184T
Frame Material	Steel
Frequency	60.00 Hz
Haz Area Class and Group	None
Haz Area Division	Not Applicable
Motor Letter Type	Cap Start, Cap Run
Output @ Frequency	3.000 HP @ 60 HZ
Phase	1
Synchronous Speed @ Frequency	1800 RPM @ 60 HZ
Voltage @ Frequency	230.0 V @ 60 HZ
Agency Approvals	CSA CSA EEV NEMA_PREMIUM UR
Ambient Temperature	40 °C
Auxillary Box	No Auxillary Box
Auxillary Box Lead Termination	None
Base Indicator	Rigid
Bearing Grease Type	Polyrex EM (-20F +300F)
Blower	None
Current @ Voltage	11.800 A @ 230.0 V
Design Code	L
Drip Cover	No Drip Cover
Duty Rating	CONT
Efficiency @ 100% Load	85.5 %
Electrically Isolated Bearing	Not Electrically Isolated
Feedback Device	NO FEEDBACK
Front Face Code	Standard
Front Shaft Indicator	None
Heater Indicator	No Heater
High Voltage Full Load Amps	11.8 a

## Part detail

Revision	AU
Type	AC
Mech. spec.	36E004
Base	
Status	PRD/A
Elec. spec.	36WGY528
Layout	36LYE004
Eff. date	01-13-2025
CD Diagram	CD0017A02
Poles	04
Leads	2#14 A PH,2#16 B PH
Proprietary	False
Created date	01-01-0001

<b>Insulation Class</b>	F
<b>Inverter Code</b>	Not Inverter
<b>KVA Code</b>	H
<b>Lifting Lugs</b>	No Lifting Lugs
<b>Locked Bearing Indicator</b>	No Locked Bearing
<b>Motor Lead Exit</b>	Ko Box
<b>Motor Lead Quantity/Wire Size</b>	2 @ 14 AWG, A PH
<b>Motor Lead Termination</b>	Flying Leads
<b>Motor Standards</b>	NEMA
<b>Motor Type</b>	3640LC
<b>Mounting Arrangement</b>	F1
<b>Number of Poles</b>	4
<b>Overall Length</b>	18.06 IN
<b>Power Factor</b>	96
<b>Product Family</b>	General Purpose
<b>Pulley End Bearing Type</b>	Ball
<b>Pulley Face Code</b>	Standard
<b>Pulley Shaft Indicator</b>	Standard
<b>Rodent Screen</b>	None
<b>Service Factor</b>	1.15
<b>Shaft Diameter</b>	1.125 IN
<b>Shaft Extension Location</b>	Pulley End
<b>Shaft Ground Indicator</b>	No Shaft Grounding
<b>Shaft Rotation</b>	Reversible
<b>Shaft Slinger Indicator</b>	No Slinger
<b>Speed</b>	1755 rpm
<b>Speed Code</b>	Single Speed
<b>Starting Method</b>	Direct on line
<b>Thermal Device - Bearing</b>	None
<b>Thermal Device - Winding</b>	None
<b>Vibration Sensor Indicator</b>	No Vibration Sensor
<b>Winding Thermal 1</b>	None
<b>Winding Thermal 2</b>	None

**Nameplate**

<b>NP2116L</b>									
<b>CAT.NO.</b>	EL3609T								
<b>SPEC.</b>	36E004Y528E7								
<b>HP</b>	3								
<b>VOLTS</b>	230								
<b>AMP</b>	11.8								
<b>RPM</b>	1755								
<b>FRAME</b>	184T			<b>HZ</b>	60		<b>PH</b>	1	
<b>SER.F.</b>	1.15	<b>CODE</b>	H	<b>DES</b>	L	<b>CL</b>	F		
<b>NEMA-NOM-EFF</b>	85.5	<b>PF</b>	96						
<b>RATING</b>	40C AMB-CONT								
<b>CC</b>									
<b>DE</b>	6206	<b>ODE</b>	6205						
<b>ENCL</b>	TEFC	<b>SN</b>							

**Accessories**

<b>Part number</b>	<b>Description</b>	<b>Multiplier</b>
36-3301	C FACE KIT	A8
36EP1304A62SP	FLANGE MTD ENDPLATE 182-4TD -ENCL (LESS	A8

**AC Induction Motor Performance Data**

Record # 11392

Typical performance - not guaranteed values

Winding: 36WGY528-R001		Type: 3640LC	Enclosure: TEFC	
<b>Nameplate Data</b>			<b>230 V, 60 Hz: Single Voltage Motor</b>	
Rated Output (HP)	3	Full Load Torque	9 LB-FT	
Volts	230	Start Configuration	direct on line	
Full Load Amps	11.8	Breakdown Torque	21 LB-FT	
R.P.M.	1755	Pull-up Torque	18 LB-FT	
Hz	60 Phase	Locked-rotor Torque	25 LB-FT	
NEMA Design Code	L KVA Code	Starting Current	85 A	
Service Factor (S.F.)	1.15	No-load Current	1.9 A	
NEMA Nom. Eff.	85.5 Power Factor	Line-line Res. @ 25°C	0.662 Ω A Ph 1.52 Ω B Ph	
Rating - Duty	40C AMB-CONT	Temp. Rise @ Rated Load	59°C	
S.F. Amps		Temp. Rise @ S.F. Load	75°C	

**Load Characteristics 230 V, 60 Hz, 3 HP**

% of Rated Load	25	50	75	100	125	150	S.F.
Power Factor	92	96	97	97	96	96	95
Efficiency	71	83.1	85.9	85.7	83.6	80	84.4
Speed	1787	1775	1762	1745	1728	1705	1735
Line amperes	3.7	6.1	8.9	11.8	15.3	19.5	14.1

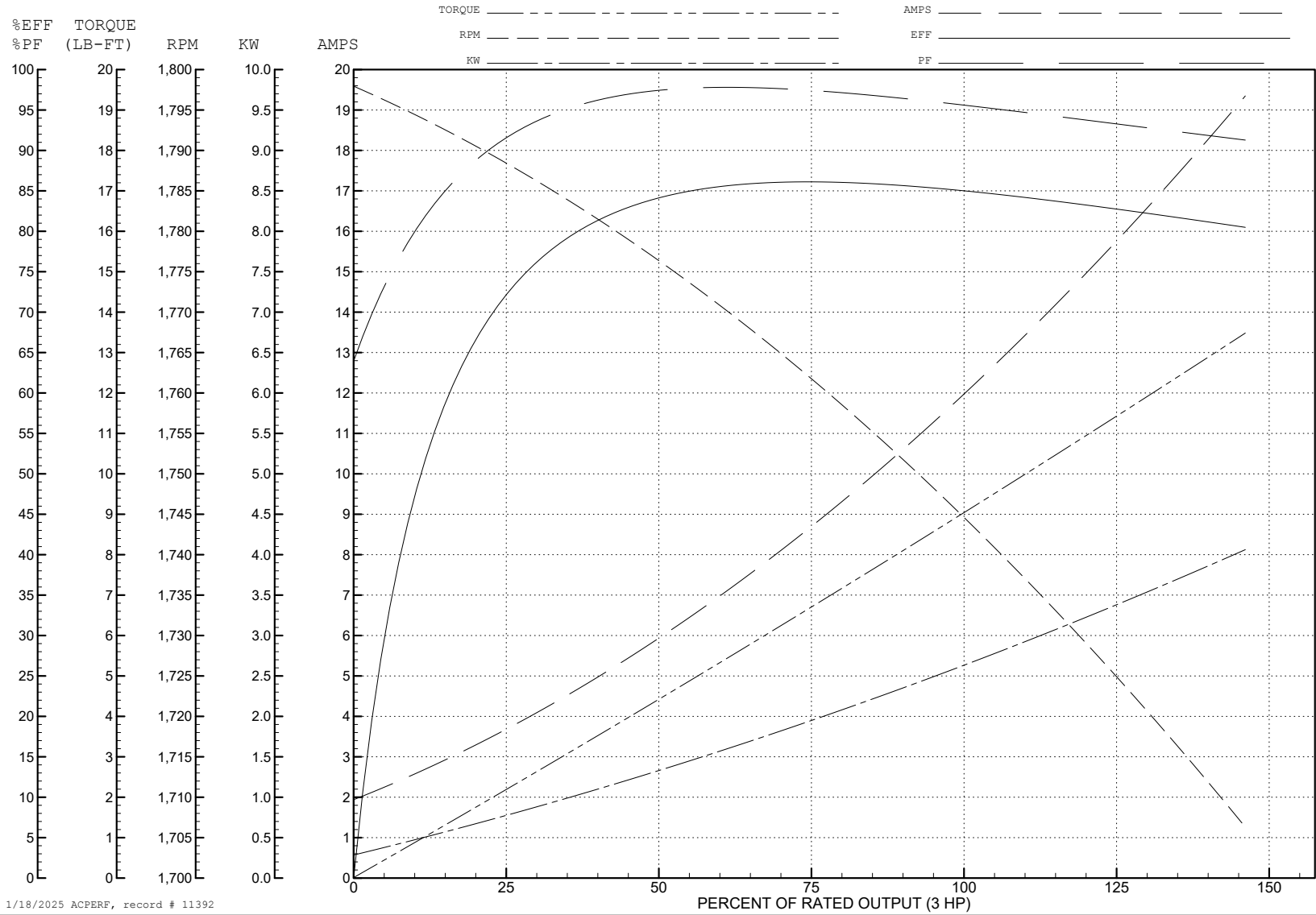
ABB Motors and Mechanical Inc.

WINDING # 36WGY528

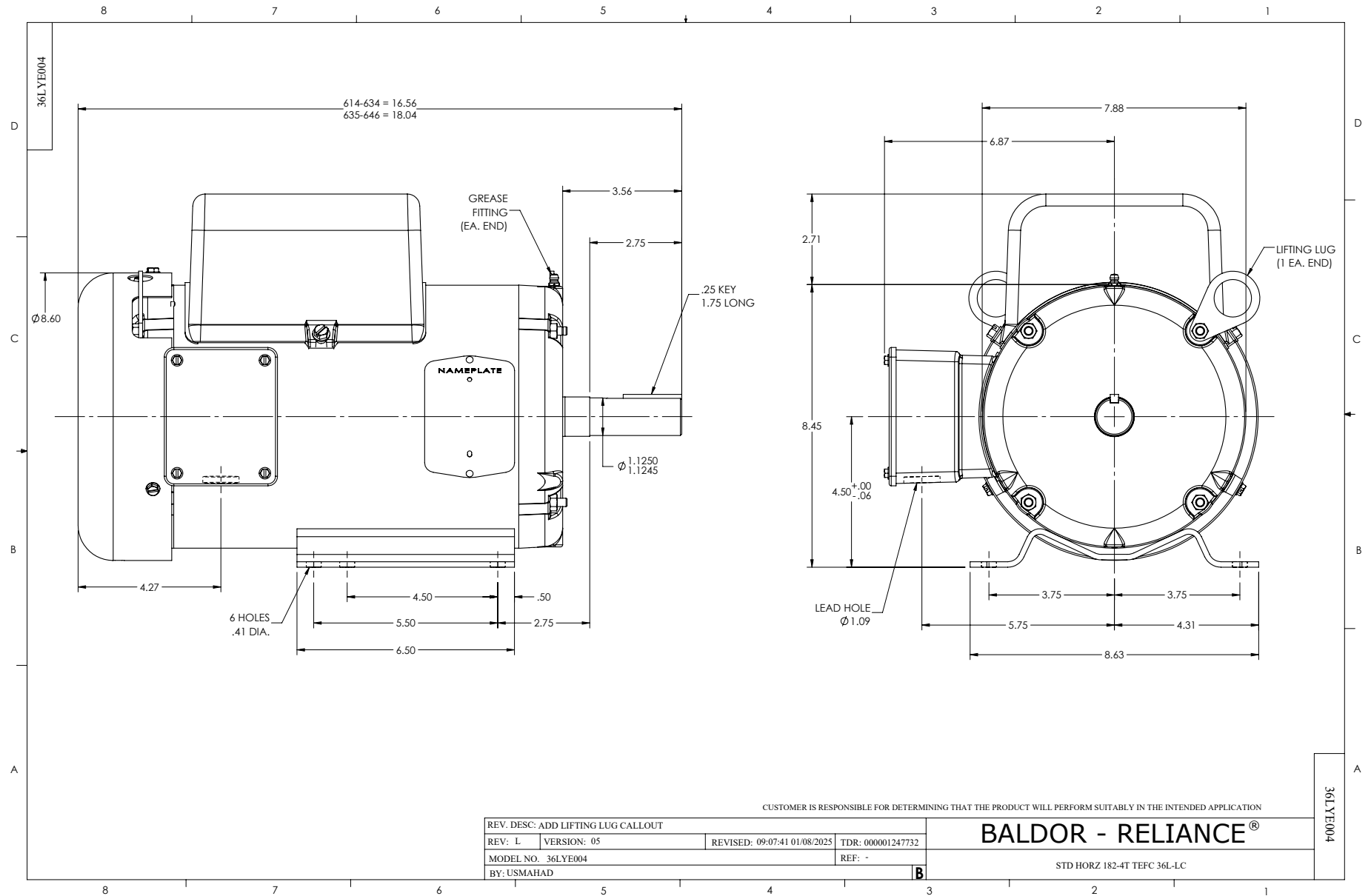
Typical performance - not guaranteed values.

3 HP 1 PH 60 HZ 1755 RPM 230 V 3640LC

TORQUES (LB-FT): PO=21 PU=18 LR=25 LRA=85

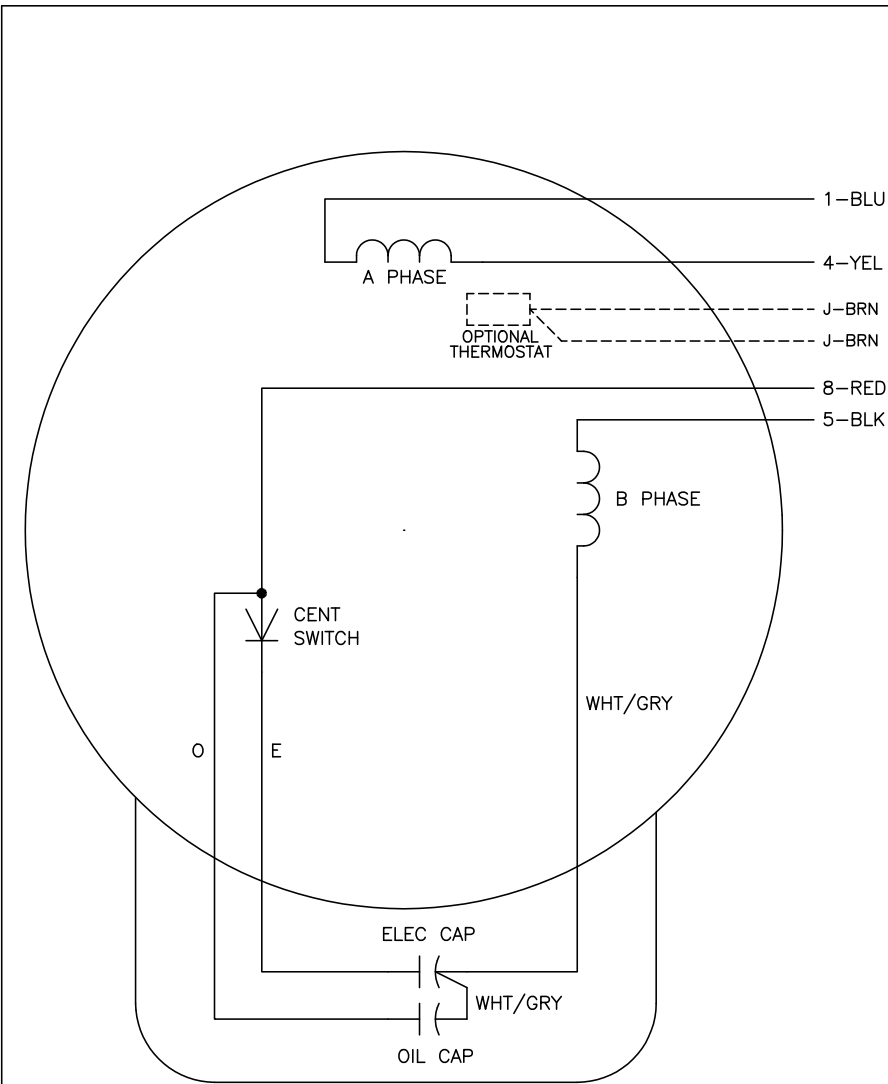


1/18/2025 ACPERF, record # 11392





CD0017A02



	LINE A	LINE B
STD	1,8	4,5
OPP	1,5	4,8

**NOTES:**

1. STANDARD ROTATION IS CCW FACING END OPPOSITE SHAFT EXTENSION.
2. OPTIONAL THERMOSTAT IS PROVIDED WHEN SPECIFIED.
3. MULTIPLE CAPACITORS ARE CONNECTED IN PARALLEL UNLESS OTHERWISE SPECIFIED.
4. LEAD COLORS ARE OPTIONAL. LEADS MUST ALWAYS BE NUMBERED AS SHOWN.

CD0017A02

REV. DESC: REVISE TO SHOW OPTIONAL COLORS			
REV. LTR: B	BY: JLP	REVISED: 04/09/99 11:30	TDR: 0178636
CD0017A02		FILE: AAA00007514	MDL: -
		MTL: -	

**BALDOR ELECTRIC Co.**

TYPE LC, SV, REV, 4 LEADS