



Customer information packet

EL3605T

2HP, 1740RPM, 1PH, 60HZ, 184T, 3623LC, TEFC, F1

Class - None

Division - Not Applicable

Specifications

Enclosure	TEFC
Frame	182T
Frame Material	Steel
Frequency	60.00 Hz
Haz Area Class and Group	None
Haz Area Division	Not Applicable
Motor Letter Type	Cap Start, Cap Run
Output @ Frequency	2.000 HP @ 60 HZ
Phase	1
Synchronous Speed @ Frequency	1800 RPM @ 60 HZ
Voltage @ Frequency	230.0 V @ 60 HZ 115.0 V @ 60 HZ
Agency Approvals	CSA CSA EEV NEMA_PREMIUM UR
Ambient Temperature	40 °C
Auxillary Box	No Auxillary Box
Auxillary Box Lead Termination	None
Base Indicator	Rigid
Bearing Grease Type	Polyrex EM (-20F +300F)
Blower	None
Current @ Voltage	17.600 A @ 115.0 V 8.800 A @ 230.0 V
Design Code	L
Drip Cover	No Drip Cover
Duty Rating	CONT
Efficiency @ 100% Load	82.5 %
Electrically Isolated Bearing	Not Electrically Isolated
Feedback Device	NO FEEDBACK
Front Face Code	Standard
Front Shaft Indicator	None

Part detail

Revision	AU
Type	AC
Mech. spec.	36E004
Base	
Status	PRD/A
Elec. spec.	36WGY546
Layout	36LYE004
Eff. date	05-01-2024
CD Diagram	CD0055
Poles	04
Leads	4#14 A PH,2#16 B PH
Proprietary	False
Created date	01-01-0001

Heater Indicator	No Heater
High Voltage Full Load Amps	8.8 a
Insulation Class	F
Inverter Code	Not Inverter
KVA Code	J
Lifting Lugs	No Lifting Lugs
Locked Bearing Indicator	No Locked Bearing
Motor Lead Exit	Ko Box
Motor Lead Quantity/Wire Size	4 @ 14 AWG, A PH
Motor Lead Termination	Flying Leads
Motor Standards	NEMA
Motor Type	3623LC
Mounting Arrangement	F1
Number of Poles	4
Overall Length	16.56 IN
Power Factor	90
Product Family	General Purpose
Pulley End Bearing Type	Ball
Pulley Face Code	Standard
Pulley Shaft Indicator	Standard
Rodent Screen	None
Service Factor	1.15
Shaft Diameter	1.125 IN
Shaft Extension Location	Pulley End
Shaft Ground Indicator	No Shaft Grounding
Shaft Rotation	Reversible
Shaft Slinger Indicator	No Slinger
Speed	1740 rpm
Speed Code	Single Speed
Starting Method	Direct on line
Thermal Device - Bearing	None
Thermal Device - Winding	None
Vibration Sensor Indicator	No Vibration Sensor
Winding Thermal 1	None

Winding Thermal 2

None

Nameplate

NP2116L									
CAT.NO.	EL3605T								
SPEC.	36E004Y546G1								
HP	2								
VOLTS	115/230								
AMP	17.6/8.8								
RPM	1740								
FRAME	182T			HZ	60		PH	1	
SER.F.	1.15	CODE	J	DES	L	CL	F		
NEMA-NOM-EFF	82.5	PF	90						
RATING	40C AMB-CONT								
CC									
DE	6206	ODE	6205						
ENCL	TEFC	SN							
	SFA 20.4/10.2								

Accessories

Part number	Description	Multiplier
36-3301	C FACE KIT	A8
36EP1304A62SP	FLANGE MTD ENDPLATE 182-4TD -ENCL (LESS	A8

AC Induction Motor Performance Data

Record # 11408

Typical performance - not guaranteed values

Winding: 36WGY546-R001		Type: 3623LC		Enclosure: TEFC	
Nameplate Data			230 V, 60 Hz: High Voltage Connection		
Rated Output (HP)	2	Full Load Torque	6.1 LB-FT		
Volts	115/230	Start Configuration	direct on line		
Full Load Amps	17.6/8.8	Breakdown Torque	13.2 LB-FT		
R.P.M.	1740	Pull-up Torque	9.2 LB-FT		
Hz	60 Phase	1	Locked-rotor Torque	14.7 LB-FT	
NEMA Design Code	L KVA Code	J	Starting Current	62.4 A	
Service Factor (S.F.)	1.15	No-load Current	2.72 A		
NEMA Nom. Eff.	82.5 Power Factor	90	Line-line Res. @ 25°C	1.22 Ω A Ph 0.64 Ω B Ph	
Rating - Duty	40C AMB-CONT	Temp. Rise @ Rated Load	55°C		
S.F. Amps	20.4/10.2	Temp. Rise @ S.F. Load	71°C		

Load Characteristics 230 V, 60 Hz, 2 HP

% of Rated Load	25	50	75	100	125	150	S.F.
Power Factor	67	82	87	90	91	90	0
Efficiency	72.4	82.1	84	83	80.1	75.4	0
Speed	1784	1771	1755	1739	1716	1685	0
Line amperes	3.48	4.9	6.68	8.78	11.28	14.36	10.2

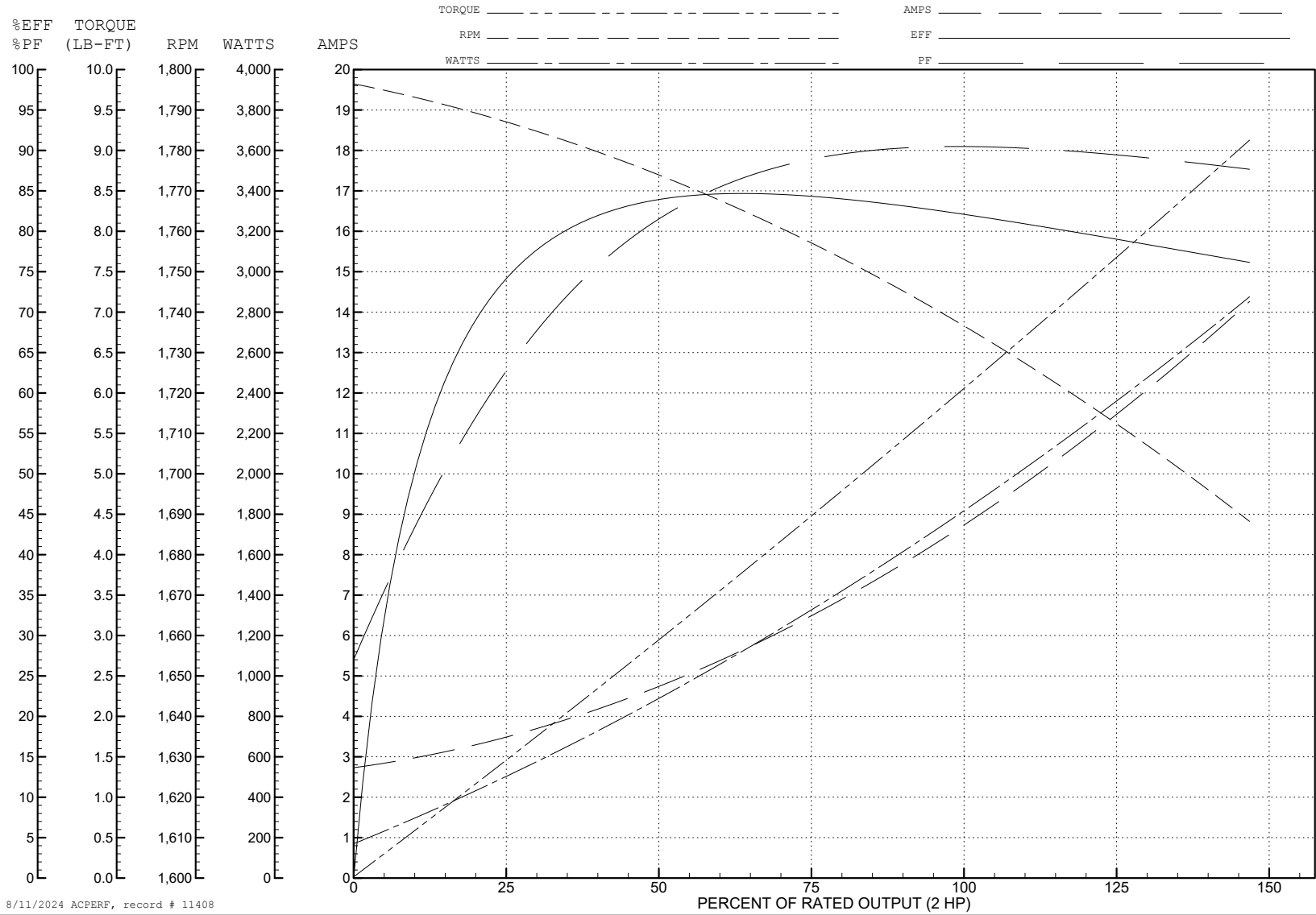
ABB Motors and Mechanical Inc.

WINDING # 36WGY546

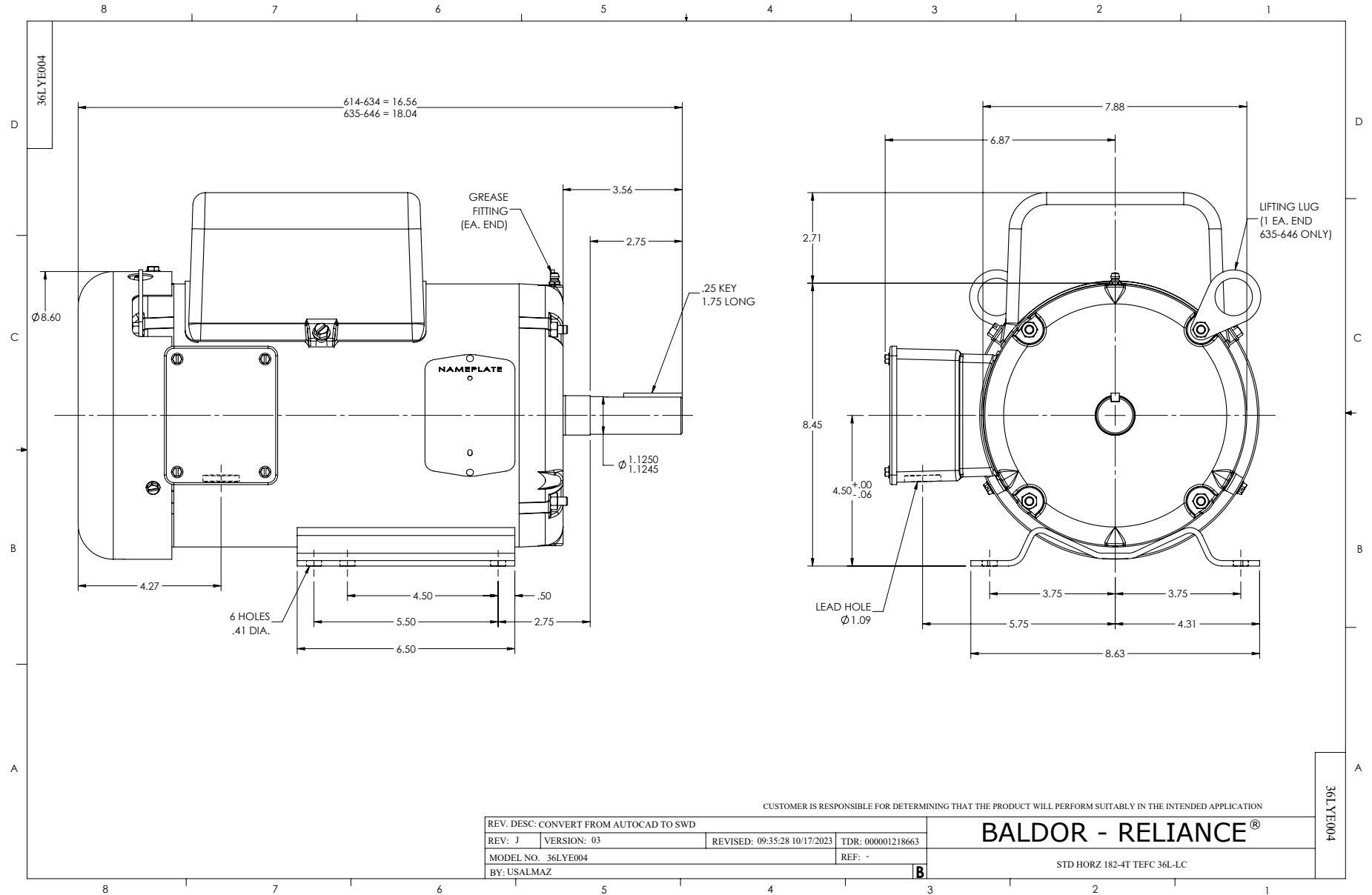
Typical performance - not guaranteed values.

2 HP 1 PH 60 HZ 1740 RPM 230 V 3623LC

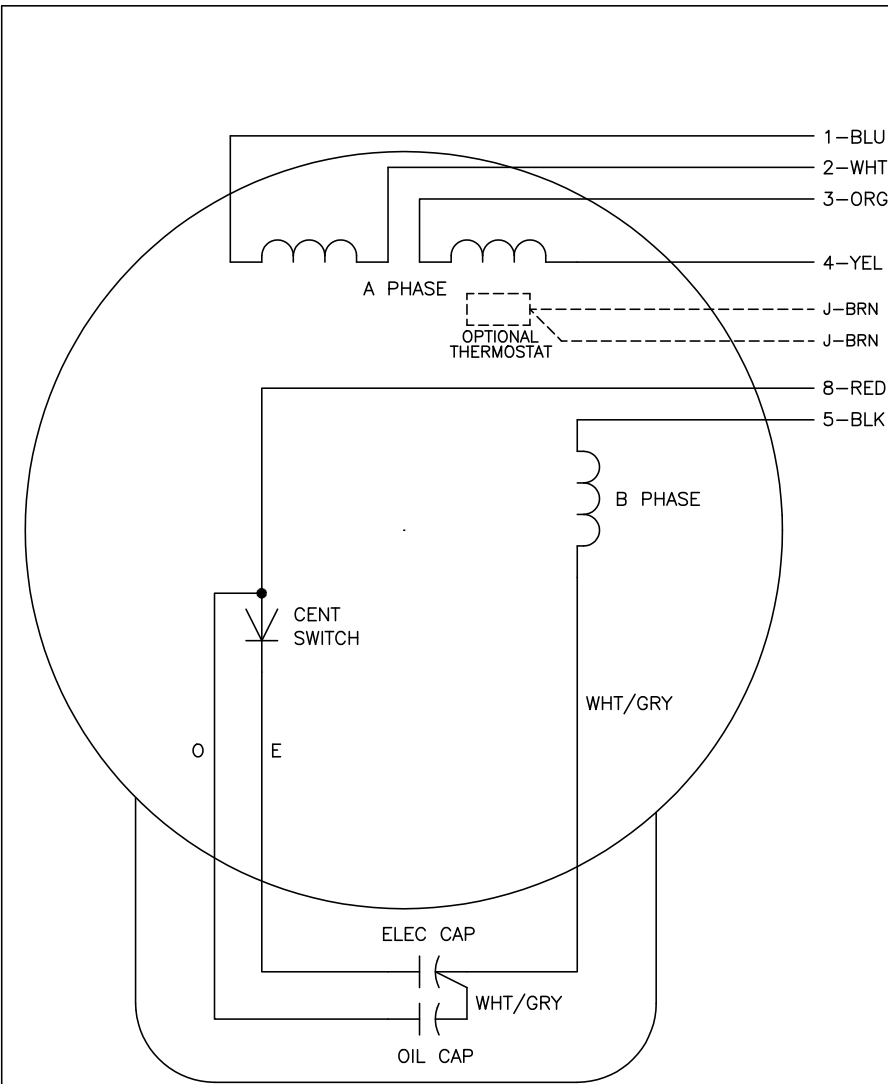
TORQUES (LB-FT): PO=13.2 PU=9.2 LR=14.7 LRA=62.4



8/11/2024 ACPERF, record # 11408



CD0055



	LINE A	LINE B	JOIN
HIGH STD	1	4,5	2,3,8
HIGH OPP	1	4,8	2,3,5
LOW STD	1,3,8	2,4,5	-
LOW OPP	1,3,5	2,4,8	-

NOTES:

1. STANDARD ROTATION IS CCW FACING END OPPOSITE SHAFT EXTENSION.
2. OPTIONAL THERMOSTAT IS PROVIDED WHEN SPECIFIED.
3. MULTIPLE CAPACITORS ARE CONNECTED IN PARALLEL UNLESS OTHERWISE SPECIFIED.
4. LEAD COLORS ARE OPTIONAL. LEADS MUST ALWAYS BE NUMBERED AS SHOWN.

REV. DESC: REVISE TO SHOW OPTIONAL COLORS			
REV. LTR: D	BY: JLP	REVISED: 04/08/99 1:17	TDR: 0178636
C00000		FILE: AAA00007414	MDL: -
		MTL: -	

BALDOR ELECTRIC Co.

TYPE LC, DV, REV, 6 LEADS

CD0055