

ABB BALDOR RELIANCE III

Customer information packet

EL1410T

5HP, 1735RPM, 1PH, 60HZ, 184T, 3646LC, OPSB, F1

Class - None

Division - Not Applicable

Specifications

| | |
|---------------------------------------|--|
| Enclosure | OPSB |
| Frame | 184T |
| Frame Material | Steel |
| Frequency | 60.00 Hz |
| Haz Area Class and Group | None |
| Haz Area Division | Not Applicable |
| Motor Letter Type | Cap Start, Cap Run |
| Output @ Frequency | 5.000 HP @ 60 HZ |
| Phase | 1 |
| Synchronous Speed @ Frequency | 1800 RPM @ 60 HZ |
| Voltage @ Frequency | 230.0 V @ 60 HZ |
| Agency Approvals | CSA EEV CURUS CURUSEEV NEMA PREMIUM (OLD LOGO) C UR US |
| Ambient Temperature | 40 °C |
| Auxiliary Box | NO AUXILLARY BOX |
| Auxiliary Box Lead Termination | None |
| Base Indicator | Rigid |
| Bearing Grease Type | Polyrex EM (-20F +300F) |
| Blower | None |
| Current @ Voltage | 19.100 A @ 230.0 V |
| Design Code | L |
| Drip Cover | No Drip Cover |
| Duty Rating | CONT |
| Efficiency @ 100% Load | 86.5 % |
| Electrically Isolated Bearing | Not Electrically Isolated |
| Feedback Device | NO FEEDBACK |
| Front Face Code | Standard |
| Front Shaft Indicator | None |
| Heater Indicator | No Heater |

Part Detail

| | |
|---------------------|---------------------|
| Revision | AS |
| Type | AC |
| Mech. spec. | 36H982 |
| Base | |
| Status | PRD/A |
| Elec. spec. | 36WGY585 |
| Layout | 36LYH982 |
| Eff. date | 07-21-2025 |
| CD Diagram | CD0017A02 |
| Poles | 04 |
| Leads | 2#10 A PH,2#16 B PH |
| Proprietary | False |
| Created date | 01-01-0001 |

| | |
|-------------------------------|---------------------|
| High Voltage Full Load Amps | 19.1 a |
| Insulation Class | F |
| Inverter Code | Not Inverter |
| KVA Code | G |
| Lifting Lugs | No Lifting Lugs |
| Locked Bearing Indicator | No Locked Bearing |
| Motor Lead Exit | Ko Box |
| Motor Lead Quantity/Wire Size | 2 @ 10 AWG, A PH |
| Motor Lead Termination | Flying Leads |
| Motor Standards | NEMA |
| Motor Type | 3646LC |
| Mounting Arrangement | F1 |
| Number of Poles | 4 |
| Overall Length | 18.00 IN |
| Power Factor | 97 |
| Product Family | General Purpose |
| Pulley End Bearing Type | Ball |
| Pulley Face Code | Standard |
| Pulley Shaft Indicator | Standard |
| Rodent Screen | None |
| Service Factor | 1.15 |
| Shaft Diameter | 1.125 IN |
| Shaft Extension Location | Pulley End |
| Shaft Ground Indicator | No Shaft Grounding |
| Shaft Rotation | Reversible |
| Shaft Slinger Indicator | No Slinger |
| Speed | 1735 rpm |
| Speed Code | Single Speed |
| Starting Method | Direct on line |
| Thermal Device - Bearing | None |
| Thermal Device - Winding | None |
| Vibration Sensor Indicator | No Vibration Sensor |
| Winding Thermal 1 | None |
| Winding Thermal 2 | None |

Nameplate

| NP2116L | | | | | | | | | |
|---------------------|--------------|-------------|-----------|------------|---|-----------|---|--|--|
| CAT.NO. | EL1410T | | | | | | | | |
| SPEC. | 36H982Y585G1 | | | | | | | | |
| HP | 5 | | | | | | | | |
| VOLTS | 230 | | | | | | | | |
| AMP | 19.1 | | | | | | | | |
| RPM | 1735 | | | | | | | | |
| FRAME | 184T | | HZ | 60 | | PH | 1 | | |
| SER.F. | 1.15 | CODE | G | DES | L | CL | F | | |
| NEMA-NOM-EFF | 86.5 | PF | 97 | | | | | | |
| RATING | 40C AMB-CONT | | | | | | | | |
| CC | | | | | | | | | |
| DE | 6206 | ODE | 6205 | | | | | | |
| ENCL | OPSB | SN | | | | | | | |

Accessories

| Part number | Description | Multiplier |
|--------------------|--------------------|-------------------|
| 36-3403 | C FACE KIT | A8 |
| 36EP1405A09SP | D-FLANGE KIT | A8 |

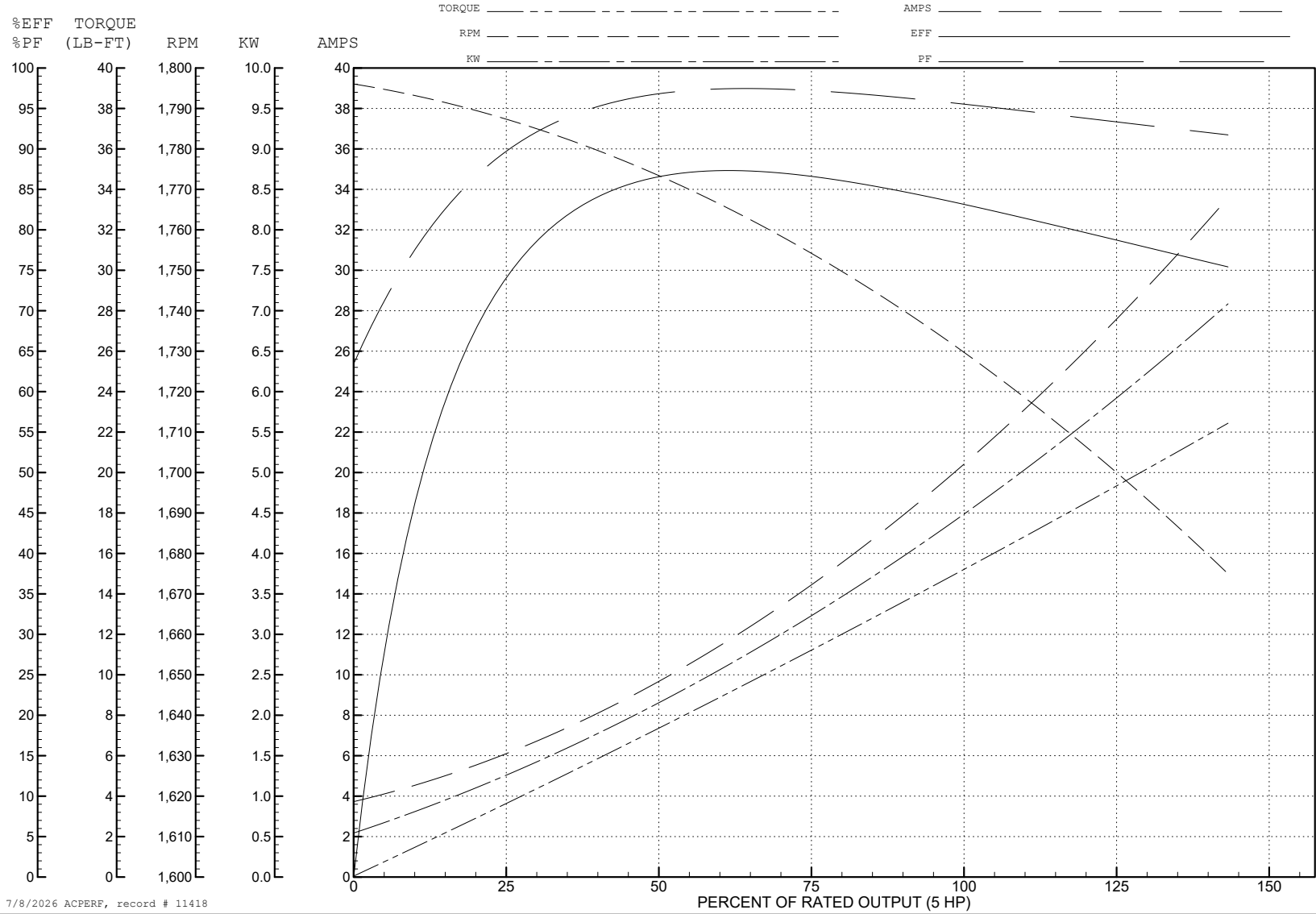
ABB Motors and Mechanical Inc.

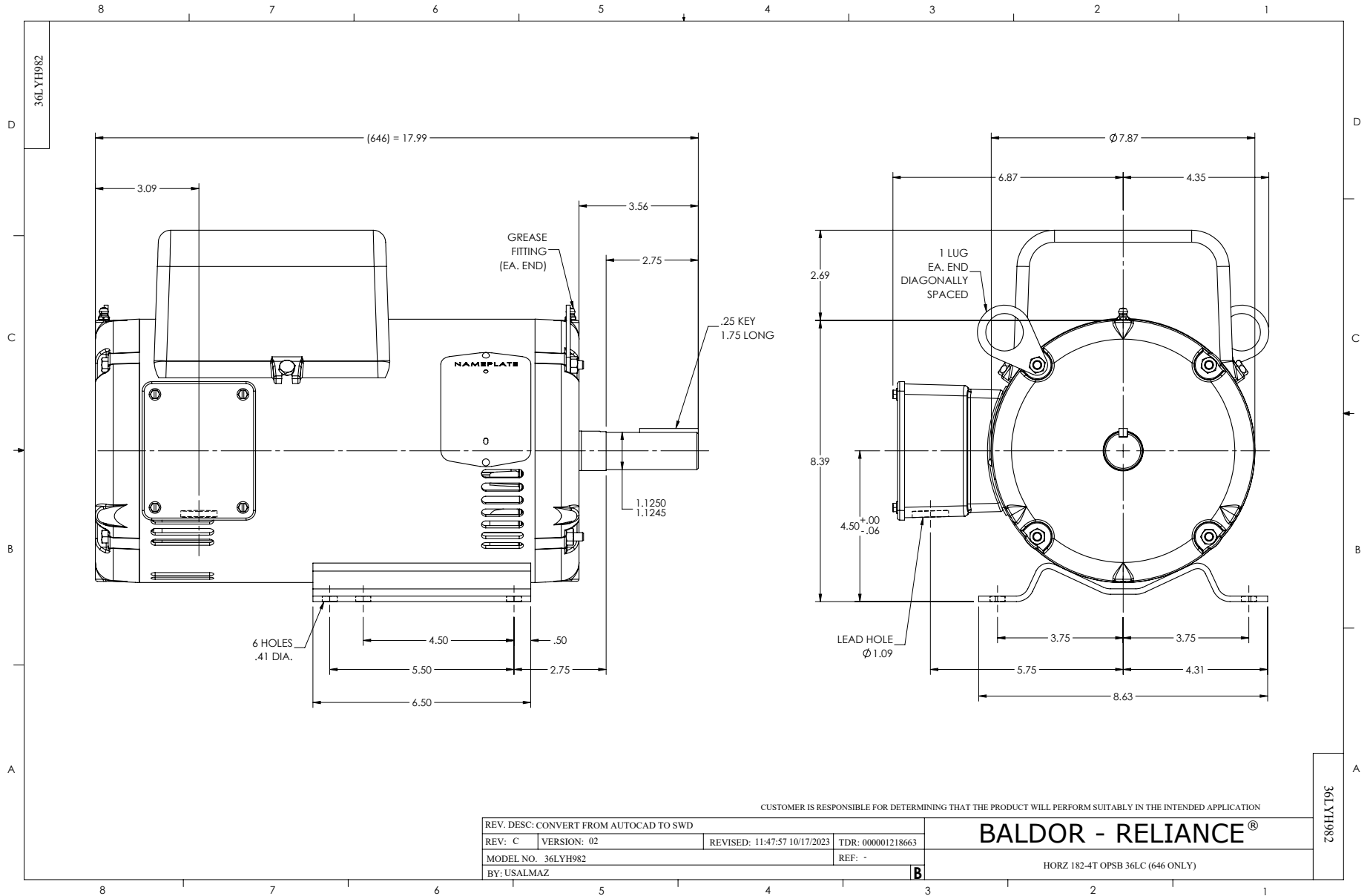
WINDING # 36WGY585

Typical performance - not guaranteed values.

5 HP 1 PH 60 HZ 1735 RPM 230 V 3646LC

TORQUES (LB-FT): PO=37 PU=27 LR=42 LRA=129





CD0017A02

