



Customer information packet

EL1408T

3HP, 1755RPM, 1PH, 60HZ, 184T, 3634LC, OPSB, F1

Class - None

Division - Not Applicable

Specifications

Enclosure	OPSB
Frame	184T
Frame Material	Steel
Frequency	60.00 Hz
Haz Area Class and Group	None
Haz Area Division	Not Applicable
Motor Letter Type	Cap Start, Cap Run
Output @ Frequency	3.000 HP @ 60 HZ
Phase	1
Synchronous Speed @ Frequency	1800 RPM @ 60 HZ
Voltage @ Frequency	230.0 V @ 60 HZ 208.0 V @ 60 HZ
Agency Approvals	CSA CSA EEV NEMA_PREMIUM UR
Ambient Temperature	40 °C
Auxillary Box	No Auxillary Box
Auxillary Box Lead Termination	None
Base Indicator	Rigid
Bearing Grease Type	Polyrex EM (-20F +300F)
Blower	None
Current @ Voltage	11.200 A @ 230.0 V 12.500 A @ 208.0 V
Design Code	L
Drip Cover	No Drip Cover
Duty Rating	CONT
Efficiency @ 100% Load	85.5 %
Electrically Isolated Bearing	Not Electrically Isolated
Feedback Device	NO FEEDBACK
Front Face Code	Standard
Front Shaft Indicator	None

Part detail

Revision	AB
Type	AC
Mech. spec.	36K265
Base	
Status	PRD/A
Elec. spec.	36WGT269
Layout	36LYK265
Eff. date	06-27-2024
CD Diagram	CD0017A02
Poles	04
Leads	2#14 A PH,2#16 B PH
Proprietary	False
Created date	01-01-0001

Heater Indicator	No Heater
High Voltage Full Load Amps	11.2 a
Insulation Class	F
Inverter Code	Not Inverter
KVA Code	F
Lifting Lugs	No Lifting Lugs
Locked Bearing Indicator	No Locked Bearing
Motor Lead Exit	Ko Box
Motor Lead Quantity/Wire Size	2 @ 14 AWG, A PH
Motor Lead Termination	Flying Leads
Motor Standards	NEMA
Motor Type	3634LC
Mounting Arrangement	F1
Number of Poles	4
Overall Length	16.50 IN
Power Factor	98
Product Family	General Purpose
Pulley End Bearing Type	Ball
Pulley Face Code	Standard
Pulley Shaft Indicator	Standard
Rodent Screen	None
Service Factor	1.15
Shaft Diameter	1.125 IN
Shaft Extension Location	Pulley End
Shaft Ground Indicator	No Shaft Grounding
Shaft Rotation	Reversible
Shaft Slinger Indicator	No Slinger
Speed	1750 rpm
Speed Code	Single Speed
Starting Method	Direct on line
Thermal Device - Bearing	None
Thermal Device - Winding	None
Vibration Sensor Indicator	No Vibration Sensor
Winding Thermal 1	None

Winding Thermal 2

None

Nameplate

NP2117L							
CAT.NO.	EL1408T						
SPEC.	36K265T269E7						
HP	3						
VOLTS	208-230						
AMP	12.5-11.2						
RPM	1750						
FRAME	184T	HZ	60	PH	1		
SER.F.	1.15	CODE	F	DES	L	CL	F
NEMA-NOM-EFF	85.5	PF	98				
RATING	40C AMB-CONT						
CC							
DE	6206	ODE	6205				
ENCL	OPSB	SN					

Accessories

Part number	Description	Multiplier
36-3403	C FACE KIT	A8
36EP1405A09SP	D-FLANGE KIT	

AC Induction Motor Performance Data

Record # 35745

Typical performance - not guaranteed values

Winding: 36WGT269-R004		Type: 3634LC		Enclosure: OPSB	
Nameplate Data			230 V, 60 Hz: Single Voltage Motor		
Rated Output (HP)	3	Full Load Torque	9 LB-FT		
Volts	208-230	Start Configuration	direct on line		
Full Load Amps	12.5-11.2	Breakdown Torque	20.4 LB-FT		
R.P.M.	1750	Pull-up Torque	16.7 LB-FT		
Hz	60 Phase	1	Locked-rotor Torque	19.8 LB-FT	
NEMA Design Code	L KVA Code	F	Starting Current	70.2 A	
Service Factor (S.F.)	1.15	No-load Current	1.4 A		
NEMA Nom. Eff.	85.5 Power Factor	98	Line-line Res. @ 25°C	0.9 Ω A Ph 2.15 Ω B Ph	
Rating - Duty	40C AMB-CONT	Temp. Rise @ Rated Load	45°C		
S.F. Amps		Temp. Rise @ S.F. Load	56°C		

Load Characteristics 230 V, 60 Hz, 3 HP

% of Rated Load	25	50	75	100	125	150	S.F.
Power Factor	95	98	99	99	96	95	97
Efficiency	72.9	85	88	88.1	86.7	82.8	87.3
Speed	1785	1775	1764	1750	1733	1713	1740
Line amperes	3.6	5.9	8.4	11.2	14.5	18.2	13.2

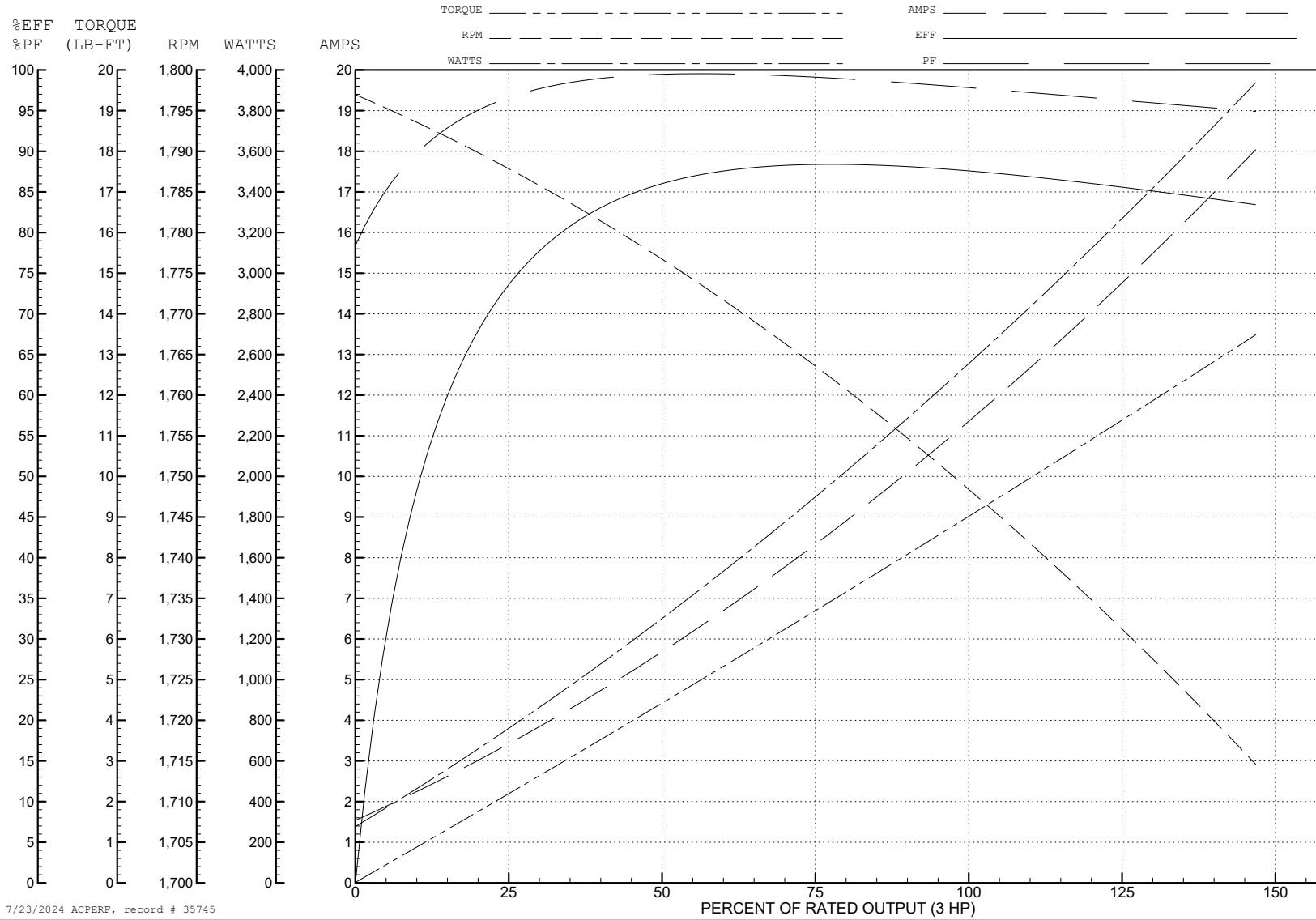
ABB Motors and Mechanical Inc.

WINDING # 36WGT269

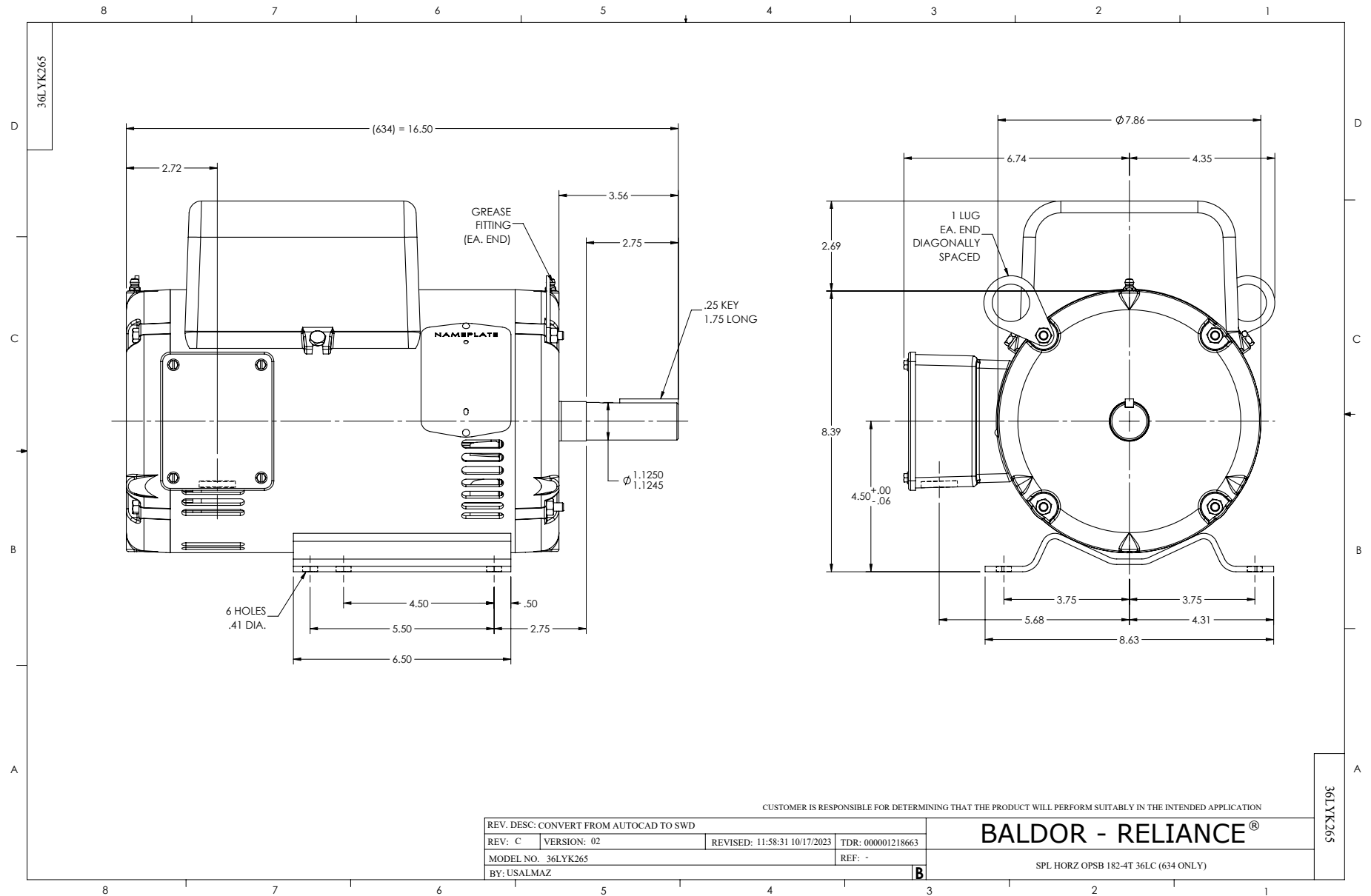
Typical performance - not guaranteed values.

3 HP 1 PH 60 HZ 1750 RPM 230 V 3634LC

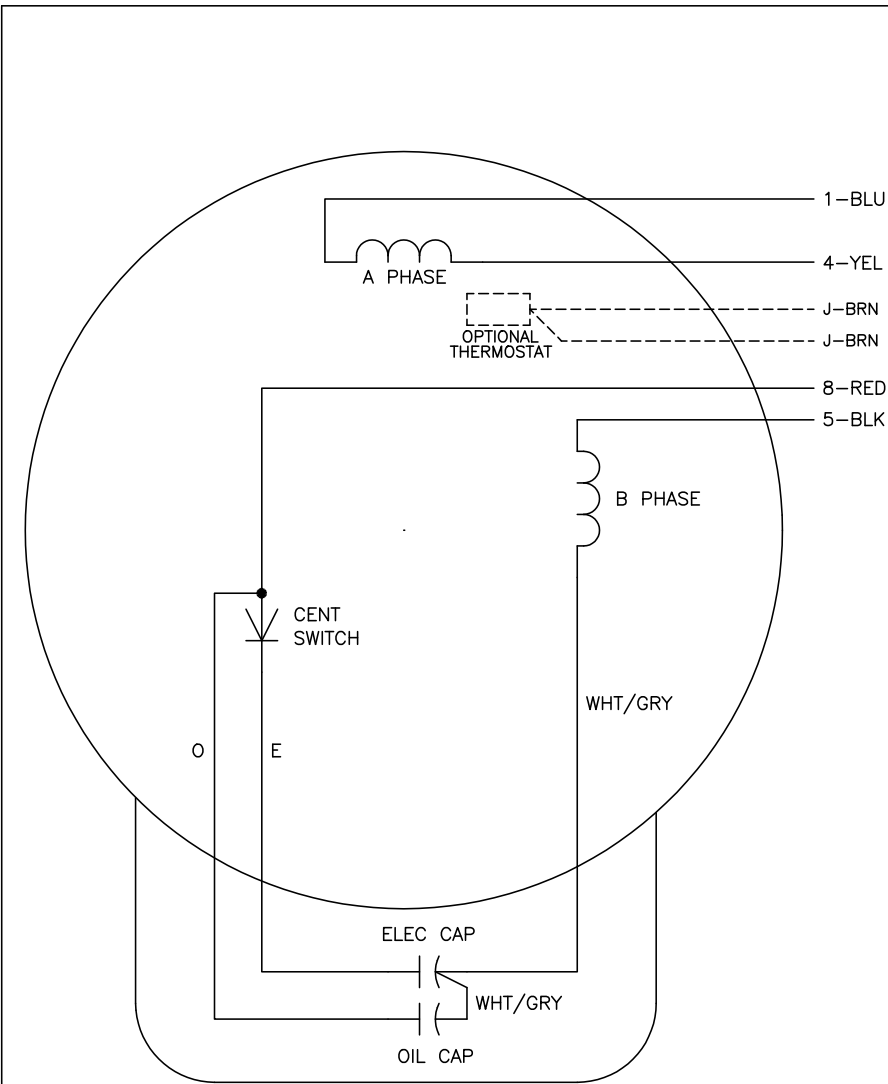
TORQUES (LB-FT): PO=20.4 PU=16.7 LR=19.8 LRA=70.2



7/23/2024 ACPERF, record # 35745



CD0017A02



	LINE A	LINE B
STD	1,8	4,5
OPP	1,5	4,8

NOTES:

1. STANDARD ROTATION IS CCW FACING END OPPOSITE SHAFT EXTENSION.
2. OPTIONAL THERMOSTAT IS PROVIDED WHEN SPECIFIED.
3. MULTIPLE CAPACITORS ARE CONNECTED IN PARALLEL UNLESS OTHERWISE SPECIFIED.
4. LEAD COLORS ARE OPTIONAL. LEADS MUST ALWAYS BE NUMBERED AS SHOWN.

CD0017A02

REV. DESC: REVISE TO SHOW OPTIONAL COLORS			
REV. LTR: B	BY: JLP	REVISED: 04/09/99 11:30	TDR: 0178636
CD0017A02		FILE: AAA00007514	MDL: -
		MTL: -	

BALDOR ELECTRIC Co.

TYPE LC, SV, REV, 4 LEADS