

BALDOR® • RELIANCE™

Customer information packet

EL11319M

1.5HP, 1725RPM, 1PH, 60HZ, 56H, 3540LC, OPEN, F

Class - None

Division - Not Applicable

Copyright © All product information within this document is subject to ABB Motors and Mechanical Inc. copyright © protection, unless otherwise noted.

12/2/2024 8:03:23 PM

Specifications

Enclosure	OPEN
Frame	56H
Frame Material	Steel
Frequency	60.00 Hz
Haz Area Class and Group	None
Haz Area Division	Not Applicable
Motor Letter Type	Cap Start, Cap Run
Output @ Frequency	1.500 HP @ 60 HZ
Phase	1
Synchronous Speed @ Frequency	1800 RPM @ 60 HZ
Voltage @ Frequency	230.0 V @ 60 HZ 115.0 V @ 60 HZ
Agency Approvals	CSA UR
Ambient Temperature	40 °C
Auxillary Box	No Auxillary Box
Auxillary Box Lead Termination	None
Base Indicator	Rigid
Bearing Grease Type	Polyrex EM (-20F +300F)
Blower	None
Current @ Voltage	6.200 A @ 230.0 V 12.400 A @ 115.0 V
Design Code	L
Drip Cover	No Drip Cover
Duty Rating	CONT
Efficiency @ 100% Load	83.8 %
Electrically Isolated Bearing	Not Electrically Isolated
Feedback Device	NO FEEDBACK
Front Face Code	Standard
Front Shaft Indicator	None
Heater Indicator	No Heater
High Voltage Full Load Amps	6.2 a

Part detail

Revision	G
Type	AC
Mech. spec.	35E007
Base	
Status	PRD/A
Elec. spec.	35WGL504
Layout	35LYE007
Eff. date	04-29-2024
CD Diagram	CD0320
Poles	04
Leads	4#16 A&J,2#18 B PH,1#14 #4TH
Proprietary	False
Created date	02-24-2016

Insulation Class	F
Inverter Code	Not Inverter
KVA Code	J
Lifting Lugs	No Lifting Lugs
Locked Bearing Indicator	No Locked Bearing
Motor Lead Exit	Ko Box
Motor Lead Quantity/Wire Size	4 @ 16 AWG, A&J
Motor Lead Termination	Flying Leads
Motor Standards	NEMA
Motor Type	3540LC
Mounting Arrangement	F1
Number of Poles	4
Overall Length	14.00 IN
Power Factor	93
Product Family	General Purpose
Pulley End Bearing Type	Ball
Pulley Face Code	Standard
Pulley Shaft Indicator	Standard
Rodent Screen	None
RoHS Status	ROHS COMPLIANT
Service Factor	1.15
Shaft Diameter	0.625 IN
Shaft Extension Location	Pulley End
Shaft Ground Indicator	No Shaft Grounding
Shaft Rotation	Reversible
Shaft Slinger Indicator	No Slinger
Speed	1725 rpm
Speed Code	Single Speed
Starting Method	Direct on line
Thermal Device - Bearing	None
Thermal Device - Winding	None
Vibration Sensor Indicator	No Vibration Sensor
Winding Thermal 1	Manual Thermal Overload
Winding Thermal 1 Location	SB

Winding Thermal 2

None

Nameplate

NP1257L									
CAT.NO.	EL11319M								
SPEC.	35E007L504G1								
HP	1.5								
VOLTS	115/230								
AMP	12.4/6.2								
RPM	1725								
FRAME	56H			HZ	60		PH	1	
SER.F.	1.15	CODE	J	DES	L	CL	F		
NEMA-NOM-EFF	83.8	PF	93						
RATING	40C AMB-CONT								
CC									
DE	6205	ODE	6203						
ENCL	OPEN	SN							

AC Induction Motor Performance Data

Record # 62123

Typical performance - not guaranteed values

Winding: 35WGL504-R001		Type: 3540LC	Enclosure: OPEN		
Nameplate Data			115 V, 60 Hz: Low Voltage Connection		
Rated Output (HP)	1.5	Full Load Torque	4.48 LB-FT		
Volts	115/230	Start Configuration	direct on line		
Full Load Amps	12.4/6.2	Breakdown Torque	12 LB-FT		
R.P.M.	1725	Pull-up Torque	10.49 LB-FT		
Hz	60 Phase	1	Locked-rotor Torque	13.91 LB-FT	
NEMA Design Code	L	KVA Code	J	Starting Current	101 A
Service Factor (S.F.)	1.15	No-load Current	3.43 A		
NEMA Nom. Eff.	83.8	Power Factor	93	Line-line Res. @ 25°C	0.3859 Ω A Ph 1.2945 Ω B Ph
Rating - Duty	40C	AMB-CONT	Temp. Rise @ Rated Load	48°C	
S.F. Amps			Temp. Rise @ S.F. Load	59°C	

Load Characteristics 115 V, 60 Hz, 1.5 HP

% of Rated Load	25	50	75	100	125	150	S.F.
Power Factor	75	86	91	93	94	94	94
Efficiency	70.4	81.2	84.2	84.7	83.2	80.6	83.8
Speed	1789.9	1780.1	1769.5	1758.1	1742.1	1723.8	1748
Line amperes	4.66	6.92	9.48	12.3	15.6	19.3	14.3

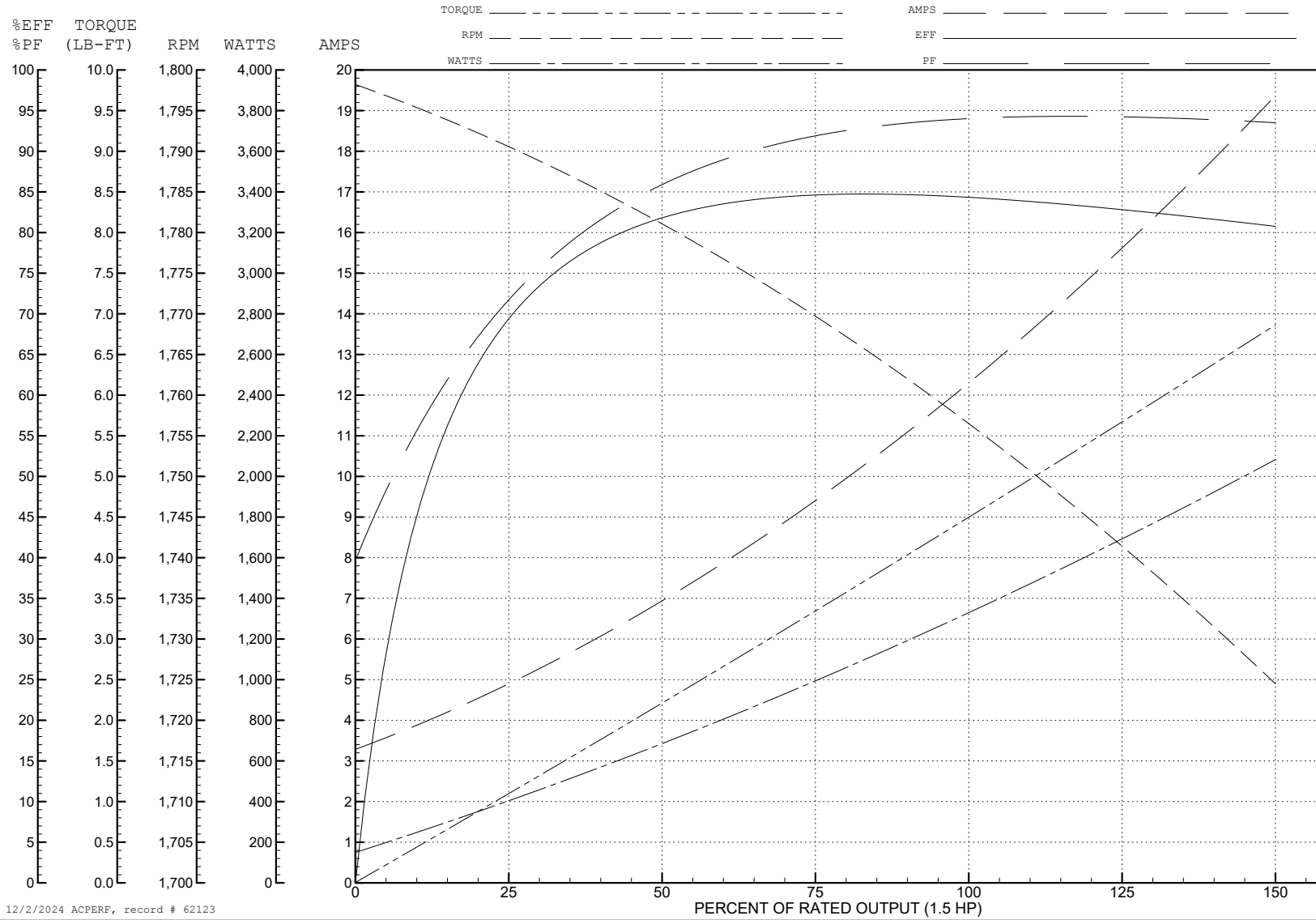
ABB Motors and Mechanical Inc.

WINDING # 35WGL504

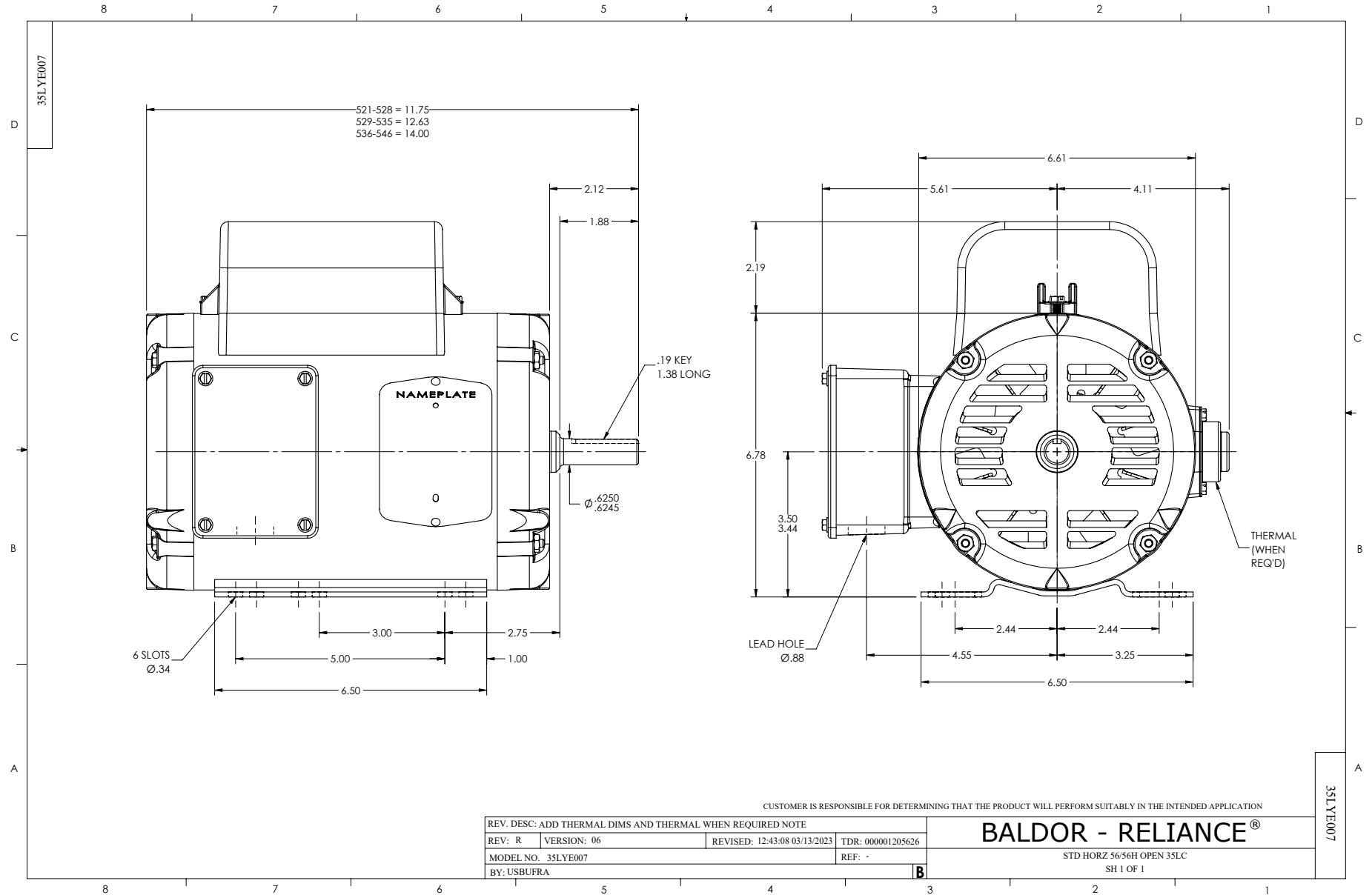
Typical performance - not guaranteed values.

1.5 HP 1 PH 60 HZ 1725 RPM 115 V 3540LC

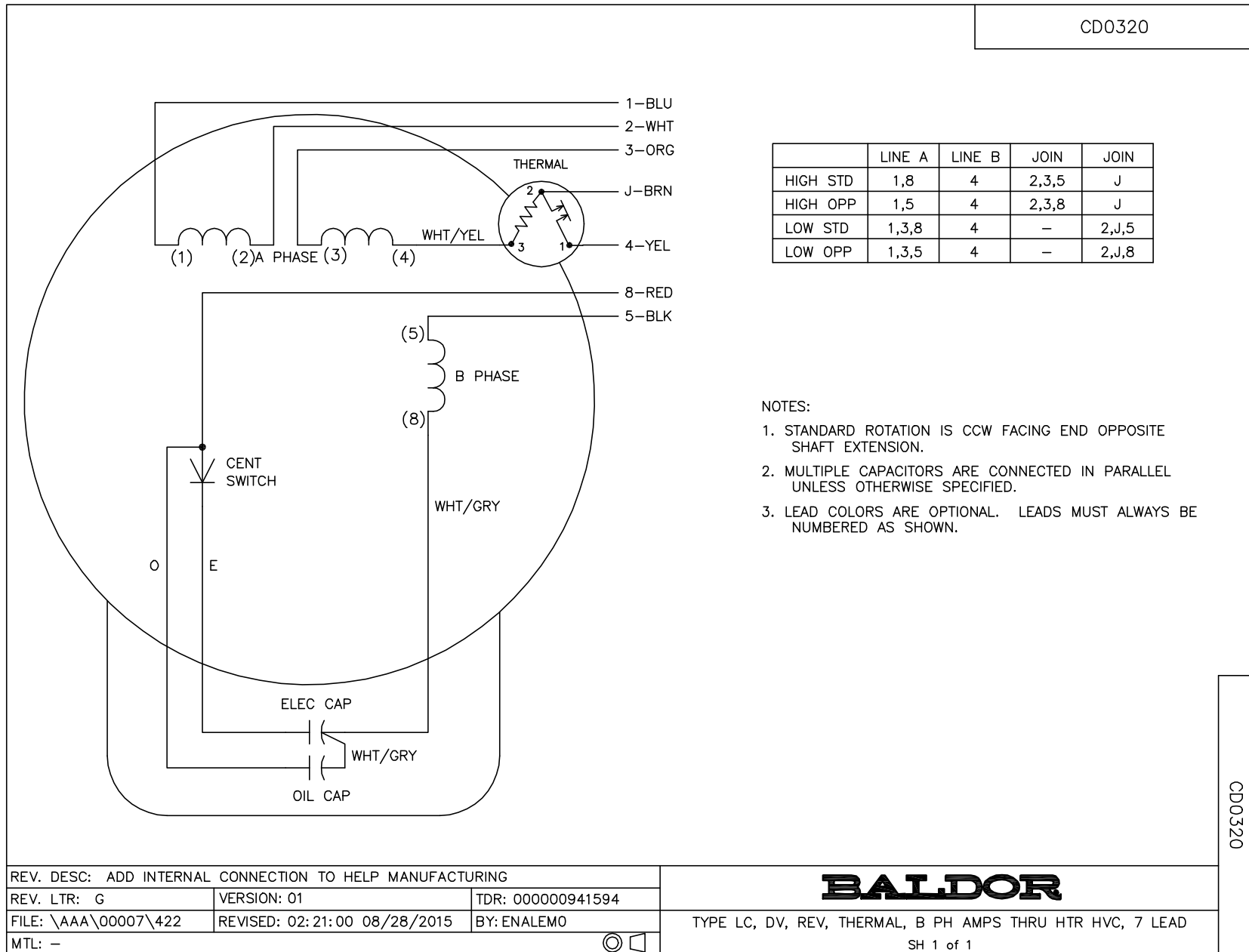
TORQUES (LB-FT): PO=12 PU=10.49 LR=13.91 LRA=101



12/2/2024 ACPERF, record # 62123



CD0320



	LINE A	LINE B	JOIN	JOIN
HIGH STD	1,8	4	2,3,5	J
HIGH OPP	1,5	4	2,3,8	J
LOW STD	1,3,8	4	-	2,J,5
LOW OPP	1,3,5	4	-	2,J,8

NOTES:

1. STANDARD ROTATION IS CCW FACING END OPPOSITE SHAFT EXTENSION.
2. MULTIPLE CAPACITORS ARE CONNECTED IN PARALLEL UNLESS OTHERWISE SPECIFIED.
3. LEAD COLORS ARE OPTIONAL. LEADS MUST ALWAYS BE NUMBERED AS SHOWN.

CD0320

REV. DESC: ADD INTERNAL CONNECTION TO HELP MANUFACTURING		
REV. LTR: G	VERSION: 01	TDR: 00000941594
FILE: \AAA\00007\422	REVISED: 02:21:00 08/28/2015	BY: ENALEMO
MTL: -		

BALDOR

TYPE LC, DV, REV, THERMAL, B PH AMPS THRU HTR HVC, 7 LEAD
SH 1 of 1