

BALDOR • RELIANCE

Customer information packet

EL11319

1.5HP, 1725RPM, 1PH, 60HZ, 56H, 3536LC, ODP, F1

Class - None

Division - Not Applicable

Copyright © All product information within this document is subject to ABB Motors and Mechanical Inc. copyright © protection, unless otherwise noted.

3/28/2023 8:03:17 AM

Specifications

Enclosure	ODP
Frame	56H
Frame Material	Steel
Frequency	60.00 Hz
Motor Letter Type	Cap Start, Cap Run
Output @ Frequency	1.500 HP @ 60 HZ
Phase	1
Synchronous Speed @ Frequency	1800 RPM @ 60 HZ
Voltage @ Frequency	115.0 V @ 60 HZ 230.0 V @ 60 HZ
XP Class and Group	None
XP Division	Not Applicable
Agency Approvals	CURUSEEV
Ambient Temperature	40 °C
Auxillary Box	No Auxillary Box
Auxillary Box Lead Termination	None
Base Indicator	Rigid
Bearing Grease Type	Polyrex EM (-20F +300F)
Blower	None
Current @ Voltage	11.900 A @ 115.0 V 6.400 A @ 230.0 V
Design Code	L
Drip Cover	No Drip Cover
Duty Rating	CONT
Efficiency @ 100% Load	83.8 %
Electrically Isolated Bearing	Not Electrically Isolated
Feedback Device	NO FEEDBACK
Front Shaft Indicator	None
Heater Indicator	No Heater
High Voltage Full Load Amps	6.4 a
Insulation Class	F
Inverter Code	Not Inverter

Part detail

Revision	B
Type	AC
Mech. spec.	35E007
Base	
Status	PRD/A
Elec. spec.	35WGG129
Layout	35LYE007
Eff. date	01-06-2023
CD Diagram	CD0016A01
Poles	04
Leads	7#18
Proprietary	False
Created date	08-01-2022

KVA Code	J
Lifting Lugs	No Lifting Lugs
Locked Bearing Indicator	No Locked Bearing
Motor Lead Quantity/Wire Size	7 @ 18 AWG
Motor Lead Termination	Flying Leads
Motor Standards	NEMA
Motor Type	3536LC
Mounting Arrangement	F1
Number of Poles	4
Overall Length	14.00 IN
Power Factor	97
Product Family	General Purpose
Pulley End Bearing Type	Ball
Pulley Face Code	Standard
Pulley Shaft Indicator	Standard
Rodent Screen	None
Service Factor	1.15
Shaft Diameter	0.625 IN
Shaft Ground Indicator	No Shaft Grounding
Shaft Rotation	Reversible
Shaft Slinger Indicator	No Slinger
Speed	1725 rpm
Speed Code	Single Speed
Starting Method	Direct on line
Thermal Device - Bearing	None
Thermal Device - Winding	None
Vibration Sensor Indicator	No Vibration Sensor
Winding Thermal 1	None
Winding Thermal 2	None

Nameplate

NP3155L									
CAT.NO.	EL11319								
SPEC.	35E007G129								
HP	1.5								
VOLTS	115/230								
AMP	11.9/6.4								
RPM	1725								
FRAME	56H		HZ	60		PH	1		
SER.F.	1.15	CODE	J	DES	L	CL	F		
F.L. AVG. EFF.	83.8	PF	97						
RATING	40C AMB-CONT								
CC		USABLE AT 208V							
DE	6205	ODE	6203						
ENCL	ODP	SN							

AC Induction Motor Performance Data

Record # 83995

Typical performance - not guaranteed values

Winding: 35WGG129-R001		Type: 3536LC		Enclosure: ODP	
Nameplate Data			115 V, 60 Hz: Low Voltage Connection		
Rated Output (HP)	1.5		Full Load Torque	4.533 LB-FT	
Volts	115/230		Start Configuration	direct on line	
Full Load Amps	11.9/6.4		Breakdown Torque	11 LB-FT	
R.P.M.	1725		Pull-up Torque	9.32 LB-FT	
Hz	60 Phase	1	Locked-rotor Torque	14 LB-FT	
NEMA Design Code	L	KVA Code	J	Starting Current	93.3 A
Service Factor (S.F.)	1.15		No-load Current	1.94 A	
NEMA Nom. Eff.	83.8	Power Factor	97	Line-line Res. @ 25°C	0.47264 Ω A Ph 1.17 Ω B Ph
Rating - Duty	40C AMB-CONT		Temp. Rise @ Rated Load	46°C	
S.F. Amps			Temp. Rise @ S.F. Load	62°C	

Load Characteristics 115 V, 60 Hz, 1.5 HP

% of Rated Load	25	50	75	100	125	150	S.F.
Power Factor	92	96	97	97	97	96	97
Efficiency	72.7	82.9	85.2	84.2	80.7	75.6	82.1
Speed	1784.7	1771.3	1755.5	1738.3	1712.8	1680.2	1723
Line amperes	3.7	6.12	8.93	11.9	15.8	20.4	14.2

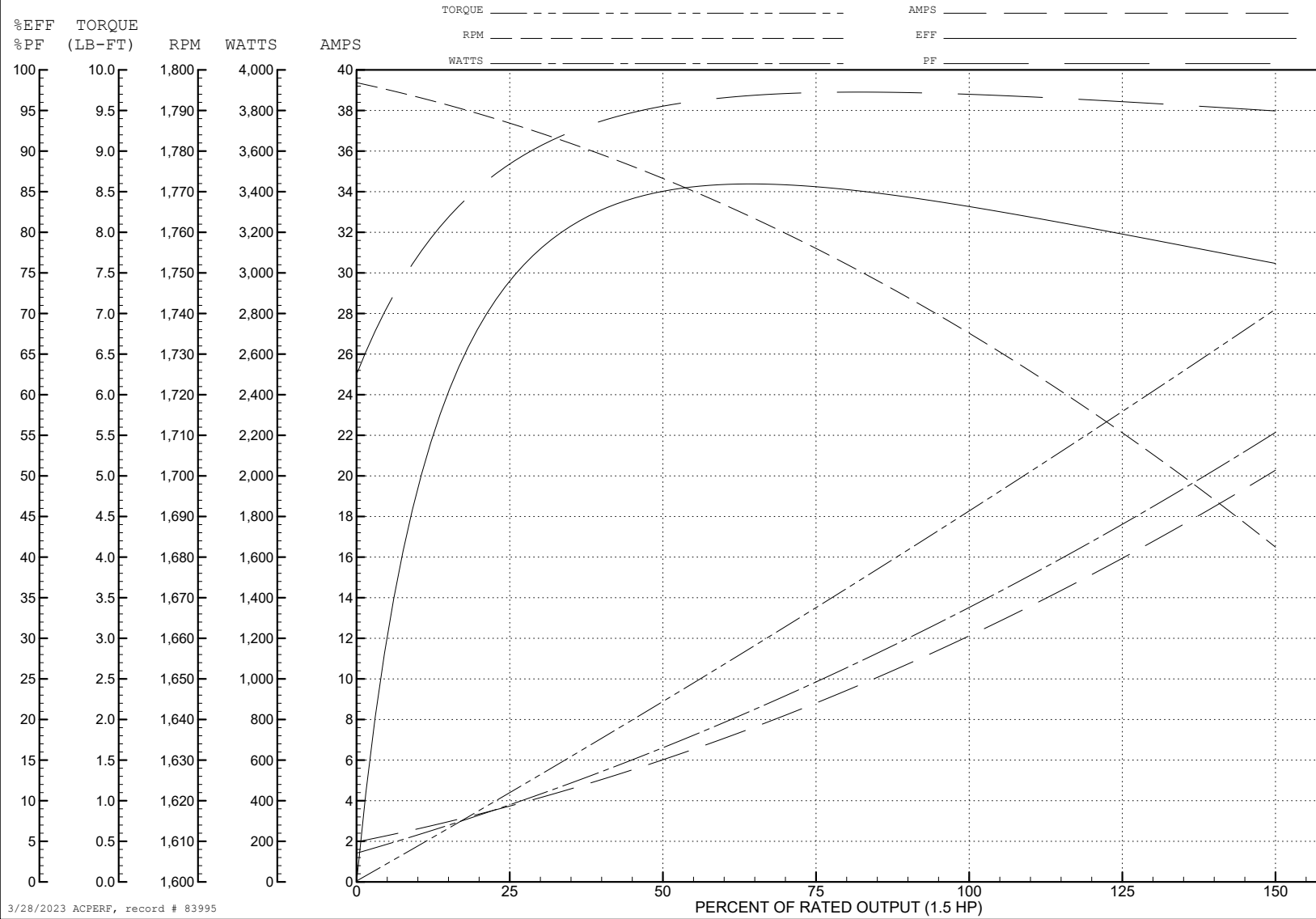
ABB Motors and Mechanical Inc.

WINDING # 35WGG129

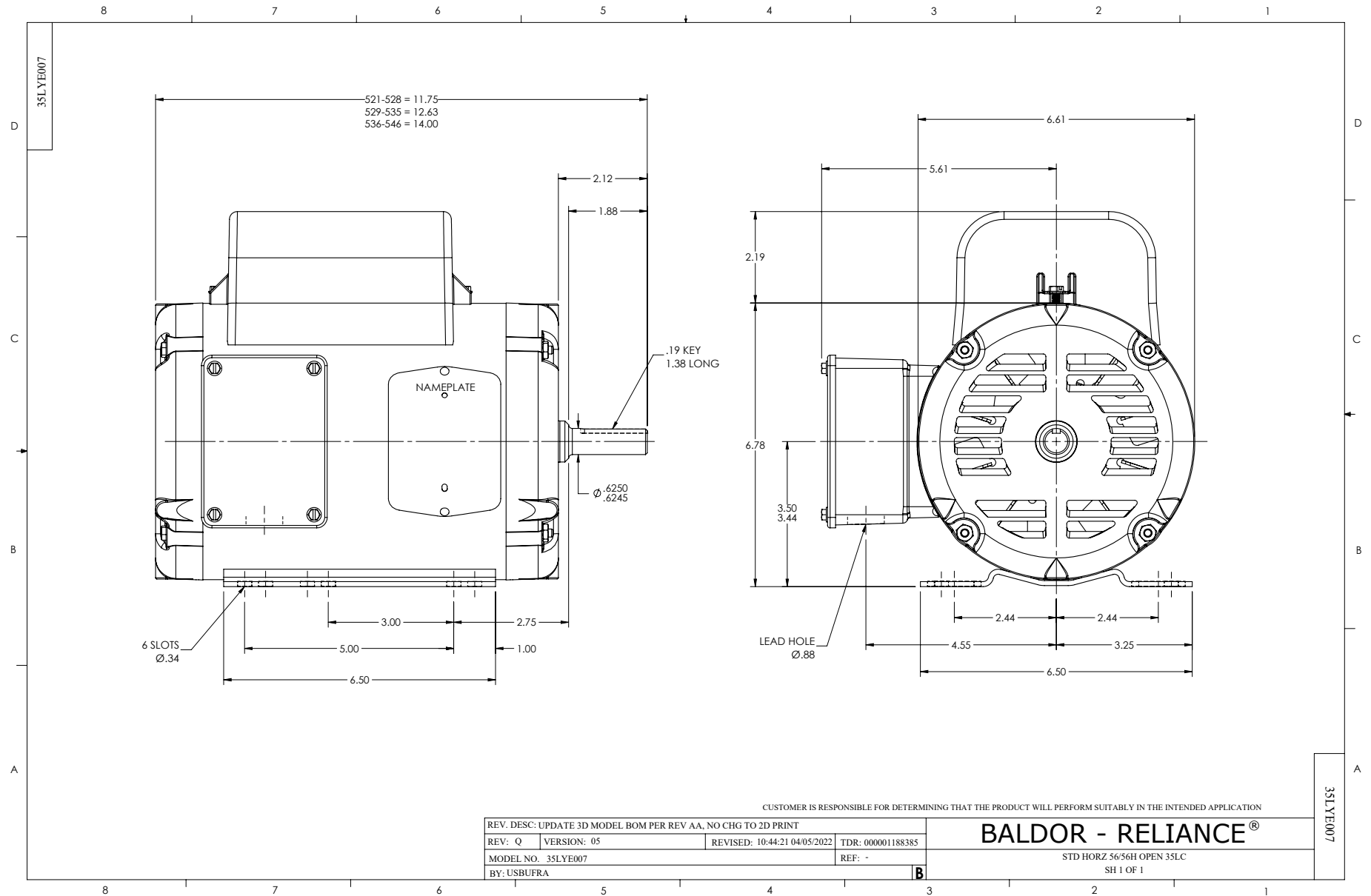
Typical performance - not guaranteed values.

1.5 HP 1 PH 60 HZ 1725 RPM 115 V 3536LC

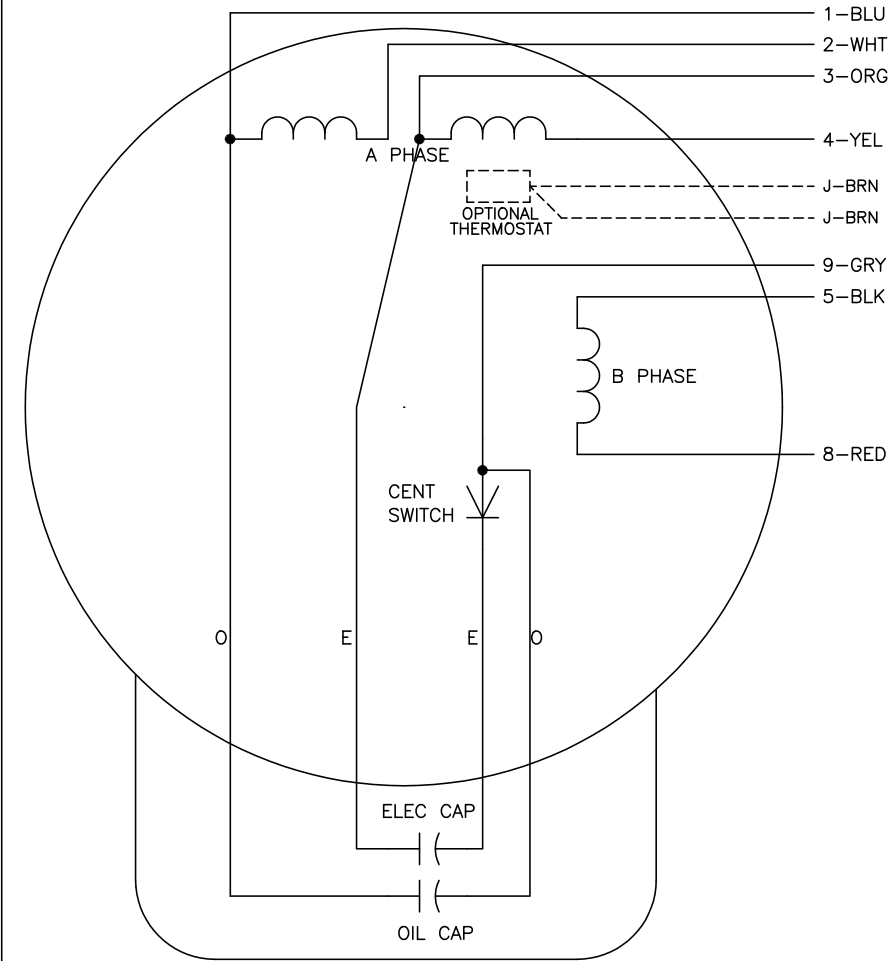
TORQUES (LB-FT): PO=11 PU=9.32 LR=14 LRA=93.3



3/28/2023 ACPERF, record # 83995



CD0016A01



	LINE A	LINE B	JOIN	JOIN
HIGH STD	1	4,5	2,3	8,9
HIGH OPP	1	4,8	2,3	5,9
LOW STD	1,3	2,4,5	8,9	-
LOW OPP	1,3	2,4,8	5,9	-

NOTES:

1. STANDARD ROTATION IS CCW FACING END OPPOSITE SHAFT EXTENSION.
2. OPTIONAL THERMOSTAT IS PROVIDED WHEN SPECIFIED.
3. MULTIPLE CAPACITORS ARE CONNECTED IN PARALLEL UNLESS OTHERWISE SPECIFIED.
4. LEAD COLORS ARE OPTIONAL. LEADS MUST ALWAYS BE NUMBERED AS SHOWN.

REV. DESC: REVISE TO SHOW OPTIONAL COLORS			
REV. LTR: E	BY: JLP	REVISED: 04/09/99 1:19	TDR: 0178636
10A91000		FILE: AAA00007410	MDL: -
		MTL: -	

BALDOR ELECTRIC Co.

TYPE LC, DV, REV, OIL CAP ACR. LINE, 7 LEADS

CD0016A01