

ABB BALDOR RELIANCE III

Customer information packet

EL11317A

2HP, 3470RPM, 1PH, 60HZ, 56H, 3540LC, OPEN, F1

Class - None

Division - Not Applicable

Specifications

Enclosure	OPEN
Frame	56H
Frame Material	Steel
Frequency	60.00 Hz
Haz Area Class and Group	None
Haz Area Division	Not Applicable
Motor Letter Type	Cap Start, Cap Run
Output @ Frequency	2.000 HP @ 60 HZ
Phase	1
Synchronous Speed @ Frequency	3600 RPM @ 60 HZ
Voltage @ Frequency	230.0 V @ 60 HZ 115.0 V @ 60 HZ
Agency Approvals	CURUSEEV
Ambient Temperature	40 °C
Auxiliary Box	NO AUXILLARY BOX
Auxiliary Box Lead Termination	None
Base Indicator	Rigid
Bearing Grease Type	Polyrex EM (-20F +300F)
Blower	None
Current @ Voltage	9.900 A @ 208.0 V 7.800 A @ 230.0 V 15.600 A @ 115.0 V
Design Code	L
Drip Cover	No Drip Cover
Duty Rating	CONT
Efficiency @ 100% Load	82.9 %
Electrically Isolated Bearing	Not Electrically Isolated
Feedback Device	NO FEEDBACK
Front Face Code	Standard
Front Shaft Indicator	None
Heater Indicator	No Heater
High Voltage Full Load Amps	7.8 a

Part Detail

Revision	M
Type	AC
Mech. spec.	35E2890
Base	
Status	PRD/A
Elec. spec.	35WGL153
Layout	35LYE2890
Eff. date	01-02-2025
CD Diagram	CD0881
Poles	02
Leads	6#16,1#14
Proprietary	False
Created date	09-29-2014

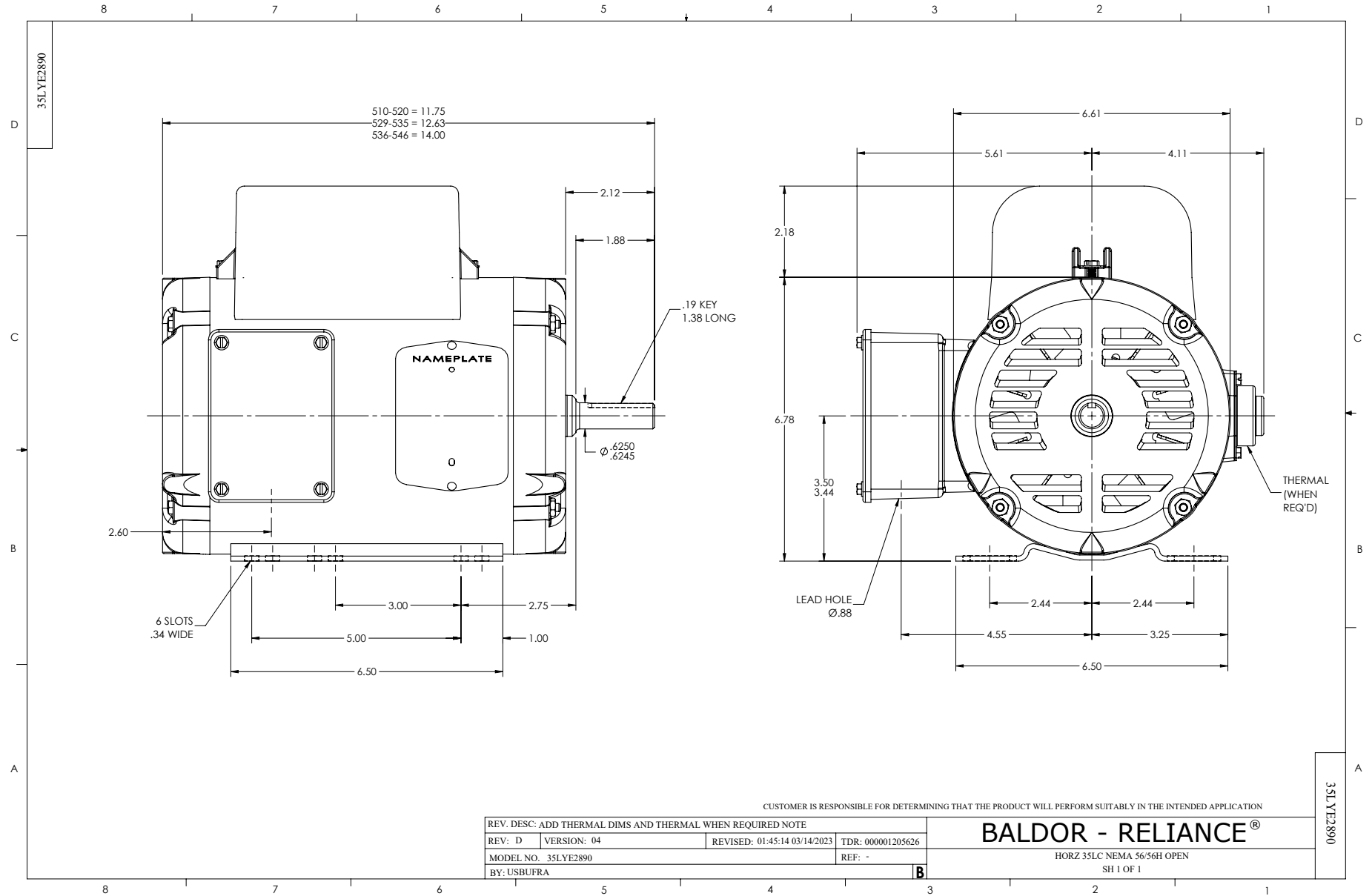
Insulation Class	B
Inverter Code	Not Inverter
KVA Code	G
Lifting Lugs	No Lifting Lugs
Locked Bearing Indicator	No Locked Bearing
Motor Lead Exit	Ko Box
Motor Lead Quantity/Wire Size	6 @ 16 AWG
Motor Lead Termination	Flying Leads
Motor Standards	NEMA
Motor Type	3540LC
Mounting Arrangement	F1
Number of Poles	2
Overall Length	14.00 IN
Power Factor	99
Product Family	General Purpose
Pulley End Bearing Type	Ball
Pulley Face Code	Standard
Pulley Shaft Indicator	Standard
Rodent Screen	None
RoHS Status	ROHS COMPLIANT
Service Factor	1.15
Shaft Diameter	0.625 IN
Shaft Extension Location	Pulley End
Shaft Ground Indicator	No Shaft Grounding
Shaft Rotation	Reversible
Shaft Slinger Indicator	No Slinger
Speed	3470 rpm
Speed Code	Single Speed
Starting Method	Direct on line
Thermal Device - Bearing	None
Thermal Device - Winding	Do Not Use Eve-Not Valiid
Vibration Sensor Indicator	No Vibration Sensor
Winding Thermal 1	Automatic Thermal Overload
Winding Thermal 1 Location	SB

Winding Thermal 2

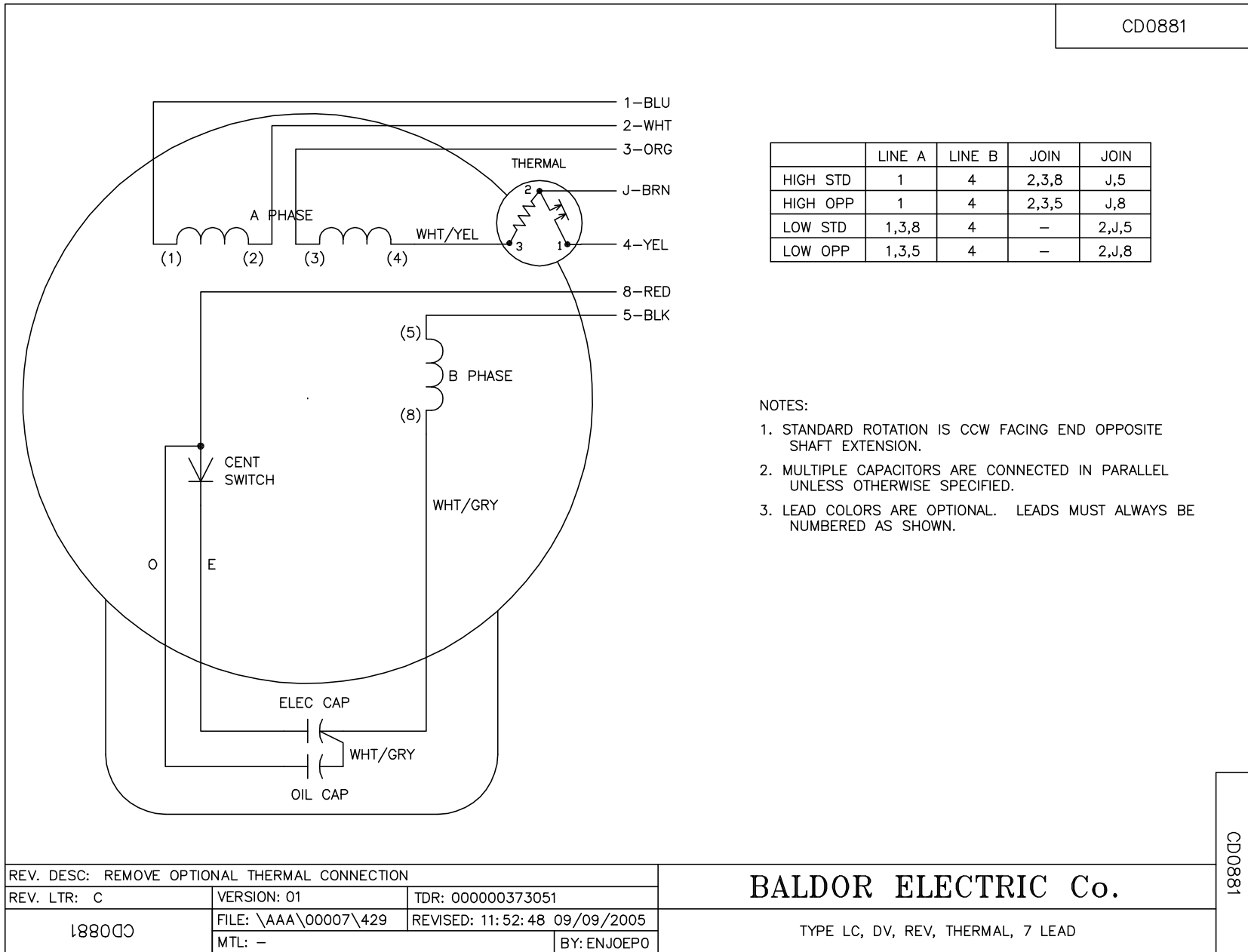
None

Nameplate

NP3273L									
CAT.NO.	EL11317A								
SPEC.	35E2890L153G1								
HP	2								
VOLTS	115/230								
AMP	15.6/7.8								
RPM	3470								
FRAME	56H	HZ	60	PH	1				
SER.F.	1.15	CODE	G	DES	L	CL	B		
F.L. AVG. EFF.	82.9	PF	99						
RATING	40C AMB-CONT								
CC									
DE	6205	ODE	6203						
ENCL	OPEN	SN							



CD0881



REV. DESC: REMOVE OPTIONAL THERMAL CONNECTION		
REV. LTR: C	VERSION: 01	TDR: 000000373051
1880C	FILE: \AAA\00007\429	REVISED: 11:52:48 09/09/2005
	MTL: -	BY: ENJOEPO

BALDOR ELECTRIC Co.

TYPE LC, DV, REV, THERMAL, 7 LEAD

CD0881