



Customer information packet

EL11310M

1HP, 1755RPM, 1PH, 60HZ, 56H, 3528LC, OPEN, F1

Class - None

Division - Not Applicable

Specifications

Enclosure	OPEN
Frame	56H
Frame Material	Steel
Frequency	60.00 Hz
Haz Area Class and Group	None
Haz Area Division	Not Applicable
Motor Letter Type	Cap Start, Cap Run
Output @ Frequency	1.000 HP @ 60 HZ
Phase	1
Synchronous Speed @ Frequency	1800 RPM @ 60 HZ
Voltage @ Frequency	115.0 V @ 60 HZ 230.0 V @ 60 HZ
Agency Approvals	CURUSEEV
Ambient Temperature	40 °C
Auxillary Box	No Auxillary Box
Auxillary Box Lead Termination	None
Base Indicator	Rigid
Bearing Grease Type	Polyrex EM (-20F +300F)
Blower	None
Current @ Voltage	4.500 A @ 230.0 V 9.000 A @ 115.0 V
Design Code	L
Drip Cover	No Drip Cover
Duty Rating	CONT
Efficiency @ 100% Load	82.6 %
Electrically Isolated Bearing	Not Electrically Isolated
Feedback Device	NO FEEDBACK
Front Face Code	Standard
Front Shaft Indicator	None
Heater Indicator	No Heater
High Voltage Full Load Amps	4.5 a
Insulation Class	F

Part detail

Revision	F
Type	AC
Mech. spec.	35E007
Base	
Status	PRD/A
Elec. spec.	35WGL164
Layout	35LYE007
Eff. date	04-29-2024
CD Diagram	CD0320
Poles	04
Leads	6#18,1#16 #4TH
Proprietary	False
Created date	10-01-2014

Inverter Code	Not Inverter
KVA Code	L
Lifting Lugs	No Lifting Lugs
Locked Bearing Indicator	No Locked Bearing
Motor Lead Exit	Ko Box
Motor Lead Quantity/Wire Size	6 @ 18 AWG
Motor Lead Termination	Flying Leads
Motor Standards	NEMA
Motor Type	3528LC
Mounting Arrangement	F1
Number of Poles	4
Overall Length	11.75 IN
Power Factor	86
Product Family	General Purpose
Pulley End Bearing Type	Ball
Pulley Face Code	Standard
Pulley Shaft Indicator	Standard
Rodent Screen	None
Service Factor	1.15
Shaft Diameter	0.625 IN
Shaft Extension Location	Pulley End
Shaft Ground Indicator	No Shaft Grounding
Shaft Rotation	Reversible
Shaft Slinger Indicator	No Slinger
Speed	1755 rpm
Speed Code	Single Speed
Starting Method	Direct on line
Thermal Device - Bearing	None
Thermal Device - Winding	None
Vibration Sensor Indicator	No Vibration Sensor
Winding Thermal 1	Manual Thermal Overload
Winding Thermal 1 Location	SB
Winding Thermal 2	None

Nameplate

NP3273L									
CAT.NO.	EL11310M								
SPEC.	35E007L164G2								
HP	1								
VOLTS	115/230								
AMP	9/4.5								
RPM	1755								
FRAME	56H		HZ	60		PH	1		
SER.F.	1.15	CODE	L	DES	L	CL	F		
F.L. AVG. EFF.	82.6	PF	86						
RATING	40C AMB-CONT								
CC			USABLE AT 208V				N/A		
DE	6205		ODE	6203					
ENCL	OPEN	SN							

AC Induction Motor Performance Data

Record # 50383

Typical performance - not guaranteed values

Winding: 35WGL164-R001		Type: 3528LC		Enclosure: OPEN	
Nameplate Data			115 V, 60 Hz: Low Voltage Connection		
Rated Output (HP)		1	Full Load Torque		2.99 LB-FT
Volts		115/230	Start Configuration		direct on line
Full Load Amps		9/4.5	Breakdown Torque		7.91 LB-FT
R.P.M.		1755	Pull-up Torque		6.01 LB-FT
Hz	60 Phase	1	Locked-rotor Torque		9.15 LB-FT
NEMA Design Code	L KVA Code	L	Starting Current		74 A
Service Factor (S.F.)		1.15	No-load Current		4.38 A
NEMA Nom. Eff.	82.6 Power Factor	86	Line-line Res. @ 25°C		0.581 Ω A Ph 2.18 Ω B Ph
Rating - Duty		40C AMB-CONT	Temp. Rise @ Rated Load		36°C
S.F. Amps			Temp. Rise @ S.F. Load		43°C
			Locked-rotor Power Factor		88.3
			Rotor inertia		0.166 LB-FT ²

Load Characteristics 115 V, 60 Hz, 1 HP

% of Rated Load	25	50	75	100	125	150	S.F.
Power Factor	54	71	80	85	88	90	87
Efficiency	64	76.1	79.5	80.8	79.8	77.2	80.2
Speed	1786	1773	1761	1745	1728	1707	1735
Line amperes	4.94	6.04	7.62	9.34	11.4	13.6	10.6

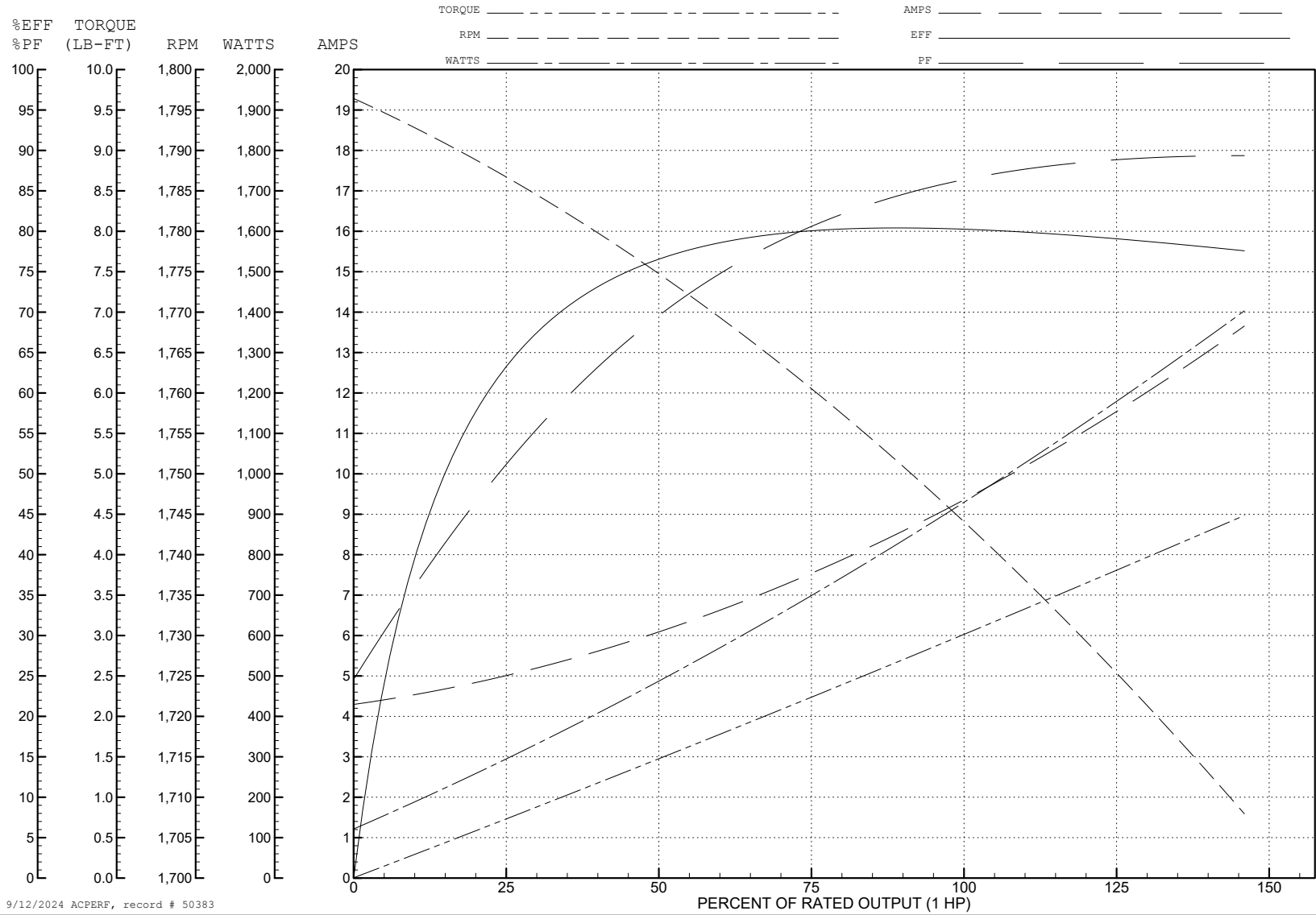
ABB Motors and Mechanical Inc.

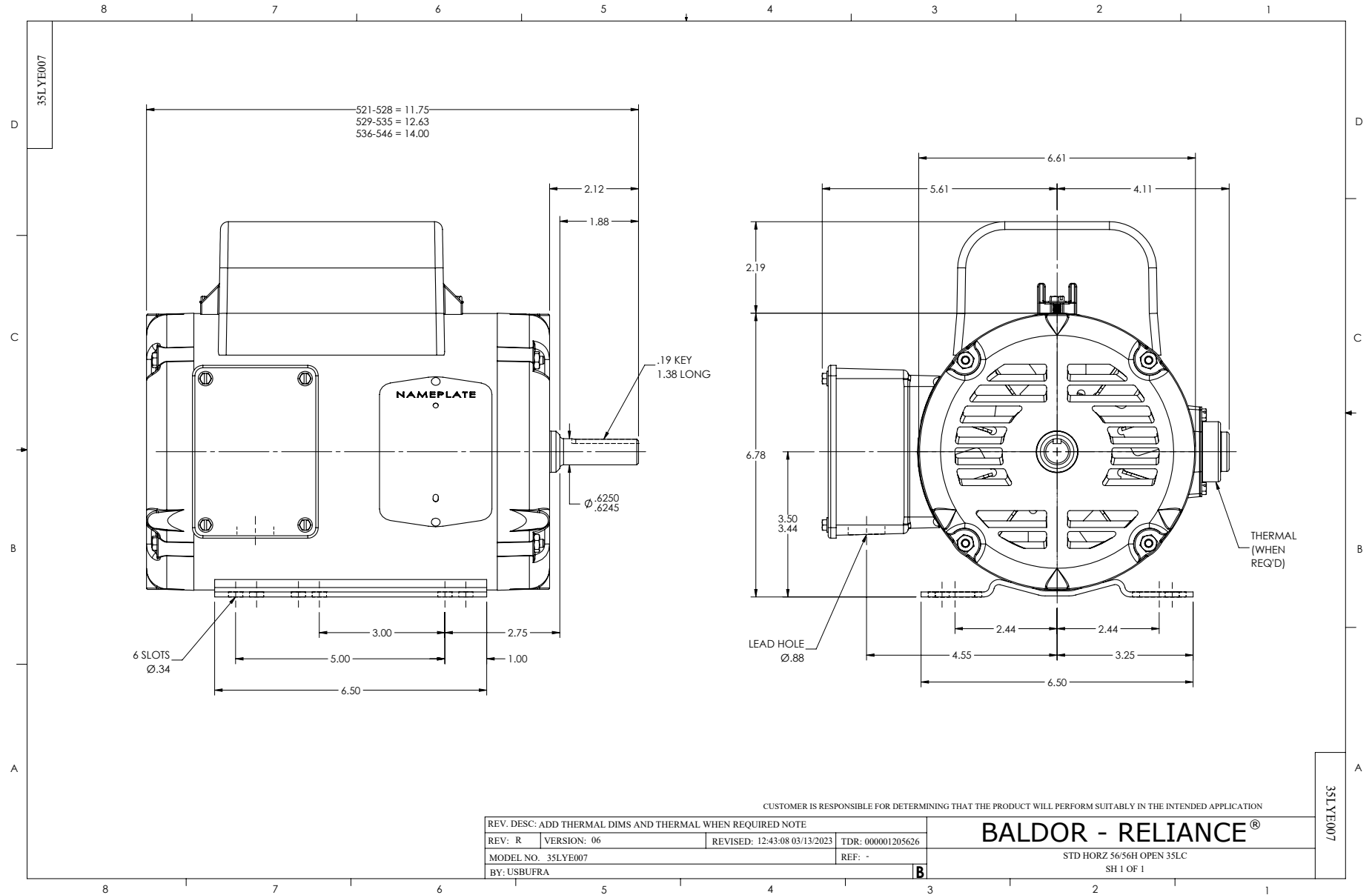
WINDING # 35WGL164

Typical performance - not guaranteed values.

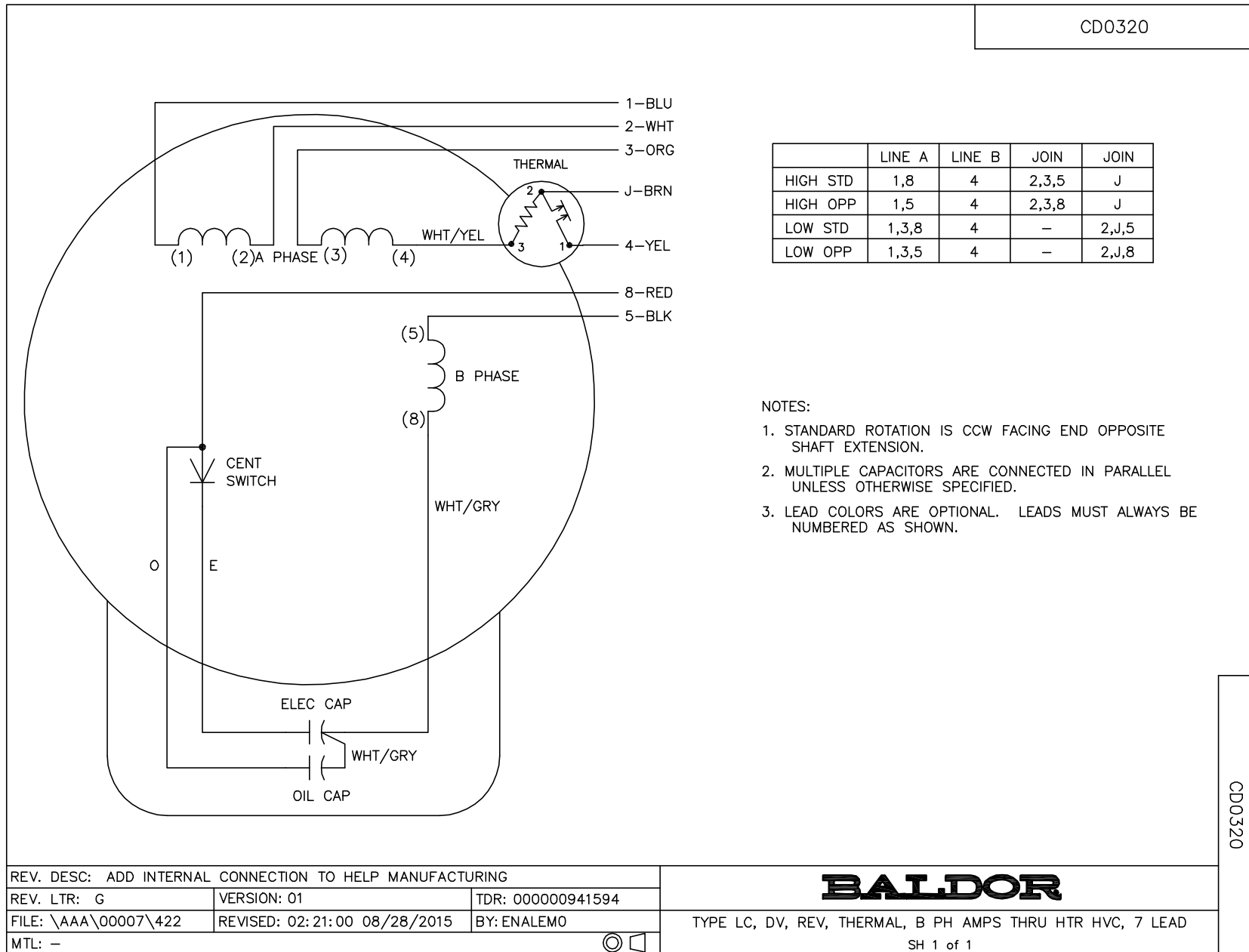
1 HP 1 PH 60 HZ 1755 RPM 115 V 3528LC

TORQUES (LB-FT): PO=7.91 PU=6.01 LR=9.15 LRA=74





CD0320



	LINE A	LINE B	JOIN	JOIN
HIGH STD	1,8	4	2,3,5	J
HIGH OPP	1,5	4	2,3,8	J
LOW STD	1,3,8	4	-	2,J,5
LOW OPP	1,3,5	4	-	2,J,8

NOTES:

1. STANDARD ROTATION IS CCW FACING END OPPOSITE SHAFT EXTENSION.
2. MULTIPLE CAPACITORS ARE CONNECTED IN PARALLEL UNLESS OTHERWISE SPECIFIED.
3. LEAD COLORS ARE OPTIONAL. LEADS MUST ALWAYS BE NUMBERED AS SHOWN.

CD0320

REV. DESC: ADD INTERNAL CONNECTION TO HELP MANUFACTURING		
REV. LTR: G	VERSION: 01	TDR: 00000941594
FILE: \AAA\00007\422	REVISED: 02:21:00 08/28/2015	BY: ENALEMO
MTL: -		© □

BALDOR

TYPE LC, DV, REV, THERMAL, B PH AMPS THRU HTR HVC, 7 LEAD
SH 1 of 1