

# ABB BALDOR RELIANCE III

---

## Customer information packet

EL11306

.75HP, 3450RPM, 1PH, 60HZ, 56, 3428LC, ODP, F1

Class - None

Division - Not Applicable

**Specifications**

<b>Enclosure</b>	ODP
<b>Frame</b>	56
<b>Frame Material</b>	Steel
<b>Frequency</b>	60.00 Hz
<b>Haz Area Class and Group</b>	None
<b>Haz Area Division</b>	Not Applicable
<b>Motor Letter Type</b>	Cap Start, Cap Run
<b>Output @ Frequency</b>	.750 HP @ 60 HZ
<b>Phase</b>	1
<b>Synchronous Speed @ Frequency</b>	3600 RPM @ 60 HZ
<b>Voltage @ Frequency</b>	115.0 V @ 60 HZ 230.0 V @ 60 HZ
<b>Agency Approvals</b>	CURUSEEV CURUS
<b>Ambient Temperature</b>	40 °C
<b>Auxiliary Box</b>	NO AUXILLARY BOX
<b>Auxiliary Box Lead Termination</b>	None
<b>Base Indicator</b>	Rigid
<b>Bearing Grease Type</b>	Polyrex EM (-20F +300F)
<b>Blower</b>	None
<b>Current @ Voltage</b>	3.300 A @ 230.0 V 6.300 A @ 115.0 V
<b>Design Code</b>	N
<b>Drip Cover</b>	No Drip Cover
<b>Duty Rating</b>	CONT
<b>Efficiency @ 100% Load</b>	76.2 %
<b>Electrically Isolated Bearing</b>	Not Electrically Isolated
<b>Feedback Device</b>	NO FEEDBACK
<b>Front Face Code</b>	Standard
<b>Front Shaft Indicator</b>	None
<b>Heater Indicator</b>	No Heater
<b>High Voltage Full Load Amps</b>	3.3 a

**Part Detail**

<b>Revision</b>	K
<b>Type</b>	AC
<b>Mech. spec.</b>	34F353
<b>Base</b>	
<b>Status</b>	PRD/A
<b>Elec. spec.</b>	34WGS943
<b>Layout</b>	34LYF353
<b>Eff. date</b>	12-31-2024
<b>CD Diagram</b>	CD0055
<b>Poles</b>	02
<b>Leads</b>	6#18
<b>Proprietary</b>	False
<b>Created date</b>	02-28-2014

<b>Insulation Class</b>	F
<b>Inverter Code</b>	Not Inverter
<b>KVA Code</b>	J
<b>Lifting Lugs</b>	No Lifting Lugs
<b>Locked Bearing Indicator</b>	No Locked Bearing
<b>Motor Lead Exit</b>	Ko Box
<b>Motor Lead Quantity/Wire Size</b>	6 @ 18 AWG
<b>Motor Lead Termination</b>	Flying Leads
<b>Motor Standards</b>	NEMA
<b>Motor Type</b>	3428LC
<b>Mounting Arrangement</b>	F1
<b>Number of Poles</b>	2
<b>Overall Length</b>	11.00 IN
<b>Power Factor</b>	95
<b>Product Family</b>	General Purpose
<b>Pulley End Bearing Type</b>	Ball
<b>Pulley Face Code</b>	Standard
<b>Pulley Shaft Indicator</b>	Standard
<b>Rodent Screen</b>	None
<b>RoHS Status</b>	ROHS COMPLIANT
<b>Service Factor</b>	1.25
<b>Shaft Diameter</b>	0.625 IN
<b>Shaft Extension Location</b>	Pulley End
<b>Shaft Ground Indicator</b>	No Shaft Grounding
<b>Shaft Rotation</b>	Reversible
<b>Shaft Slinger Indicator</b>	No Slinger
<b>Speed</b>	3450 rpm
<b>Speed Code</b>	Single Speed
<b>Starting Method</b>	Direct on line
<b>Thermal Device - Bearing</b>	None
<b>Thermal Device - Winding</b>	None
<b>Vibration Sensor Indicator</b>	No Vibration Sensor
<b>Winding Thermal 1</b>	None
<b>Winding Thermal 2</b>	None

**Nameplate**

<b>NP3155L</b>									
<b>CAT.NO.</b>	EL11306								
<b>SPEC.</b>	34F353S943G1								
<b>HP</b>	.75								
<b>VOLTS</b>	115/230								
<b>AMP</b>	6.3/3.3								
<b>RPM</b>	3450								
<b>FRAME</b>	56	<b>HZ</b>	60	<b>PH</b>	1				
<b>SER.F.</b>	1.25	<b>CODE</b>	J	<b>DES</b>	N	<b>CL</b>	F		
<b>F.L. AVG. EFF.</b>	76.2	<b>PF</b>	95						
<b>RATING</b>	40C AMB-CONT								
<b>CC</b>									
<b>DE</b>	6203	<b>ODE</b>	6203						
<b>ENCL</b>	ODP	<b>SN</b>							
	SFA 8.4/4.2								

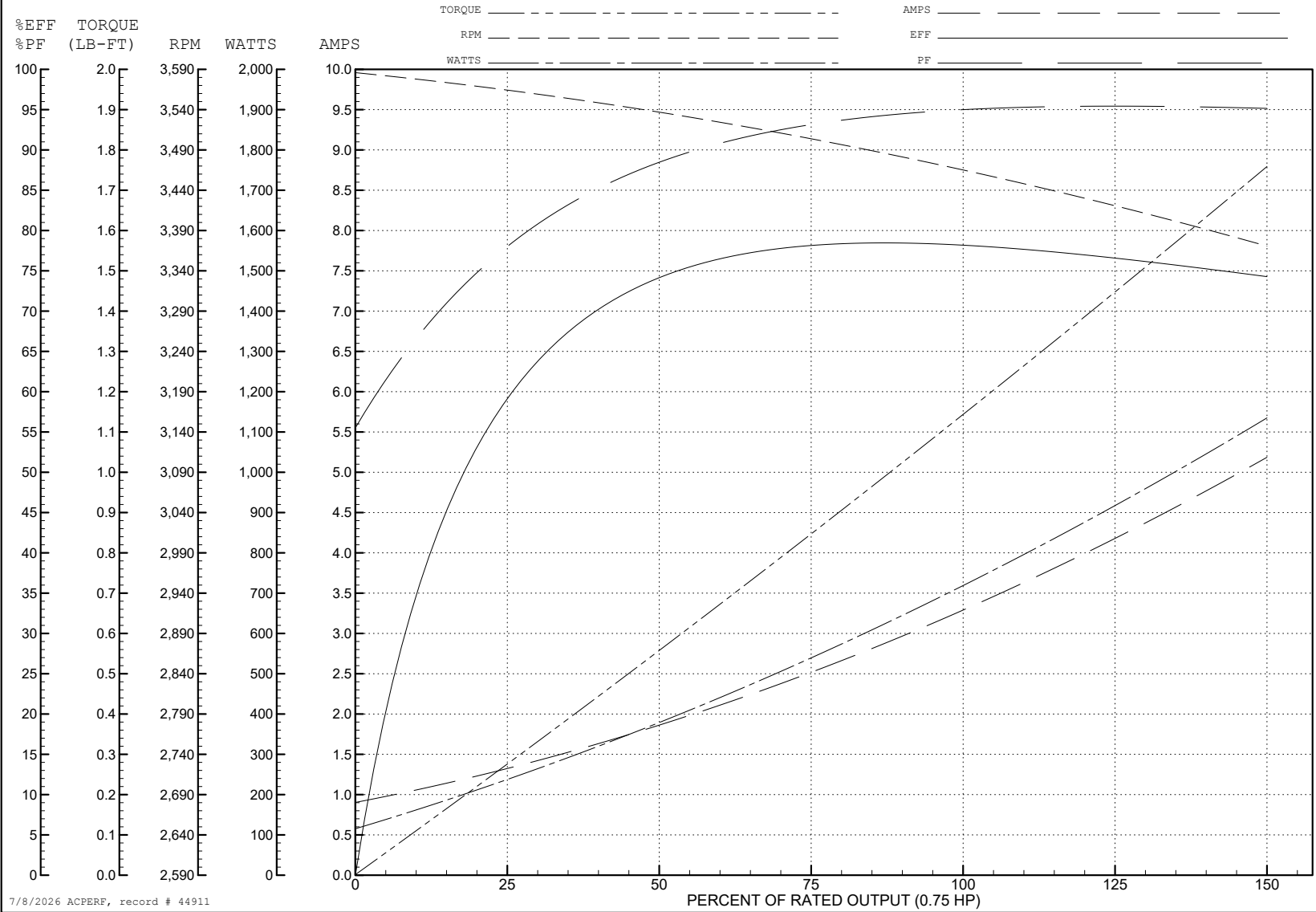
ABB Motors and Mechanical Inc.

WINDING # 34WGS943

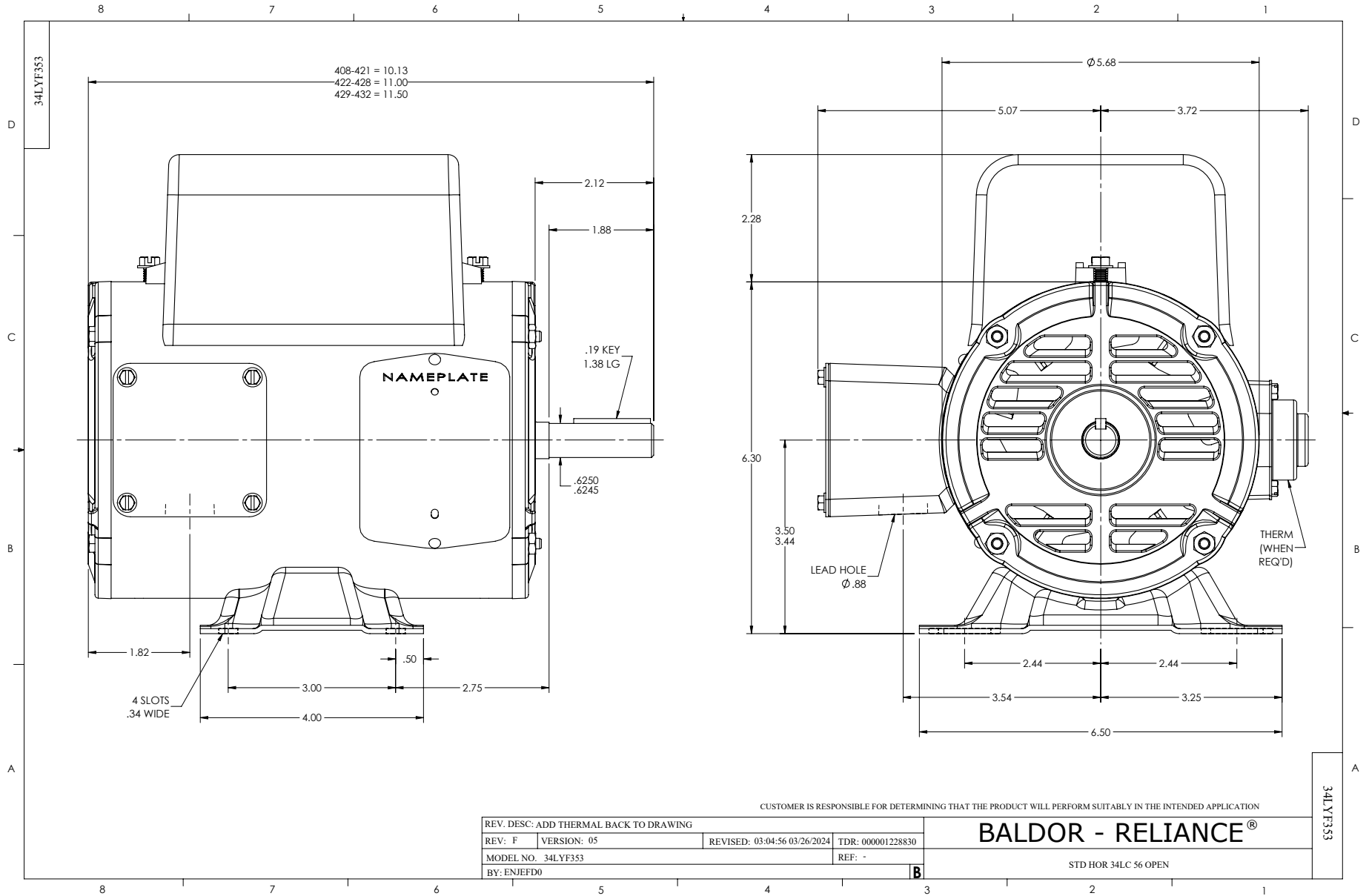
0.75 HP 1 PH 60 HZ 3450 RPM 230 V 3428LC

Typical performance - not guaranteed values.

TORQUES (LB-FT): PO=3.88 PU=2.07 LR=3.92 LRA=24.8



7/8/2026 ACPERF, record # 44911



CD0055

