



Customer information packet

EL11209M

.5HP, 1725RPM, 1PH, 60HZ, 48, 3424LC, OPEN, F1

Class - None

Division - Not Applicable

Specifications

| | |
|--------------------------------|---|
| Enclosure | OPEN |
| Frame | 48 |
| Frame Material | Steel |
| Frequency | 60.00 Hz |
| Haz Area Class and Group | None |
| Haz Area Division | Not Applicable |
| Motor Letter Type | Cap Start, Cap Run |
| Output @ Frequency | .500 HP @ 60 HZ |
| Phase | 1 |
| Synchronous Speed @ Frequency | 1800 RPM @ 60 HZ |
| Voltage @ Frequency | 230.0 V @ 60 HZ 115.0 V @ 60 HZ |
| Agency Approvals | CURUSEEV |
| Ambient Temperature | 40 °C |
| Auxillary Box | No Auxillary Box |
| Auxillary Box Lead Termination | None |
| Base Indicator | Rigid |
| Bearing Grease Type | Polyrex EM (-20F +300F) |
| Blower | None |
| Current @ Voltage | 4.400 A @ 115.0 V 2.500 A @ 208.0 V 2.200 A @ 230.0 V |
| Design Code | N |
| Drip Cover | No Drip Cover |
| Duty Rating | CONT |
| Efficiency @ 100% Load | 76.2 % |
| Electrically Isolated Bearing | Not Electrically Isolated |
| Feedback Device | NO FEEDBACK |
| Front Face Code | Standard |
| Front Shaft Indicator | None |
| Heater Indicator | No Heater |
| High Voltage Full Load Amps | 2.2 a |

Part detail

| | |
|--------------|------------|
| Revision | G |
| Type | AC |
| Mech. spec. | 34F868 |
| Base | |
| Status | PRD/A |
| Elec. spec. | 34WGR217 |
| Layout | 34LYF868 |
| Eff. date | 06-15-2023 |
| CD Diagram | CD0881 |
| Poles | 04 |
| Leads | 7#18 |
| Proprietary | False |
| Created date | 10-02-2014 |

| | |
|--------------------------------------|-------------------------|
| Insulation Class | F |
| Inverter Code | Not Inverter |
| KVA Code | K |
| Lifting Lugs | No Lifting Lugs |
| Locked Bearing Indicator | No Locked Bearing |
| Motor Lead Exit | Ko Box |
| Motor Lead Quantity/Wire Size | 7 @ 18 AWG |
| Motor Lead Termination | Flying Leads |
| Motor Standards | NEMA |
| Motor Type | 3424LC |
| Mounting Arrangement | F1 |
| Number of Poles | 4 |
| Overall Length | 10.63 IN |
| Power Factor | 98 |
| Product Family | General Purpose |
| Pulley End Bearing Type | Ball |
| Pulley Face Code | Standard |
| Pulley Shaft Indicator | Standard |
| Rodent Screen | None |
| RoHS Status | ROHS COMPLIANT |
| Service Factor | 1.25 |
| Shaft Diameter | 0.500 IN |
| Shaft Extension Location | Pulley End |
| Shaft Ground Indicator | No Shaft Grounding |
| Shaft Rotation | Reversible |
| Shaft Slinger Indicator | No Slinger |
| Speed | 1725 rpm |
| Speed Code | Single Speed |
| Starting Method | Direct on line |
| Thermal Device - Bearing | None |
| Thermal Device - Winding | None |
| Vibration Sensor Indicator | No Vibration Sensor |
| Winding Thermal 1 | Manual Thermal Overload |
| Winding Thermal 1 Location | SB |

Winding Thermal 2

None

Nameplate

| NP3273L | | | | | | | | | |
|-----------------------|--------------|-------------|------|------------|---|-----------|-----------------------|-----|--|
| CAT.NO. | EL11209M | | | | | | | | |
| SPEC. | 34F868R217G1 | | | | | | | | |
| HP | .5 | | | | | | | | |
| VOLTS | 115/230 | | | | | | | | |
| AMP | 4.4/2.2 | | | | | | | | |
| RPM | 1725 | | | | | | | | |
| FRAME | 48 | HZ | 60 | PH | 1 | | | | |
| SER.F. | 1.25 | CODE | K | DES | N | CL | F | | |
| F.L. AVG. EFF. | 76.2 | PF | 98 | | | | | | |
| RATING | 40C AMB-CONT | | | | | | | | |
| CC | | | | | | | USABLE AT 208V | N/A | |
| DE | 6203 | ODE | 6203 | | | | | | |
| ENCL | OPEN | SN | | | | | | | |
| SFA 5.8/2.9 | | | | | | | | | |

AC Induction Motor Performance Data

Record # 62065

Typical performance - not guaranteed values

| Winding: 34WGR217-R002 | | Type: 3424LC | Enclosure: OPEN | |
|------------------------|-------------------|-------------------------|---|--------------------------------|
| Nameplate Data | | | 115 V, 60 Hz: Low Voltage Connection | |
| Rated Output (HP) | .5 | Full Load Torque | 1.51 LB-FT | |
| Volts | 115/230 | Start Configuration | direct on line | |
| Full Load Amps | 4.4/2.2 | Breakdown Torque | 4.01 LB-FT | |
| R.P.M. | 1725 | Pull-up Torque | 3.75 LB-FT | |
| Hz | 60 Phase | 1 | Locked-rotor Torque | 6.42 LB-FT |
| NEMA Design Code | N KVA Code | K | Starting Current | 31.9 A |
| Service Factor (S.F.) | 1.25 | No-load Current | 1.06 A | |
| NEMA Nom. Eff. | 76.2 Power Factor | 98 | Line-line Res. @ 25°C | 1.6786 Ω A Ph 2.0496 Ω B Ph |
| Rating - Duty | 40C AMB-CONT | Temp. Rise @ Rated Load | 37°C | |
| S.F. Amps | 5.8/2.9 | Temp. Rise @ S.F. Load | 55°C | |

Load Characteristics 115 V, 60 Hz, 0.5 HP

| % of Rated Load | 25 | 50 | 75 | 100 | 125 | 150 | S.F. |
|-----------------|--------|--------|--------|--------|--------|--------|------|
| Power Factor | 89 | 94 | 95 | 95 | 95 | 94 | 95 |
| Efficiency | 59.9 | 73 | 76.8 | 76.6 | 73.3 | 67.1 | 73.3 |
| Speed | 1782.8 | 1767.7 | 1748.6 | 1726.8 | 1694.2 | 1648.1 | 1694 |
| Line amperes | 1.56 | 2.34 | 3.34 | 4.39 | 5.8 | 7.69 | 5.8 |

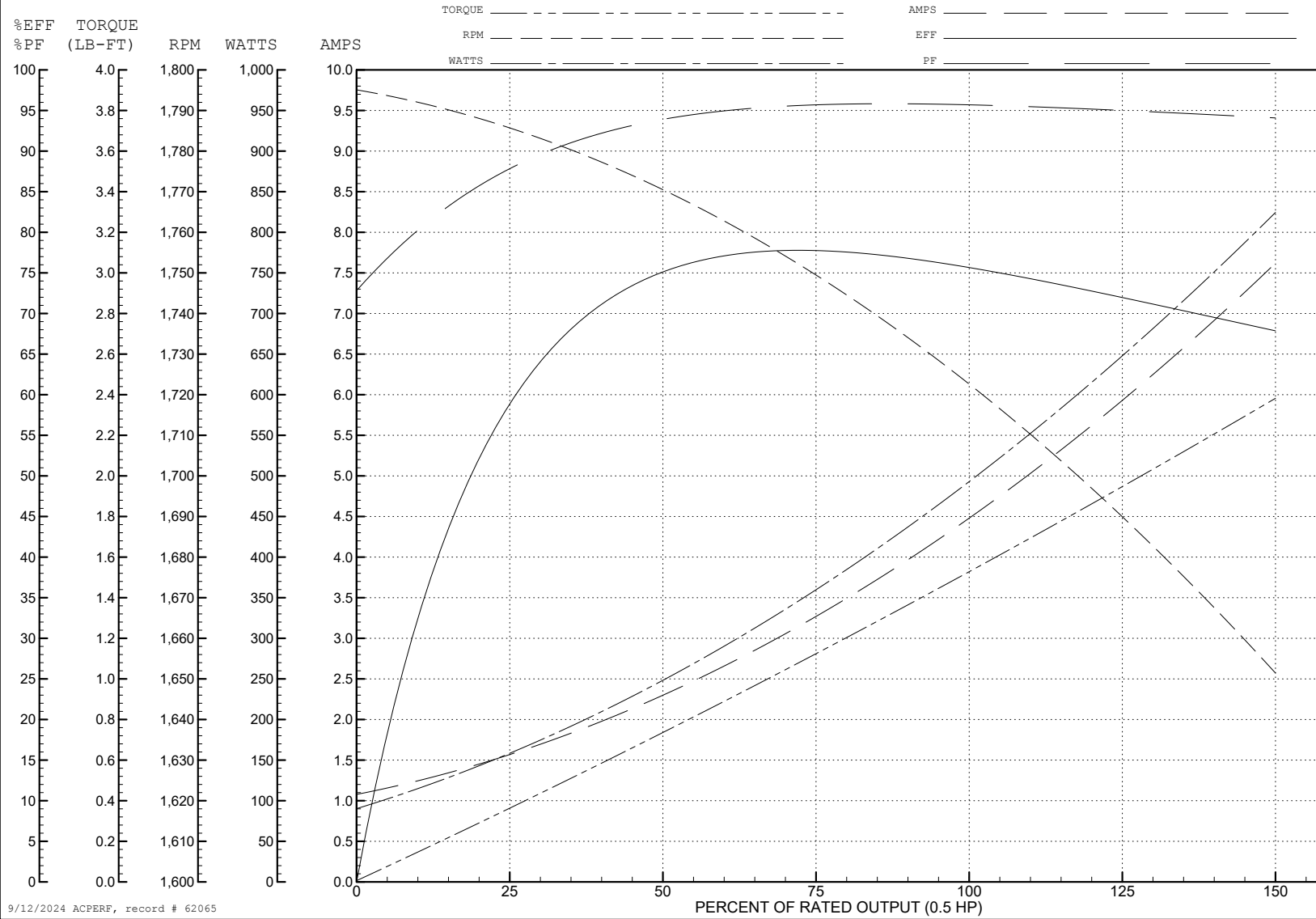
ABB Motors and Mechanical Inc.

WINDING # 34WGR217

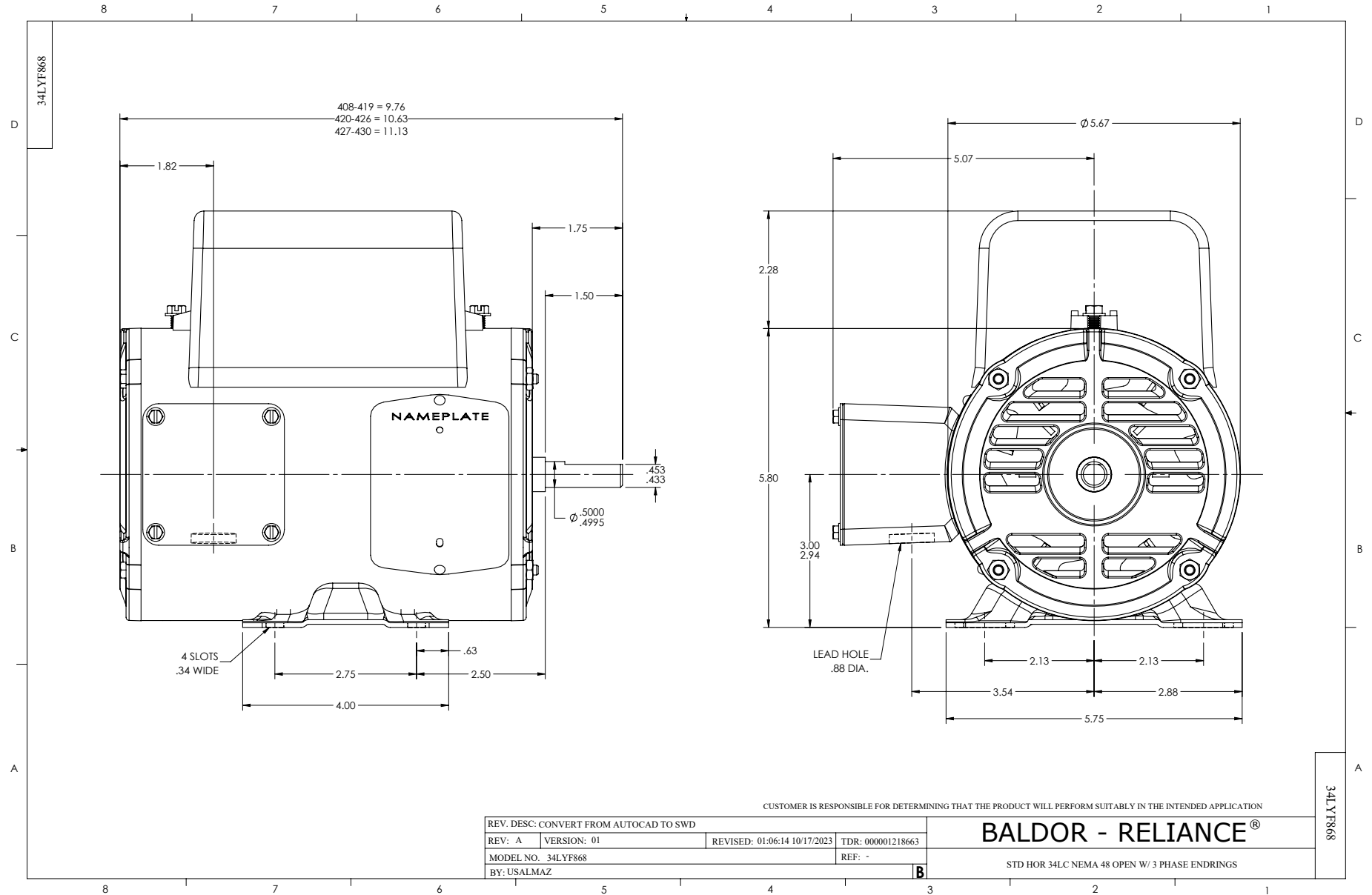
Typical performance - not guaranteed values.

0.5 HP 1 PH 60 HZ 1725 RPM 115 V 3424LC

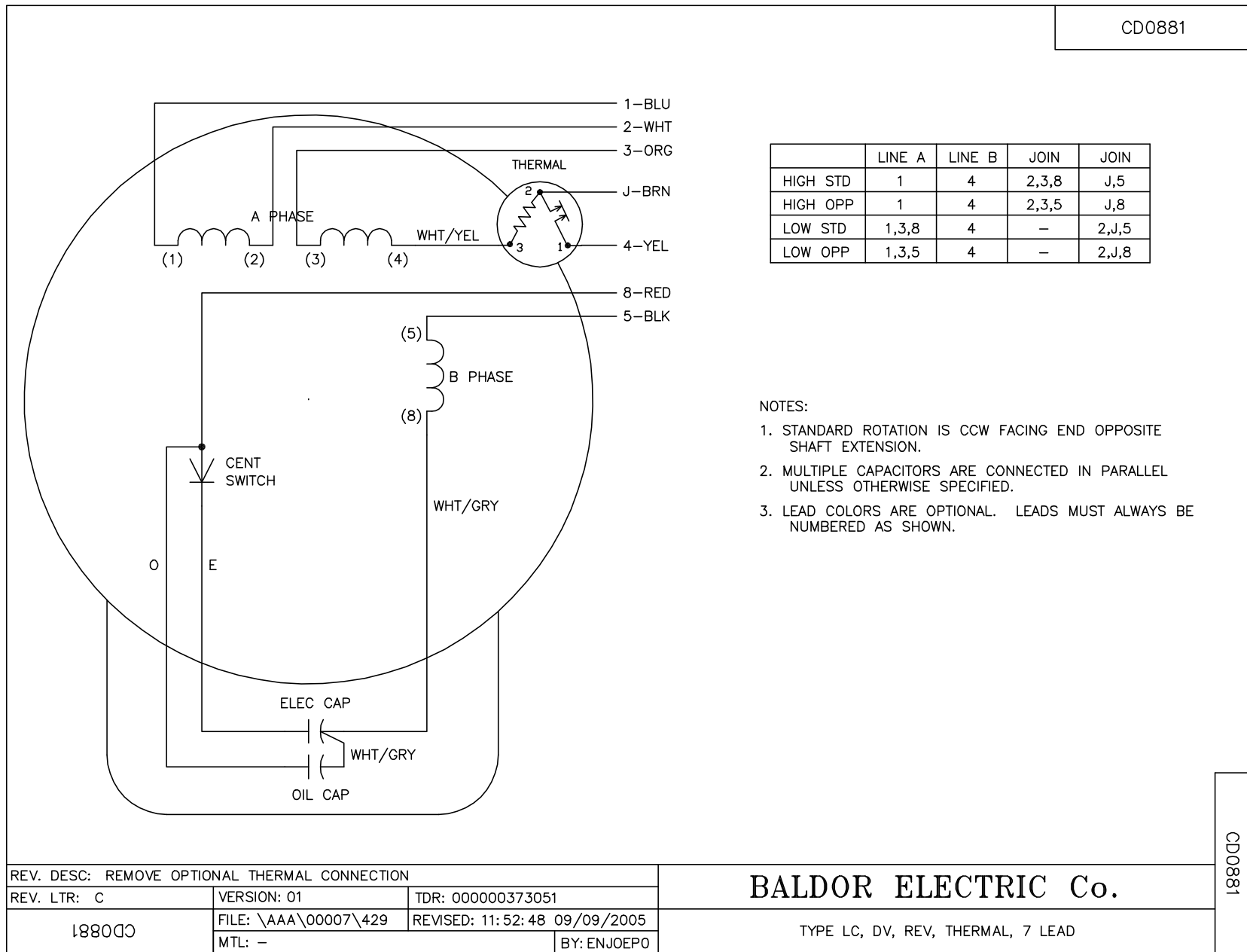
TORQUES (LB-FT): PO=4.01 PU=3.75 LR=6.42 LRA=31.9



9/12/2024 ACPERF, record # 62065



CD0881



| | | |
|---|----------------------|------------------------------|
| REV. DESC: REMOVE OPTIONAL THERMAL CONNECTION | | |
| REV. LTR: C | VERSION: 01 | TDR: 000000373051 |
| 18800 | FILE: \AAA\00007\429 | REVISED: 11:52:48 09/09/2005 |
| | MTL: - | BY: ENJOEPO |

BALDOR ELECTRIC Co.

TYPE LC, DV, REV, THERMAL, 7 LEAD

CD0881