

BALDOR • RELIANCE

Customer information packet

EL11206M

.33HP, 1740RPM, 1PH, 60HZ, 48, 3418LC, OPEN, F1

Class - None

Division - Not Applicable

Specifications

Enclosure	OPEN
Frame	48
Frame Material	Steel
Frequency	60.00 Hz
Haz Area Class and Group	None
Haz Area Division	Not Applicable
Motor Letter Type	Cap Start, Cap Run
Output @ Frequency	.330 HP @ 60 HZ
Phase	1
Synchronous Speed @ Frequency	1800 RPM @ 60 HZ
Voltage @ Frequency	230.0 V @ 60 HZ 115.0 V @ 60 HZ
Agency Approvals	CURUSEEV
Ambient Temperature	40 °C
Auxillary Box	No Auxillary Box
Auxillary Box Lead Termination	None
Base Indicator	Rigid
Bearing Grease Type	Polyrex EM (-20F +300F)
Blower	None
Current @ Voltage	3.400 A @ 115.0 V 1.800 A @ 208.0 V 1.700 A @ 230.0 V
Design Code	N
Drip Cover	No Drip Cover
Duty Rating	CONT
Efficiency @ 100% Load	72.4 %
Electrically Isolated Bearing	Not Electrically Isolated
Feedback Device	NO FEEDBACK
Front Face Code	Standard
Front Shaft Indicator	None
Heater Indicator	No Heater
High Voltage Full Load Amps	1.7 a

Part detail

Revision	F
Type	AC
Mech. spec.	34F351
Base	
Status	PRD/A
Elec. spec.	34WGR216
Layout	34LYF351
Eff. date	12-31-2024
CD Diagram	CD0320
Poles	04
Leads	7#18
Proprietary	False
Created date	01-27-2017

Insulation Class	F
Inverter Code	Not Inverter
KVA Code	K
Lifting Lugs	No Lifting Lugs
Locked Bearing Indicator	No Locked Bearing
Motor Lead Exit	Ko Box
Motor Lead Quantity/Wire Size	7 @ 18 AWG
Motor Lead Termination	Flying Leads
Motor Standards	NEMA
Motor Type	3418LC
Mounting Arrangement	F1
Number of Poles	4
Overall Length	9.76 IN
Power Factor	85
Product Family	General Purpose
Pulley End Bearing Type	Ball
Pulley Face Code	Standard
Pulley Shaft Indicator	Standard
Rodent Screen	None
RoHS Status	ROHS COMPLIANT
Service Factor	1.35
Shaft Diameter	0.500 IN
Shaft Extension Location	Pulley End
Shaft Ground Indicator	No Shaft Grounding
Shaft Rotation	Reversible
Shaft Slinger Indicator	No Slinger
Speed	1740 rpm
Speed Code	Single Speed
Starting Method	Direct on line
Thermal Device - Bearing	None
Thermal Device - Winding	None
Vibration Sensor Indicator	No Vibration Sensor
Winding Thermal 1	Manual Thermal Overload
Winding Thermal 1 Location	SB

Winding Thermal 2

None

Nameplate

NP3273L									
CAT.NO.	EL11206M								
SPEC.	34F351R216G1								
HP	.33								
VOLTS	115/230								
AMP	3.4/1.7								
RPM	1740								
FRAME	48		HZ	60		PH	1		
SER.F.	1.35	CODE	K	DES	N	CL	F		
F.L. AVG. EFF.	72.4	PF	85						
RATING	40C AMB-CONT								
CC									
DE	6203		ODE	6203					
ENCL	OPEN	SN							
	SFA 4.4/2.2								

AC Induction Motor Performance Data

Record # 62083

Typical performance - not guaranteed values

Winding: 34WGR216-R002		Type: 3418LC		Enclosure: OPEN	
Nameplate Data			115 V, 60 Hz: Low Voltage Connection		
Rated Output (HP)	.33	Full Load Torque	0.996 LB-FT		
Volts	115/230	Start Configuration	direct on line		
Full Load Amps	3.4/1.7	Breakdown Torque	3.18 LB-FT		
R.P.M.	1740	Pull-up Torque	2.29 LB-FT		
Hz	60 Phase	1	Locked-rotor Torque	4.26 LB-FT	
NEMA Design Code	N KVA Code	K	Starting Current	24.1 A	
Service Factor (S.F.)	1.35		No-load Current	1.69 A	
NEMA Nom. Eff.	72.4 Power Factor	85	Line-line Res. @ 25°C	1.7428 Ω A Ph 5.5858 Ω B Ph	
Rating - Duty	40C AMB-CONT		Temp. Rise @ Rated Load	35°C	
S.F. Amps	4.4/2.2		Temp. Rise @ S.F. Load	42°C	

Load Characteristics 115 V, 60 Hz, 0.33 HP

% of Rated Load	25	50	75	100	125	150	S.F.
Power Factor	62	72	81	85	87	89	88
Efficiency	32.1	64.5	69.3	73.5	76.7	73.7	75.5
Speed	1780.3	1770	1754.7	1739.9	1725.3	1703.3	1716
Line amperes	1.96	2.31	2.87	3.43	3.99	4.81	4.32

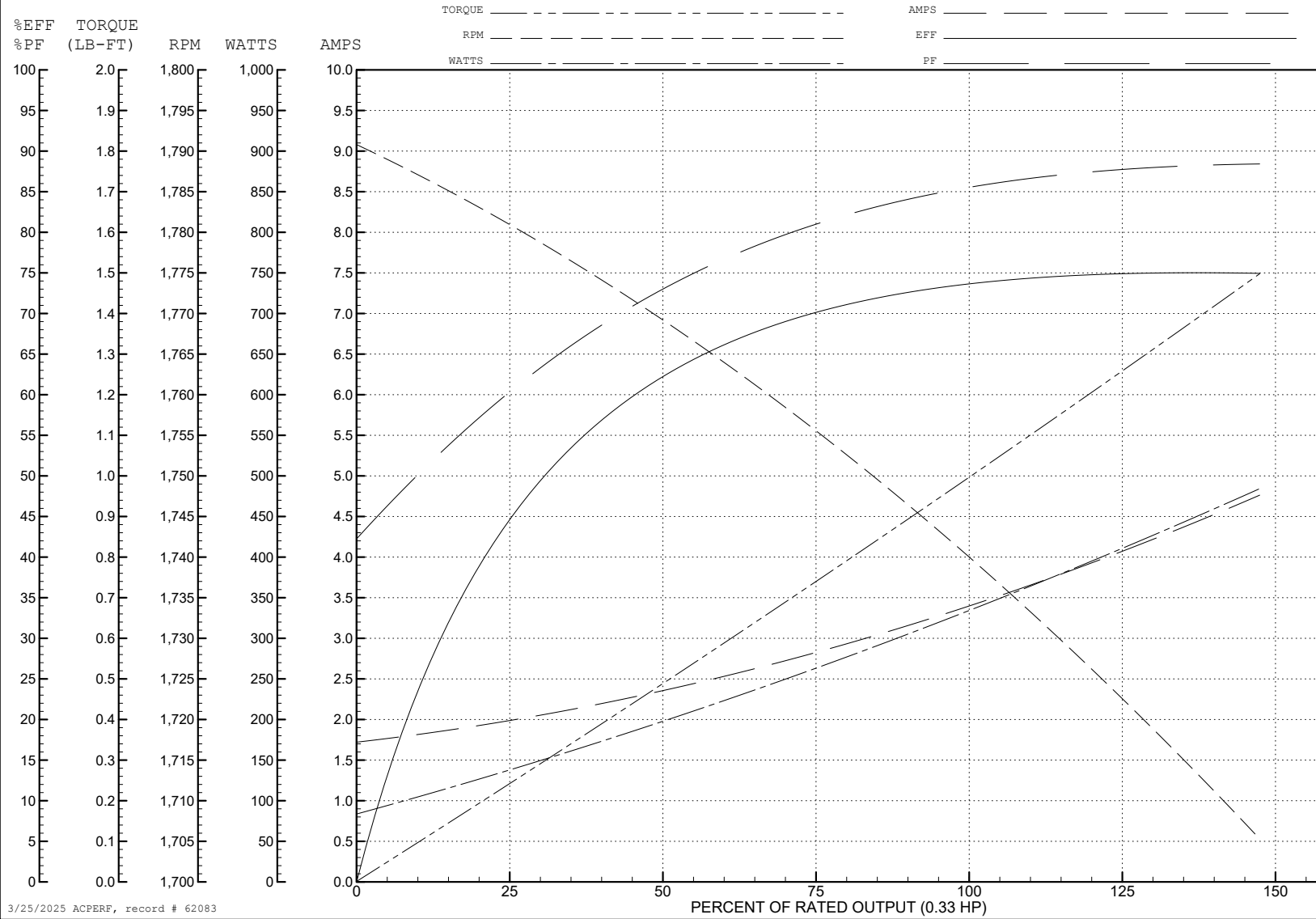
ABB Motors and Mechanical Inc.

WINDING # 34WGR216

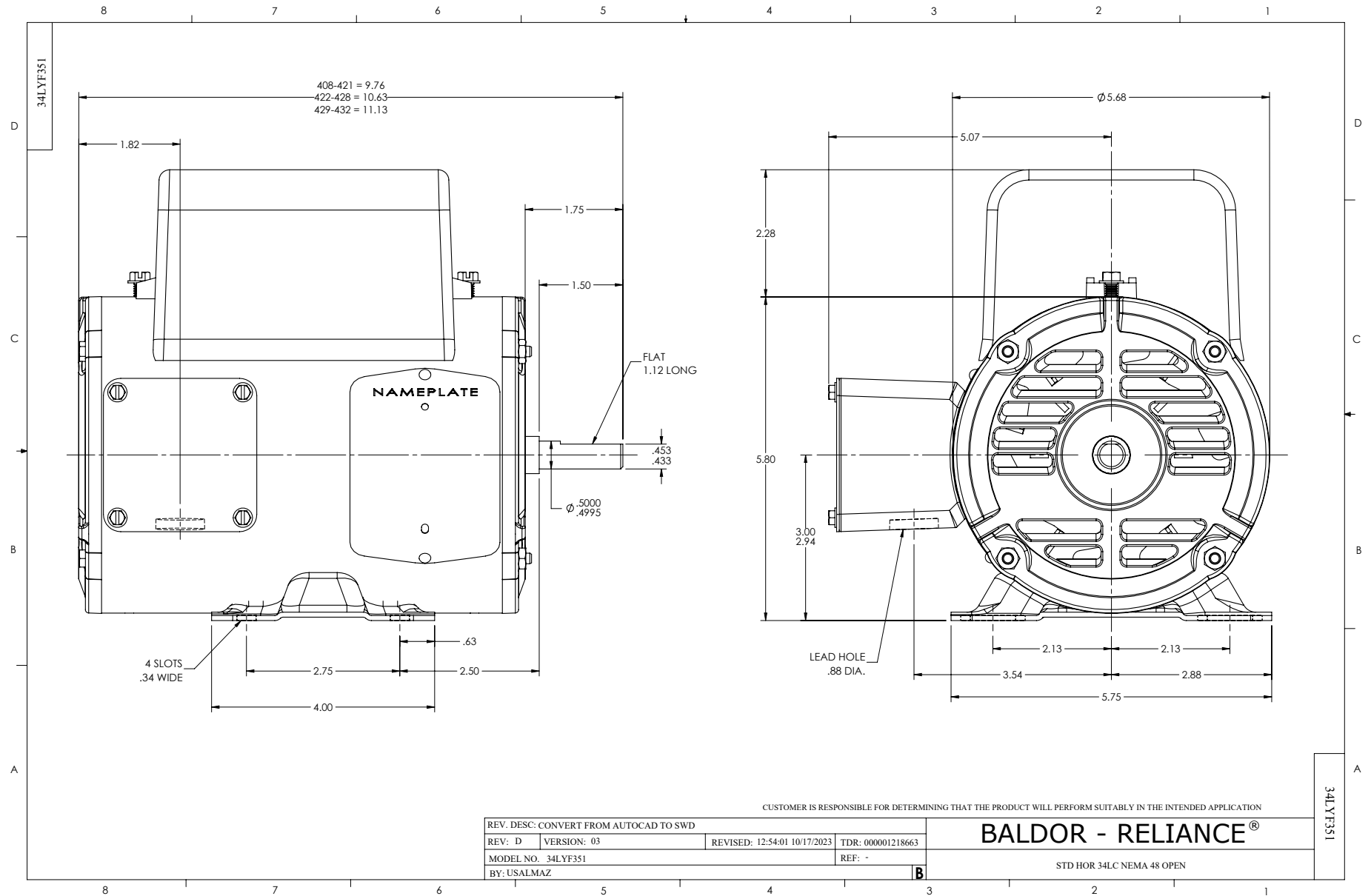
Typical performance - not guaranteed values.

0.33 HP 1 PH 60 HZ 1740 RPM 115 V 3418LC

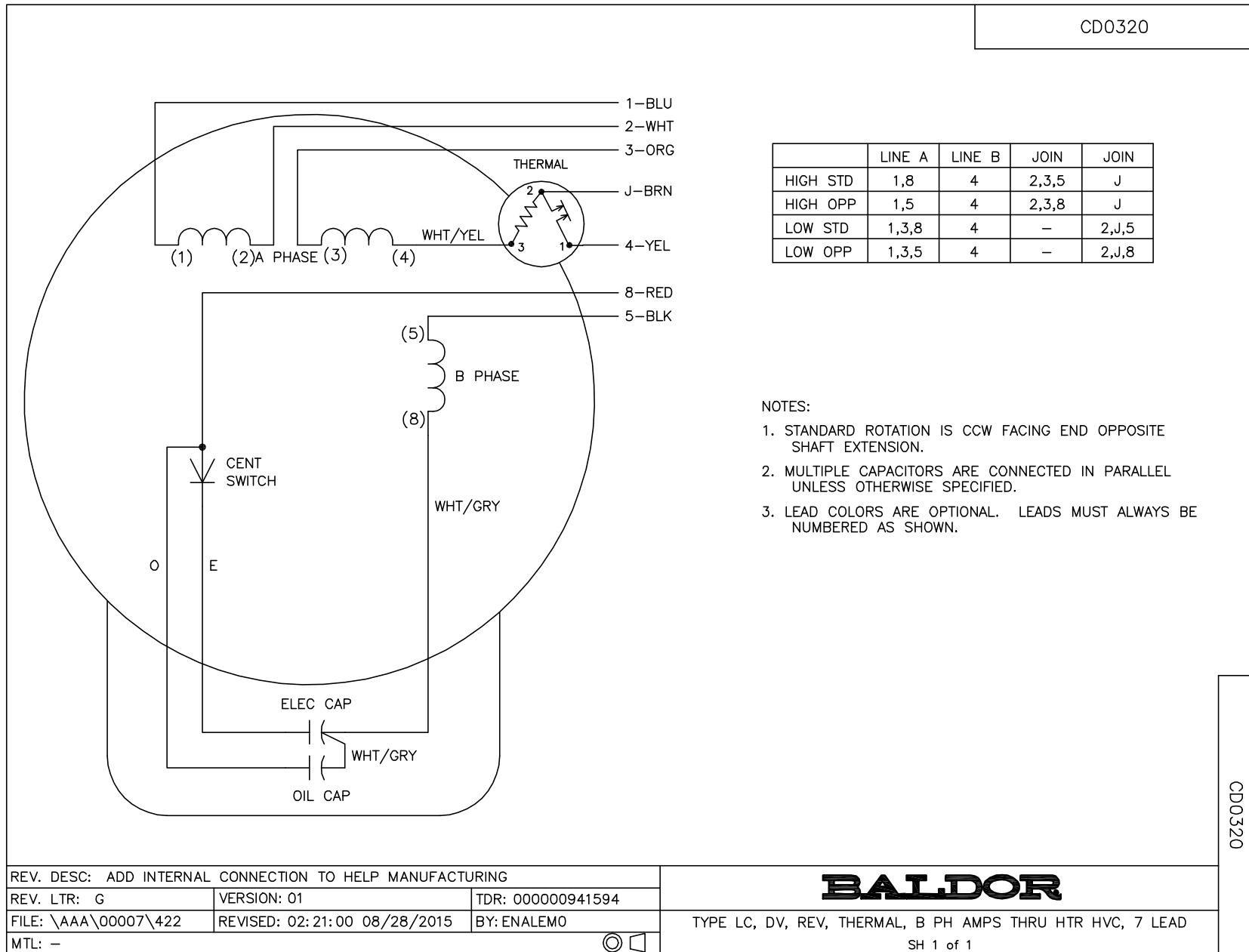
TORQUES (LB-FT): PO=3.18 PU=2.29 LR=4.26 LRA=24.1



3/25/2025 ACPERF, record # 62083



CD0320



	LINE A	LINE B	JOIN	JOIN
HIGH STD	1,8	4	2,3,5	J
HIGH OPP	1,5	4	2,3,8	J
LOW STD	1,3,8	4	-	2,J,5
LOW OPP	1,3,5	4	-	2,J,8

NOTES:

1. STANDARD ROTATION IS CCW FACING END OPPOSITE SHAFT EXTENSION.
2. MULTIPLE CAPACITORS ARE CONNECTED IN PARALLEL UNLESS OTHERWISE SPECIFIED.
3. LEAD COLORS ARE OPTIONAL. LEADS MUST ALWAYS BE NUMBERED AS SHOWN.

CD0320

REV. DESC: ADD INTERNAL CONNECTION TO HELP MANUFACTURING		
REV. LTR: G	VERSION: 01	TDR: 00000941594
FILE: \AAA\00007\422	REVISED: 02:21:00 08/28/2015	BY: ENALEMO
MTL: -		

BALDOR

TYPE LC, DV, REV, THERMAL, B PH AMPS THRU HTR HVC, 7 LEAD
SH 1 of 1