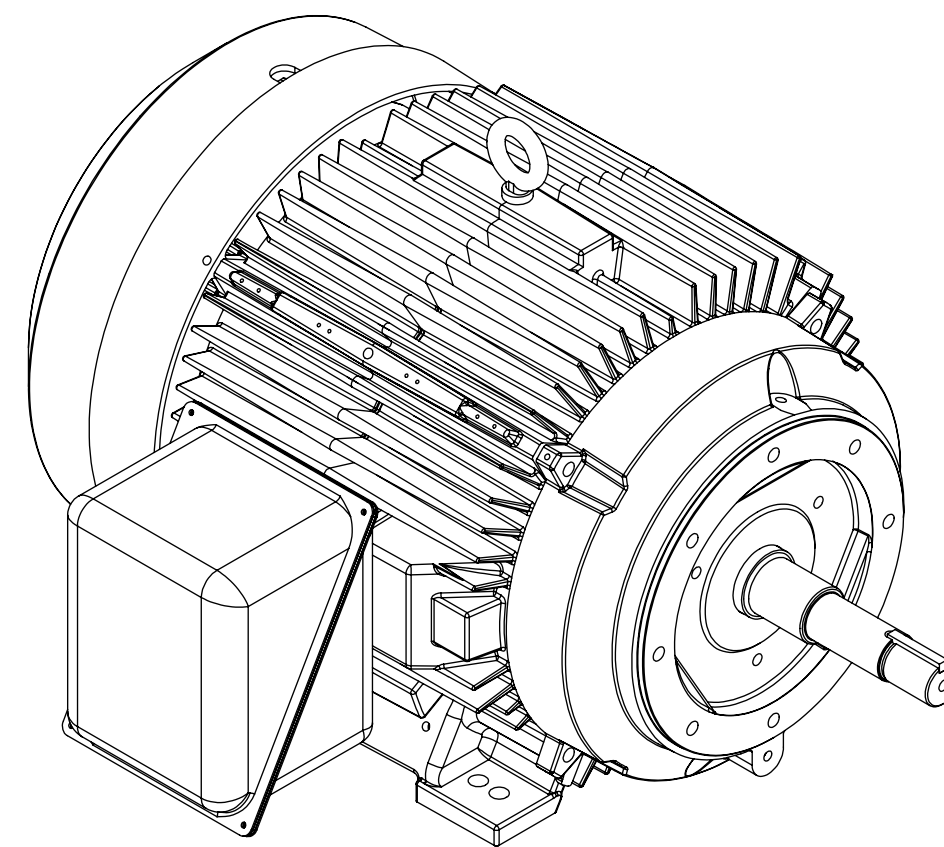
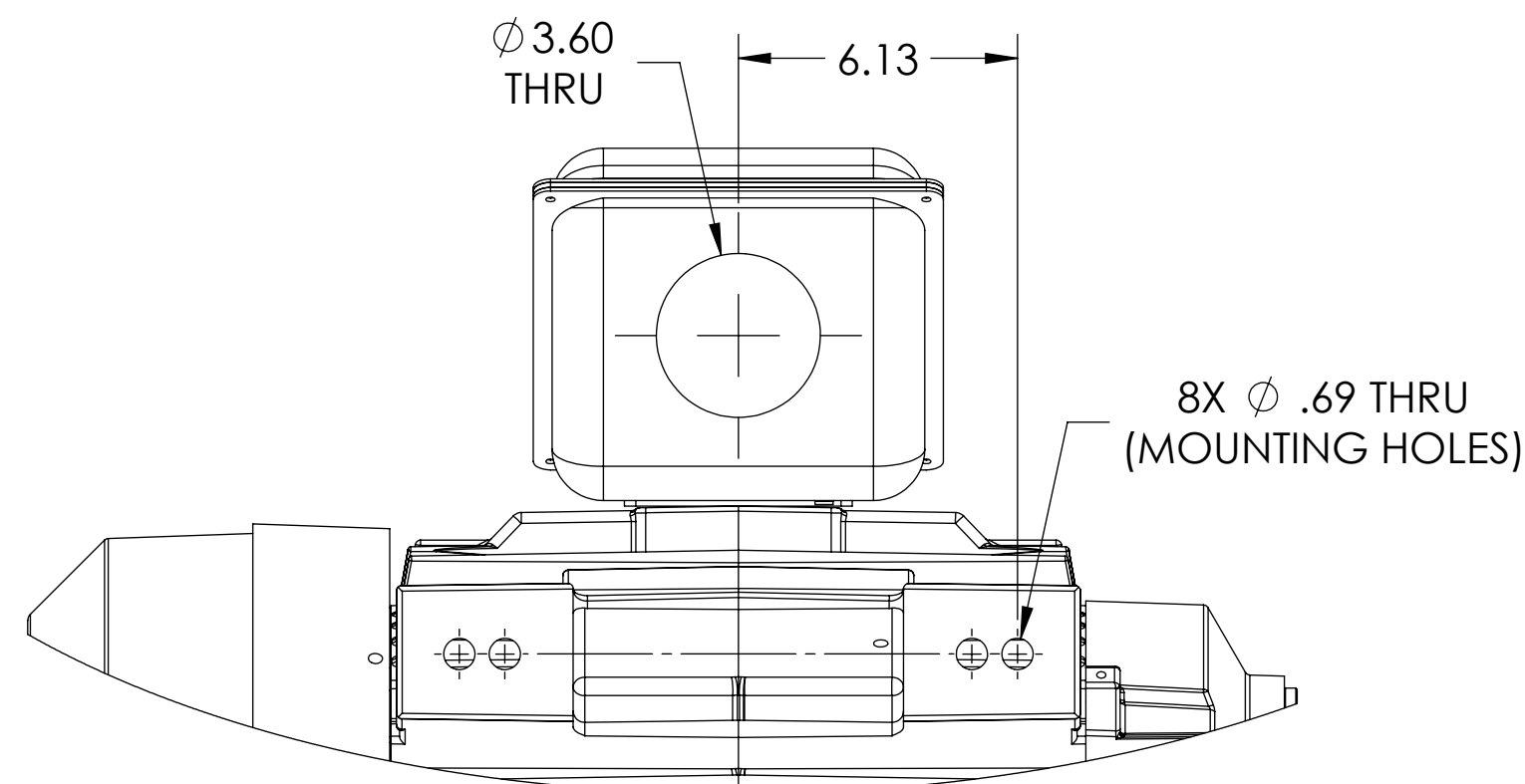
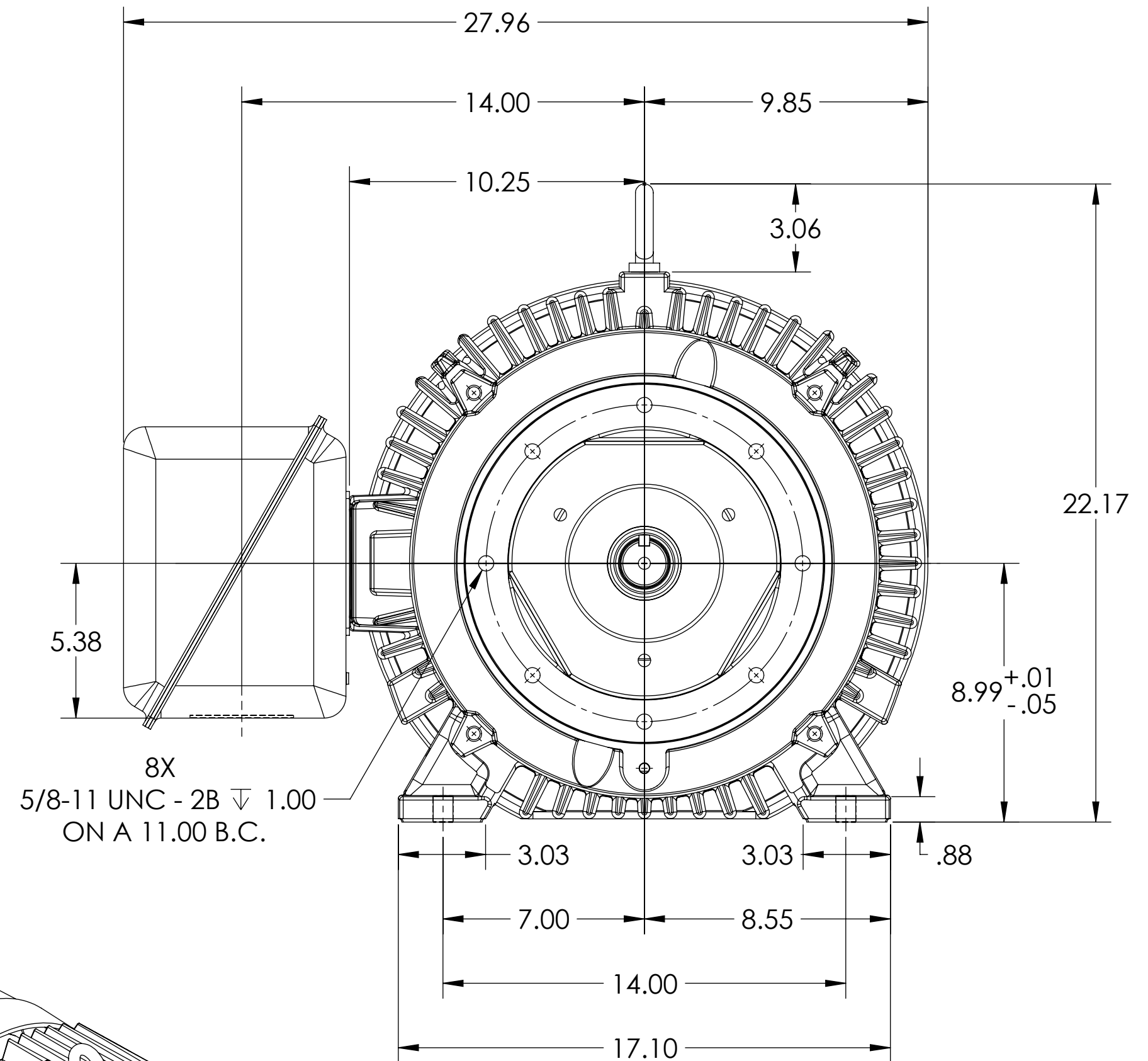
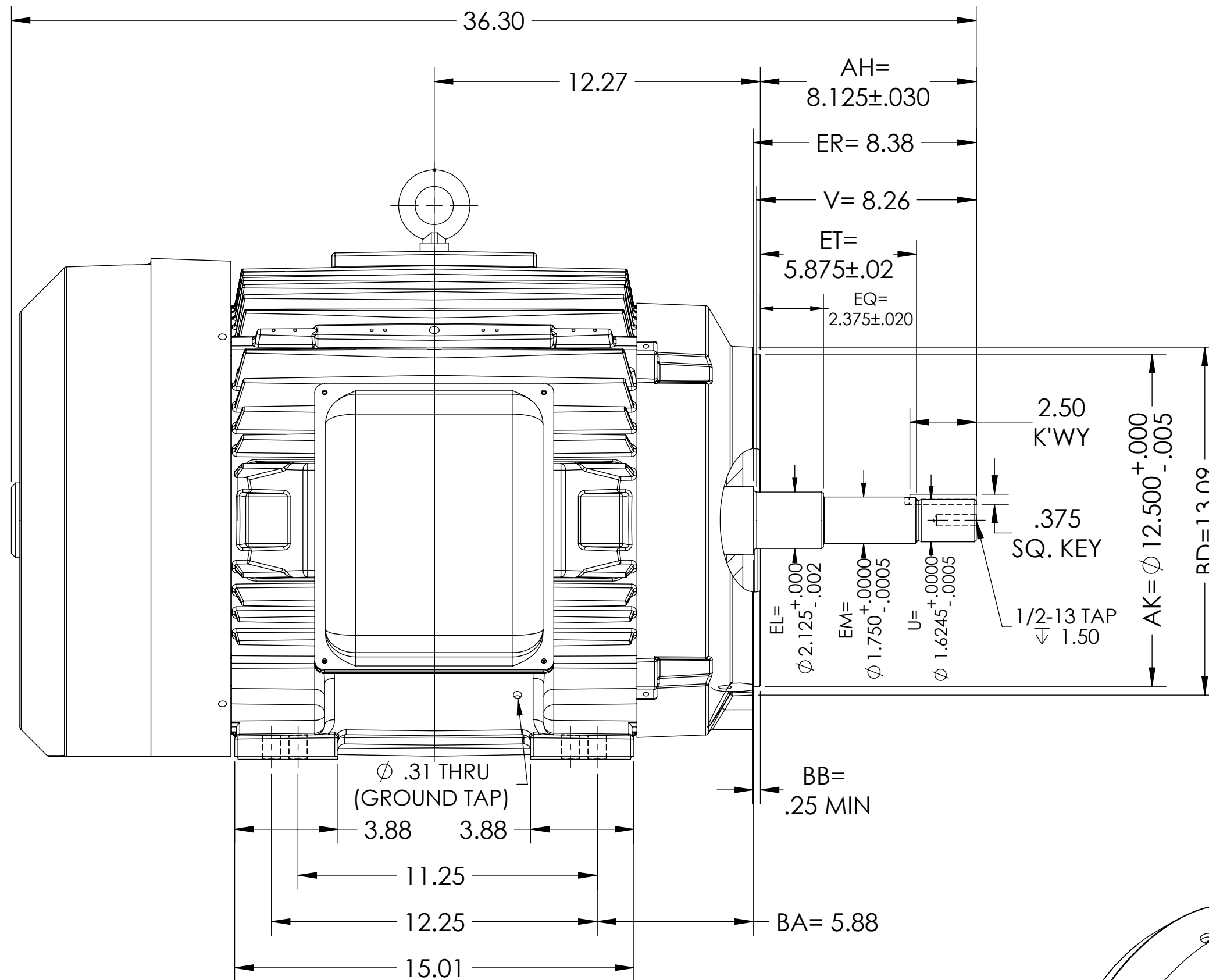


ENCLOSURE: TOTALLY ENCLOSED

MOUNTING: FOOT, F-1,C-FACE

E365JP/E364JP

COOLING: FAN COOLED

DUTY MASTER ALTERNATING CURRENT MOTORS
SQUIRREL-CAGE INDUCTION

DIMENSIONS ARE IN INCHES.
MOTOR WEIGHT = 801LBS $\pm 1.5\%$.
CUSTOMER IS RESPONSIBLE FOR DETERMINING THAT MOTOR PERFORMANCE IS SUITABLE IN THE APPLICATION.

REV. DESC: UPDATE DS QUALITY			
REV: C	VERSION: 03	REVISED: 10:06:04 03/01/2019	TDR: 000001100628
MODEL NO. 617431-552			
BY: USJEDIL			

BALDOR

E365/364JP TEFC FOOT F1 STEEL CONDUIT BOX/DE C-FACE BRACKET

CONDUIT BOX LOCATED ON OPPOSITE SIDE WHEN F-2.
IF MOUNTING CLEARANCE DETAILS ARE REQUIRED, CONSULT FACTORY.
MAX PERMISSIBLE SHAFT RUNOUT WHEN MEASURED AT END OF STANDARD SHAFT EXTENSION IS .003 T.I.R.