

**BALDOR • RELIANCE**

---

# Customer information packet

## EJPM4106T

20HP, 3520RPM, 3PH, 60HZ, 256JP, 0936M, TEFC, F

Class - None

Division - Not Applicable

## Specifications

|                                |                                                                |
|--------------------------------|----------------------------------------------------------------|
| Enclosure                      | TEFC                                                           |
| Frame                          | 256JP                                                          |
| Frame Material                 | Iron                                                           |
| Frequency                      | 60.00 Hz                                                       |
| Haz Area Class and Group       | None                                                           |
| Haz Area Division              | Not Applicable                                                 |
| Motor Letter Type              | Three Phase                                                    |
| Output @ Frequency             | 20.000 HP @ 60 HZ                                              |
| Phase                          | 3                                                              |
| Synchronous Speed @ Frequency  | 3600 RPM @ 60 HZ                                               |
| Voltage @ Frequency            | 230.0 V @ 60 HZ<br>460.0 V @ 60 HZ                             |
| Agency Approvals               | CSA<br>UR<br>NEMA PREMIUM<br>CSA EEV                           |
| Ambient Temperature            | 40 °C                                                          |
| Auxillary Box                  | No Auxillary Box                                               |
| Auxillary Box Lead Termination | None                                                           |
| Base Indicator                 | Rigid                                                          |
| Bearing Grease Type            | Polyrex EM (-20F +300F)                                        |
| Blower                         | None                                                           |
| Current @ Voltage              | 23.000 A @ 460.0 V<br>46.000 A @ 230.0 V<br>50.000 A @ 208.0 V |
| Design Code                    | A                                                              |
| Drip Cover                     | No Drip Cover                                                  |
| Duty Rating                    | CONT                                                           |
| Efficiency @ 100% Load         | 91.0 %                                                         |
| Electrically Isolated Bearing  | Not Electrically Isolated                                      |
| Feedback Device                | NO FEEDBACK                                                    |
| Heater Indicator               | No Heater                                                      |

## Part detail

|              |                                       |
|--------------|---------------------------------------|
| Revision     | G                                     |
| Type         | AC                                    |
| Mech. spec.  |                                       |
| Base         |                                       |
| Status       | PRD/A                                 |
| Elec. spec.  | M-09WG-Z601                           |
| Layout       | 09LY-001-182                          |
| Eff. date    | 03-19-2024                            |
| CD Diagram   | CD0005                                |
| Poles        | 02                                    |
| Leads        | 9#12 NA NA,0# NA NA,0# NA NA,0# NA NA |
| Proprietary  | False                                 |
| Created date | 02-25-2021                            |

|                             |                       |
|-----------------------------|-----------------------|
| High Voltage Full Load Amps | 23.0 a                |
| Insulation Class            | F                     |
| Inverter Code               | Inverter Ready        |
| KVA Code                    | H                     |
| Lifting Lugs                | Standard Lifting Lugs |
| Locked Bearing Indicator    | Locked Bearing        |
| Motor Lead Termination      | Flying Leads          |
| Motor Standards             | NEMA                  |
| Motor Type                  | 0936M                 |
| Mounting Arrangement        | F1                    |
| Number of Poles             | 2                     |
| Overall Length              | 28.24 IN              |
| Power Factor                | 89                    |
| Product Family              | General Purpose       |
| Pulley Face Code            | C-Face                |
| Rodent Screen               | None                  |
| Service Factor              | 1.15                  |
| Shaft Diameter              | 1.250 IN              |
| Shaft Ground Indicator      | No Shaft Grounding    |
| Shaft Rotation              | Reversible            |
| Speed                       | 3520 rpm              |
| Speed Code                  | Single Speed          |
| Starting Method             | Direct on line        |
| Thermal Device - Bearing    | None                  |
| Thermal Device - Winding    | None                  |
| Vibration Sensor Indicator  | No Vibration Sensor   |
| Winding Thermal 1           | None                  |
| Winding Thermal 2           | None                  |

**Nameplate**

**NP3441LUA**

|                                  |                           |             |           |            |   |              |       |
|----------------------------------|---------------------------|-------------|-----------|------------|---|--------------|-------|
| <b>CAT.NO.</b>                   | EJPM4106T                 |             |           |            |   |              |       |
| <b>SPEC</b>                      | 09-0000-2964              |             |           |            |   |              |       |
| <b>HP</b>                        | 20                        |             |           |            |   |              |       |
| <b>VOLTS</b>                     | 230/460                   |             |           |            |   |              |       |
| <b>AMPS</b>                      | 46/23                     |             |           |            |   |              |       |
| <b>RPM</b>                       | 3520                      |             |           |            |   |              |       |
| <b>FRAME</b>                     | 256JP                     |             | <b>HZ</b> | 60         |   | <b>PH</b>    | 3     |
| <b>SF</b>                        | 1.15                      | <b>CODE</b> | H         | <b>DES</b> | A | <b>CLASS</b> | F     |
| <b>NEMA NOM. EFF</b>             | 91                        | <b>PF</b>   | 89        |            |   |              |       |
| <b>RATING</b>                    | 40C AMB-CONT              |             |           |            |   |              |       |
| <b>CC</b>                        | 010A                      |             |           |            |   |              |       |
| <b>ENCL</b>                      | TEFC                      | <b>SER</b>  |           |            |   |              |       |
| <b>DE</b>                        | 6309                      | <b>ODE</b>  | 6208      |            |   |              |       |
| <b>VPWM INVERTER READY</b>       | SFA 52/26                 |             |           |            |   |              |       |
| <b>CT6-60H(10:1)VT3-60H(20:1</b> | 50HZ 20HP 190/380V 56/28A |             |           |            |   |              | SF1.0 |

**AC Induction Motor Performance Data**

Record # 31396

Typical performance - not guaranteed values

| Winding: 09WGZ601-R001 |                 | Type: 0936M               |                                                  | Enclosure: TEFC |  |  |
|------------------------|-----------------|---------------------------|--------------------------------------------------|-----------------|--|--|
| <b>Nameplate Data</b>  |                 |                           | <b>460 V, 60 Hz:<br/>High Voltage Connection</b> |                 |  |  |
| Rated Output (HP)      | 20              | Full Load Torque          | 29.6 LB-FT                                       |                 |  |  |
| Volts                  | 230/460         | Start Configuration       | direct on line                                   |                 |  |  |
| Full Load Amps         | 46/23           | Breakdown Torque          | 111 LB-FT                                        |                 |  |  |
| R.P.M.                 | 3520            | Pull-up Torque            | 39.1 LB-FT                                       |                 |  |  |
| Hz                     | 60 Phase        | 3                         | Locked-rotor Torque                              | 49.6 LB-FT      |  |  |
| NEMA Design Code       | A KVA Code      | H                         | Starting Current                                 | 161 A           |  |  |
| Service Factor (S.F.)  | 1.15            | No-load Current           | 7.17 A                                           |                 |  |  |
| NEMA Nom. Eff.         | 91 Power Factor | 89                        | Line-line Res. @ 25°C                            | 0.47592 Ω       |  |  |
| Rating - Duty          | 40C AMB-CONT    | Temp. Rise @ Rated Load   | 76°C                                             |                 |  |  |
| S.F. Amps              |                 | Temp. Rise @ S.F. Load    | 95°C                                             |                 |  |  |
|                        |                 | Locked-rotor Power Factor | 29                                               |                 |  |  |
|                        |                 | Rotor inertia             | 0.92 lb-ft <sup>2</sup>                          |                 |  |  |

**Load Characteristics 460 V, 60 Hz, 20 HP**

| % of Rated Load | 25     | 50     | 75     | 100    | 125    | 150    | S.F. |
|-----------------|--------|--------|--------|--------|--------|--------|------|
| Power Factor    | 58     | 78     | 86     | 89     | 90     | 90     | 90   |
| Efficiency      | 88.9   | 92.2   | 92.4   | 91.7   | 90.7   | 89.2   | 91.1 |
| Speed           | 3579.6 | 3561.5 | 3541.3 | 3519.5 | 3495.4 | 3467.8 | 3505 |
| Line amperes    | 9      | 13     | 17.7   | 22.9   | 28.6   | 35     | 26.3 |

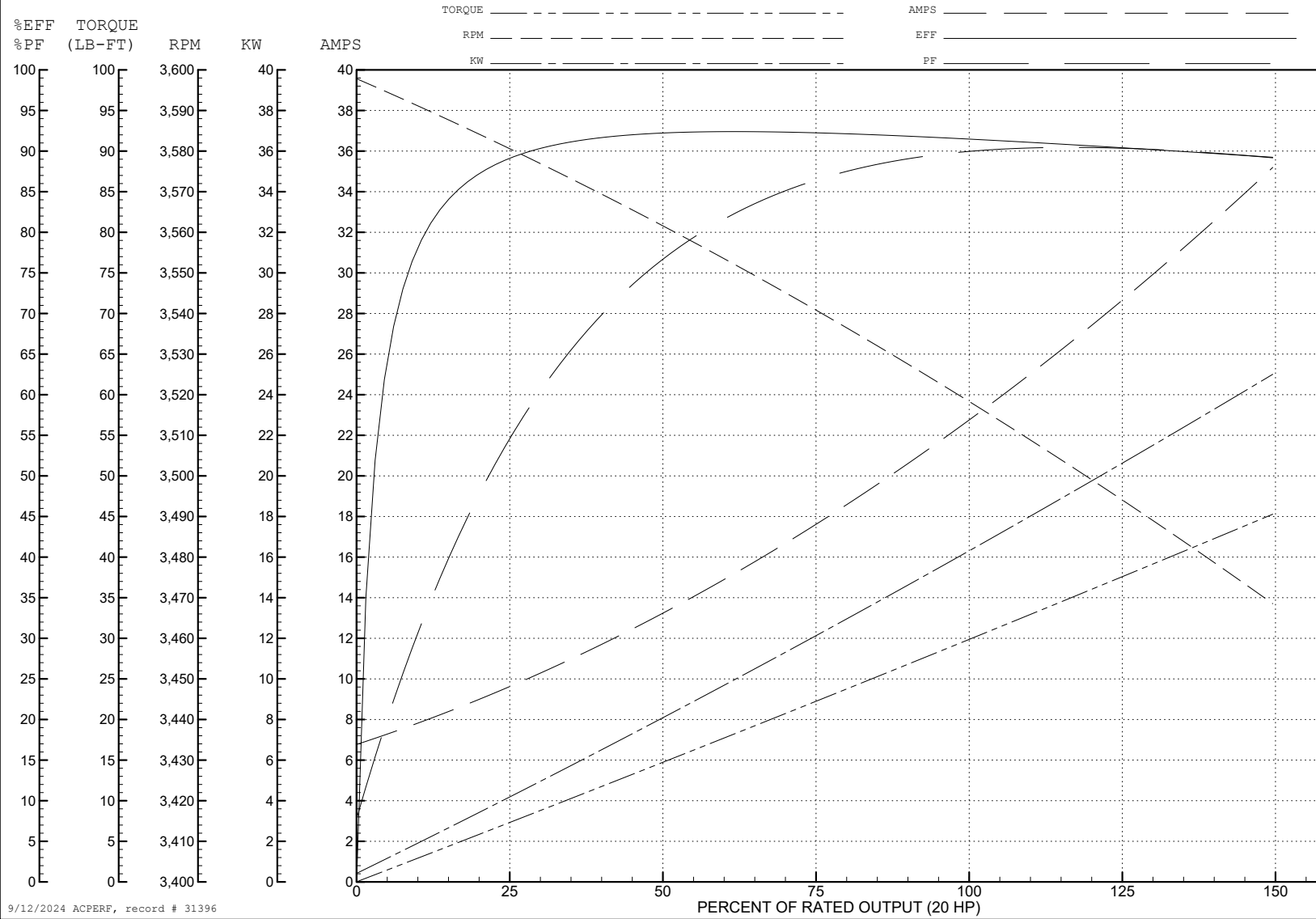
ABB Motors and Mechanical Inc.

WINDING # 09WGZ601

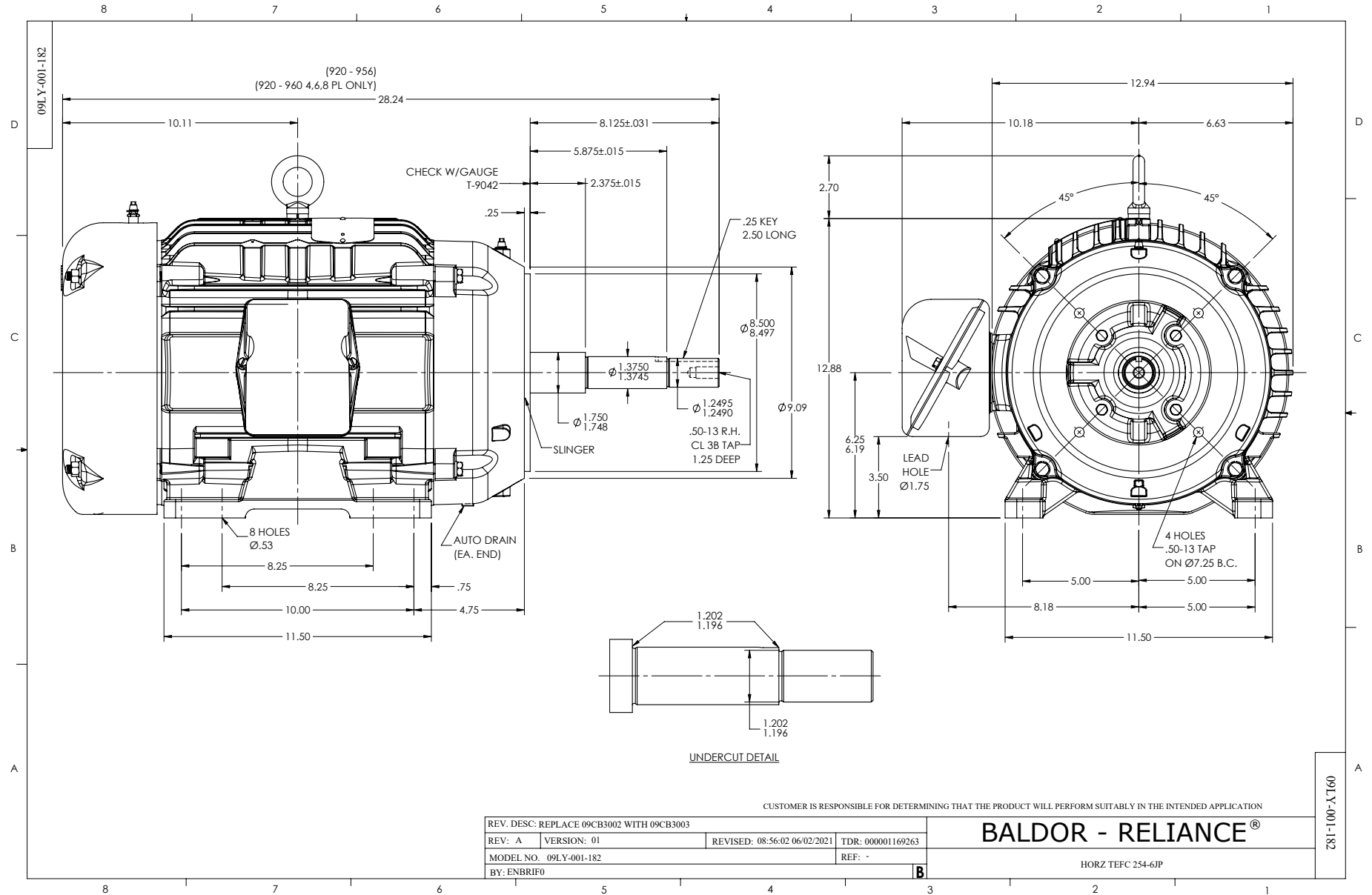
Typical performance - not guaranteed values.

20 HP 3 PH 60 HZ 3520 RPM 460 V 0936M

TORQUES (LB-FT): PO=111 PU=39.1 LR=49.6 LRA=161



9/12/2024 ACPERF, record # 31396



CD0005



LOW VOLTAGE (2Y)



LINE

HIGH VOLTAGE (1Y)



LINE

NOTES:

1. INTERCHANGE ANY TWO LINE LEADS TO REVERSE ROTATION.
2. OPTIONAL THERMOSTATS ARE PROVIDED WHEN SPECIFIED.
3. ACTUAL NUMBER OF INTERNAL PARALLEL CIRCUITS MAY BE A MULTIPLE OF THOSE SHOWN ABOVE.
4. LEAD COLORS ARE OPTIONAL. LEADS MUST ALWAYS BE NUMBERED AS SHOWN.

CD0005

|                                           |         |                         |              |
|-------------------------------------------|---------|-------------------------|--------------|
| REV. DESC: REVISE TO SHOW OPTIONAL COLORS |         |                         |              |
| REV. LTR: E                               | BY: JLP | REVISED: 01/19/99 10:15 | TDR: 0171435 |
| S00000                                    |         | FILE: AAA00005140       | MDL: -       |
|                                           |         | MTL: -                  |              |

BALDOR ELECTRIC Co.

3PH, DV, 9 LEADS