

BALDOR® • RELIANCE™

Customer information packet

EJPM2542T

50HP, 3550RPM, 3PH, 60HZ, 324JP, 4248M, OPSB, F

Specifications

Enclosure	OPSB
Frame	324JP
Frame Material	Steel
Frequency	60.00 Hz
Output @ Frequency	50.000 HP @ 60 HZ
Phase	3
Synchronous Speed @ Frequency	3600 RPM @ 60 HZ
Voltage @ Frequency	230.0 V @ 60 HZ 460.0 V @ 60 HZ
Agency Approvals	CSA CSA EEV NEMA PREMIUM UR
Ambient Temperature	40 °C
Auxillary Box	No Auxillary Box
Auxillary Box Lead Termination	None
Base Indicator	Rigid
Bearing Grease Type	Polyrex EM (-20F +300F)
Blower	None
Current @ Voltage	116.000 A @ 230.0 V 58.000 A @ 460.0 V
Design Code	A
Drip Cover	No Drip Cover
Duty Rating	CONT
Efficiency @ 100% Load	93.0 %
Electrically Isolated Bearing	Not Electrically Isolated
Feedback Device	NO FEEDBACK
Heater Indicator	No Heater
High Voltage Full Load Amps	58.0 a
Insulation Class	F
Inverter Code	Inverter Ready
KVA Code	H

Part detail

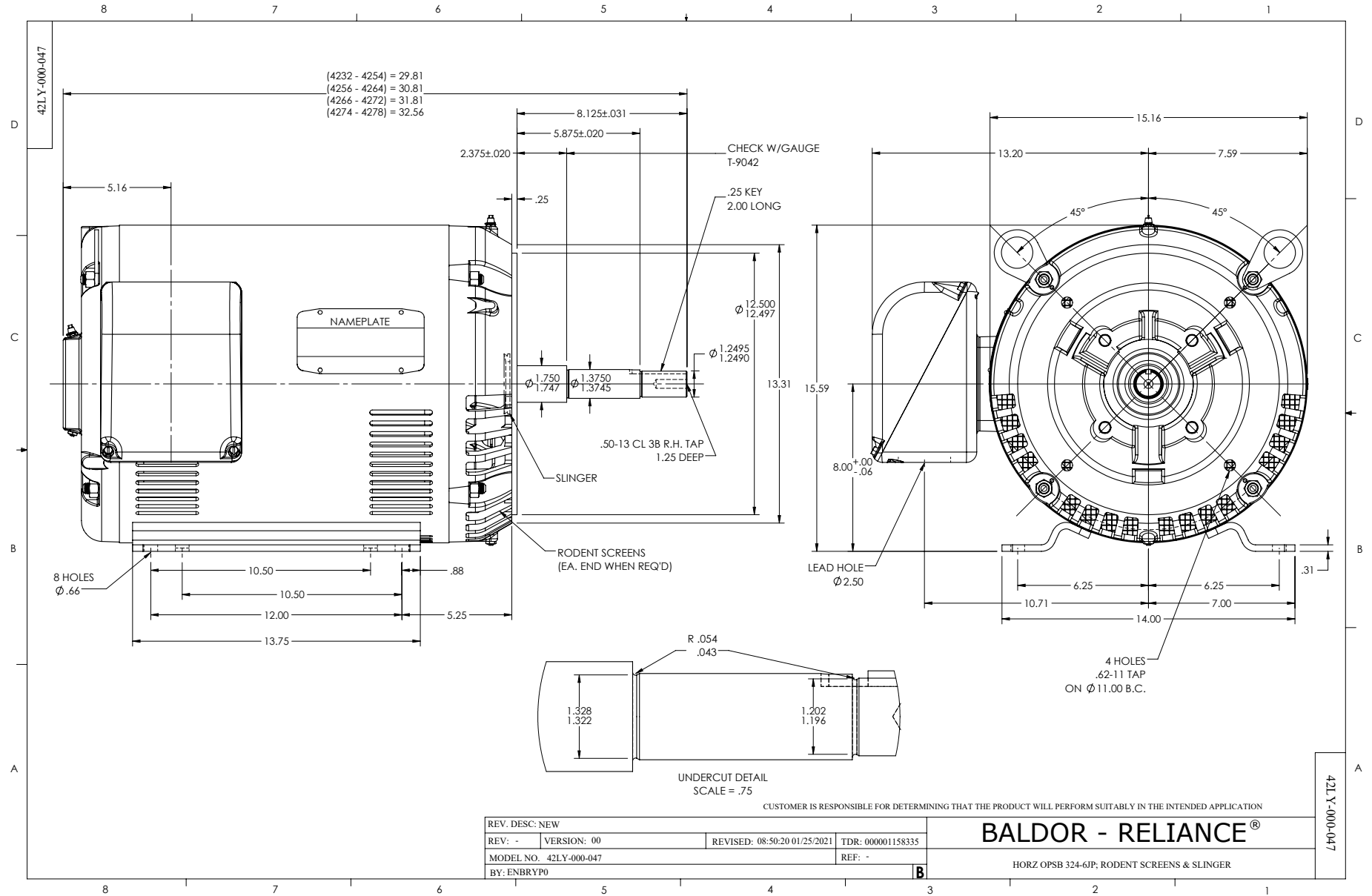
Revision	C
Type	AC
Mech. spec.	
Base	
Status	PRD/A
Elec. spec.	42WGW284
Layout	42LY-000-047
Eff. date	11-29-2023
CD Diagram	CD0180
Poles	02
Leads	9#6
Proprietary	False
Created date	01-15-2021

Lifting Lugs	Standard Lifting Lugs
Locked Bearing Indicator	Locked Bearing
Motor Lead Termination	Flying Leads
Motor Standards	NEMA
Motor Type	4248M
Mounting Arrangement	F1
Number of Poles	2
Overall Length	29.81 IN
Power Factor	87
Product Family	General Purpose
Pulley Face Code	C-Face
Rodent Screen	Included
Service Factor	1.15
Shaft Diameter	1.250 IN
Shaft Ground Indicator	No Shaft Grounding
Shaft Rotation	Reversible
Speed	3550 rpm
Speed Code	Single Speed
Starting Method	Full Voltage
Thermal Device - Bearing	None
Thermal Device - Winding	None
Vibration Sensor Indicator	No Vibration Sensor
Winding Thermal 1	None
Winding Thermal 2	None

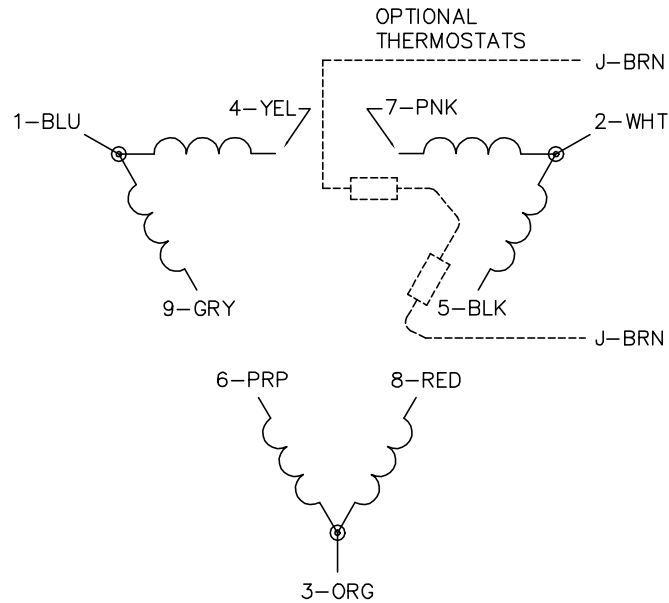
Nameplate

NP2138LUA

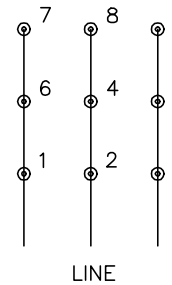
CAT.NO.	EJPM2542T	P/N		ENCLOSURE	OPSB
SPEC.	42-0000-0106	CC	010A	FRAME	324JP
HP	50	CLASS	F	HZ	60
RPM	3550	PH	3	DES	A
VOLT	230/460	KVA-CODE	H	ODE BRG	6311
AMP	116/58	DE BRG			6312
RATING	40C AMB-CONT	GREASE	POLYREX EM		
NEMA-NOM-EFF	93	PF	87	SER.F.	1.15
HTR-VOLTS	50HZ 50HP 190/380V 138/69A	S.F.	1.0		
HTR-AMPS					



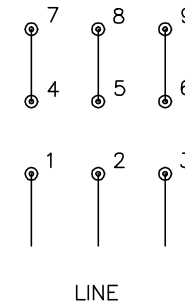
CD0180



LOW VOLTAGE
(2D)



HIGH VOLTAGE
(1D)



NOTES:

1. INTERCHANGE ANY TWO LINE LEADS TO REVERSE ROTATION.
2. OPTIONAL THERMOSTATS ARE PROVIDED WHEN SPECIFIED.
3. ACTUAL NUMBER OF INTERNAL PARALLEL CIRCUITS MAY BE A MULTIPLE OF THOSE SHOWN ABOVE.
4. LEAD COLORS ARE OPTIONAL. LEADS MUST ALWAYS BE NUMBERED AS SHOWN.

CD0180

REV. DESC: ADD CLASS CONN00000007		
REV. LTR: D	VERSION: 01	TDR: 000001099922
FILE: \AAA\00005\148	REVISED: 10: 25: 29 02/19/2019	BY: ENBRIRO
MTL: -	© □	

BALDOR - RELIANCE®

3PH, DV, 9 LEADS, DELTA CONNECTION

SH 1 of 1