



Customer information packet

EJMM3714T-G

10HP, 1768RPM, 3PH, 60HZ, 215JM, 3750M, TEFC, F

Class - None

Division - Not Applicable

Specifications

Enclosure	TEFC
Frame	215JM
Frame Material	Steel
Frequency	60.00 Hz
Haz Area Class and Group	None
Haz Area Division	Not Applicable
Motor Letter Type	Three Phase
Output @ Frequency	10.000 HP @ 60 HZ
Phase	3
Synchronous Speed @ Frequency	1800 RPM @ 60 HZ
Voltage @ Frequency	230.0 V @ 60 HZ 460.0 V @ 60 HZ
Agency Approvals	CURUSEEV NEMA PREMIUM
Ambient Temperature	40 °C
Auxiliary Box	NO AUXILLARY BOX
Auxiliary Box Lead Termination	None
Base Indicator	Rigid
Bearing Grease Type	Polyrex EM (-20F +300F)
Blower	None
Current @ Voltage	12.400 A @ 460.0 V 24.800 A @ 230.0 V 27.000 A @ 208.0 V
Design Code	A
Drip Cover	No Drip Cover
Duty Rating	CONT
Efficiency @ 100% Load	91.7 %
Electrically Isolated Bearing	Not Electrically Isolated
Feedback Device	NO FEEDBACK
Front Shaft Indicator	None
Heater Indicator	No Heater
High Voltage Full Load Amps	12.4 a

Part detail

Revision	-
Type	AC
Mech. spec.	37K496
Base	
Status	PRD/A
Elec. spec.	37WGZ711
Layout	37LYK496
Eff. date	11-24-2025
CD Diagram	CD0005
Poles	04
Leads	9#14
Proprietary	False
Created date	11-07-2025

Insulation Class	H
Inverter Code	Inverter Ready
KVA Code	K
Lifting Lugs	Standard Lifting Lugs
Locked Bearing Indicator	Locked Bearing
Motor Lead Quantity/Wire Size	9 @ 14 AWG
Motor Lead Termination	Flying Leads
Motor Standards	NEMA
Motor Type	3750M
Mounting Arrangement	F1
Number of Poles	4
Overall Length	21.63 IN
Power Factor	85
Product Family	General Purpose
Pulley End Bearing Type	Ball
Pulley Face Code	C-Face
Pulley Shaft Indicator	Tapped & Key
Rodent Screen	None
Service Factor	1.15
Shaft Diameter	0.875 IN
Shaft Ground Indicator	Shaft Grounding
Shaft Rotation	Reversible
Shaft Slinger Indicator	Shaft Slinger
Speed	1768 rpm
Speed Code	Single Speed
Starting Method	Direct on line
Thermal Device - Bearing	None
Thermal Device - Winding	None
Vibration Sensor Indicator	No Vibration Sensor
Winding Thermal 1	None
Winding Thermal 2	None

Nameplate

NP3441LUA

CAT.NO.	EJMM3714T-G						
SPEC	37K496Z711						
HP	10						
VOLTS	230/460						
AMPS	24.8/12.4						
RPM	1768						
FRAME	215JM	HZ	60	PH	3		
SF	1.15	CODE	K	DES	A	CLASS	H
NEMA NOM. EFF	91.7	PF	85				
RATING	40C AMB-CONT						
CC	010A						
ENCL	TEFC	SER					
DE	6309	ODE	6206				
VPWM INVERTER READY	SFA 28.2/14.1						
CT6-60H(10:1)VT3-60H(20:1)	50HZ 10HP 190/380V 29.8/14.9A						

AC Induction Motor Performance Data

Record # 115760

Typical performance - not guaranteed values

Winding: 37WGZ711-R001		Type: 3750M		Enclosure: TEFC	
Nameplate Data			460 V, 60 Hz: High Voltage Connection		
Rated Output (HP)		10	Full Load Torque		29.79 LB-FT
Volts		230/460	Start Configuration		direct on line
Full Load Amps		24.8/12.4	Breakdown Torque		93.4 LB-FT
R.P.M.		1768	Pull-up Torque		44.7 LB-FT
Hz	60 Phase		Locked-rotor Torque		55.5 LB-FT
NEMA Design Code	A KVA Code		Starting Current		90.5 A
Service Factor (S.F.)		1.15	No-load Current		5.11 A
NEMA Nom. Eff.	91.7 Power Factor		Line-line Res. @ 25°C		1.1801 Ω
Rating - Duty		40C AMB-CONT	Temp. Rise @ Rated Load		77°C
S.F. Amps		28.2/14.1	Temp. Rise @ S.F. Load		108°C
			Locked-rotor Power Factor		37.2

Load Characteristics 460 V, 60 Hz, 10 HP

% of Rated Load	25	50	75	100	125	150	S.F.
Power Factor	45	68	78	82	85	85	84
Efficiency	89.9	92.6	92.6	91.8	90.5	88.9	91
Speed	1792.4	1785	1776.3	1767.2	1756.7	1745.2	1756
Line amperes	5.83	7.54	9.79	12.4	15.3	18.6	14.2

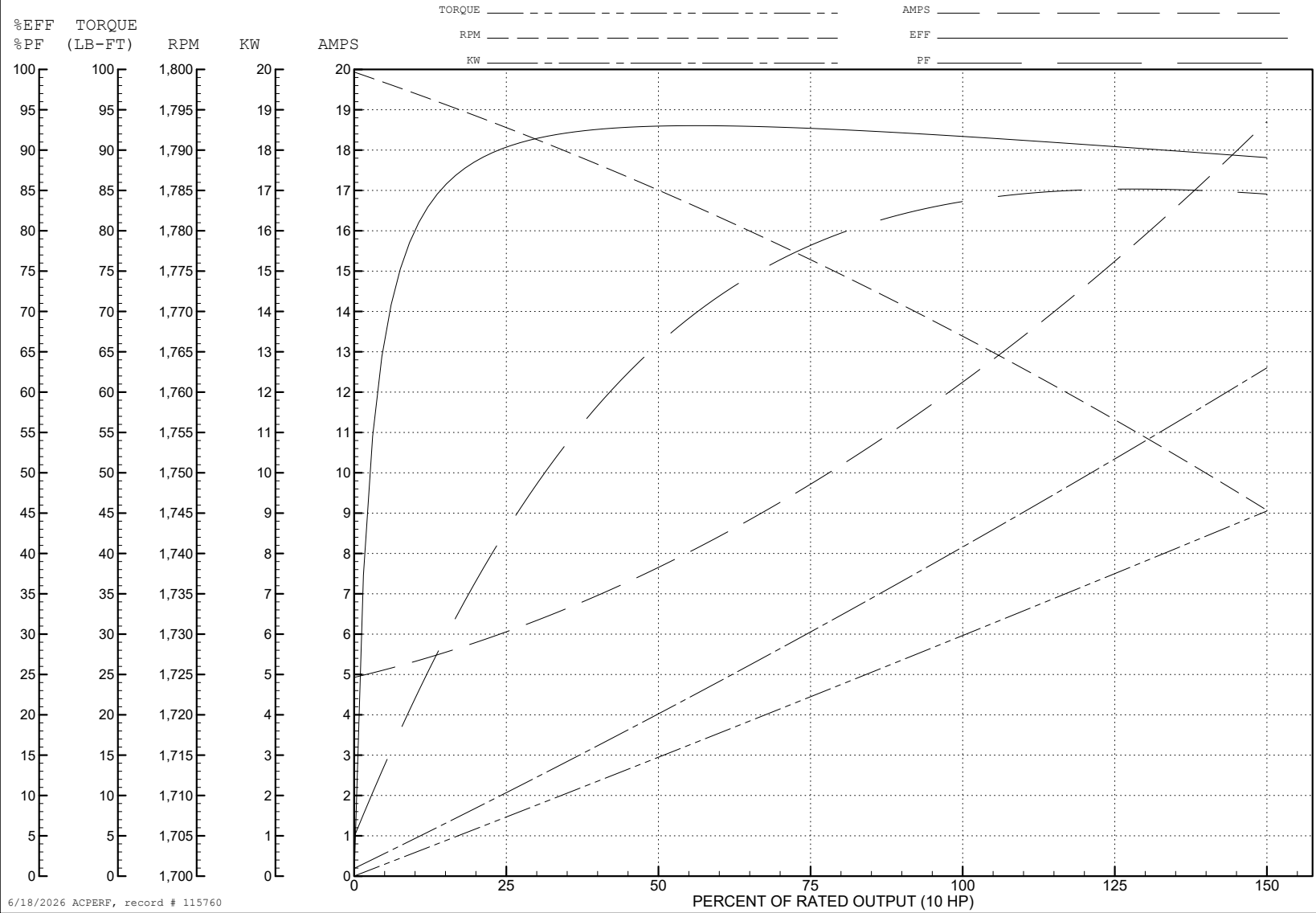
ABB Motors and Mechanical Inc.

WINDING # 37WGZ711

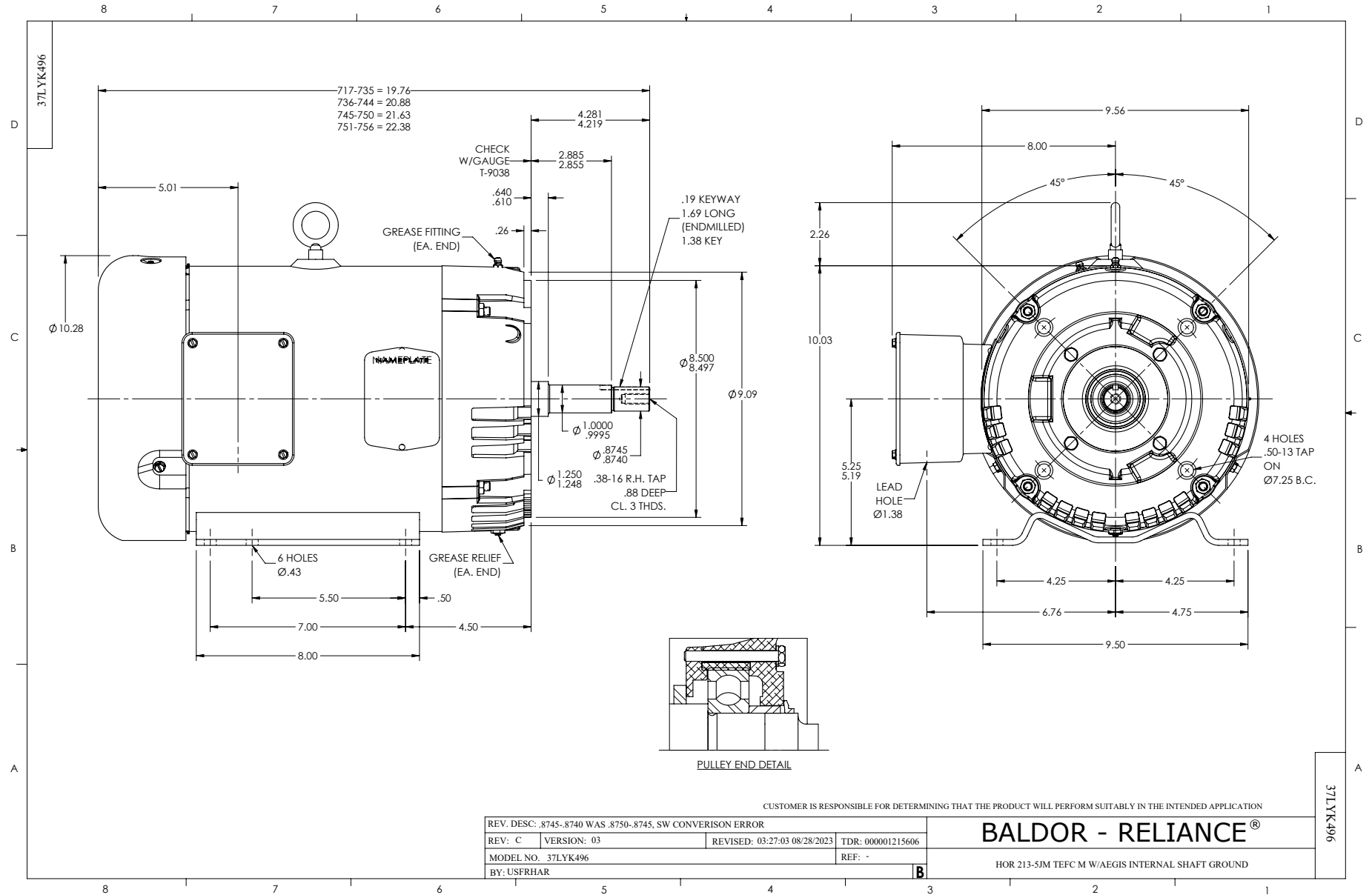
Typical performance - not guaranteed values.

10 HP 3 PH 60 HZ 1768 RPM 460 V 3750M

TORQUES (LB-FT): PO=93.4 PU=44.7 LR=55.5 LRA=90.5



6/18/2026 ACPERF, record # 115760



CD0005



LOW VOLTAGE
(2Y)



LINE

HIGH VOLTAGE
(1Y)



LINE

NOTES:

1. INTERCHANGE ANY TWO LINE LEADS TO REVERSE ROTATION.
2. OPTIONAL THERMOSTATS ARE PROVIDED WHEN SPECIFIED.
3. ACTUAL NUMBER OF INTERNAL PARALLEL CIRCUITS MAY BE A MULTIPLE OF THOSE SHOWN ABOVE.
4. LEAD COLORS ARE OPTIONAL. LEADS MUST ALWAYS BE NUMBERED AS SHOWN.

CD0005

REV. DESC: REVISE TO SHOW OPTIONAL COLORS			
REV. LTR: E	BY: JLP	REVISED: 01/19/99 10:15	TDR: 0171435
S00000		FILE: AAA00005140	MDL: -
		MTL: -	

BALDOR ELECTRIC Co.

3PH, DV, 9 LEADS