

**BALDOR • RELIANCE**

---

# Customer information packet

## EJMM3550T

1.5HP, 3500RPM, 3PH, 60HZ, 3520M, N

Class - None

Division - Not Applicable

## Specifications

Enclosure	TEFC
Frame	143JM
Frame Material	Steel
Frequency	60.00 Hz
Haz Area Class and Group	None
Haz Area Division	Not Applicable
Motor Letter Type	Three Phase
Output @ Frequency	1.500 HP @ 60 HZ
Phase	3
Synchronous Speed @ Frequency	3600 RPM @ 60 HZ
Voltage @ Frequency	460.0 V @ 60 HZ 230.0 V @ 60 HZ
Agency Approvals	CSA CSA EEV UR
Ambient Temperature	40 °C
Auxillary Box	No Auxillary Box
Auxillary Box Lead Termination	None
Base Indicator	Rigid
Bearing Grease Type	Polyrex EM (-20F +300F)
Blower	None
Current @ Voltage	3.800 A @ 230.0 V 4.000 A @ 208.0 V 1.900 A @ 460.0 V
Design Code	B
Drip Cover	No Drip Cover
Duty Rating	CONT
Efficiency @ 100% Load	84.0 %
Electrically Isolated Bearing	Not Electrically Isolated
Feedback Device	NO FEEDBACK
Front Face Code	Standard
Front Shaft Indicator	None

## Part detail

Revision	T
Type	AC
Mech. spec.	35T921
Base	
Status	PRD/A
Elec. spec.	35WGM760
Layout	35LYT921
Eff. date	02-07-2025
CD Diagram	CD0005
Poles	02
Leads	9#18
Proprietary	False
Created date	05-24-2010

Heater Indicator	No Heater
High Voltage Full Load Amps	1.9 a
Insulation Class	F
Inverter Code	Not Inverter
KVA Code	L
Lifting Lugs	No Lifting Lugs
Locked Bearing Indicator	Locked Bearing
Motor Lead Exit	Ko Box
Motor Lead Quantity/Wire Size	9 @ 18 AWG
Motor Lead Termination	Flying Leads
Motor Standards	NEMA
Motor Type	3520M
Mounting Arrangement	F1
Number of Poles	2
Overall Length	15.41 IN
Power Factor	85
Product Family	General Purpose
Pulley End Bearing Type	Ball
Pulley Face Code	C-Face
Pulley Shaft Indicator	Tapped & Key
Rodent Screen	None
RoHS Status	ROHS COMPLIANT
Service Factor	1.15
Shaft Diameter	0.875 IN
Shaft Extension Location	Pulley End
Shaft Ground Indicator	No Shaft Grounding
Shaft Rotation	Reversible
Shaft Slinger Indicator	Shaft Slinger
Speed	3500 rpm
Speed Code	Single Speed
Starting Method	Direct on line
Thermal Device - Bearing	None
Thermal Device - Winding	None
Vibration Sensor Indicator	No Vibration Sensor

Winding Thermal 1

None

---

Winding Thermal 2

None

---

**Nameplate**

**NP3441LUA**

<b>CAT.NO.</b>	EJMM3550T						
<b>SPEC</b>	35T921M760G1						
<b>HP</b>	1.5						
<b>VOLTS</b>	230/460						
<b>AMPS</b>	3.8/1.9						
<b>RPM</b>	3500						
<b>FRAME</b>	143JM		<b>HZ</b>	60		<b>PH</b>	3
<b>SF</b>	1.15	<b>CODE</b>	L	<b>DES</b>	B	<b>CLASS</b>	F
<b>NEMA NOM. EFF</b>	84	<b>PF</b>	85				
<b>RATING</b>	40C AMB-CONT						
<b>CC</b>	010A						
<b>ENCL</b>	TEFC	<b>SER</b>					
<b>DE</b>	6206	<b>ODE</b>	6203				
<b>VPWM INVERTER READY</b>	SFA 4.4/2.2						
<b>CT6-60H(10:1)VT3-60H(20:1)</b>	50Hz 1.5HP 190/380V 4.6/2.3A						SF1.0

**AC Induction Motor Performance Data**

Record # 52482

Typical performance - not guaranteed values

Winding: 35WGM760-R051		Type: 3520M	Enclosure: TEFC
<b>Nameplate Data</b>		<b>460 V, 60 Hz: High Voltage Connection</b>	
Rated Output (HP)	1.5	Full Load Torque	2.22 LB-FT
Volts	230/460	Start Configuration	direct on line
Full Load Amps	3.8/1.9	Breakdown Torque	9.49 LB-FT
R.P.M.	3500	Pull-up Torque	3.61 LB-FT
Hz	60 Phase	Locked-rotor Torque	7.35 LB-FT
NEMA Design Code	B KVA Code	Starting Current	17.9 A
Service Factor (S.F.)	1.15	No-load Current	0.932 A
NEMA Nom. Eff.	84 Power Factor	Line-line Res. @ 25°C	12.2 Ω
Rating - Duty	40C AMB-CONT	Temp. Rise @ Rated Load	43°C
S.F. Amps		Temp. Rise @ S.F. Load	50°C
		Locked-rotor Power Factor	60.1
		Rotor inertia	0.0553 LB-FT <sup>2</sup>

**Load Characteristics 460 V, 60 Hz, 1.5 HP**

% of Rated Load	25	50	75	100	125	150	S.F.
Power Factor	45	67	79	85	89	90	87
Efficiency	72.3	82.2	84.4	84.8	84.3	82.8	84.5
Speed	3575	3551	3526	3498	3466	3433	3479
Line amperes	1.03	1.25	1.55	1.91	2.31	2.79	2.15

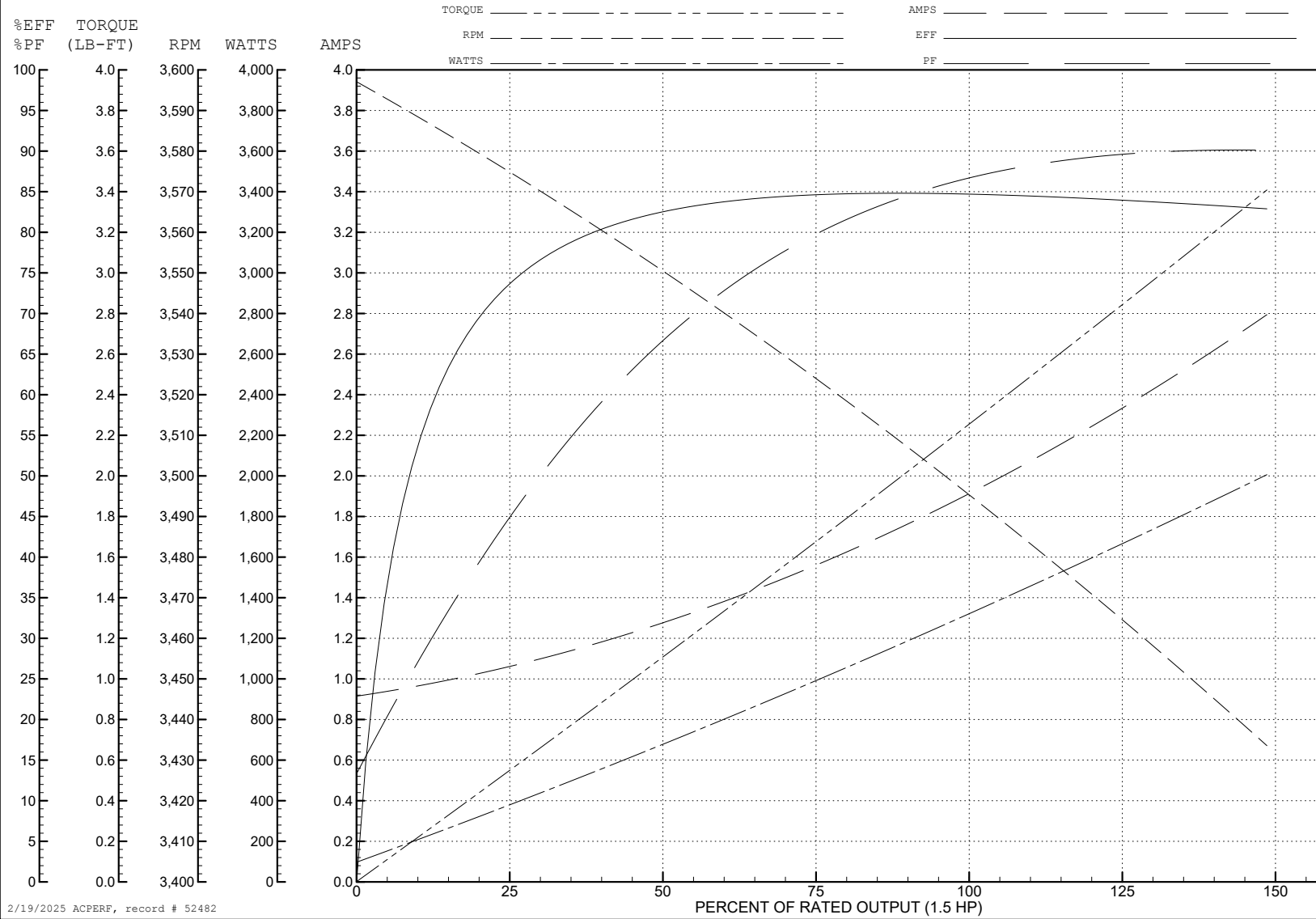
ABB Motors and Mechanical Inc.

WINDING # 35WGM760

Typical performance - not guaranteed values.

1.5 HP 3 PH 60 HZ 3500 RPM 460 V 3520M

TORQUES (LB-FT): PO=9.49 PU=3.61 LR=7.35 LRA=17.9



2/19/2025 ACPERF, record # 52482

**AC Induction Motor Performance Data**

Record # 59170

Typical performance - not guaranteed values

<b>Winding: 35WGM760-R051</b>		<b>Type: 3520M</b>		<b>Enclosure: TEFC</b>	
<b>Nameplate Data</b>			<b>230 V, 60 Hz: Low Voltage Connection</b>		
<b>Rated Output (HP)</b>	1.5	<b>Full Load Torque</b>	2.22 LB-FT		
<b>Volts</b>	230/460	<b>Start Configuration</b>	direct on line		
<b>Full Load Amps</b>	3.8/1.9	<b>Breakdown Torque</b>	9.49 LB-FT		
<b>R.P.M.</b>	3500	<b>Pull-up Torque</b>	3.61 LB-FT		
<b>Hz</b>	60 <b>Phase</b>	3	<b>Locked-rotor Torque</b>	7.35 LB-FT	
<b>NEMA Design Code</b>	<b>B KVA Code</b>	L	<b>Starting Current</b>	35.8 A	
<b>Service Factor (S.F.)</b>		1.15	<b>No-load Current</b>	1.86 A	
<b>NEMA Nom. Eff.</b>	84 <b>Power Factor</b>	85	<b>Line-line Res. @ 25°C</b>	3.04 Ω	
<b>Rating - Duty</b>	40C AMB-CONT		<b>Temp. Rise @ Rated Load</b>	43°C	
<b>S.F. Amps</b>			<b>Temp. Rise @ S.F. Load</b>	50°C	
			<b>Locked-rotor Power Factor</b>	60.1	
			<b>Rotor inertia</b>	0.0553 LB-FT <sup>2</sup>	

**Load Characteristics 230 V, 60 Hz, 1.5 HP**

<b>% of Rated Load</b>	<b>25</b>	<b>50</b>	<b>75</b>	<b>100</b>	<b>125</b>	<b>150</b>	<b>S.F.</b>
<b>Power Factor</b>	45	67	79	85	89	90	87
<b>Efficiency</b>	72.3	82.2	84.4	84.8	84.3	82.8	84.5
<b>Speed</b>	3575	3551	3526	3498	3466	3433	3479
<b>Line amperes</b>	2.06	2.5	3.1	3.82	4.62	5.58	4.3



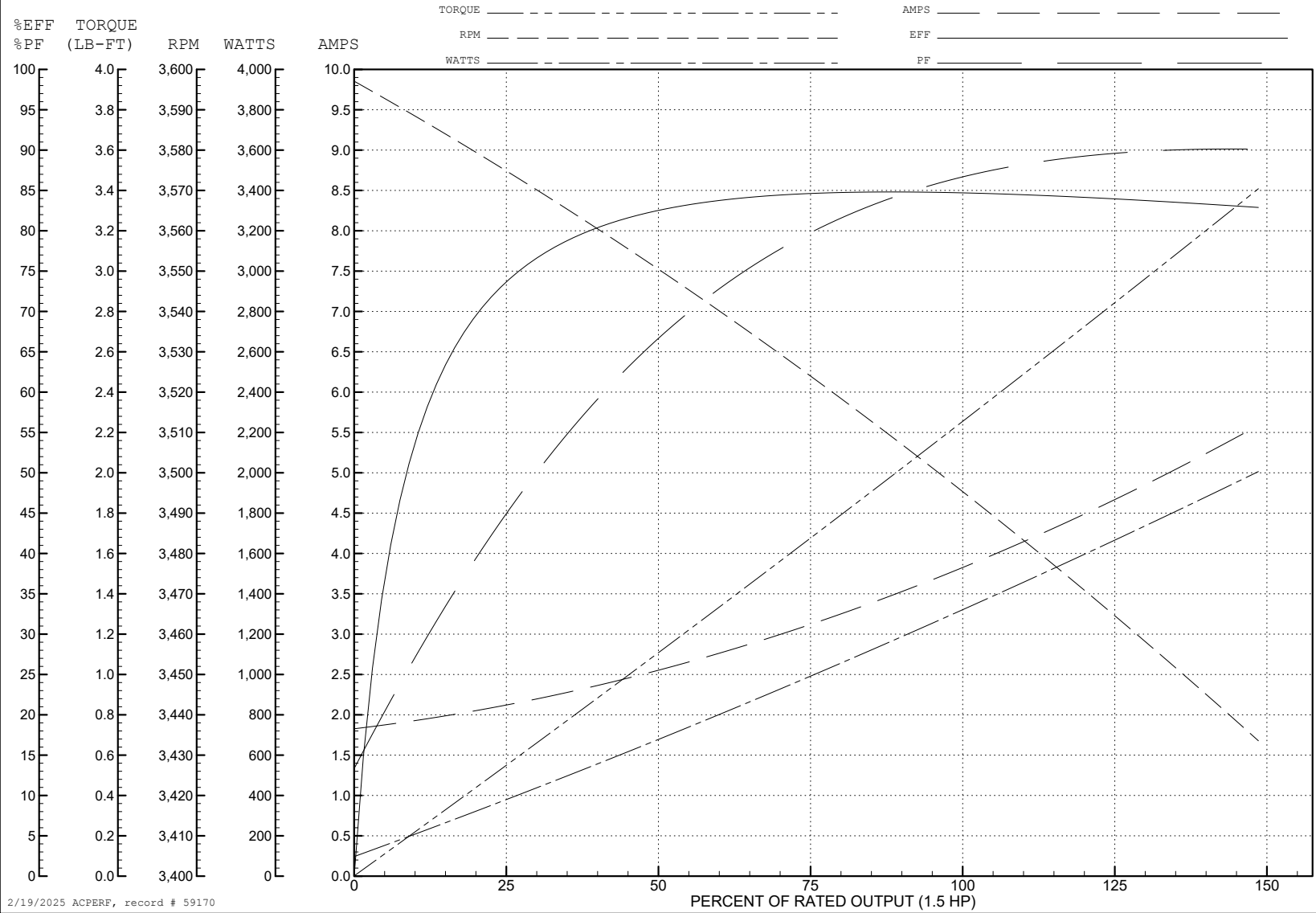
ABB Motors and Mechanical Inc.

WINDING # 35WGM760

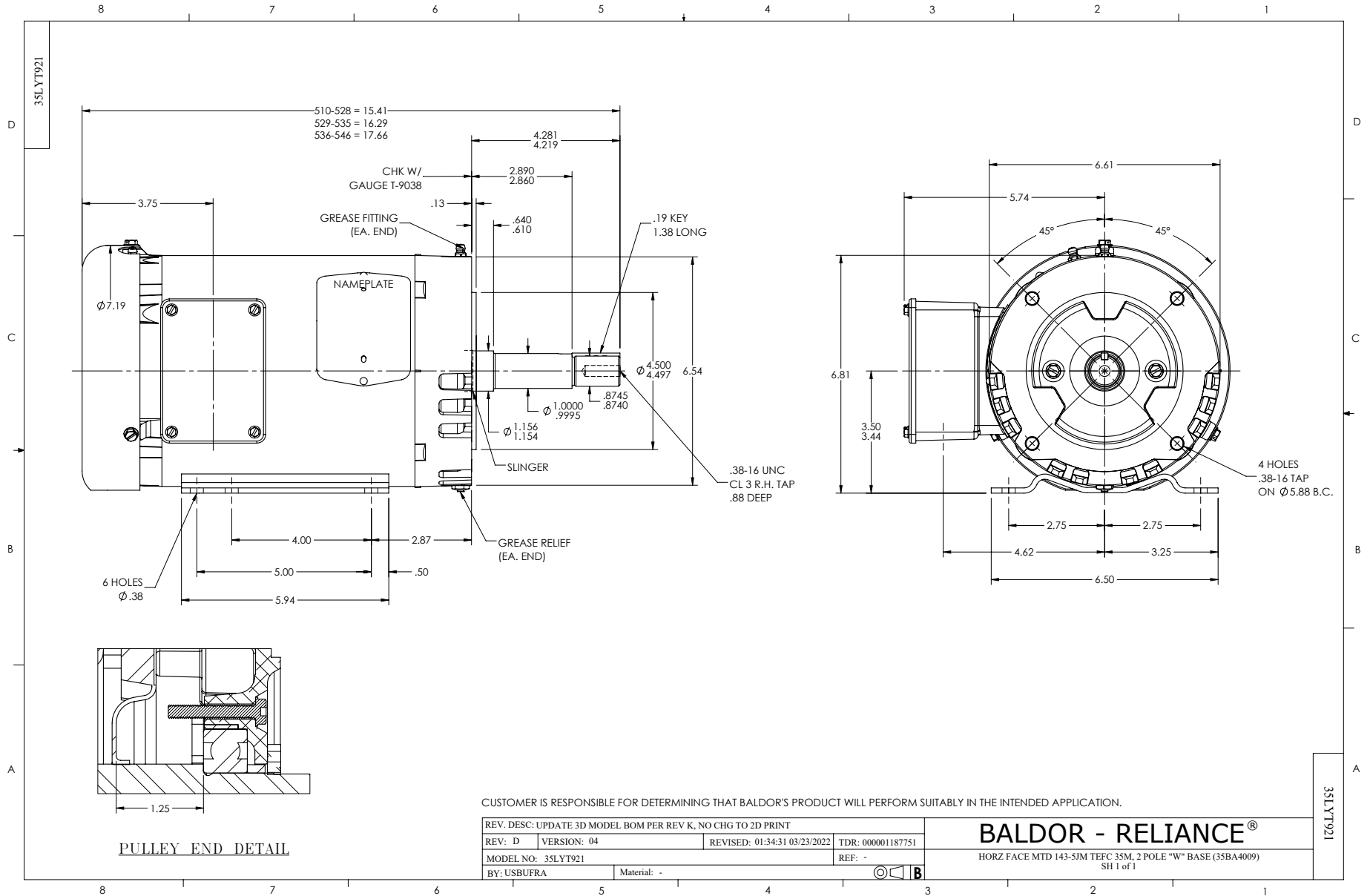
Typical performance - not guaranteed values.

1.5 HP 3 PH 60 HZ 3500 RPM 230 V 3520M

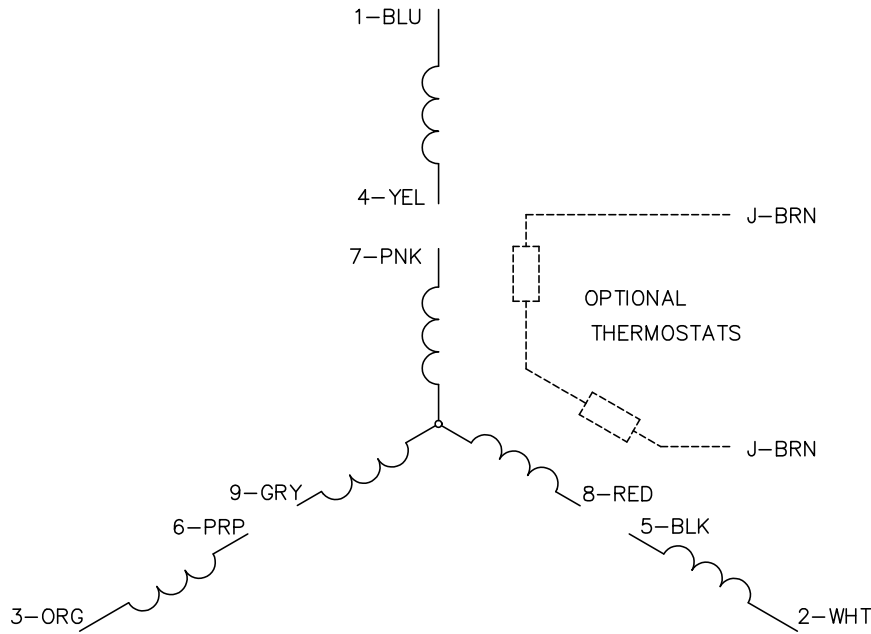
TORQUES (LB-FT): PO=9.49 PU=3.61 LR=7.35 LRA=35.8



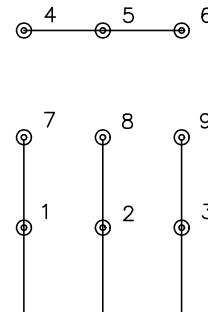
2/19/2025 ACPERF, record # 59170



CD0005

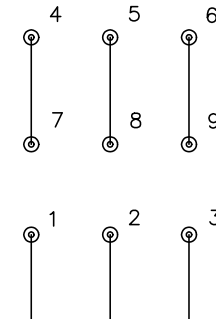


LOW VOLTAGE  
(2Y)



LINE

HIGH VOLTAGE  
(1Y)



LINE

NOTES:

1. INTERCHANGE ANY TWO LINE LEADS TO REVERSE ROTATION.
2. OPTIONAL THERMOSTATS ARE PROVIDED WHEN SPECIFIED.
3. ACTUAL NUMBER OF INTERNAL PARALLEL CIRCUITS MAY BE A MULTIPLE OF THOSE SHOWN ABOVE.
4. LEAD COLORS ARE OPTIONAL. LEADS MUST ALWAYS BE NUMBERED AS SHOWN.

CD0005

REV. DESC: REVISE TO SHOW OPTIONAL COLORS			
REV. LTR: E	BY: JLP	REVISED: 01/19/99 10:15	TDR: 0171435
S00000		FILE: AAA00005140	MDL: -
		MTL: -	

**BALDOR ELECTRIC Co.**

3PH, DV, 9 LEADS