



Customer information packet

EJMM3550T-G

1.5HP, 3500RPM, 3PH, 60HZ, 143JM, 3520M, TEFC

Class - None

Division - Not Applicable

Specifications

Enclosure	TEFC
Frame	143JM
Frame Material	Steel
Frequency	60.00 Hz
Haz Area Class and Group	None
Haz Area Division	Not Applicable
Motor Letter Type	Three Phase
Output @ Frequency	1.500 HP @ 60 HZ
Phase	3
Synchronous Speed @ Frequency	3600 RPM @ 60 HZ
Voltage @ Frequency	230.0 V @ 60 HZ 460.0 V @ 60 HZ
Ambient Temperature	40 °C
Auxillary Box	No Auxillary Box
Auxillary Box Lead Termination	None
Base Indicator	Rigid
Bearing Grease Type	Polyrex EM (-20F +300F)
Blower	None
Current @ Voltage	1.900 A @ 460.0 V 3.800 A @ 230.0 V 4.000 A @ 208.0 V
Design Code	B
Drip Cover	No Drip Cover
Duty Rating	CONT
Efficiency @ 100% Load	84.0 %
Electrically Isolated Bearing	Not Electrically Isolated
Feedback Device	NO FEEDBACK
Front Shaft Indicator	None
Heater Indicator	No Heater
High Voltage Full Load Amps	1.9 a
Insulation Class	F
Inverter Code	Not Inverter

Part detail

Revision	H
Type	AC
Mech. spec.	35E1603
Base	
Status	PRD/A
Elec. spec.	35WGM760
Layout	35LYE1603
Eff. date	08-22-2024
CD Diagram	CD0005
Poles	02
Leads	9#18
Proprietary	False
Created date	04-02-2018

KVA Code	L
Lifting Lugs	No Lifting Lugs
Locked Bearing Indicator	Locked Bearing
Motor Lead Quantity/Wire Size	9 @ 18 AWG
Motor Lead Termination	Flying Leads
Motor Standards	NEMA
Motor Type	3520M
Mounting Arrangement	F1
Number of Poles	2
Overall Length	15.41 IN
Power Factor	85
Product Family	General Purpose
Pulley End Bearing Type	Ball
Pulley Face Code	C-Face
Pulley Shaft Indicator	Tapped & Key
Rodent Screen	None
RoHS Status	ROHS COMPLIANT
Service Factor	1.15
Shaft Diameter	0.875 IN
Shaft Ground Indicator	Shaft Grounding
Shaft Rotation	Reversible
Shaft Slinger Indicator	Shaft Slinger
Speed	3500 rpm
Speed Code	Single Speed
Starting Method	Direct on line
Thermal Device - Winding	None
Vibration Sensor Indicator	No Vibration Sensor
Winding Thermal 1	None
Winding Thermal 2	None

Nameplate

NP3441LUA									
CAT.NO.	EJMM3550T-G								
SPEC	35E1603M760G1								
HP	1.5								
VOLTS	230/460								
AMPS	3.8/1.9								
RPM	3500								
FRAME	143JM		HZ	60		PH	3		
SF	1.15	CODE	L	DES	B	CLASS	F		
NEMA NOM. EFF	84	PF	85						
RATING	40C AMB-CONT								
CC	010A								
ENCL	TEFC	SER							
DE	6206	ODE	6203						
VPWM INVERTER READY	SFA 4.4/2.2								
CT6-60H(10:1)VT3-60H(20:1)									

AC Induction Motor Performance Data

Record # 52482

Typical performance - not guaranteed values

Winding: 35WGM760-R051		Type: 3520M		Enclosure: TEFC			
Nameplate Data			460 V, 60 Hz: High Voltage Connection				
Rated Output (HP)	1.5	Full Load Torque	2.22 LB-FT				
Volts	230/460	Start Configuration	direct on line				
Full Load Amps	3.8/1.9	Breakdown Torque	9.49 LB-FT				
R.P.M.	3500	Pull-up Torque	3.61 LB-FT				
Hz	60 Phase	3	Locked-rotor Torque	7.35 LB-FT			
NEMA Design Code	B	KVA Code	L	Starting Current	17.9 A		
Service Factor (S.F.)	1.15	No-load Current	0.932 A				
NEMA Nom. Eff.	84	Power Factor	85	Line-line Res. @ 25°C	12.2 Ω		
Rating - Duty	40C AMB-CONT		Temp. Rise @ Rated Load	43°C			
S.F. Amps			Temp. Rise @ S.F. Load	50°C			
			Locked-rotor Power Factor	60.1			
			Rotor inertia	0.0553 LB-FT ²			

Load Characteristics 460 V, 60 Hz, 1.5 HP

% of Rated Load	25	50	75	100	125	150	S.F.
Power Factor	45	67	79	85	89	90	87
Efficiency	72.3	82.2	84.4	84.8	84.3	82.8	84.5
Speed	3575	3551	3526	3498	3466	3433	3479
Line amperes	1.03	1.25	1.55	1.91	2.31	2.79	2.15

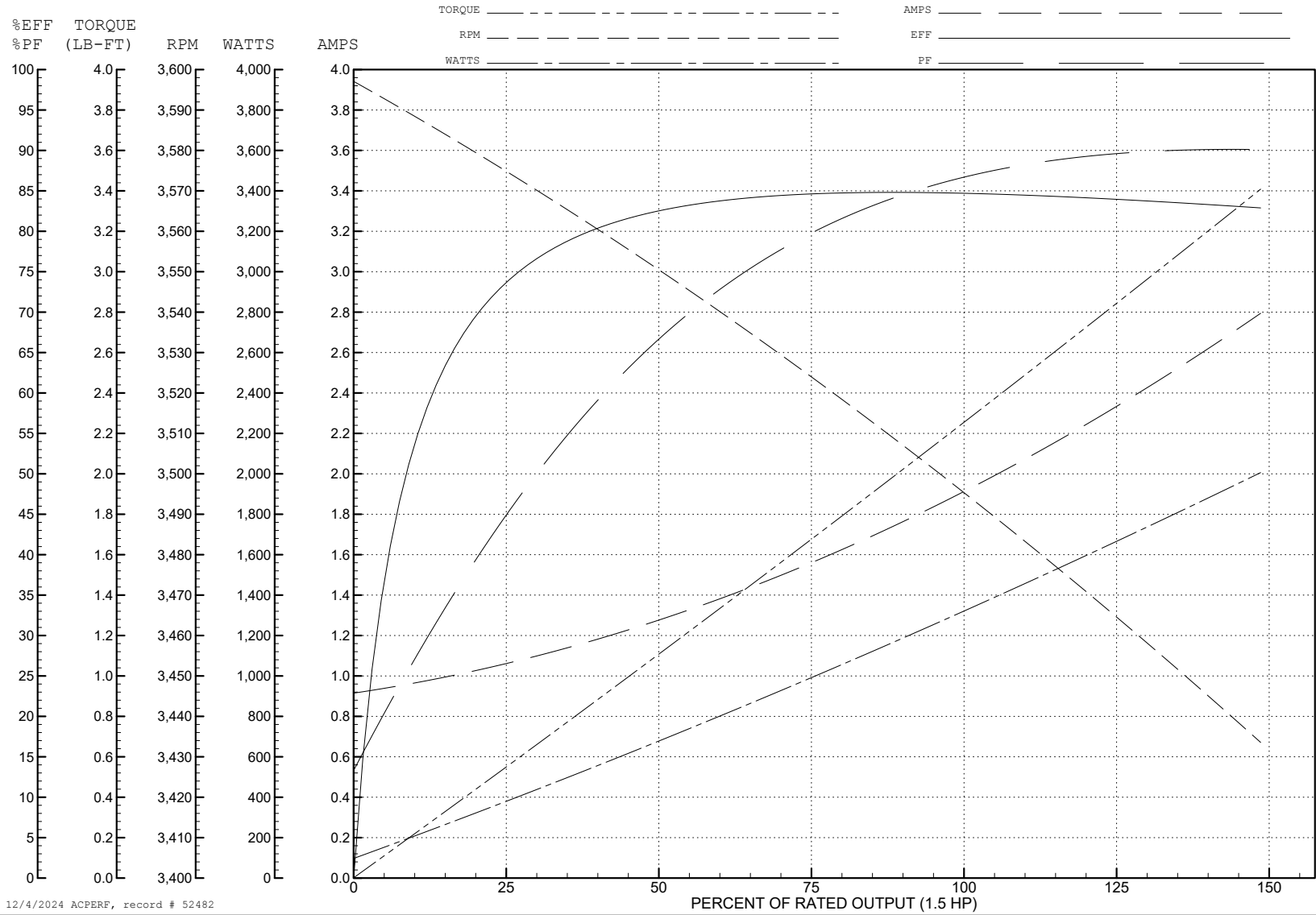
ABB Motors and Mechanical Inc.

WINDING # 35WGM760

Typical performance - not guaranteed values.

1.5 HP 3 PH 60 HZ 3500 RPM 460 V 3520M

TORQUES (LB-FT): PO=9.49 PU=3.61 LR=7.35 LRA=17.9



12/4/2024 ACPERF, record # 52482

AC Induction Motor Performance Data

Record # 59170

Typical performance - not guaranteed values

Winding: 35WGM760-R051		Type: 3520M		Enclosure: TEFC	
Nameplate Data			230 V, 60 Hz: Low Voltage Connection		
Rated Output (HP)	1.5	Full Load Torque	2.22 LB-FT		
Volts	230/460	Start Configuration	direct on line		
Full Load Amps	3.8/1.9	Breakdown Torque	9.49 LB-FT		
R.P.M.	3500	Pull-up Torque	3.61 LB-FT		
Hz	60 Phase	3	Locked-rotor Torque	7.35 LB-FT	
NEMA Design Code	B KVA Code	L	Starting Current	35.8 A	
Service Factor (S.F.)		1.15	No-load Current	1.86 A	
NEMA Nom. Eff.	84 Power Factor	85	Line-line Res. @ 25°C	3.04 Ω	
Rating - Duty	40C AMB-CONT		Temp. Rise @ Rated Load	43°C	
S.F. Amps			Temp. Rise @ S.F. Load	50°C	
			Locked-rotor Power Factor	60.1	
			Rotor inertia	0.0553 LB-FT ²	

Load Characteristics 230 V, 60 Hz, 1.5 HP

% of Rated Load	25	50	75	100	125	150	S.F.
Power Factor	45	67	79	85	89	90	87
Efficiency	72.3	82.2	84.4	84.8	84.3	82.8	84.5
Speed	3575	3551	3526	3498	3466	3433	3479
Line amperes	2.06	2.5	3.1	3.82	4.62	5.58	4.3

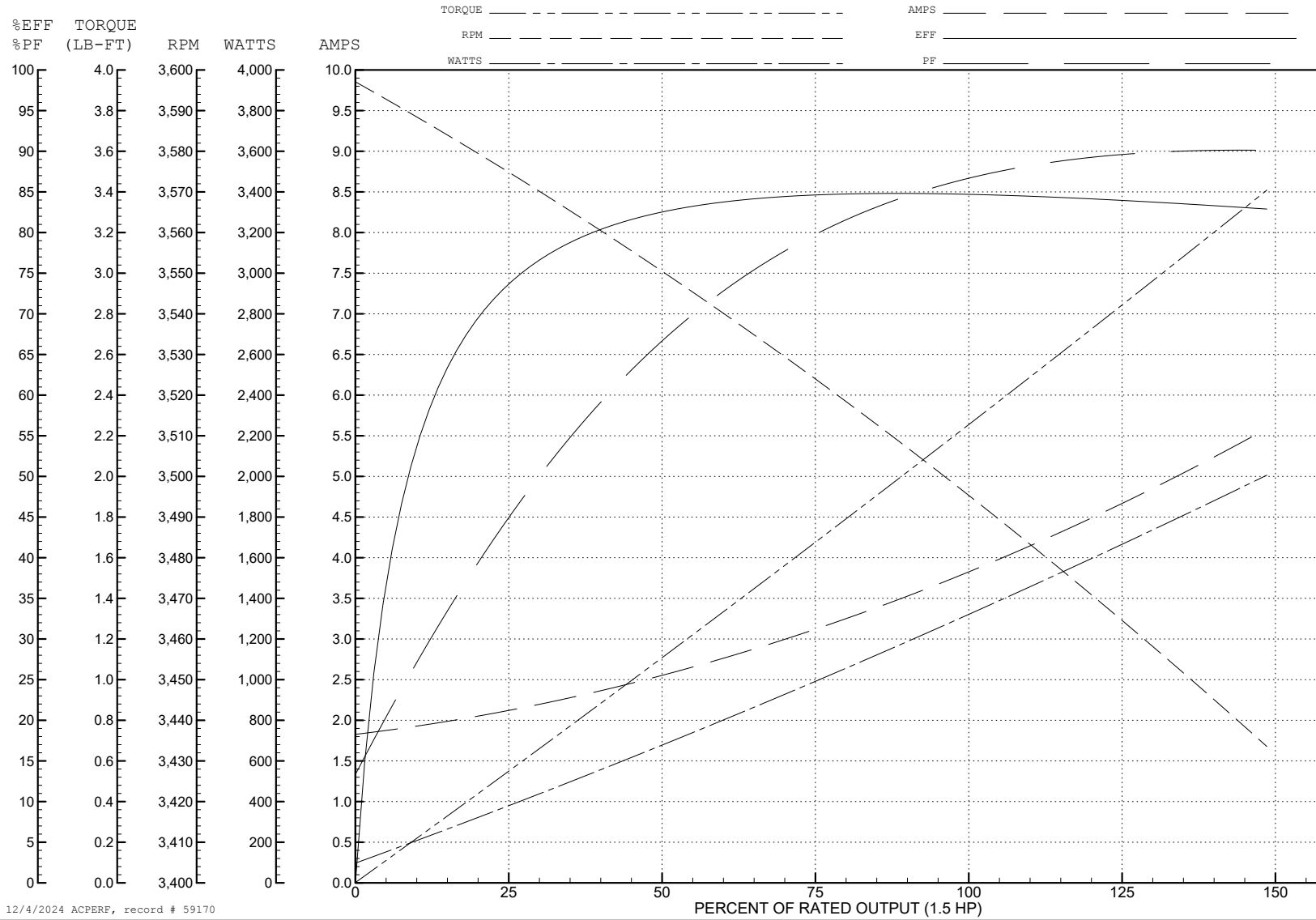
ABB Motors and Mechanical Inc.

WINDING # 35WGM760

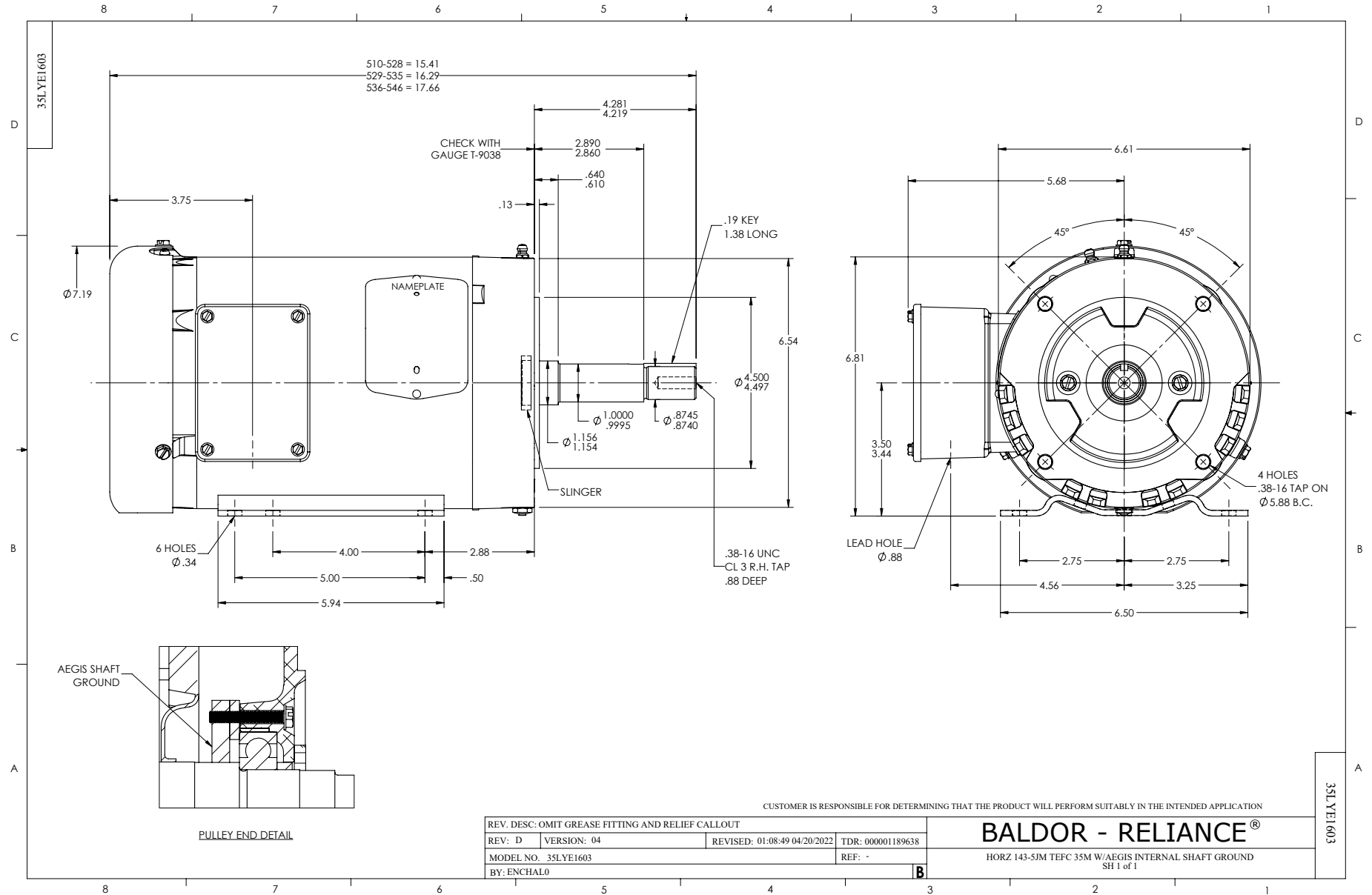
Typical performance - not guaranteed values.

1.5 HP 3 PH 60 HZ 3500 RPM 230 V 3520M

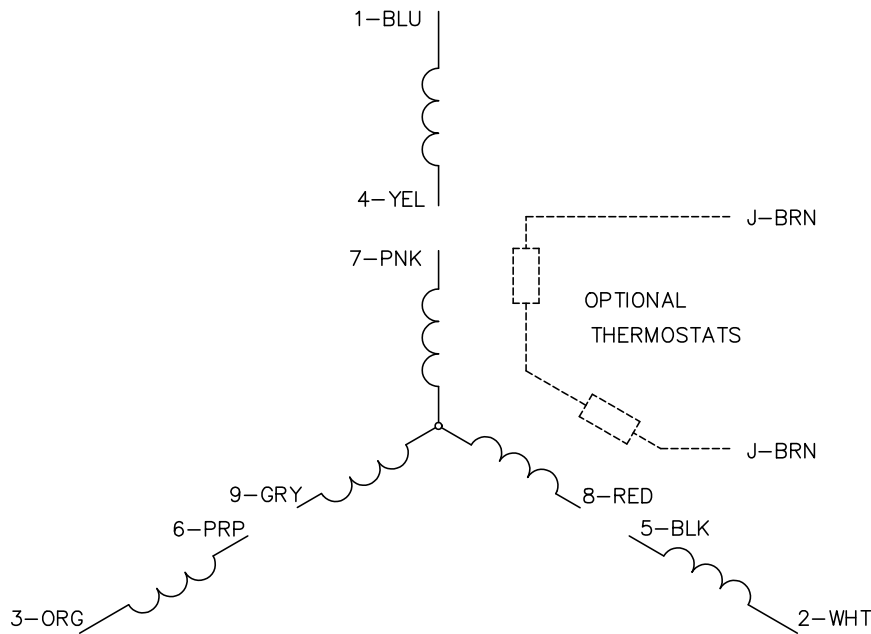
TORQUES (LB-FT): PO=9.49 PU=3.61 LR=7.35 LRA=35.8



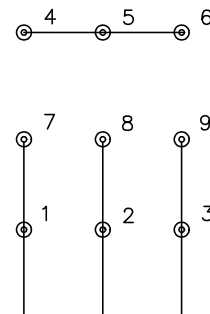
12/4/2024 ACPERF, record # 59170



CD0005

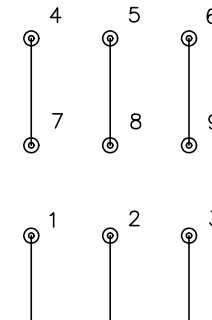


LOW VOLTAGE
(2Y)



LINE

HIGH VOLTAGE
(1Y)



LINE

NOTES:

1. INTERCHANGE ANY TWO LINE LEADS TO REVERSE ROTATION.
2. OPTIONAL THERMOSTATS ARE PROVIDED WHEN SPECIFIED.
3. ACTUAL NUMBER OF INTERNAL PARALLEL CIRCUITS MAY BE A MULTIPLE OF THOSE SHOWN ABOVE.
4. LEAD COLORS ARE OPTIONAL. LEADS MUST ALWAYS BE NUMBERED AS SHOWN.

CD0005

REV. DESC: REVISE TO SHOW OPTIONAL COLORS			
REV. LTR: E	BY: JLP	REVISED: 01/19/99 10:15	TDR: 0171435
S00000		FILE: AAA00005140	MDL: -
		MTL: -	

BALDOR ELECTRIC Co.

3PH, DV, 9 LEADS