

**BALDOR • RELIANCE**

---

# Customer information packet

## EJMM3314T

15HP, 3485RPM, 3PH, 60HZ, 215JM, 3734M, OPSB, F

Class - None

Division - Not Applicable

## Specifications

Enclosure	OPSB
Frame	215JM
Frame Material	Steel
Frequency	60.00 Hz
Haz Area Class and Group	None
Haz Area Division	Not Applicable
Motor Letter Type	Three Phase
Output @ Frequency	15.000 HP @ 60 HZ
Phase	3
Synchronous Speed @ Frequency	3600 RPM @ 60 HZ
Voltage @ Frequency	230.0 V @ 60 HZ 460.0 V @ 60 HZ
Agency Approvals	CSA CSA EEV NEMA PREMIUM UR
Ambient Temperature	40 °C
Auxillary Box	No Auxillary Box
Auxillary Box Lead Termination	None
Base Indicator	Rigid
Bearing Grease Type	Polyrex EM (-20F +300F)
Blower	None
Current @ Voltage	37.400 A @ 208.0 V 35.400 A @ 230.0 V 17.700 A @ 460.0 V
Design Code	B
Drip Cover	No Drip Cover
Duty Rating	CONT
Efficiency @ 100% Load	90.2 %
Electrically Isolated Bearing	Not Electrically Isolated
Feedback Device	NO FEEDBACK
Front Shaft Indicator	None

## Part detail

Revision	E
Type	AC
Mech. spec.	37F784
Base	
Status	PRD/A
Elec. spec.	37WGL867
Layout	37LYF784
Eff. date	06-11-2024
CD Diagram	CD0005
Poles	02
Leads	9#12
Proprietary	False
Created date	11-11-2020

Heater Indicator	No Heater
High Voltage Full Load Amps	17.7 a
Insulation Class	F
Inverter Code	Inverter Ready
KVA Code	G
Lifting Lugs	Standard Lifting Lugs
Locked Bearing Indicator	Locked Bearing
Motor Lead Quantity/Wire Size	9 @ 12 AWG
Motor Lead Termination	Flying Leads
Motor Standards	NEMA
Motor Type	3734M
Mounting Arrangement	F1
Number of Poles	2
Overall Length	18.19 IN
Power Factor	88
Product Family	General Purpose
Pulley End Bearing Type	Ball
Pulley Face Code	C-Face
Pulley Shaft Indicator	Tapped & Key
Rodent Screen	Included
RoHS Status	ROHS COMPLIANT
Service Factor	1.15
Shaft Diameter	0.875 IN
Shaft Ground Indicator	No Shaft Grounding
Shaft Rotation	Reversible
Shaft Slinger Indicator	No Slinger
Speed	3485 rpm
Speed Code	Single Speed
Starting Method	Direct on line
Thermal Device - Bearing	None
Thermal Device - Winding	None
Vibration Sensor Indicator	No Vibration Sensor
Winding Thermal 1	None
Winding Thermal 2	None

**Nameplate**

<b>NP3553LUA</b>									
<b>CAT.NO.</b>	EJMM3314T								
<b>SPEC.</b>	37F784L867G1								
<b>HP</b>	15								
<b>VOLTS</b>	230/460								
<b>AMPS</b>	35.4/17.7								
<b>RPM</b>	3485								
<b>FRAME</b>	215JM		<b>HZ</b>	60		<b>PH</b>	3		
<b>SF</b>	1.15	<b>CODE</b>	G	<b>DES</b>	B	<b>CLASS</b>	F		
<b>NEMA NOM. EFF</b>	90.2	<b>PF</b>	88						
<b>RATING</b>	40C AMB-CONT								
<b>CC</b>	010A								
<b>ENCL</b>	OPSB	<b>SN</b>							
<b>DE</b>	6309	<b>ODE</b>	6206						
<b>VPWM INVERTER READY</b>									
<b>CT30-60(2:1) VT3-60(20:1)</b>									
<b>USABLE AT</b>	50HZ 15HP 190/380V 44/22.0A							SF1.0	

**AC Induction Motor Performance Data**

Record # 85595

Preliminary Data Sheet

Winding: 37WGL867-R001		Type: 3734M	Enclosure: OPSB	
<b>Nameplate Data</b>			<b>460 V, 60 Hz: High Voltage Connection</b>	
Rated Output (HP)	15	Full Load Torque	22.6 LB-FT	
Volts	230/460	Start Configuration	direct on line	
Full Load Amps	35.4/17.7	Breakdown Torque	56.5 LB-FT	
R.P.M.	3485	Pull-up Torque	33.5 LB-FT	
Hz	60 Phase	Locked-rotor Torque	39.3 LB-FT	
NEMA Design Code	B KVA Code	Starting Current	109 A	
Service Factor (S.F.)	1.15	No-load Current	5.57 A	
NEMA Nom. Eff.	90.2 Power Factor	Line-line Res. @ 25°C	0.761 Ω	
Rating - Duty	40C AMB-CONT	Temp. Rise @ Rated Load	48°C	
S.F. Amps	40.8/20.4	Temp. Rise @ S.F. Load	63°C	
		Locked-rotor Power Factor	41.3	
		Rotor inertia	0.31 lb-ft <sup>2</sup>	

**Load Characteristics 460 V, 60 Hz, 15 HP**

% of Rated Load	25	50	75	100	125	150	S.F.
Power Factor	57	77	85	88	89	88	89
Efficiency	90	92.3	91.8	90.6	88.9	86.8	89.3
Speed	3574	3547	3518	3486	3448	3406	3457
Line amperes	6.92	9.85	13.5	17.7	22.2	27.3	20.4

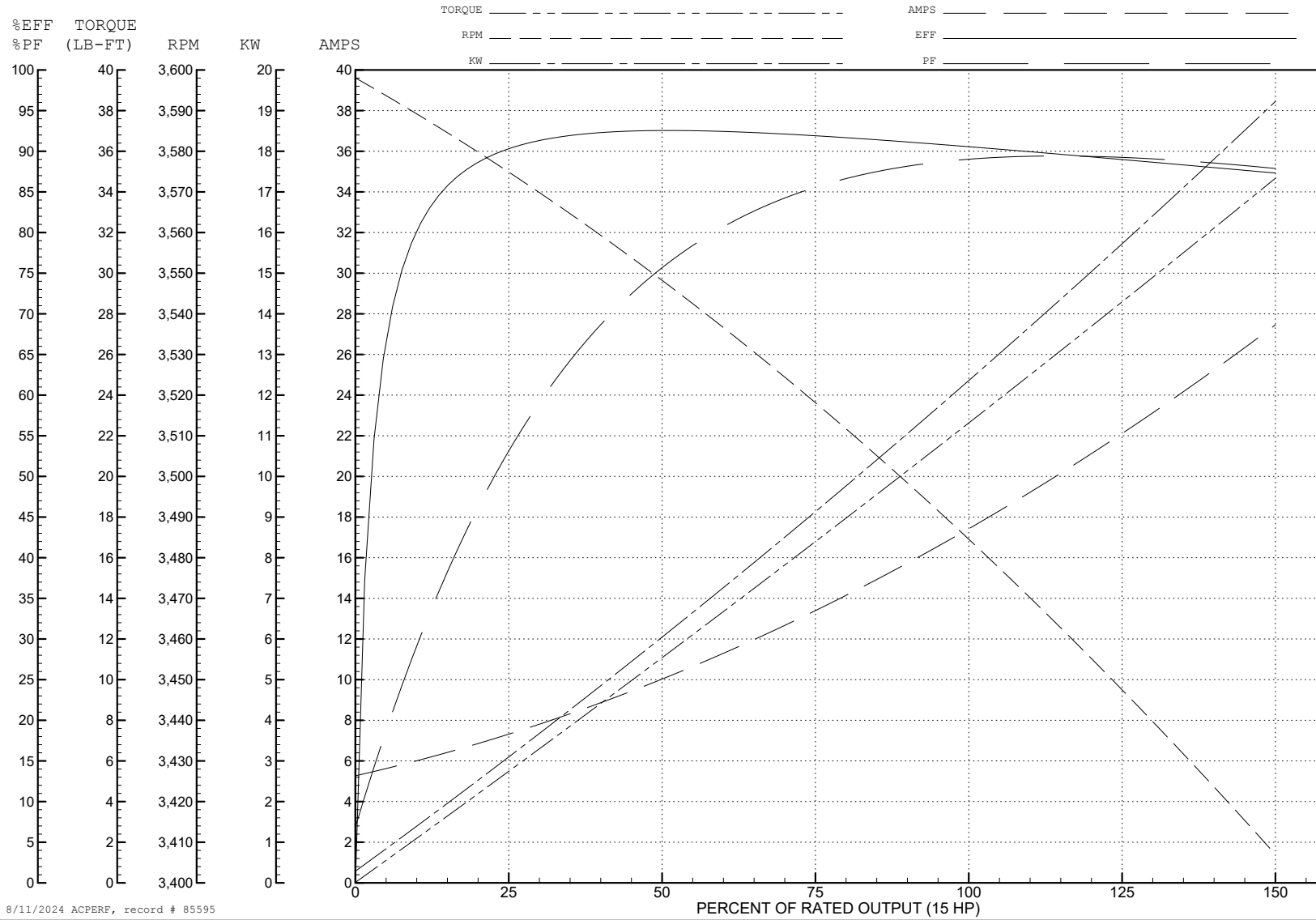
ABB Motors and Mechanical Inc.

WINDING # 37WGL867

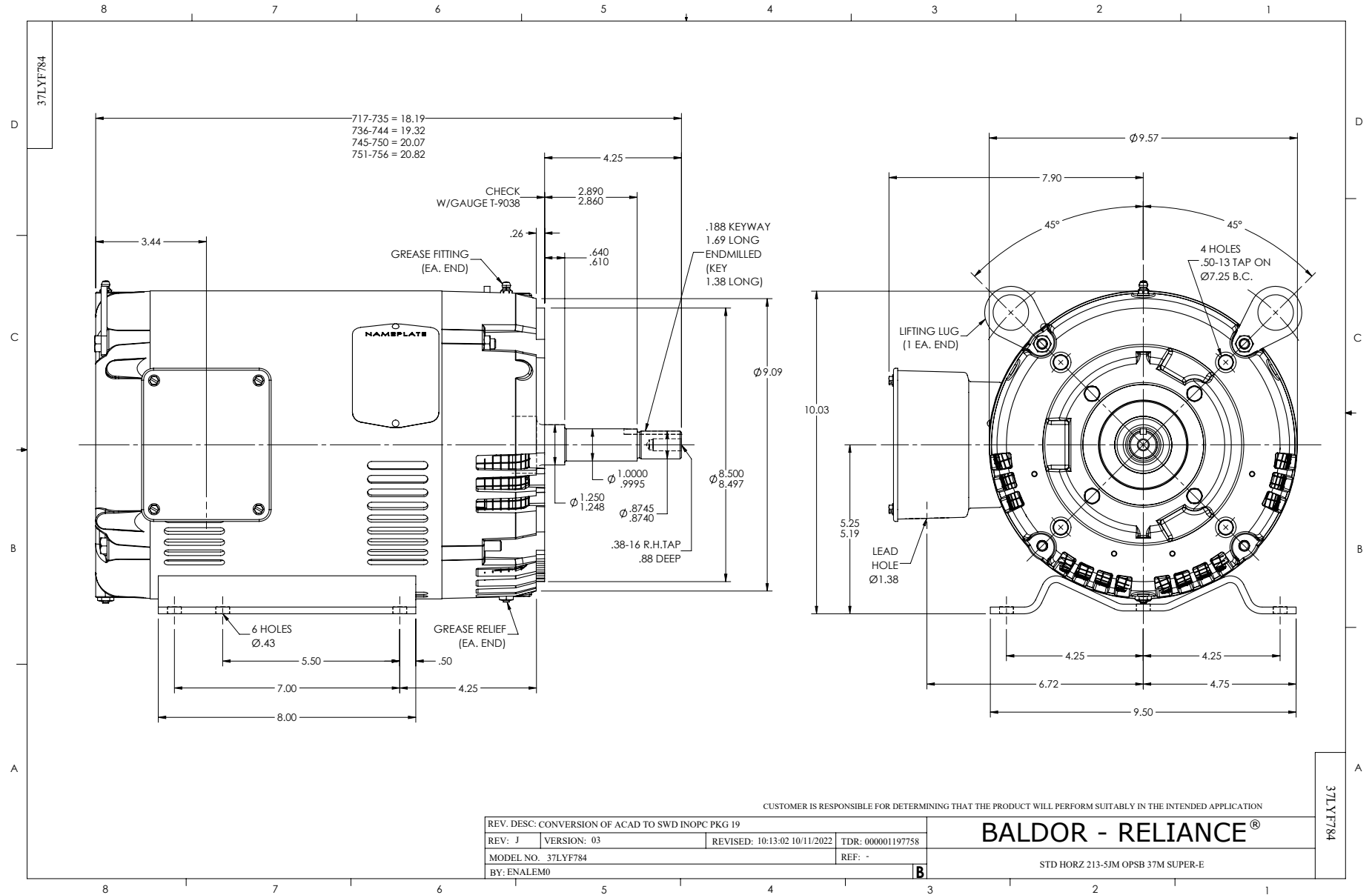
Typical performance - not guaranteed values.

15 HP 3 PH 60 HZ 3485 RPM 460 V 3734M

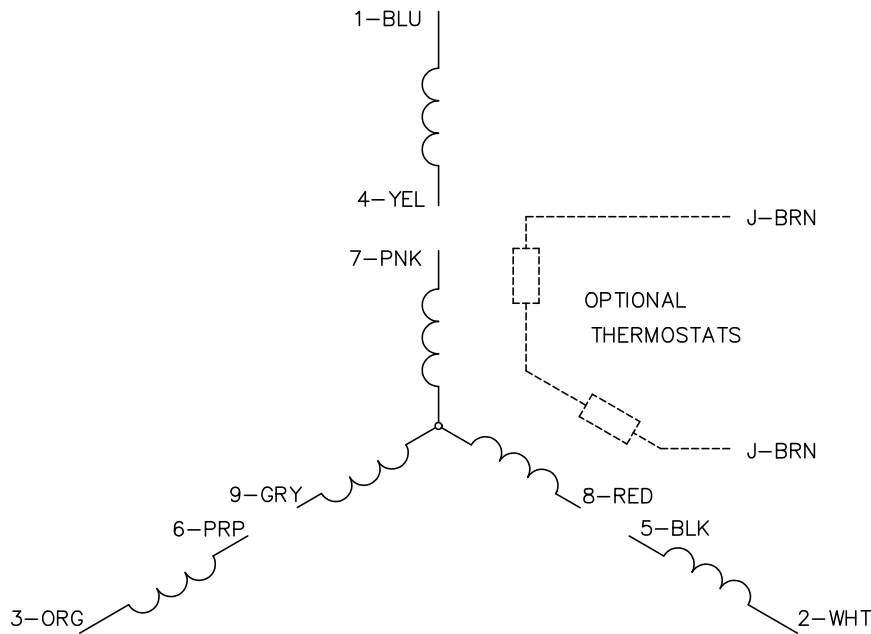
TORQUES (LB-FT): PO=56.5 PU=33.5 LR=39.3 LRA=109



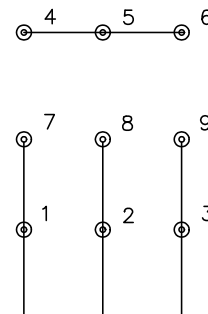
8/11/2024 ACPERF, record # 85595



CD0005

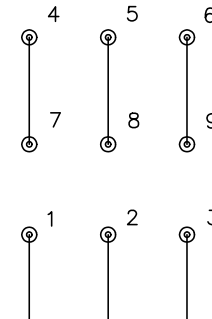


LOW VOLTAGE  
(2Y)



LINE

HIGH VOLTAGE  
(1Y)



LINE

NOTES:

1. INTERCHANGE ANY TWO LINE LEADS TO REVERSE ROTATION.
2. OPTIONAL THERMOSTATS ARE PROVIDED WHEN SPECIFIED.
3. ACTUAL NUMBER OF INTERNAL PARALLEL CIRCUITS MAY BE A MULTIPLE OF THOSE SHOWN ABOVE.
4. LEAD COLORS ARE OPTIONAL. LEADS MUST ALWAYS BE NUMBERED AS SHOWN.

CD0005

REV. DESC: REVISE TO SHOW OPTIONAL COLORS			
REV. LTR: E	BY: JLP	REVISED: 01/19/99 10:15	TDR: 0171435
S00000		FILE: AAA00005140	MDL: -
		MTL: -	

**BALDOR ELECTRIC Co.**

3PH, DV, 9 LEADS