

ABB BALDOR RELIANCE III

Customer information packet

EJMM3309T

5HP, 1160RPM, 3PH, 60HZ, 215JM, 3744M, OPSB, F1

Class - None

Division - Not Applicable

Specifications

Enclosure	OPSB
Frame	215JM
Frame Material	Steel
Frequency	60.00 Hz
Haz Area Class and Group	None
Haz Area Division	Not Applicable
Motor Letter Type	Three Phase
Output @ Frequency	5.000 HP @ 60 HZ
Phase	3
Synchronous Speed @ Frequency	1200 RPM @ 60 HZ
Voltage @ Frequency	460.0 V @ 60 HZ 230.0 V @ 60 HZ
Agency Approvals	CSA EEV NEMA PREMIUM UR CSA
Ambient Temperature	40 °C
Auxiliary Box	NO AUXILLARY BOX
Auxiliary Box Lead Termination	None
Base Indicator	Rigid
Bearing Grease Type	Polyrex EM (-20F +300F)
Blower	None
Current @ Voltage	15.200 A @ 208.0 V 7.400 A @ 460.0 V 14.800 A @ 230.0 V
Design Code	A
Drip Cover	No Drip Cover
Duty Rating	CONT
Efficiency @ 100% Load	89.5 %
Electrically Isolated Bearing	Not Electrically Isolated
Feedback Device	NO FEEDBACK
Front Face Code	Standard

Part Detail

Revision	N
Type	AC
Mech. spec.	37F696
Base	
Status	PRD/A
Elec. spec.	37WGS521
Layout	37LYF696
Eff. date	06-10-2026
CD Diagram	CD0005
Poles	06
Leads	9#14
Proprietary	False
Created date	05-27-2015

Front Shaft Indicator	None
Heater Indicator	No Heater
High Voltage Full Load Amps	7.4 a
Insulation Class	F
Inverter Code	Inverter Ready
KVA Code	K
Lifting Lugs	Standard Lifting Lugs
Locked Bearing Indicator	Locked Bearing
Motor Lead Exit	Ko Box
Motor Lead Quantity/Wire Size	9 @ 14 AWG
Motor Lead Termination	Flying Leads
Motor Standards	NEMA
Motor Type	3744M
Mounting Arrangement	F1
Number of Poles	6
Overall Length	19.31 IN
Power Factor	71
Product Family	General Purpose
Pulley End Bearing Type	Ball
Pulley Face Code	C-Face
Pulley Shaft Indicator	Tapped & Key
Rodent Screen	Included
Service Factor	1.15
Shaft Diameter	0.875 IN
Shaft Extension Location	Pulley End
Shaft Ground Indicator	No Shaft Grounding
Shaft Rotation	Reversible
Shaft Slinger Indicator	Shaft Slinger
Speed	1160 rpm
Speed Code	Single Speed
Starting Method	Direct on line
Thermal Device - Bearing	None
Thermal Device - Winding	None
Vibration Sensor Indicator	No Vibration Sensor

Winding Thermal 1

None

Winding Thermal 2

None

Nameplate

NP3553LUA									
CAT.NO.	EJMM3309T								
SPEC.	37F696S521G2								
HP	5								
VOLTS	230/460								
AMPS	14.8/7.4								
RPM	1160								
FRAME	215JM	HZ	60	PH	3				
SF	1.15	CODE	K	DES	A	CLASS	F		
NEMA NOM. EFF	89.5	PF	71						
RATING	40C AMB-CONT								
CC	010A								
ENCL	OPSB	SN							
DE	6309	ODE	6206						
VPWM INVERTER READY	SFA 16.6/8.3								
CT30-60(2:1) VT3-60(20:1)									
USABLE AT	50Hz 5HP 190/380V 17.2/8.6A								SF1.0

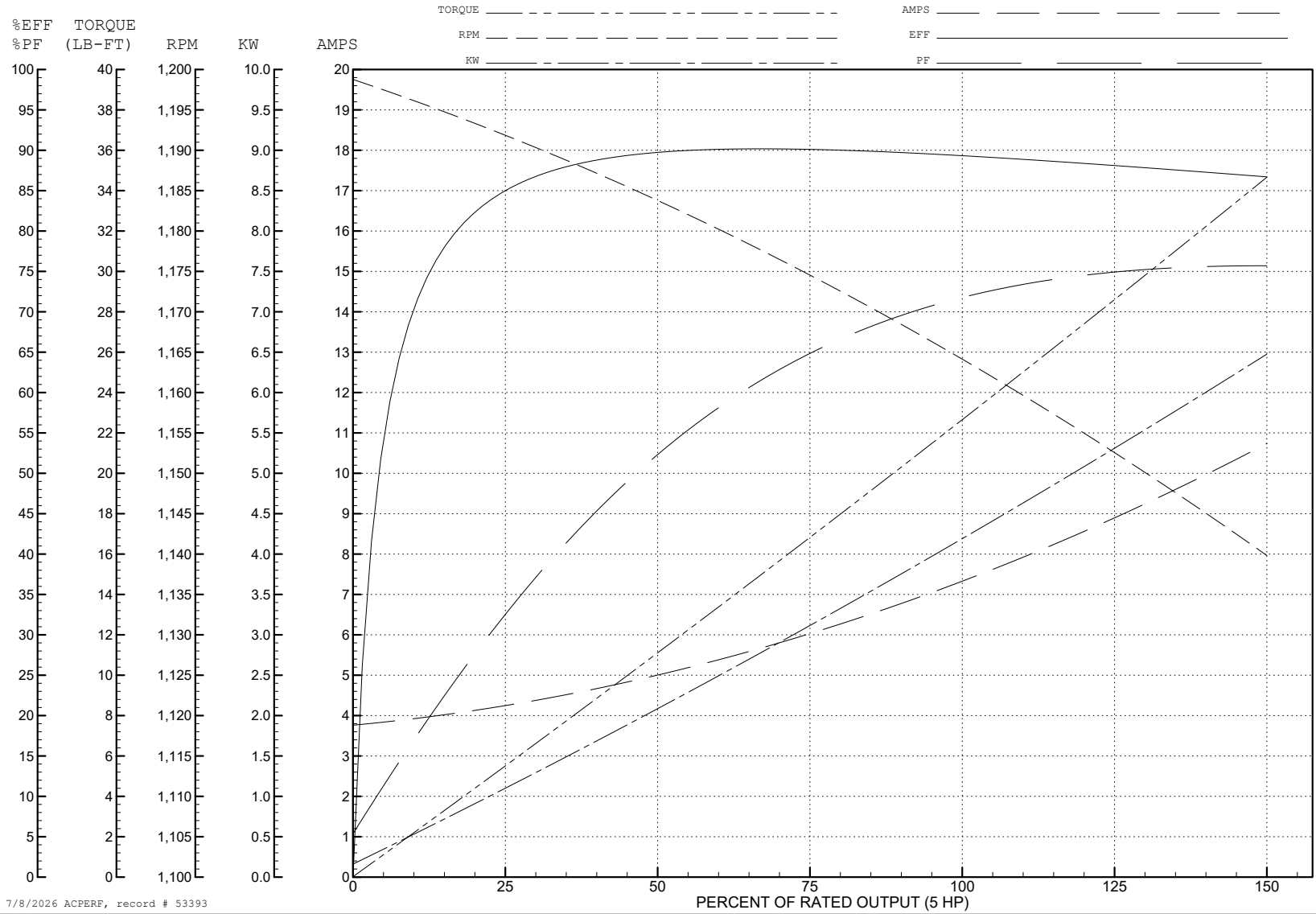
ABB Motors and Mechanical Inc.

WINDING # 37WGS521

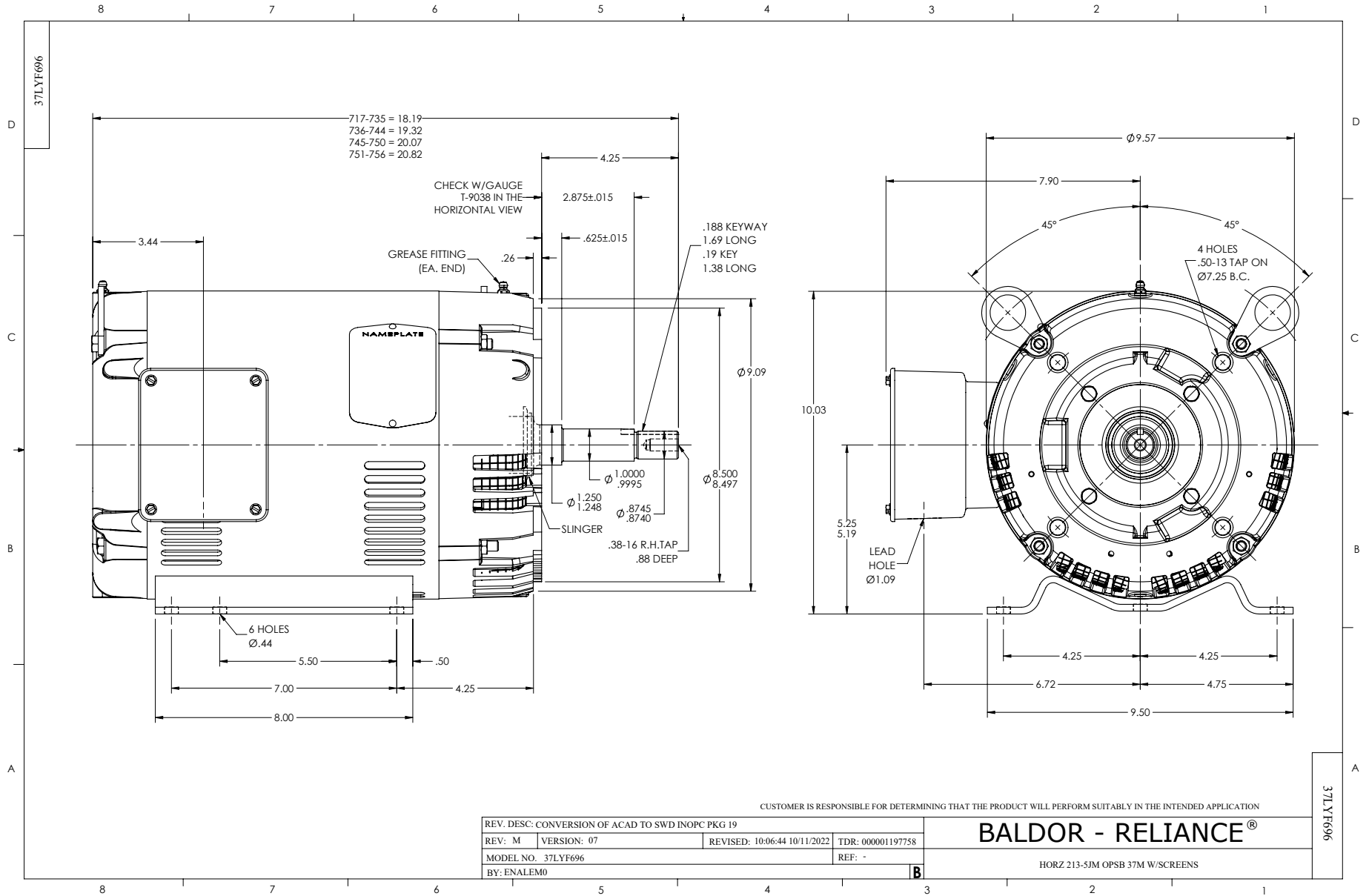
5 HP 3 PH 60 HZ 1160 RPM 460 V 3744M

Typical performance - not guaranteed values.

TORQUES (LB-FT): PO=77.9 PU=47.4 LR=54.8 LRA=53



7/8/2026 ACPERF, record # 53393



CD0005

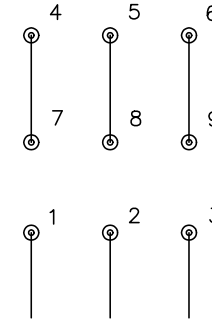


LOW VOLTAGE
(2Y)



LINE

HIGH VOLTAGE
(1Y)



LINE

NOTES:

1. INTERCHANGE ANY TWO LINE LEADS TO REVERSE ROTATION.
2. OPTIONAL THERMOSTATS ARE PROVIDED WHEN SPECIFIED.
3. ACTUAL NUMBER OF INTERNAL PARALLEL CIRCUITS MAY BE A MULTIPLE OF THOSE SHOWN ABOVE.
4. LEAD COLORS ARE OPTIONAL. LEADS MUST ALWAYS BE NUMBERED AS SHOWN.

CD0005

REV. DESC: REVISE TO SHOW OPTIONAL COLORS			
REV. LTR: E	BY: JLP	REVISED: 01/19/99 10:15	TDR: 0171435
S00000		FILE: AAA00005140	MDL: -
		MTL: -	

BALDOR ELECTRIC Co.

3PH, DV, 9 LEADS