

BALDOR • RELIANCE

Customer information packet

EJMM3219T-5

7.5HP, 3470RPM, 3PH, 60HZ, 184JM, 3632M, OPSB

Class - None

Division - Not Applicable

Specifications

Enclosure	OPSB
Frame	184JM
Frame Material	Steel
Frequency	60.00 Hz
Haz Area Class and Group	None
Haz Area Division	Not Applicable
Motor Letter Type	Three Phase
Output @ Frequency	7.500 HP @ 60 HZ
Phase	3
Synchronous Speed @ Frequency	3600 RPM @ 60 HZ
Voltage @ Frequency	575.0 V @ 60 HZ
Agency Approvals	CSA EEV CSA UR
Ambient Temperature	40 °C
Auxillary Box	No Auxillary Box
Auxillary Box Lead Termination	None
Base Indicator	Rigid
Bearing Grease Type	Polyrex EM (-20F +300F)
Blower	None
Current @ Voltage	6.900 A @ 575.0 V
Design Code	A
Drip Cover	No Drip Cover
Duty Rating	CONT
Efficiency @ 100% Load	88.5 %
Electrically Isolated Bearing	Not Electrically Isolated
Feedback Device	NO FEEDBACK
Front Face Code	Standard
Front Shaft Indicator	None
Heater Indicator	No Heater
High Voltage Full Load Amps	6.9 a
Insulation Class	F

Part detail

Revision	F
Type	AC
Mech. spec.	36H823
Base	
Status	PRD/A
Elec. spec.	36WGS515
Layout	36LYH823
Eff. date	05-01-2024
CD Diagram	CD0006
Poles	02
Leads	3#16
Proprietary	False
Created date	08-17-2015

Inverter Code	Inverter Ready
KVA Code	K
Lifting Lugs	No Lifting Lugs
Locked Bearing Indicator	Locked Bearing
Motor Lead Exit	Ko Box
Motor Lead Quantity/Wire Size	3 @ 16 AWG
Motor Lead Termination	Flying Leads
Motor Standards	NEMA
Motor Type	3632M
Mounting Arrangement	F1
Number of Poles	2
Overall Length	16.50 IN
Power Factor	92
Product Family	General Purpose
Pulley End Bearing Type	Ball
Pulley Face Code	C-Face
Pulley Shaft Indicator	Tapped & Key
Rodent Screen	Included
RoHS Status	ROHS COMPLIANT
Service Factor	1.15
Shaft Diameter	0.875 IN
Shaft Extension Location	Pulley End
Shaft Ground Indicator	No Shaft Grounding
Shaft Rotation	Reversible
Shaft Slinger Indicator	Shaft Slinger
Speed	3470 rpm
Speed Code	Single Speed
Starting Method	Direct on line
Thermal Device - Bearing	None
Thermal Device - Winding	None
Vibration Sensor Indicator	No Vibration Sensor
Winding Thermal 1	None
Winding Thermal 2	None

Nameplate

NP1259L									
CAT.NO.	EJMM3219T-5								
SPEC.	36H823S515G1								
HP	7.5								
VOLTS	575								
AMP	6.9								
RPM	3470								
FRAME	184JM	HZ	60	PH	3				
SER.F.	1.15	CODE	K	DES	A	CL	F		
NEMA-NOM-EFF	88.5	PF	92						
RATING	40C AMB-CONT								
CC	010A								
DE	6207	ODE	6205						
ENCL	OPSB	SN							

AC Induction Motor Performance Data

Record # 32598

Typical performance - not guaranteed values

Winding: 36WGS515-R002		Type: 3632M	Enclosure: OPSB
Nameplate Data		575 V, 60 Hz: Single Voltage Motor	
Rated Output (HP)	7.5	Full Load Torque	11.3 LB-FT
Volts	575	Start Configuration	direct on line
Full Load Amps	6.9	Breakdown Torque	54.1 LB-FT
R.P.M.	3470	Pull-up Torque	36.1 LB-FT
Hz	60 Phase	Locked-rotor Torque	41.6 LB-FT
NEMA Design Code	A KVA Code	Starting Current	67.6 A
Service Factor (S.F.)	1.15	No-load Current	2.3 A
NEMA Nom. Eff.	88.5 Power Factor	Line-line Res. @ 25°C	2.53 Ω
Rating - Duty	40C AMB-CONT	Temp. Rise @ Rated Load	43°C
S.F. Amps		Temp. Rise @ S.F. Load	53°C
		Locked-rotor Power Factor	47
		Rotor inertia	0.143 LB-FT ²

Load Characteristics 575 V, 60 Hz, 7.5 HP

% of Rated Load	25	50	75	100	125	150	S.F.
Power Factor	59	81	88	92	93	93	93
Efficiency	82.4	88.3	89.5	89.3	88.3	86.2	88.7
Speed	3571	3542	3512	3477	3441	3401	3455
Line amperes	2.84	3.91	5.31	6.85	8.51	10.5	7.85

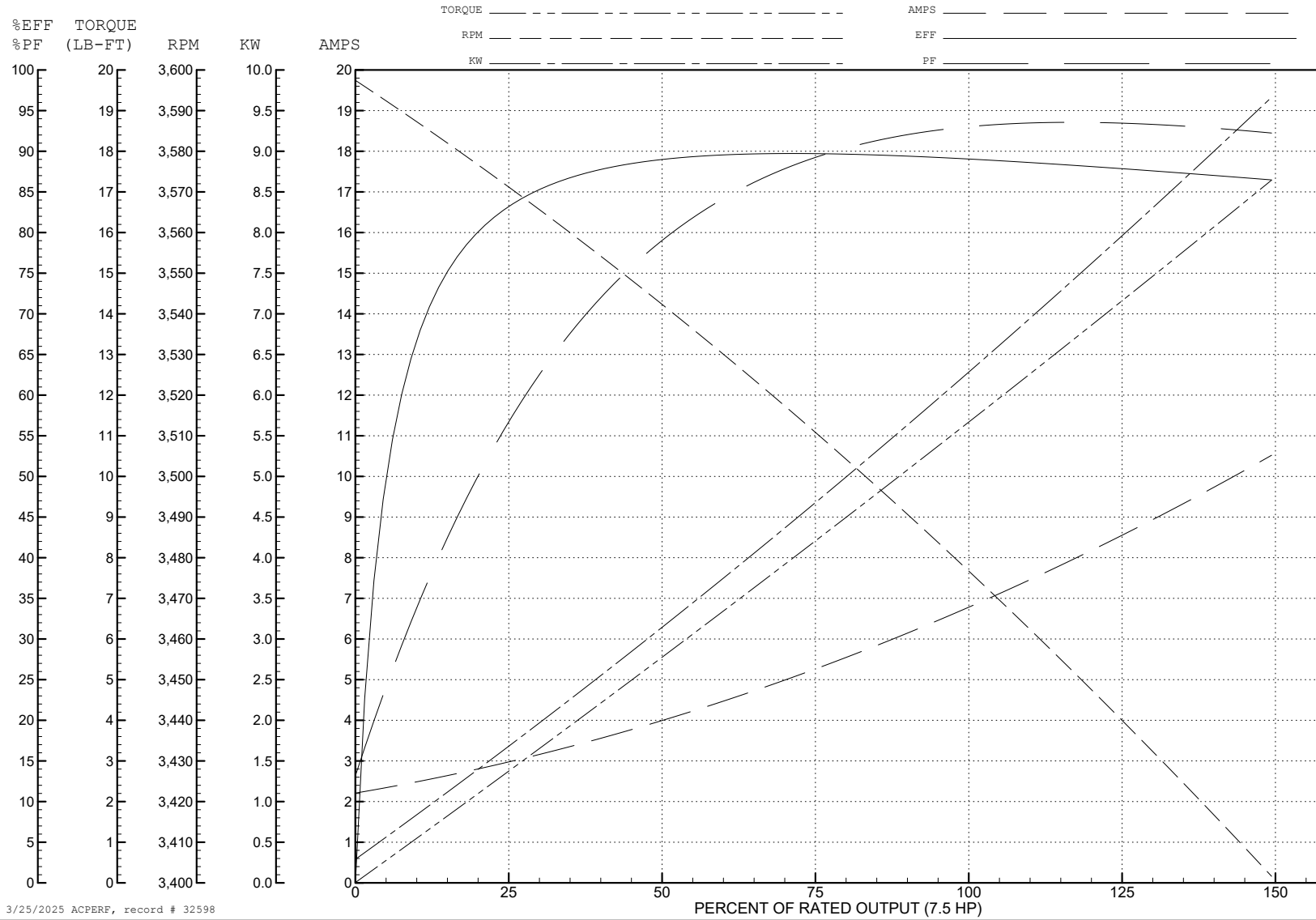
ABB Motors and Mechanical Inc.

WINDING # 36WGS515

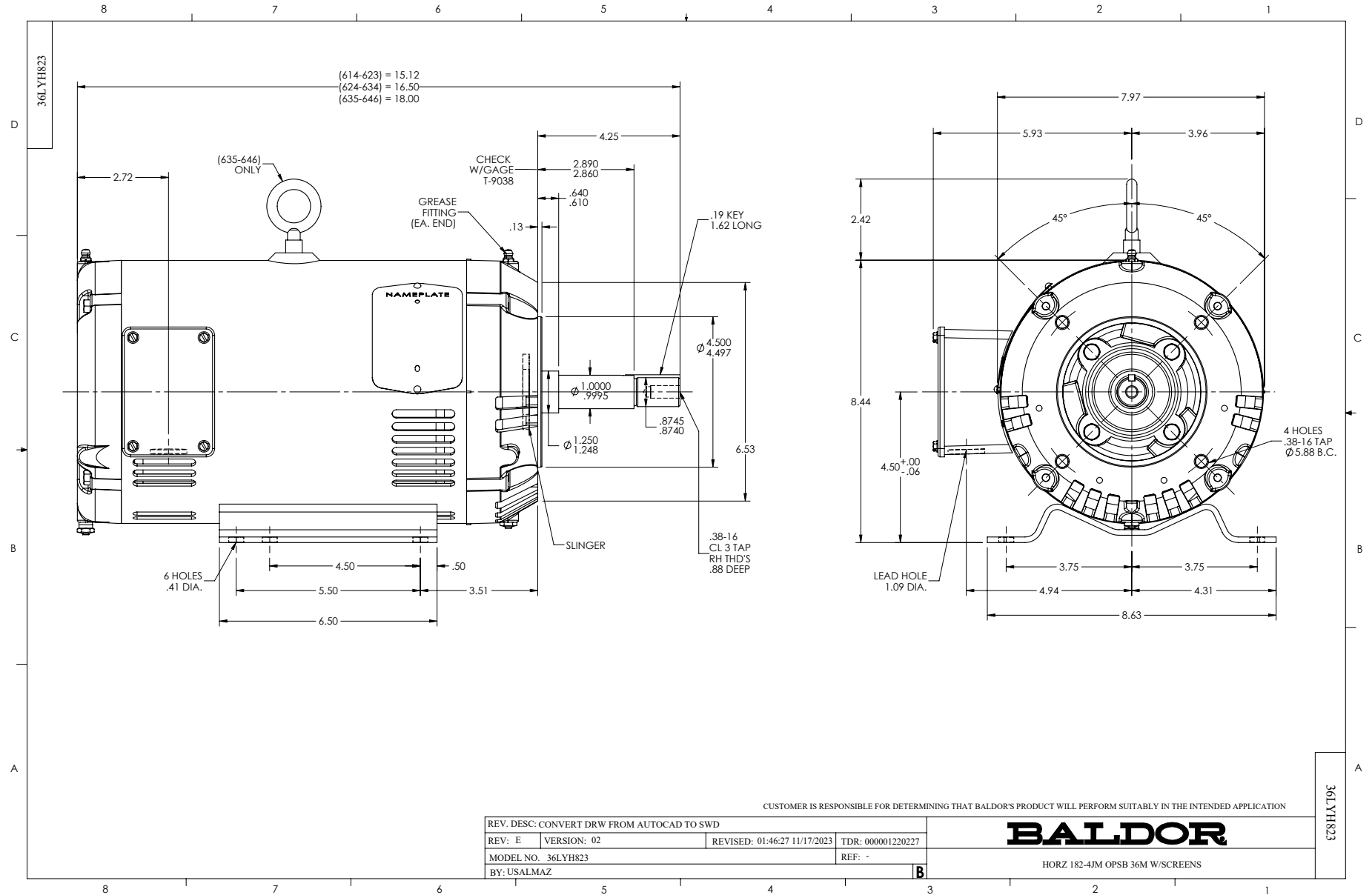
Typical performance - not guaranteed values.

7.5 HP 3 PH 60 HZ 3470 RPM 575 V 3632M

TORQUES (LB-FT): PO=54.1 PU=36.1 LR=41.6 LRA=67.6



3/25/2025 ACPERF, record # 32598



CD0006



NOTES:

1. THREE LEAD MOTOR MAY BE EITHER WYE CONNECTED OR DELTA CONNECTED.
2. INTERCHANGE ANY TWO LINE LEADS TO REVERSE ROTATION.
3. OPTIONAL THERMOSTATS ARE PROVIDED WHEN SPECIFIED.
4. ACTUAL NUMBER OF INTERNAL PARALLEL CIRCUITS MAY VARY.
5. LEAD COLORS ARE OPTIONAL. LEADS MUST BE NUMBERED AS SHOWN.

CD0006

REV. DESC: ADD CLASS CONN00000007		
REV. LTR: E	VERSION: 01	TDR: 000001099922
FILE: \AAA\00005\141	REVISED: 10:24:49 02/19/2019	BY: ENBRIRO
MTL: -		© □

BALDOR - RELIANCE®

3PH, SV, 3 LEADS, WYE OR DELTA CONNECTED

SH 1 of 1