



---

# Customer information packet

## EJMM3218T-G

5HP, 1750RPM, 3PH, 60HZ, 184JM, 3640M, OPSB, F1

Class - None

Division - Not Applicable

## Specifications

Enclosure	OPSB
Frame	184JM
Frame Material	Steel
Frequency	60.00 Hz
Haz Area Class and Group	None
Haz Area Division	Not Applicable
Motor Letter Type	Three Phase
Output @ Frequency	5.000 HP @ 60 HZ
Phase	3
Synchronous Speed @ Frequency	1800 RPM @ 60 HZ
Voltage @ Frequency	460.0 V @ 60 HZ 230.0 V @ 60 HZ
Agency Approvals	CSA CSA EEV UR
Ambient Temperature	40 °C
Auxillary Box	No Auxillary Box
Auxillary Box Lead Termination	None
Base Indicator	Rigid
Bearing Grease Type	Polyrex EM (-20F +300F)
Blower	None
Current @ Voltage	14.000 A @ 208.0 V 6.600 A @ 460.0 V 13.200 A @ 230.0 V
Design Code	B
Drip Cover	No Drip Cover
Duty Rating	CONT
Efficiency @ 100% Load	89.5 %
Electrically Isolated Bearing	Not Electrically Isolated
Feedback Device	NO FEEDBACK
Front Face Code	Standard
Front Shaft Indicator	None

## Part detail

Revision	U
Type	AC
Mech. spec.	36T140
Base	
Status	PRD/A
Elec. spec.	36WGS270
Layout	36LYT140
Eff. date	09-30-2024
CD Diagram	CD0005
Poles	04
Leads	9#16
Proprietary	False
Created date	12-08-2010

Heater Indicator	No Heater
High Voltage Full Load Amps	6.6 a
Insulation Class	H
Inverter Code	Inverter Ready
KVA Code	J
Lifting Lugs	Standard Lifting Lugs
Locked Bearing Indicator	Locked Bearing
Motor Lead Exit	Ko Box
Motor Lead Quantity/Wire Size	9 @ 16 AWG
Motor Lead Termination	Flying Leads
Motor Standards	NEMA
Motor Type	3640M
Mounting Arrangement	F1
Number of Poles	4
Overall Length	18.00 IN
Power Factor	80
Product Family	General Purpose
Pulley End Bearing Type	Ball
Pulley Face Code	C-Face
Pulley Shaft Indicator	Tapped & Key
Rodent Screen	Included
RoHS Status	ROHS COMPLIANT
Service Factor	1.15
Shaft Diameter	0.875 IN
Shaft Extension Location	Pulley End
Shaft Ground Indicator	No Shaft Grounding
Shaft Rotation	Reversible
Shaft Slinger Indicator	Shaft Slinger
Speed	1750 rpm
Speed Code	Single Speed
Starting Method	Direct on line
Thermal Device - Bearing	None
Thermal Device - Winding	None
Vibration Sensor Indicator	No Vibration Sensor

**Winding Thermal 1**

None

**Winding Thermal 2**

None

**Nameplate**

<b>NP3553LUA</b>									
<b>CAT.NO.</b>	EJMM3218T-G								
<b>SPEC.</b>	36T140S270G1								
<b>HP</b>	5								
<b>VOLTS</b>	230/460								
<b>AMPS</b>	13.2/6.6								
<b>RPM</b>	1750								
<b>FRAME</b>	184JM		<b>HZ</b>	60		<b>PH</b>	3		
<b>SF</b>	1.15	<b>CODE</b>	J	<b>DES</b>	B	<b>CLASS</b>	H		
<b>NEMA NOM. EFF</b>	89.5	<b>PF</b>	80						
<b>RATING</b>	40C AMB-CONT								
<b>CC</b>	010A								
<b>ENCL</b>	OPSB	<b>SN</b>							
<b>DE</b>	6207	<b>ODE</b>	6205						
<b>VPWM INVERTER READY</b>									
<b>CT30-60(2:1) VT3-60(20:1)</b>									
<b>USABLE AT</b>	50Hz 5HP 190/380V 15.6/7.8A							SF1.0	

**AC Induction Motor Performance Data**

Record # 36908

Typical performance - not guaranteed values

<b>Winding: 36WGS270-R002</b>		<b>Type: 3640M</b>		<b>Enclosure: OPSB</b>	
<b>Nameplate Data</b>			<b>460 V, 60 Hz: High Voltage Connection</b>		
<b>Rated Output (HP)</b>	5		<b>Full Load Torque</b>	15 LB-FT	
<b>Volts</b>	230/460		<b>Start Configuration</b>	direct on line	
<b>Full Load Amps</b>	13.2/6.6		<b>Breakdown Torque</b>	44.8 LB-FT	
<b>R.P.M.</b>	1750		<b>Pull-up Torque</b>	25.5 LB-FT	
<b>Hz</b>	<b>60 Phase</b>	3	<b>Locked-rotor Torque</b>	30.1 LB-FT	
<b>NEMA Design Code</b>	<b>B KVA Code</b>	J	<b>Starting Current</b>	44.8 A	
<b>Service Factor (S.F.)</b>	1.15		<b>No-load Current</b>	2.97 A	
<b>NEMA Nom. Eff.</b>	<b>89.5 Power Factor</b>	80	<b>Line-line Res. @ 25°C</b>	2.62 Ω	
<b>Rating - Duty</b>	40C AMB-CONT		<b>Temp. Rise @ Rated Load</b>	44°C	
<b>S.F. Amps</b>			<b>Temp. Rise @ S.F. Load</b>	54°C	
			<b>Locked-rotor Power Factor</b>	41	
			<b>Rotor inertia</b>	0.372 LB-FT <sup>2</sup>	

**Load Characteristics 460 V, 60 Hz, 5 HP**

<b>% of Rated Load</b>	<b>25</b>	<b>50</b>	<b>75</b>	<b>100</b>	<b>125</b>	<b>150</b>	<b>S.F.</b>
<b>Power Factor</b>	42	64	75	80	83	84	82
<b>Efficiency</b>	84.4	89.3	89.8	89.4	88.3	86.2	88.7
<b>Speed</b>	1789	1779	1767	1754	1740	1722	1746
<b>Line amperes</b>	3.33	4.14	5.26	6.59	8.05	9.68	7.47

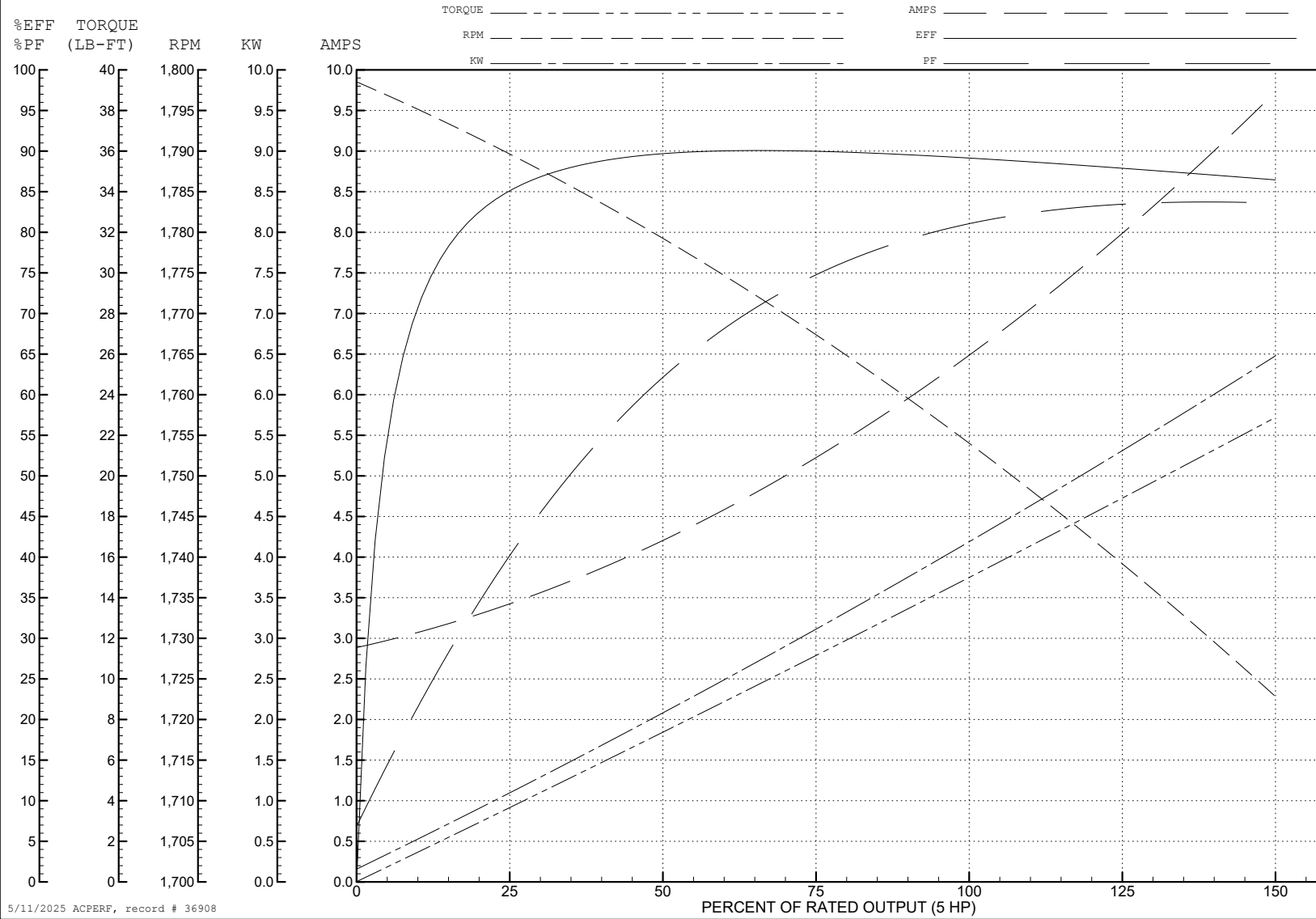
ABB Motors and Mechanical Inc.

WINDING # 36WGS270

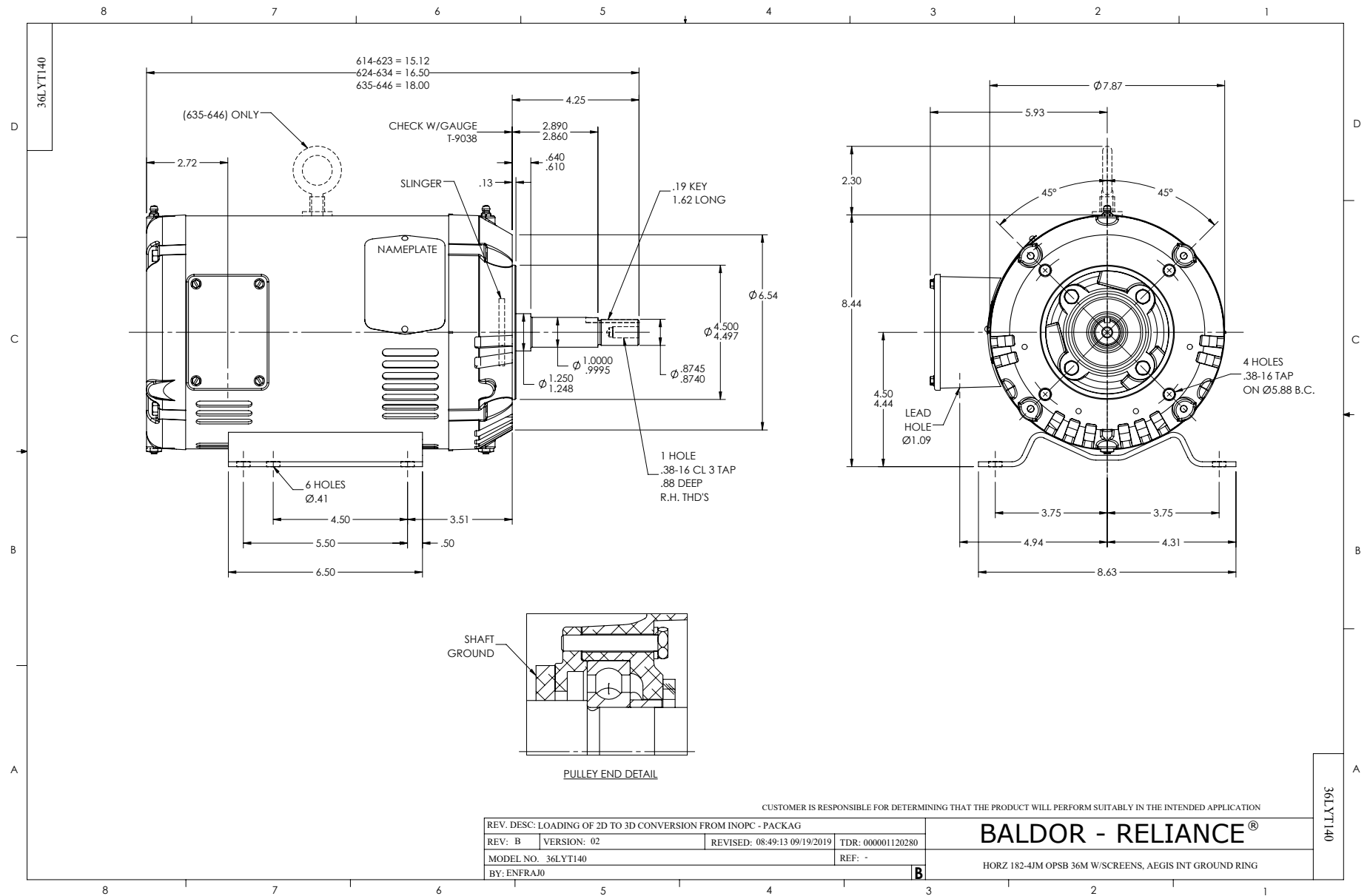
5 HP 3 PH 60 HZ 1750 RPM 460 V 3640M

Typical performance - not guaranteed values.

TORQUES (LB-FT): PO=44.8 PU=25.5 LR=30.1 LRA=44.8

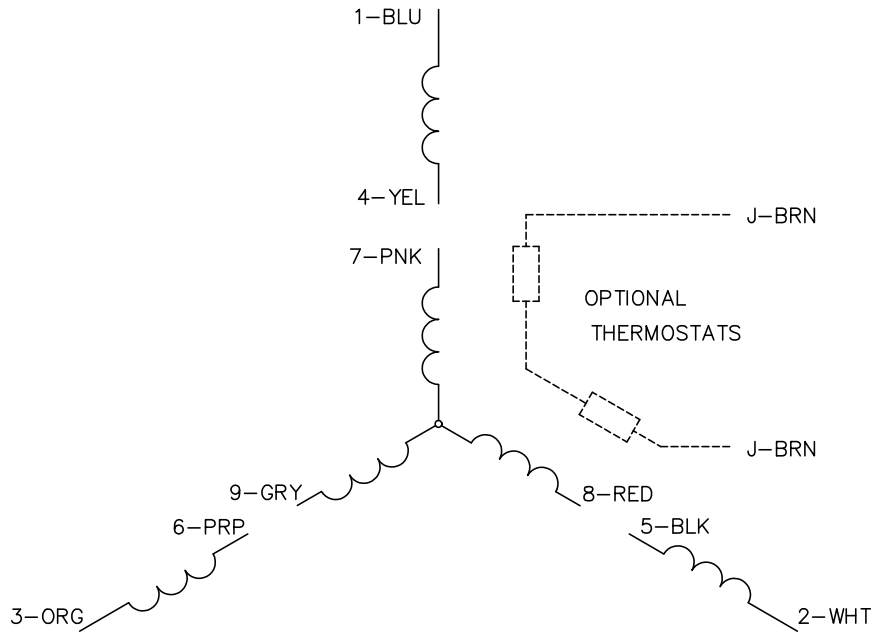


5/11/2025 ACPERF, record # 36908





CD0005



LOW VOLTAGE  
(2Y)



LINE

HIGH VOLTAGE  
(1Y)



LINE

NOTES:

1. INTERCHANGE ANY TWO LINE LEADS TO REVERSE ROTATION.
2. OPTIONAL THERMOSTATS ARE PROVIDED WHEN SPECIFIED.
3. ACTUAL NUMBER OF INTERNAL PARALLEL CIRCUITS MAY BE A MULTIPLE OF THOSE SHOWN ABOVE.
4. LEAD COLORS ARE OPTIONAL. LEADS MUST ALWAYS BE NUMBERED AS SHOWN.

CD0005

REV. DESC: REVISE TO SHOW OPTIONAL COLORS			
REV. LTR: E	BY: JLP	REVISED: 01/19/99 10:15	TDR: 0171435
S00000		FILE: AAA00005140	MDL: -
		MTL: -	

**BALDOR ELECTRIC Co.**

3PH, DV, 9 LEADS