

BALDOR • RELIANCE

Customer information packet

EJMM3212T

5HP, 3465RPM, 3PH, 60HZ, 182JM, 3622M, OPSB, F1

Class - None

Division - Not Applicable

Specifications

Enclosure	OPSB
Frame	182JM
Frame Material	Steel
Frequency	60.00 Hz
Haz Area Class and Group	None
Haz Area Division	Not Applicable
Motor Letter Type	Three Phase
Output @ Frequency	5.000 HP @ 60 HZ
Phase	3
Synchronous Speed @ Frequency	3600 RPM @ 60 HZ
Voltage @ Frequency	230.0 V @ 60 HZ 460.0 V @ 60 HZ
Agency Approvals	CSA CSA EEV NEMA PREMIUM UR
Ambient Temperature	40 °C
Auxillary Box	No Auxillary Box
Auxillary Box Lead Termination	None
Base Indicator	Rigid
Bearing Grease Type	Polyrex EM (-20F +300F)
Blower	None
Current @ Voltage	5.900 A @ 460.0 V 12.400 A @ 208.0 V 11.800 A @ 230.0 V
Design Code	A
Drip Cover	No Drip Cover
Duty Rating	CONT
Efficiency @ 100% Load	86.5 %
Electrically Isolated Bearing	Not Electrically Isolated
Feedback Device	NO FEEDBACK
Front Shaft Indicator	None

Part detail

Revision	D
Type	AC
Mech. spec.	36G687
Base	
Status	PRD/A
Elec. spec.	36WGQ033
Layout	36LYG687
Eff. date	07-12-2024
CD Diagram	CD0005
Poles	02
Leads	9#16
Proprietary	False
Created date	12-09-2020

Heater Indicator	No Heater
High Voltage Full Load Amps	5.9 a
Insulation Class	F
Inverter Code	Inverter Ready
KVA Code	J
Lifting Lugs	No Lifting Lugs
Locked Bearing Indicator	Locked Bearing
Motor Lead Quantity/Wire Size	9 @ 16 AWG
Motor Lead Termination	Flying Leads
Motor Standards	NEMA
Motor Type	3622M
Mounting Arrangement	F1
Number of Poles	2
Overall Length	15.12 IN
Power Factor	91
Product Family	General Purpose
Pulley End Bearing Type	Ball
Pulley Face Code	C-Face
Pulley Shaft Indicator	Tapped & Key
Rodent Screen	Included
RoHS Status	ROHS COMPLIANT
Service Factor	1.15
Shaft Diameter	0.875 IN
Shaft Ground Indicator	No Shaft Grounding
Shaft Rotation	Reversible
Shaft Slinger Indicator	Shaft Slinger
Speed	3465 rpm
Speed Code	Single Speed
Starting Method	Direct on line
Thermal Device - Bearing	None
Thermal Device - Winding	None
Vibration Sensor Indicator	No Vibration Sensor
Winding Thermal 1	None
Winding Thermal 2	None

Nameplate

NP3553LUA										
CAT.NO.	EJMM3212T									
SPEC.	36G687Q033G1									
HP	5									
VOLTS	230/460									
AMPS	11.8/5.9									
RPM	3465									
FRAME	182JM		HZ	60		PH	3			
SF	1.15	CODE	J	DES	A	CLASS	F			
NEMA NOM. EFF	86.5	PF	91							
RATING	40C AMB-CONT									
CC	010A									
ENCL	OPSB	SN								
DE	6207	ODE	6205							
VPWM INVERTER READY										
CT30-60(2:1) VT3-60(20:1)										
USABLE AT	50HZ 5HP 190/380V 15.2/7.6A							SF1.0		

AC Induction Motor Performance Data

Record # 85737

Preliminary Data Sheet

Winding: 36WGQ033-RXXX		Type: 3622M	Enclosure: OPSB	
Nameplate Data			460 V, 60 Hz: High Voltage Connection	
Rated Output (HP)	5	Full Load Torque	7.57 LB-FT	
Volts	230/460	Start Configuration	direct on line	
Full Load Amps	11.8/5.9	Breakdown Torque	28.9 LB-FT	
R.P.M.	3465	Pull-up Torque	20.2 LB-FT	
Hz	60 Phase	Locked-rotor Torque	22.2 LB-FT	
NEMA Design Code	A KVA Code	Starting Current	46.1 A	
Service Factor (S.F.)	1.15	No-load Current	2 A	
NEMA Nom. Eff.	86.5 Power Factor	Line-line Res. @ 25°C	3.44 Ω	
Rating - Duty	40C AMB-CONT	Temp. Rise @ Rated Load	36°C	
S.F. Amps	13.4/6.7	Temp. Rise @ S.F. Load	49°C	
		Locked-rotor Power Factor	65.2	
		Rotor inertia	0.0988 lb-ft ²	

Load Characteristics 460 V, 60 Hz, 5 HP

% of Rated Load	25	50	75	100	125	150	S.F.
Power Factor	57	78	87	90	92	93	92
Efficiency	85.7	89.5	89.4	88.1	86.3	83.9	87
Speed	3568	3538	3504	3467	3425	3379	3435
Line amperes	2.44	3.38	4.56	5.89	7.38	9.02	6.76

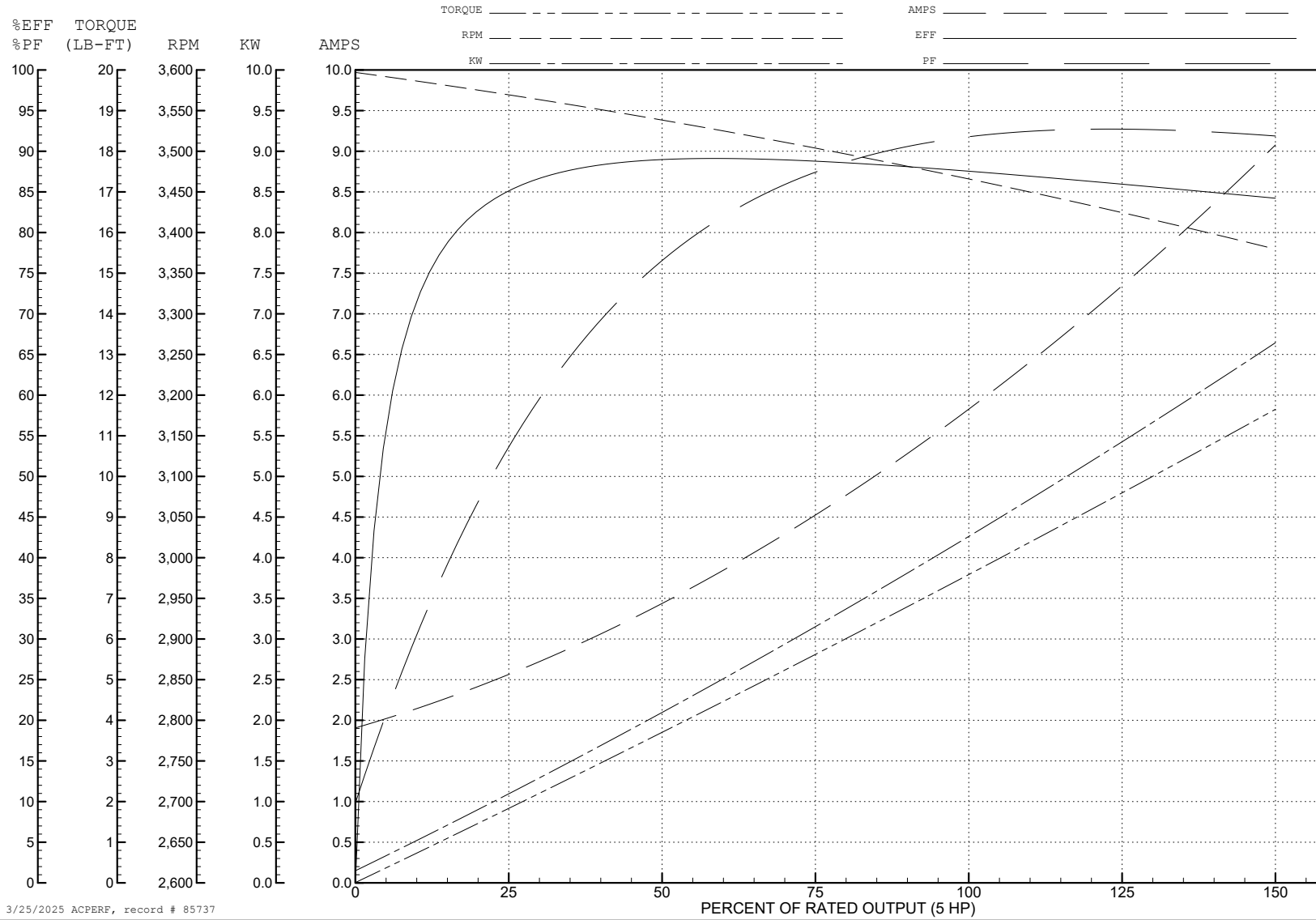
ABB Motors and Mechanical Inc.

WINDING # 36WGQ033

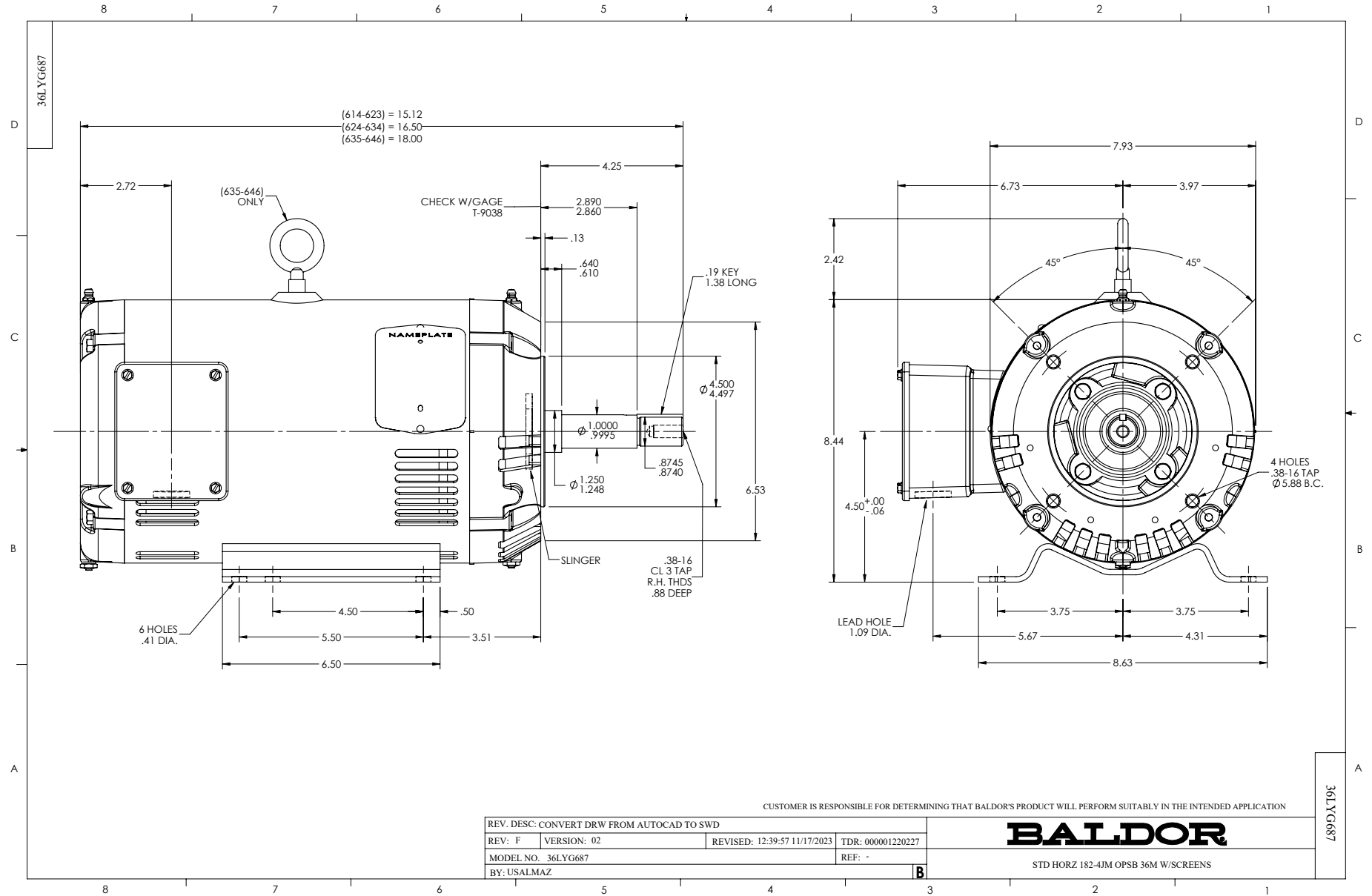
5 HP 3 PH 60 HZ 3465 RPM 460 V 3622M

Typical performance - not guaranteed values.

TORQUES (LB-FT): PO=28.9 PU=20.2 LR=22.2 LRA=46.1



3/25/2025 ACPERF, record # 85737



CD0005



LOW VOLTAGE
(2Y)



LINE

HIGH VOLTAGE
(1Y)



LINE

NOTES:

1. INTERCHANGE ANY TWO LINE LEADS TO REVERSE ROTATION.
2. OPTIONAL THERMOSTATS ARE PROVIDED WHEN SPECIFIED.
3. ACTUAL NUMBER OF INTERNAL PARALLEL CIRCUITS MAY BE A MULTIPLE OF THOSE SHOWN ABOVE.
4. LEAD COLORS ARE OPTIONAL. LEADS MUST ALWAYS BE NUMBERED AS SHOWN.

CD0005

REV. DESC: REVISE TO SHOW OPTIONAL COLORS			
REV. LTR: E	BY: JLP	REVISED: 01/19/99 10:15	TDR: 0171435
S00000		FILE: AAA00005140	MDL: -
		MTL: -	

BALDOR ELECTRIC Co.

3PH, DV, 9 LEADS