

**BALDOR • RELIANCE**

---

# Customer information packet

## EJMM3120T

1.5HP, 3490RPM, 3PH, 60HZ, 143JM, 3518M, OPSB

Class - None

Division - Not Applicable

## Specifications

Enclosure	OPSB
Frame	143JM
Frame Material	Steel
Frequency	60.00 Hz
Haz Area Class and Group	None
Haz Area Division	Not Applicable
Motor Letter Type	Three Phase
Output @ Frequency	1.500 HP @ 60 HZ
Phase	3
Synchronous Speed @ Frequency	3600 RPM @ 60 HZ
Voltage @ Frequency	230.0 V @ 60 HZ 460.0 V @ 60 HZ
Agency Approvals	CSA CSA EEV NEMA PREMIUM UR
Ambient Temperature	40 °C
Auxillary Box	No Auxillary Box
Auxillary Box Lead Termination	None
Base Indicator	Rigid
Bearing Grease Type	Polyrex EM (-20F +300F)
Blower	None
Current @ Voltage	4.200 A @ 208.0 V 4.000 A @ 230.0 V 2.000 A @ 460.0 V
Design Code	B
Drip Cover	No Drip Cover
Duty Rating	CONT
Efficiency @ 100% Load	84.0 %
Electrically Isolated Bearing	Not Electrically Isolated
Feedback Device	NO FEEDBACK
Front Face Code	Standard

## Part detail

Revision	U
Type	AC
Mech. spec.	35N833
Base	
Status	PRD/A
Elec. spec.	35WGM761
Layout	35LYN833
Eff. date	06-11-2024
CD Diagram	CD0005
Poles	02
Leads	9#18
Proprietary	False
Created date	05-28-2015

Front Shaft Indicator	None
Heater Indicator	No Heater
High Voltage Full Load Amps	2.0 a
Insulation Class	F
Inverter Code	Inverter Ready
KVA Code	L
Lifting Lugs	No Lifting Lugs
Locked Bearing Indicator	Locked Bearing
Motor Lead Exit	Ko Box
Motor Lead Quantity/Wire Size	9 @ 18 AWG
Motor Lead Termination	Flying Leads
Motor Standards	NEMA
Motor Type	3518M
Mounting Arrangement	F1
Number of Poles	2
Overall Length	13.75 IN
Power Factor	83
Product Family	General Purpose
Pulley End Bearing Type	Ball
Pulley Face Code	C-Face
Pulley Shaft Indicator	Tapped & Key
Rodent Screen	Included
RoHS Status	ROHS COMPLIANT
Service Factor	1.15
Shaft Diameter	0.875 IN
Shaft Extension Location	Pulley End
Shaft Ground Indicator	No Shaft Grounding
Shaft Rotation	Reversible
Shaft Slinger Indicator	Shaft Slinger
Speed	3490 rpm
Speed Code	Single Speed
Starting Method	Direct on line
Thermal Device - Bearing	None
Thermal Device - Winding	None

<b>Vibration Sensor Indicator</b>	<b>No Vibration Sensor</b>
<b>Winding Thermal 1</b>	<b>None</b>
<b>Winding Thermal 2</b>	<b>None</b>

**Nameplate**

<b>NP3553LUA</b>									
<b>CAT.NO.</b>	EJMM3120T								
<b>SPEC.</b>	35N833M761G2								
<b>HP</b>	1.5								
<b>VOLTS</b>	230/460								
<b>AMPS</b>	4/2								
<b>RPM</b>	3490								
<b>FRAME</b>	143JM		<b>HZ</b>	60		<b>PH</b>	3		
<b>SF</b>	1.15	<b>CODE</b>	L	<b>DES</b>	B	<b>CLASS</b>	F		
<b>NEMA NOM. EFF</b>	84	<b>PF</b>	83						
<b>RATING</b>	40C AMB-CONT								
<b>CC</b>	010A								
<b>ENCL</b>	OPSB	<b>SN</b>							
<b>DE</b>	6206	<b>ODE</b>	6203						
<b>VPWM INVERTER READY</b>									
<b>CT30-60(2:1) VT3-60(20:1)</b>									
<b>USABLE AT</b>	50HZ 1.5HP 190/380V 4.6/2.3A							SF1.0	

**AC Induction Motor Performance Data**

Record # 53126

Typical performance - not guaranteed values

Winding: 35WGM761-R007		Type: 3518M	Enclosure: OPSB		
<b>Nameplate Data</b>			<b>460 V, 60 Hz: High Voltage Connection</b>		
Rated Output (HP)	1.5	Full Load Torque	2.26 LB-FT		
Volts	230/460	Start Configuration	direct on line		
Full Load Amps	4/2	Breakdown Torque	9.32 LB-FT		
R.P.M.	3490	Pull-up Torque	4.18 LB-FT		
Hz	60	Phase	3	Locked-rotor Torque	6.79 LB-FT
NEMA Design Code	B	KVA Code	L	Starting Current	17.2 A
Service Factor (S.F.)	1.15	No-load Current	1.05 A		
NEMA Nom. Eff.	84	Power Factor	83	Line-line Res. @ 25°C	12.7 Ω
Rating - Duty	40C AMB-CONT		Temp. Rise @ Rated Load	24°C	
S.F. Amps			Temp. Rise @ S.F. Load	28°C	
			Locked-rotor Power Factor	64	
			Rotor inertia	0.0493 lb-ft <sup>2</sup>	

**Load Characteristics 460 V, 60 Hz, 1.5 HP**

% of Rated Load	25	50	75	100	125	150	S.F.
Power Factor	43	64	77	83	87	89	85
Efficiency	73.9	82.4	85.1	85.1	84.3	83.1	84.6
Speed	3574	3550	3524	3496	3465	3430	3477
Line amperes	1.14	1.35	1.63	1.99	2.41	2.84	2.24

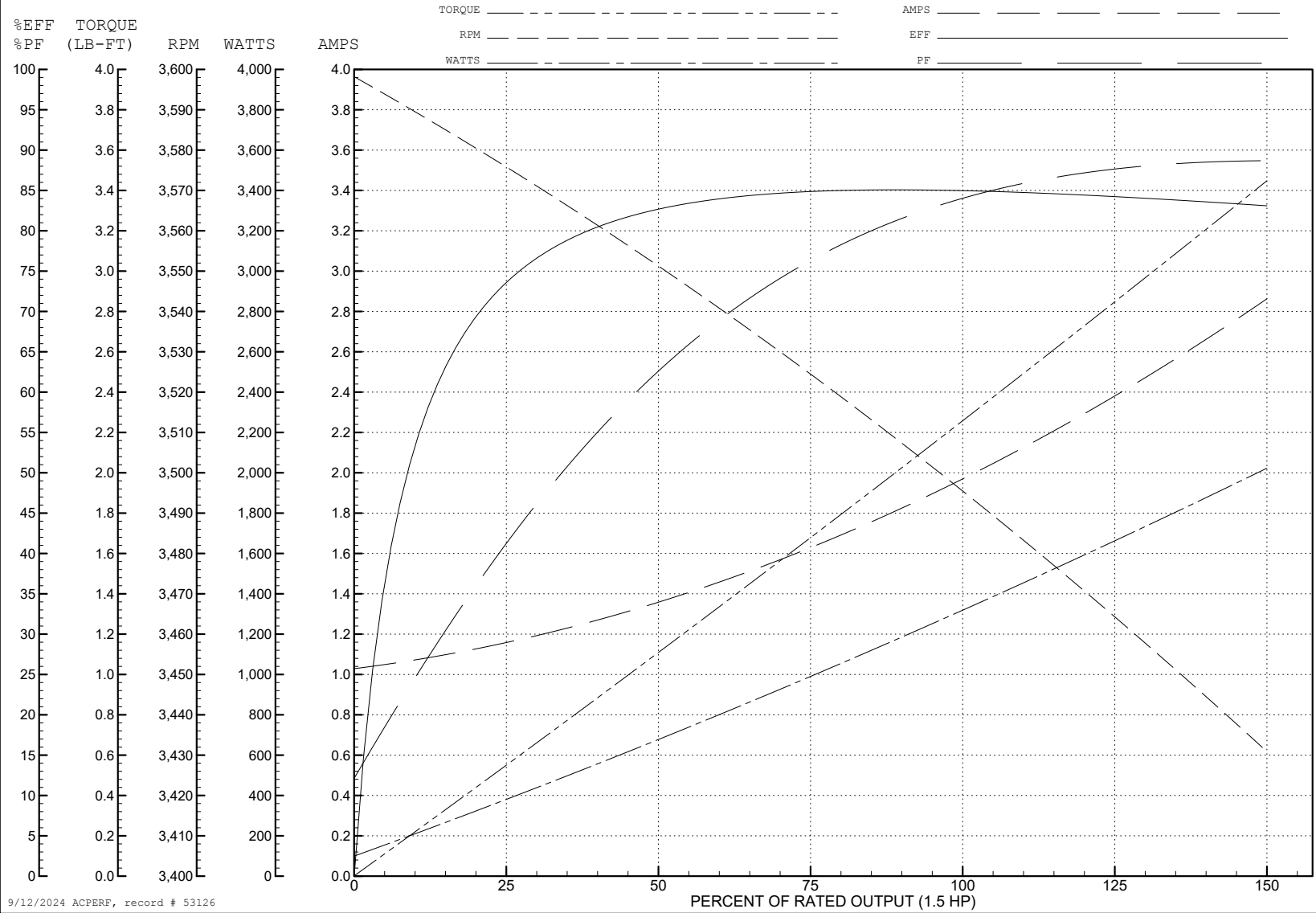
ABB Motors and Mechanical Inc.

WINDING # 35WGM761

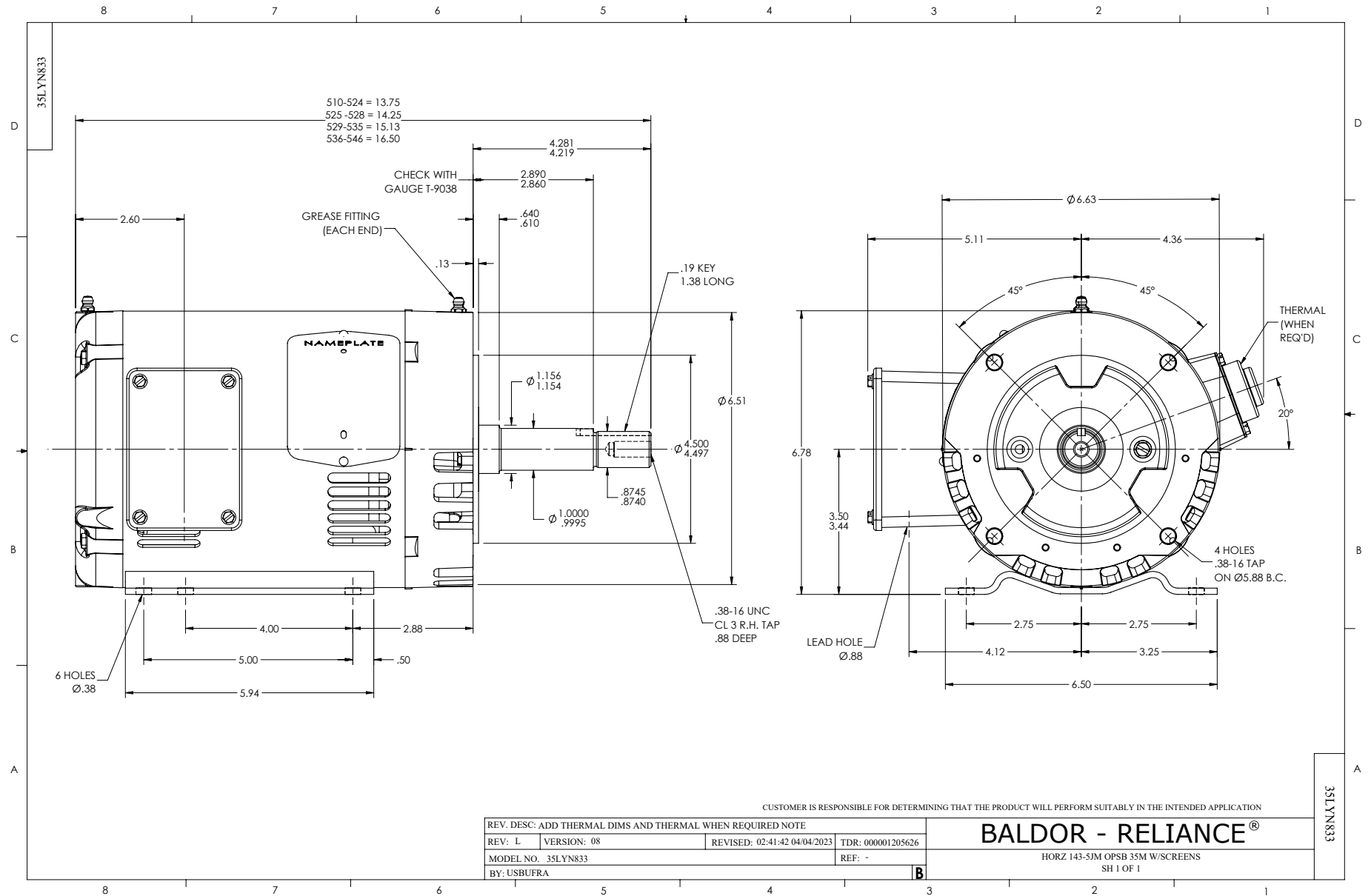
Typical performance - not guaranteed values.

1.5 HP 3 PH 60 HZ 3490 RPM 460 V 3518M

TORQUES (LB-FT): PO=9.32 PU=4.18 LR=6.79 LRA=17.2

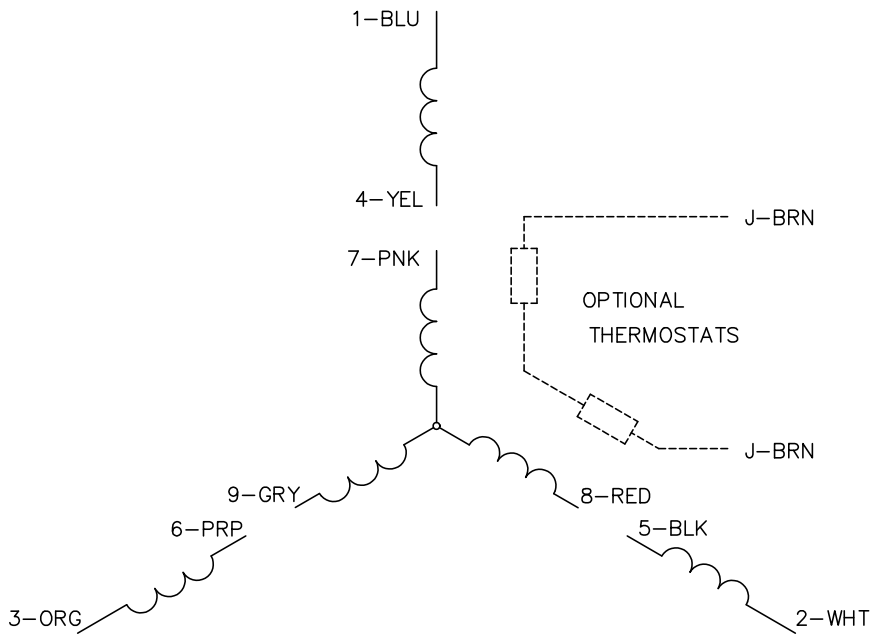


9/12/2024 ACPERF, record # 53126

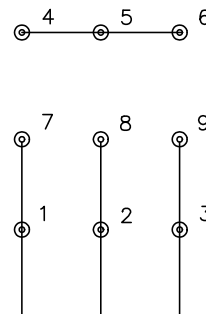




CD0005

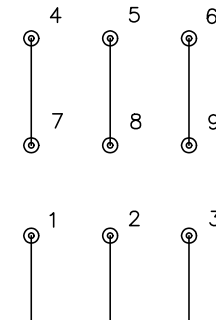


LOW VOLTAGE  
(2Y)



LINE

HIGH VOLTAGE  
(1Y)



LINE

NOTES:

1. INTERCHANGE ANY TWO LINE LEADS TO REVERSE ROTATION.
2. OPTIONAL THERMOSTATS ARE PROVIDED WHEN SPECIFIED.
3. ACTUAL NUMBER OF INTERNAL PARALLEL CIRCUITS MAY BE A MULTIPLE OF THOSE SHOWN ABOVE.
4. LEAD COLORS ARE OPTIONAL. LEADS MUST ALWAYS BE NUMBERED AS SHOWN.

CD0005

REV. DESC: REVISE TO SHOW OPTIONAL COLORS

REV. LTR: E BY: JLP REVISED: 01/19/99 10:15 TDR: 0171435

900000

FILE: AAA00005140

MDL: -

MTL: -

**BALDOR ELECTRIC Co.**

3PH, DV, 9 LEADS