

ABB BALDOR RELIANCE III

Customer information packet EJMM2538T

40HP, 3510RPM, 3PH, 60HZ, 286JM, 3956M, OPSB, F

Class -

Division - Not Applicable

Specifications

| | |
|---------------------------------------|--|
| Enclosure | OPSB |
| Frame | 286JM |
| Frame Material | Steel |
| Frequency | 60.00 Hz |
| Haz Area Division | Not Applicable |
| Motor Letter Type | Three Phase |
| Output @ Frequency | 40.000 HP @ 60 HZ |
| Phase | 3 |
| Synchronous Speed @ Frequency | 3600 RPM @ 60 HZ |
| Voltage @ Frequency | 460.0 V @ 60 HZ 230.0 V @ 60 HZ |
| Agency Approvals | CSA EEV UR CSA |
| Ambient Temperature | 40 °C |
| Auxiliary Box | NO AUXILLARY BOX |
| Auxiliary Box Lead Termination | None |
| Base Indicator | Rigid |
| Bearing Grease Type | Polyrex EM (-20F +300F) |
| Blower | None |
| Current @ Voltage | 45.000 A @ 460.0 V 90.000 A @ 230.0 V 99.000 A @ 208.0 V |
| Design Code | A |
| Drip Cover | No Drip Cover |
| Duty Rating | CONT |
| Efficiency @ 100% Load | 92.4 % |
| Electrically Isolated Bearing | Not Electrically Isolated |
| Feedback Device | NO FEEDBACK |
| Front Face Code | Standard |
| Front Shaft Indicator | None |
| Heater Indicator | No Heater |

Part Detail

| | |
|---------------------|------------|
| Revision | W |
| Type | AC |
| Mech. spec. | 39E312 |
| Base | |
| Status | PRD/A |
| Elec. spec. | 39WGX287 |
| Layout | 39LYE312 |
| Eff. date | 06-26-2024 |
| CD Diagram | CD0180 |
| Poles | 02 |
| Leads | 9#8 |
| Proprietary | False |
| Created date | 06-22-2009 |

| | |
|-------------------------------|-----------------------|
| High Voltage Full Load Amps | 45.0 a |
| Insulation Class | F |
| Inverter Code | Inverter Ready |
| KVA Code | H |
| Lifting Lugs | Standard Lifting Lugs |
| Locked Bearing Indicator | Locked Bearing |
| Motor Lead Exit | Ko Box |
| Motor Lead Quantity/Wire Size | 9 @ 8 AWG |
| Motor Lead Termination | Flying Leads |
| Motor Standards | NEMA |
| Motor Type | 3956M |
| Mounting Arrangement | F1 |
| Number of Poles | 2 |
| Overall Length | 26.56 IN |
| Power Factor | 90 |
| Product Family | General Purpose |
| Pulley End Bearing Type | Ball |
| Pulley Face Code | C-Face |
| Pulley Shaft Indicator | Tapped & Key |
| Rodent Screen | Included |
| Service Factor | 1.15 |
| Shaft Diameter | 1.375 IN |
| Shaft Extension Location | Pulley End |
| Shaft Ground Indicator | No Shaft Grounding |
| Shaft Rotation | Reversible |
| Shaft Slinger Indicator | Shaft Slinger |
| Speed | 3510 rpm |
| Speed Code | Single Speed |
| Starting Method | Direct on line |
| Thermal Device - Bearing | None |
| Thermal Device - Winding | None |
| Vibration Sensor Indicator | No Vibration Sensor |
| Winding Thermal 1 | None |
| Winding Thermal 2 | None |

Nameplate

| NP2138LUA | | | | | | | | | |
|---------------------|----------------------------|-----------------|---------------|----------------|-------|---------------|------------------|------|--|
| CAT.NO. | EJMM2538T | | P/N | | | | ENCLOSURE | OPSB | |
| SPEC. | 39E312X287 | CC | 010A | FRAME | 286JM | S/N | | | |
| HP | 40 | CLASS | F | HZ | 60 | | | | |
| RPM | 3510 | PH | 3 | DES | A | | | | |
| VOLT | 230/460 | KVA-CODE | H | ODE BRG | 6208 | DE BRG | 6312 | | |
| AMP | 90/45 | | | | | | | | |
| RATING | 40C AMB-CONT | | GREASE | POLYREX EM | | | | | |
| NEMA-NOM-EFF | 92.4 | PF | 90 | SER.F. | 1.15 | | | | |
| | 50HZ 40HP 190/380V 110/55A | | | | SF1.0 | | | | |
| HTR-VOLTS | HTR-AMPS | | | | | | | | |

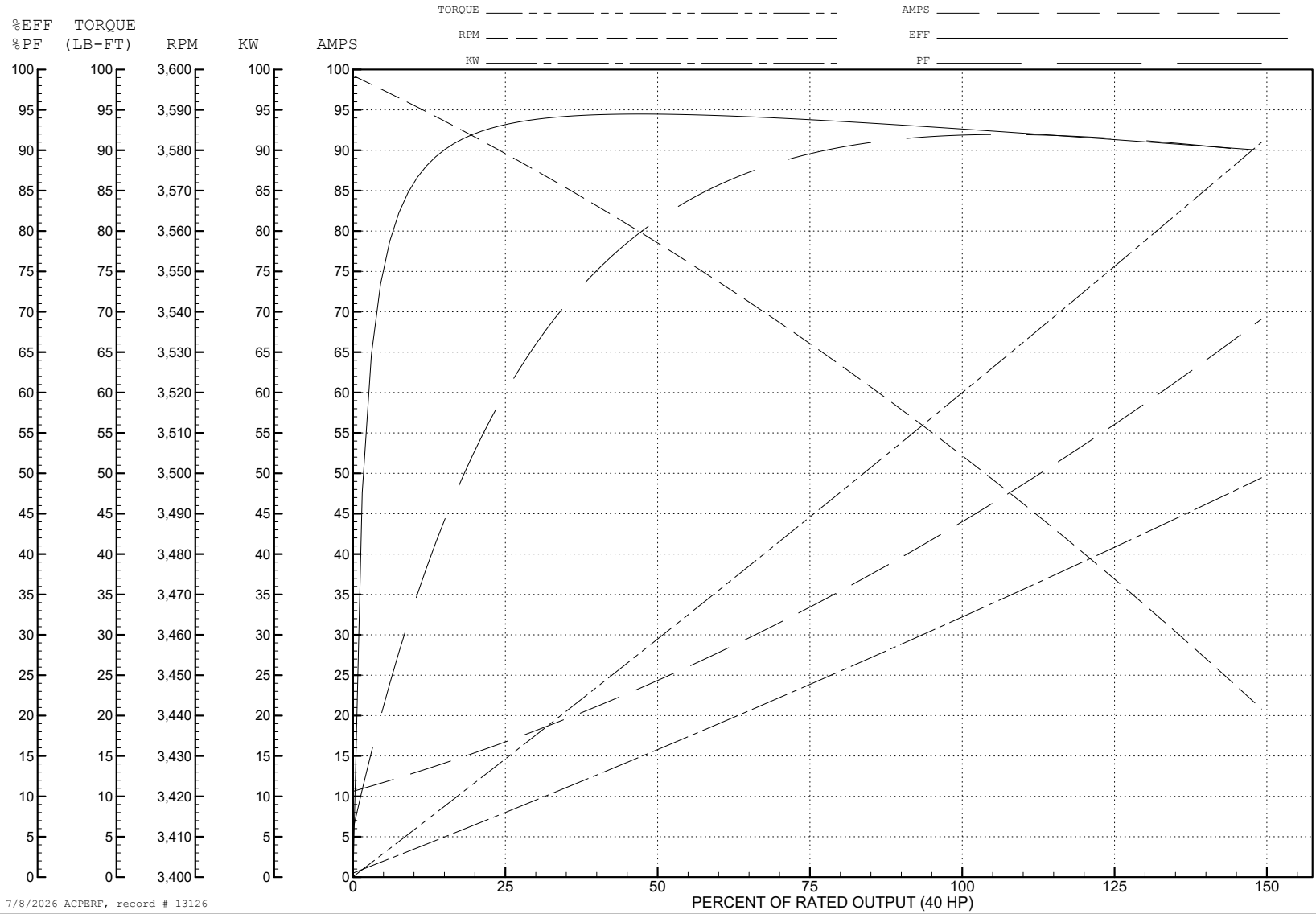
ABB Motors and Mechanical Inc.

WINDING # 39WGx287

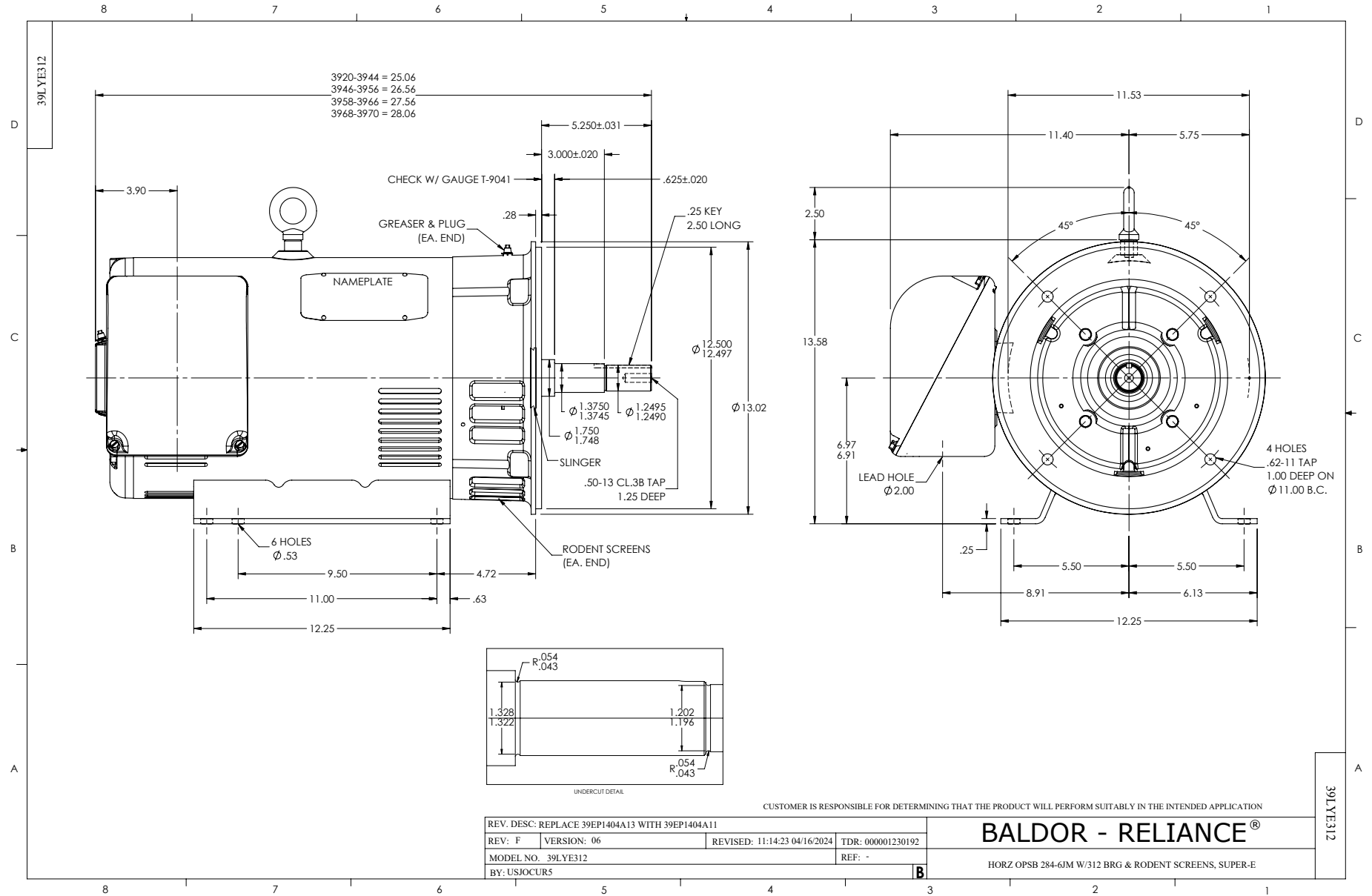
Typical performance - not guaranteed values.

40 HP 3 PH 60 HZ 3510 RPM 460 V 3956M

TORQUES (LB-FT): PO=252 PU=80.9 LR=115 LRA=326



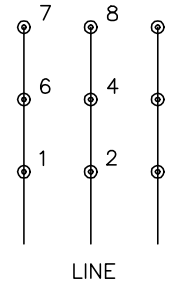
7/8/2026 ACPERF, record # 13126



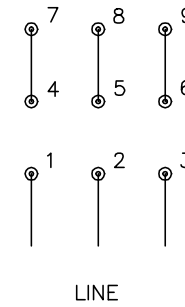
CD0180



LOW VOLTAGE
(2D)



HIGH VOLTAGE
(1D)



NOTES:

1. INTERCHANGE ANY TWO LINE LEADS TO REVERSE ROTATION.
2. OPTIONAL THERMOSTATS ARE PROVIDED WHEN SPECIFIED.
3. ACTUAL NUMBER OF INTERNAL PARALLEL CIRCUITS MAY BE A MULTIPLE OF THOSE SHOWN ABOVE.
4. LEAD COLORS ARE OPTIONAL. LEADS MUST ALWAYS BE NUMBERED AS SHOWN.

CD0180

| | | |
|-----------------------------------|--------------------------------|-------------------|
| REV. DESC: ADD CLASS CONN00000007 | | |
| REV. LTR: D | VERSION: 01 | TDR: 000001099922 |
| FILE: \AAA\00005\148 | REVISED: 10: 25: 29 02/19/2019 | BY: ENBRIRO |
| MTL: - | © □ | |

BALDOR - RELIANCE®

3PH, DV, 9 LEADS, DELTA CONNECTION

SH 1 of 1