

BALDOR • RELIANCE

Customer information packet

EJMM2538T-G

46M 2P OPSB HOR 286JM SE

Specifications

Enclosure	OPSB
Frame	286JM
Frame Material	Steel
Frequency	60.00 Hz
Motor Letter Type	Three Phase
Output @ Frequency	40.000 HP @ 60 HZ
Phase	3
Synchronous Speed @ Frequency	3600 RPM @ 60 HZ
Voltage @ Frequency	230.0 V @ 60 HZ 460.0 V @ 60 HZ
Agency Approvals	UR NEMA PREMIUM CSA EEV CSA
Ambient Temperature	40 °C
Auxillary Box	No Auxillary Box
Auxillary Box Lead Termination	None
Base Indicator	Rigid
Bearing Grease Type	Polyrex EM (-20F +300F)
Blower	None
Current @ Voltage	100.000 A @ 208.0 V 46.000 A @ 460.0 V 92.000 A @ 230.0 V
Design Code	B
Drip Cover	No Drip Cover
Duty Rating	CONT
Efficiency @ 100% Load	92.4 %
Electrically Isolated Bearing	Not Electrically Isolated
Feedback Device	NO FEEDBACK
Front Shaft Indicator	None
Heater Indicator	No Heater
High Voltage Full Load Amps	46.0 a

Part detail

Revision	E
Type	AC
Mech. spec.	40E283
Base	
Status	PRD/A
Elec. spec.	40WGX194
Layout	40LYE283
Eff. date	06-27-2024
CD Diagram	CD0180
Poles	02
Leads	9#8
Proprietary	False
Created date	04-03-2019

Insulation Class	F
Inverter Code	Inverter Ready
IP Rating	IP23
KVA Code	G
Lifting Lugs	Standard Lifting Lugs
Locked Bearing Indicator	Locked Bearing
Motor Lead Quantity/Wire Size	9 @ 8 AWG
Motor Lead Termination	Flying Leads
Motor Standards	NEMA
Motor Type	4046M
Mounting Arrangement	F1
Number of Poles	2
Overall Length	24.69 IN
Power Factor	89
Product Family	General Purpose
Pulley End Bearing Type	Ball
Pulley Face Code	C-Face
Pulley Shaft Indicator	Tapped & Key
Rodent Screen	Included
Service Factor	1.15
Shaft Diameter	1.250 IN
Shaft Ground Indicator	Shaft Grounding
Shaft Rotation	Reversible
Shaft Slinger Indicator	Shaft Slinger
Speed	3530 rpm
Speed Code	Single Speed
Starting Method	Direct on line
Thermal Device - Winding	None
Vibration Sensor Indicator	No Vibration Sensor
Winding Thermal 1	None
Winding Thermal 2	None

Nameplate

NP3554LUA

CAT.NO.	EJMM2538T-G	P/N		ENCL	OPSB
SPEC.	40E283X194G2	CC	010A	FRAME	286JM
HP	40	CLASS	F	HZ	60
RPM	3530	PH	3	DES	B
VOLTS	230/460	CODE	G	ODE BRG	6309
AMPS	92/46	DE BRG	6312		
RATING	40C AMB-CONT	NEMA-NOM-EFF	92.4	GREASE	POLYREX EM
PF	89	SER.F.	1.15	CT30-60(2:1) VT3-60(20:1)	
USABLE AT	50HZ 40HP 190/380V 112/56A		SF1.0		
HTR-VOLTS	HTR-AMPS	MAX. SPACE HEATER TEMP.			

AC Induction Motor Performance Data

Record # 42076

Typical performance - not guaranteed values

Winding: 40WGX194-R004		Type: 4046M	Enclosure: OPSB	
Nameplate Data			460 V, 60 Hz: High Voltage Connection	
Rated Output (HP)	40	Full Load Torque	59.6 LB-FT	
Volts	230/460	Start Configuration	direct on line	
Full Load Amps	92/46	Breakdown Torque	207 LB-FT	
R.P.M.	3530	Pull-up Torque	74.8 LB-FT	
Hz	60 Phase	3	Locked-rotor Torque	103 LB-FT
NEMA Design Code	B KVA Code	G	Starting Current	282 A
Service Factor (S.F.)	1.15	No-load Current	11.7 A	
NEMA Nom. Eff.	92.4 Power Factor	89	Line-line Res. @ 25°C	0.1848 Ω
Rating - Duty	40C AMB-CONT	Temp. Rise @ Rated Load	35°C	
S.F. Amps		Temp. Rise @ S.F. Load	44°C	
		Locked-rotor Power Factor	24	
		Rotor inertia	1.97 LB-FT ²	

Load Characteristics 460 V, 60 Hz, 40 HP

% of Rated Load	25	50	75	100	125	150	S.F.
Power Factor	66	82	88	89	90	90	90
Efficiency	91.4	93.7	93.7	93	92	90.7	92.4
Speed	3580.7	3565.4	3547.1	3527.4	3504.7	3481	3514
Line amperes	16.4	24.9	34.7	45.9	57	69.7	52.6

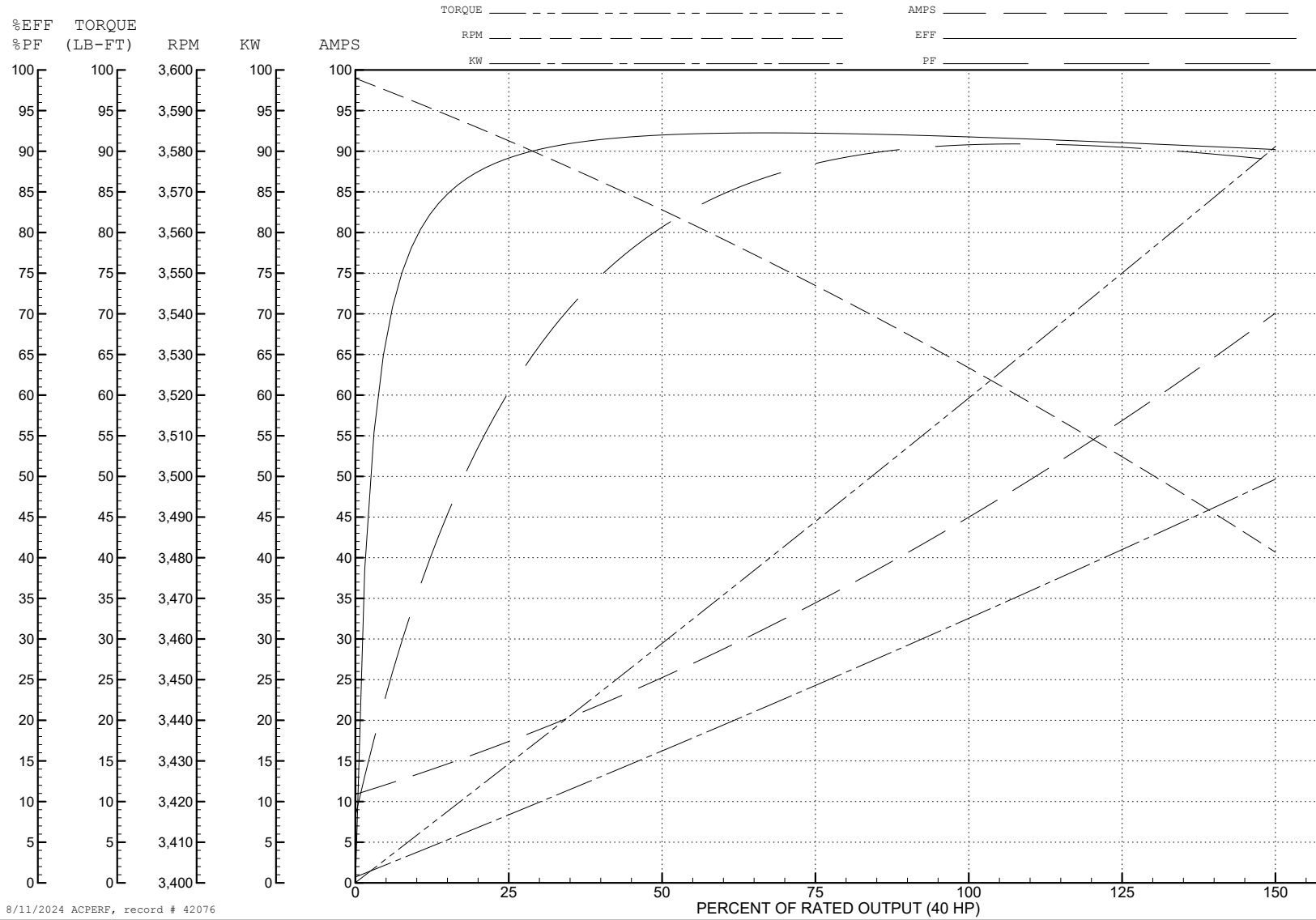
ABB Motors and Mechanical Inc.

WINDING # 40WGx194

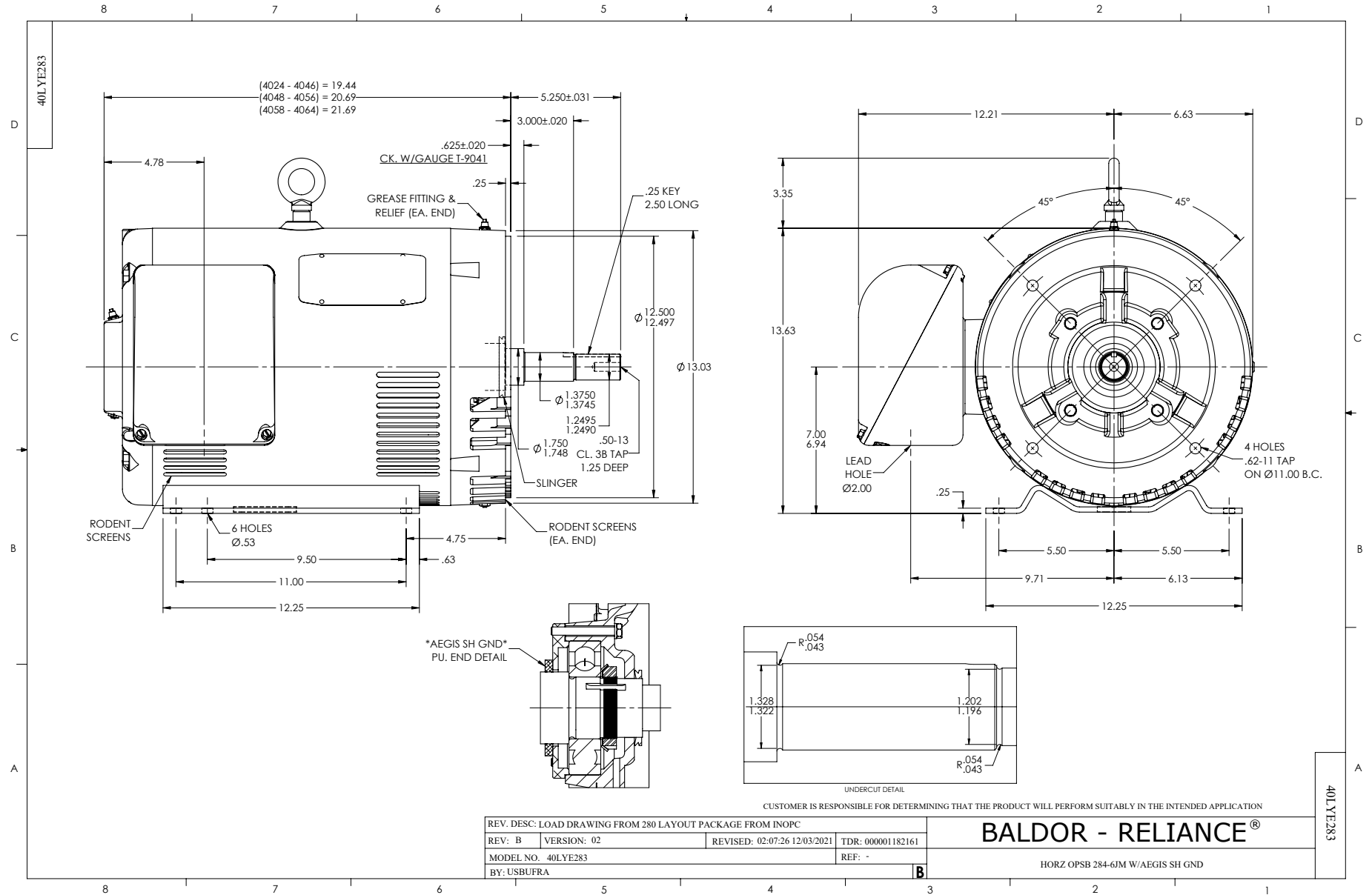
40 HP 3 PH 60 HZ 3530 RPM 460 V 4046M

Typical performance - not guaranteed values.

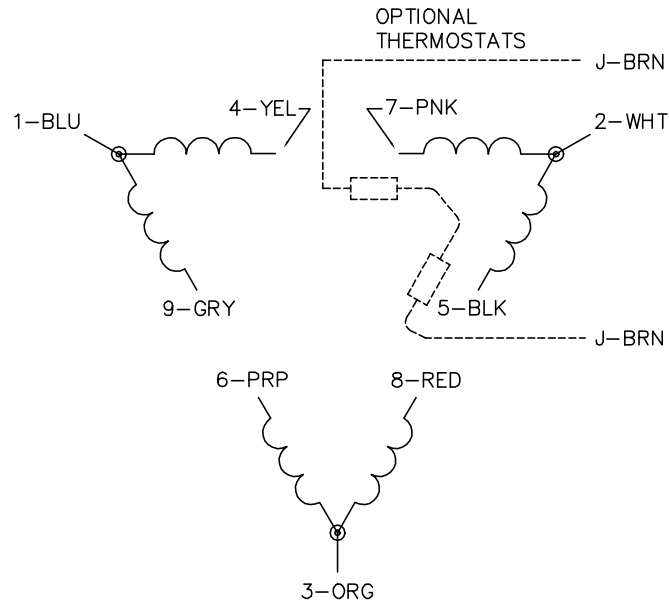
TORQUES (LB-FT): PO=207 PU=74.8 LR=103 LRA=282



8/11/2024 ACPERF, record # 42076



CD0180



LOW VOLTAGE
(2D)



HIGH VOLTAGE
(1D)



NOTES:

1. INTERCHANGE ANY TWO LINE LEADS TO REVERSE ROTATION.
2. OPTIONAL THERMOSTATS ARE PROVIDED WHEN SPECIFIED.
3. ACTUAL NUMBER OF INTERNAL PARALLEL CIRCUITS MAY BE A MULTIPLE OF THOSE SHOWN ABOVE.
4. LEAD COLORS ARE OPTIONAL. LEADS MUST ALWAYS BE NUMBERED AS SHOWN.

CD0180

REV. DESC: ADD CLASS CONN00000007		
REV. LTR: D	VERSION: 01	TDR: 000001099922
FILE: \AAA\00005\148	REVISED: 10: 25: 29 02/19/2019	BY: ENBRIRO
MTL: -	© □	

BALDOR - RELIANCE®

3PH, DV, 9 LEADS, DELTA CONNECTION

SH 1 of 1