

ABB BALDOR RELIANCE III

Customer information packet EJMM2535T-G

60M 4P OPSB HOR 286JM SE

Specifications

Enclosure	OPSB
Frame	286JM
Frame Material	Steel
Frequency	60.00 Hz
Motor Letter Type	Three Phase
Output @ Frequency	30.000 HP @ 60 HZ
Phase	3
Synchronous Speed @ Frequency	1800 RPM @ 60 HZ
Voltage @ Frequency	230.0 V @ 60 HZ 460.0 V @ 60 HZ
Agency Approvals	UR NEMA PREMIUM CSA EEV CSA
Ambient Temperature	40 °C
Auxiliary Box	NO AUXILLARY BOX
Auxiliary Box Lead Termination	None
Base Indicator	Rigid
Bearing Grease Type	Polyrex EM (-20F +300F)
Blower	None
Current @ Voltage	36.000 A @ 460.0 V 72.000 A @ 230.0 V 76.000 A @ 208.0 V
Design Code	A
Drip Cover	No Drip Cover
Duty Rating	CONT
Efficiency @ 100% Load	94.1 %
Electrically Isolated Bearing	Not Electrically Isolated
Feedback Device	NO FEEDBACK
Front Shaft Indicator	None
Heater Indicator	No Heater
High Voltage Full Load Amps	36.0 a

Part Detail

Revision	K
Type	AC
Mech. spec.	40E283
Base	
Status	PRD/A
Elec. spec.	40WGX339
Layout	40LYE283
Eff. date	12-11-2025
CD Diagram	CD0005
Poles	04
Leads	9#10
Proprietary	False
Created date	04-03-2019

Insulation Class	F
Inverter Code	Inverter Ready
IP Rating	IP23
KVA Code	H
Lifting Lugs	Standard Lifting Lugs
Locked Bearing Indicator	Locked Bearing
Motor Lead Quantity/Wire Size	9 @ 8 AWG
Motor Lead Termination	Flying Leads
Motor Standards	NEMA
Motor Type	4060M
Mounting Arrangement	F1
Number of Poles	4
Overall Length	26.94 IN
Power Factor	82
Product Family	General Purpose
Pulley End Bearing Type	Ball
Pulley Face Code	C-Face
Pulley Shaft Indicator	Tapped & Key
Rodent Screen	Included
Service Factor	1.15
Shaft Diameter	1.250 IN
Shaft Ground Indicator	Shaft Grounding
Shaft Rotation	Reversible
Shaft Slinger Indicator	Shaft Slinger
Speed	1775 rpm
Speed Code	Single Speed
Starting Method	Direct on line
Thermal Device - Winding	None
Vibration Sensor Indicator	No Vibration Sensor
Winding Thermal 1	None
Winding Thermal 2	None

Nameplate

NP3554LUA									
CAT.NO.	EJMM2535T-G			P/N				ENCL	OPSB
SPEC.	40E283X339G3	CC	010A	FRAME	286JM		SER.NO.		
HP	30		CLASS	H	HZ	60			
RPM	1775		PH	3	DES	A			
VOLTS	230/460		CODE	H	ODE BRG	6309	DE BRG	6312	
AMPS	74/37								
RATING	40C AMB-CONT		NEMA-NOM-EFF	94.1	GREASE	POLYREX EM			
PF	80	SER.F.	1.15		CT30-60(2:1) VT3-60(20:1)				
USABLE AT	50HZ 30HP 190/380V 86/43A			SF1.0					
HTR-VOLTS	HTR-AMPS		MAX. SPACE HEATER TEMP.						

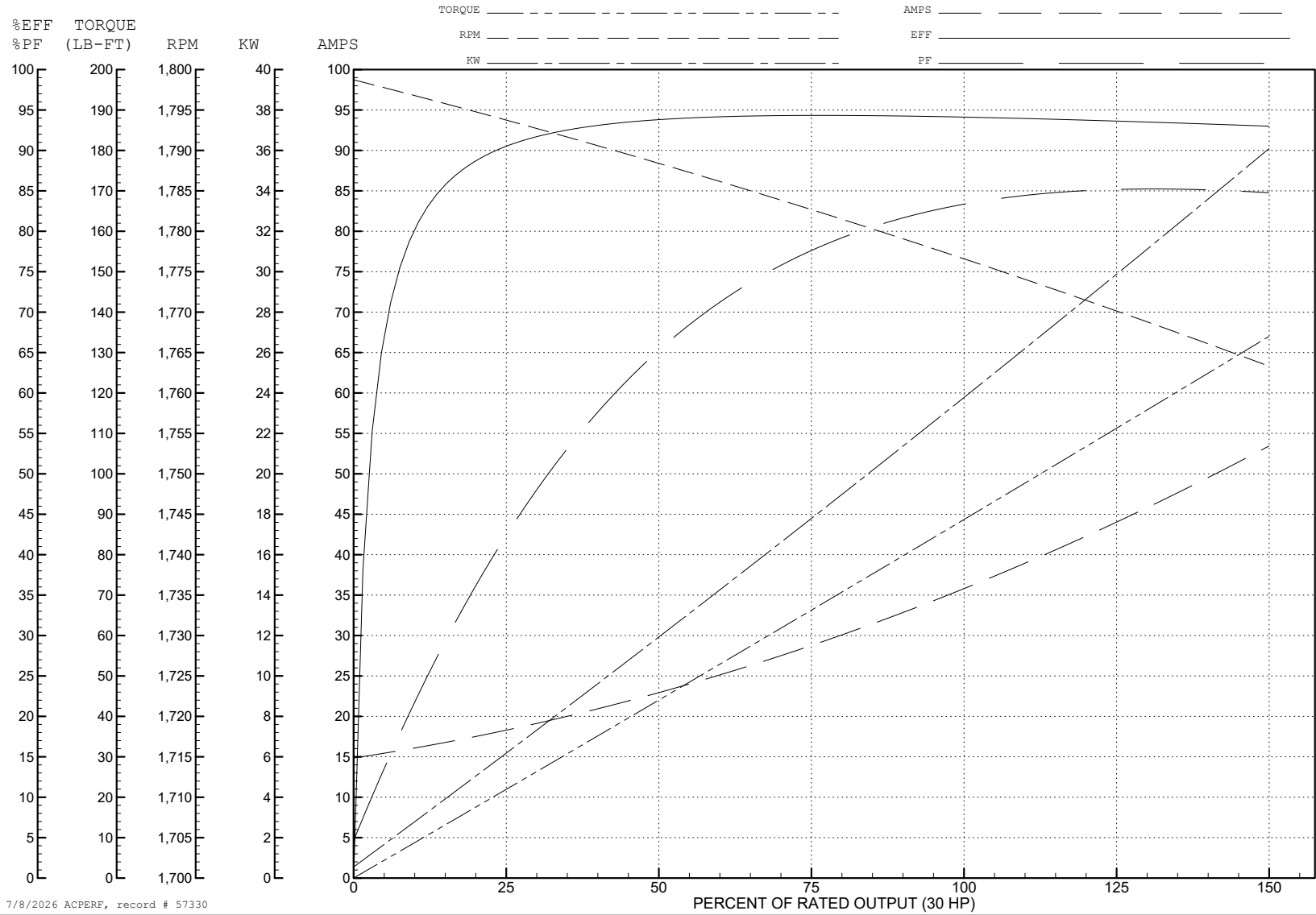
ABB Motors and Mechanical Inc.

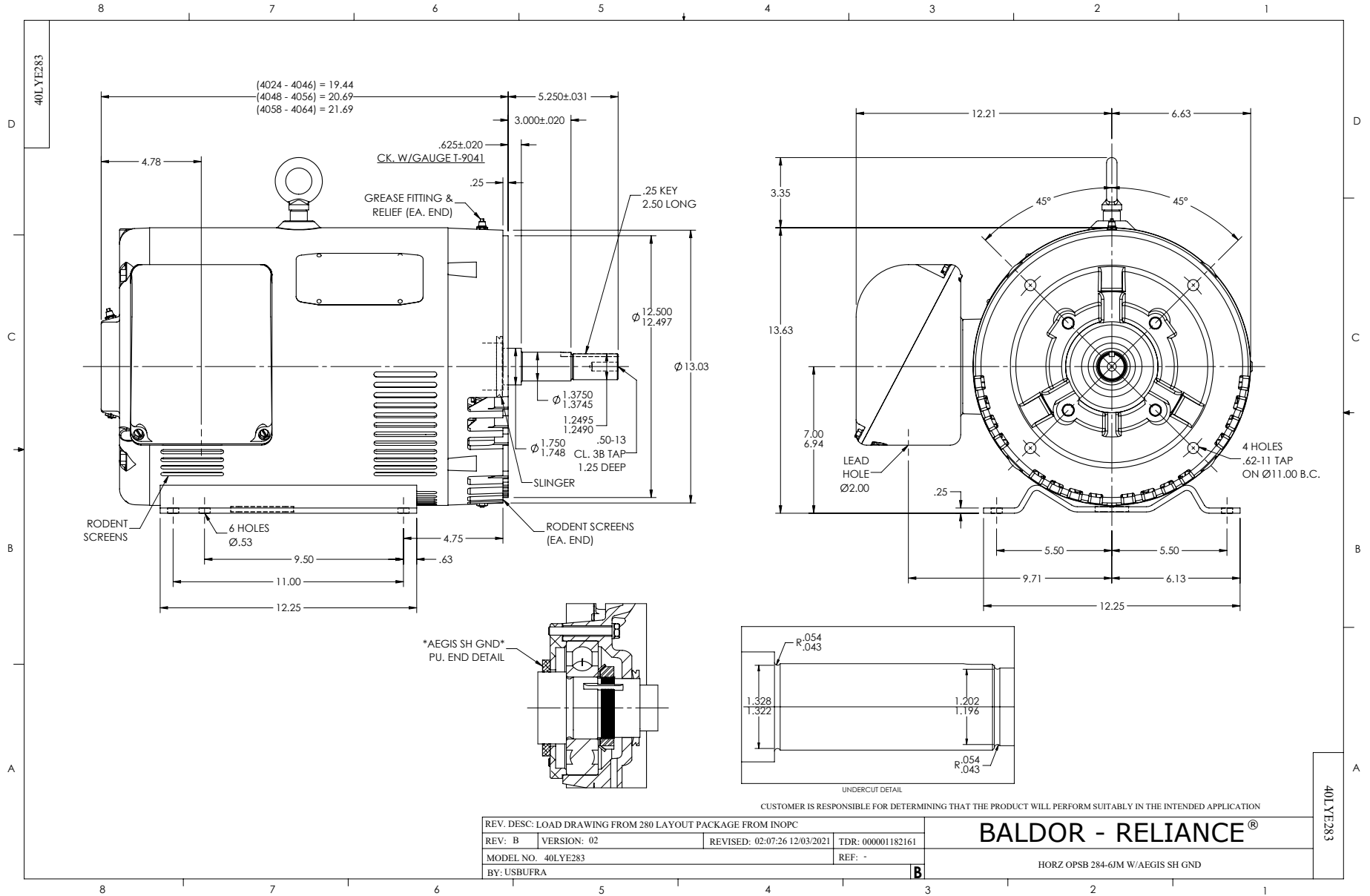
WINDING # 40WG339

30 HP 3 PH 60 HZ 1775 RPM 460 V 4060M

Typical performance - not guaranteed values.

TORQUES (LB-FT): PO=280 PU=130 LR=161 LRA=252

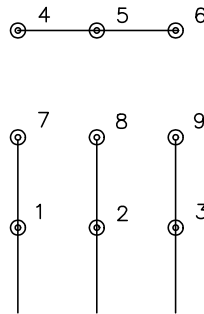




CD0005

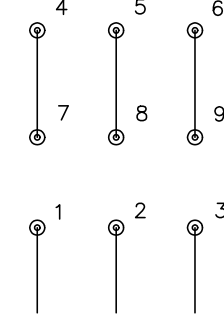


LOW VOLTAGE
(2Y)



LINE

HIGH VOLTAGE
(1Y)



LINE

NOTES:

1. INTERCHANGE ANY TWO LINE LEADS TO REVERSE ROTATION.
2. OPTIONAL THERMOSTATS ARE PROVIDED WHEN SPECIFIED.
3. ACTUAL NUMBER OF INTERNAL PARALLEL CIRCUITS MAY BE A MULTIPLE OF THOSE SHOWN ABOVE.
4. LEAD COLORS ARE OPTIONAL. LEADS MUST ALWAYS BE NUMBERED AS SHOWN.

CD0005

REV. DESC: REVISE TO SHOW OPTIONAL COLORS			
REV. LTR: E	BY: JLP	REVISED: 01/19/99 10:15	TDR: 0171435
S00000		FILE: AAA00005140	MDL: -
		MTL: -	

BALDOR ELECTRIC Co.

3PH, DV, 9 LEADS