

**BALDOR • RELIANCE**

---

# Customer information packet

## EJMM2534T

30HP, 3510RPM, 3PH, 60HZ, 284JM, 3948M, OPSB, F

Class -

Division - Not Applicable

## Specifications

Enclosure	OPSB
Frame	284JM
Frame Material	Steel
Frequency	60.00 Hz
Haz Area Division	Not Applicable
Motor Letter Type	Three Phase
Output @ Frequency	30.000 HP @ 60 HZ
Phase	3
Synchronous Speed @ Frequency	3600 RPM @ 60 HZ
Voltage @ Frequency	460.0 V @ 60 HZ 230.0 V @ 60 HZ
Agency Approvals	CSA EEV UR CSA
Ambient Temperature	40 °C
Auxillary Box	No Auxillary Box
Auxillary Box Lead Termination	None
Base Indicator	Rigid
Bearing Grease Type	Polyrex EM (-20F +300F)
Blower	None
Current @ Voltage	33.000 A @ 460.0 V 66.000 A @ 230.0 V 74.000 A @ 208.0 V
Design Code	B
Drip Cover	No Drip Cover
Duty Rating	CONT
Efficiency @ 100% Load	91.7 %
Electrically Isolated Bearing	Not Electrically Isolated
Feedback Device	NO FEEDBACK
Front Face Code	Standard
Front Shaft Indicator	None
Heater Indicator	No Heater

## Part detail

Revision	U
Type	AC
Mech. spec.	39E312
Base	
Status	PRD/A
Elec. spec.	39WGX286
Layout	39LYE312
Eff. date	06-26-2024
CD Diagram	CD0005
Poles	02
Leads	9#8
Proprietary	False
Created date	06-22-2009

High Voltage Full Load Amps	33.0 a
Insulation Class	F
Inverter Code	Inverter Ready
KVA Code	F
Lifting Lugs	Standard Lifting Lugs
Locked Bearing Indicator	Locked Bearing
Motor Lead Exit	Ko Box
Motor Lead Quantity/Wire Size	9 @ 8 AWG
Motor Lead Termination	Flying Leads
Motor Standards	NEMA
Motor Type	3948M
Mounting Arrangement	F1
Number of Poles	2
Overall Length	26.56 IN
Power Factor	92
Product Family	General Purpose
Pulley End Bearing Type	Ball
Pulley Face Code	C-Face
Pulley Shaft Indicator	Tapped & Key
Rodent Screen	Included
Service Factor	1.15
Shaft Diameter	1.375 IN
Shaft Extension Location	Pulley End
Shaft Ground Indicator	No Shaft Grounding
Shaft Rotation	Reversible
Shaft Slinger Indicator	Shaft Slinger
Speed	3510 rpm
Speed Code	Single Speed
Starting Method	Direct on line
Thermal Device - Bearing	None
Thermal Device - Winding	None
Vibration Sensor Indicator	No Vibration Sensor
Winding Thermal 1	None
Winding Thermal 2	None

**Nameplate**

**NP2138LUA**

<b>CAT.NO.</b>	EJMM2534T	<b>P/N</b>		<b>ENCLOSURE</b>	OPSB
<b>SPEC.</b>	39E312X286	<b>CC</b>	010A	<b>FRAME</b>	284JM
<b>HP</b>	30	<b>CLASS</b>	F	<b>HZ</b>	60
<b>RPM</b>	3510	<b>PH</b>	3	<b>DES</b>	B
<b>VOLT</b>	230/460	<b>KVA-CODE</b>	F	<b>ODE BRG</b>	6208
<b>AMP</b>	66/33	<b>DE BRG</b>			6312
<b>RATING</b>	40C AMB-CONT	<b>GREASE</b>	POLYREX EM		
<b>NEMA-NOM-EFF</b>	91.7	<b>PF</b>	92	<b>SER.F.</b>	1.15
<b>HTR-VOLTS</b>	50HZ 30HP 190/380V 82/41A			SF1.0	
<b>HTR-AMPS</b>					

**AC Induction Motor Performance Data**

Record # 13125

Typical performance - not guaranteed values

Winding: 39WGX286-R001		Type: 3948M	Enclosure: OPSB	
<b>Nameplate Data</b>			<b>460 V, 60 Hz: High Voltage Connection</b>	
Rated Output (HP)	30	Full Load Torque	45 LB-FT	
Volts	230/460	Start Configuration	direct on line	
Full Load Amps	66/33	Breakdown Torque	148 LB-FT	
R.P.M.	3510	Pull-up Torque	53 LB-FT	
Hz	60 Phase	Locked-rotor Torque	67.5 LB-FT	
NEMA Design Code	B KVA Code	Starting Current	207 A	
Service Factor (S.F.)	1.15	No-load Current	7.51 A	
NEMA Nom. Eff.	91.7 Power Factor	Line-line Res. @ 25°C	0.342 Ω	
Rating - Duty	40C AMB-CONT	Temp. Rise @ Rated Load	38°C	
S.F. Amps		Temp. Rise @ S.F. Load	48°C	
		Locked-rotor Power Factor	28	
		Rotor inertia	1.23 LB-FT <sup>2</sup>	

**Load Characteristics 460 V, 60 Hz, 30 HP**

% of Rated Load	25	50	75	100	125	150	S.F.
Power Factor	70	87	91	92	92	92	92
Efficiency	89.4	92.5	92.6	91.8	90.7	89	91.1
Speed	3577	3555	3531	3505	3478	3443	3489
Line amperes	10.9	17.2	24.9	33.1	41.7	51.8	38.26

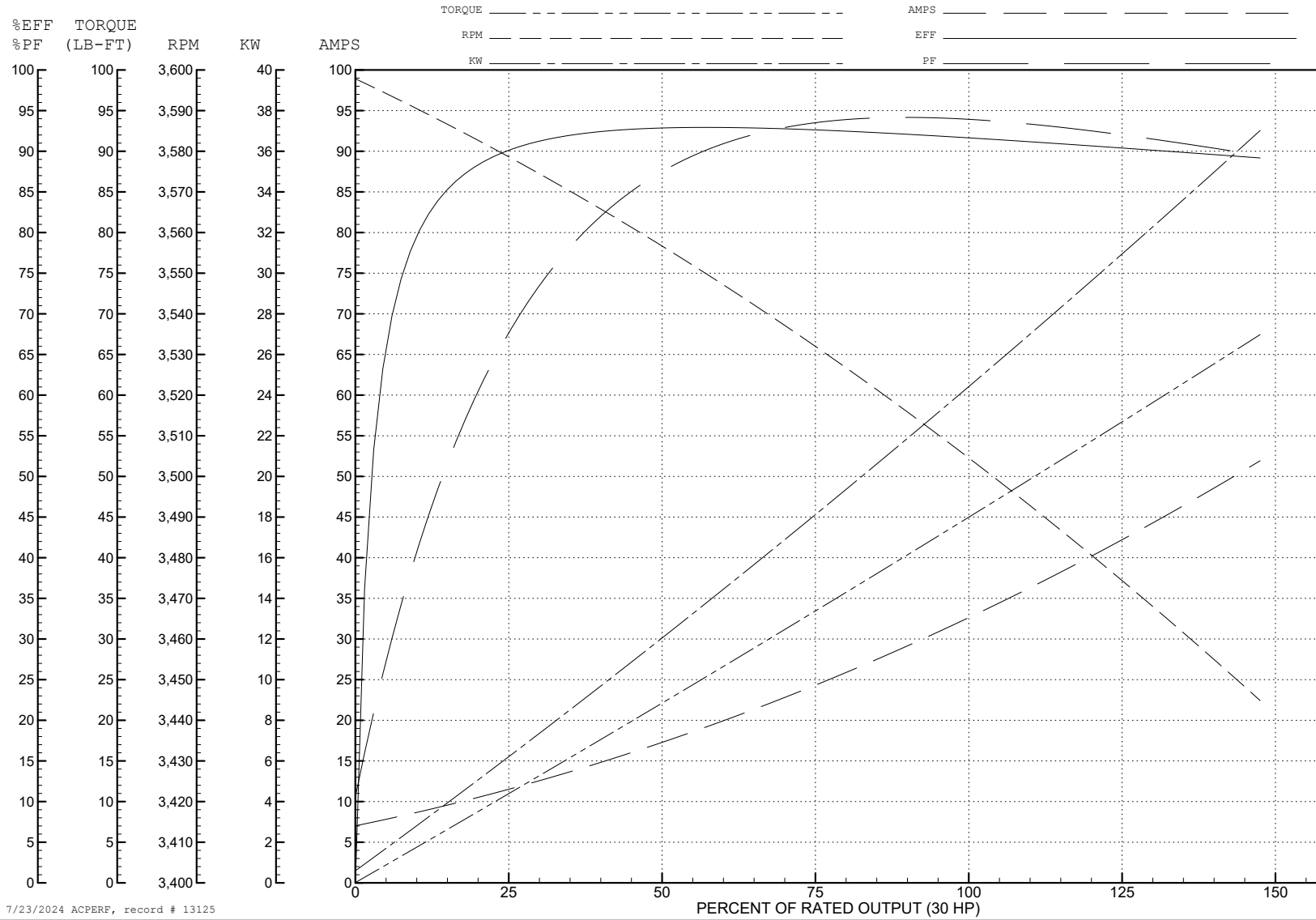
ABB Motors and Mechanical Inc.

WINDING # 39WGX286

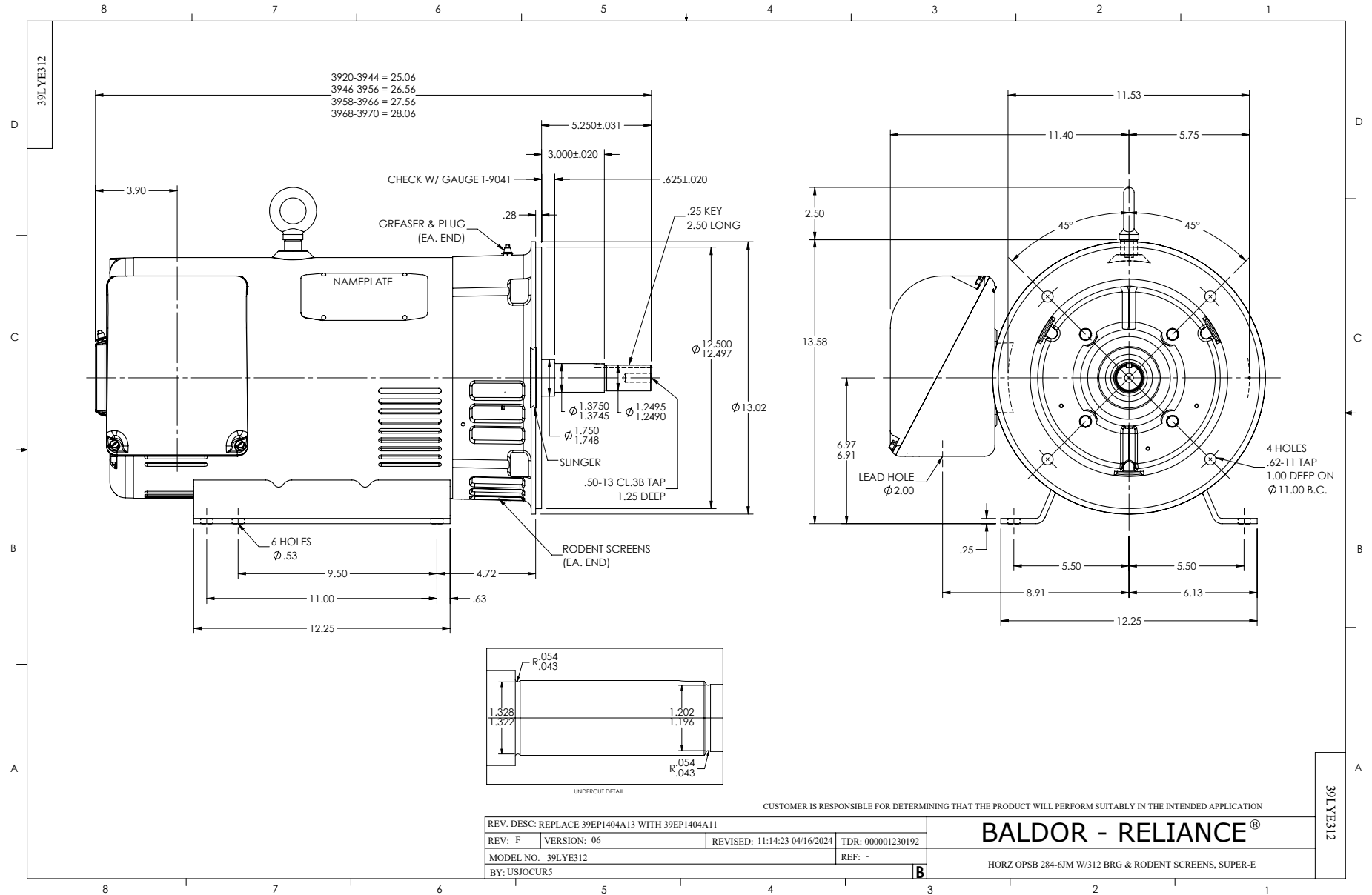
30 HP 3 PH 60 HZ 3510 RPM 460 V 3948M

Typical performance - not guaranteed values.

TORQUES (LB-FT): PO=148 PU=53 LR=67.5 LRA=207



7/23/2024 ACPERF, record # 13125



CD0005



LOW VOLTAGE  
(2Y)



LINE

HIGH VOLTAGE  
(1Y)



LINE

NOTES:

1. INTERCHANGE ANY TWO LINE LEADS TO REVERSE ROTATION.
2. OPTIONAL THERMOSTATS ARE PROVIDED WHEN SPECIFIED.
3. ACTUAL NUMBER OF INTERNAL PARALLEL CIRCUITS MAY BE A MULTIPLE OF THOSE SHOWN ABOVE.
4. LEAD COLORS ARE OPTIONAL. LEADS MUST ALWAYS BE NUMBERED AS SHOWN.

CD0005

REV. DESC: REVISE TO SHOW OPTIONAL COLORS			
REV. LTR: E	BY: JLP	REVISED: 01/19/99 10:15	TDR: 0171435
S00000		FILE: AAA00005140	MDL: -
		MTL: -	

**BALDOR ELECTRIC Co.**

3PH, DV, 9 LEADS