

BALDOR • RELIANCE

Customer information packet

EJMM2534T-5

30HP, 3530RPM, 3PH, 60HZ, 284JM, 4040M, OPSB, F

Specifications

Enclosure	OPSB
Frame	284JM
Frame Material	Steel
Frequency	60.00 Hz
Motor Letter Type	Three Phase
Output @ Frequency	30.000 HP @ 60 HZ
Phase	3
Synchronous Speed @ Frequency	3600 RPM @ 60 HZ
Voltage @ Frequency	575.0 V @ 60 HZ
Agency Approvals	CSA EEV UR CSA
Ambient Temperature	40 °C
Auxillary Box	No Auxillary Box
Auxillary Box Lead Termination	None
Base Indicator	Rigid
Bearing Grease Type	Polyrex EM (-20F +300F)
Blower	None
Current @ Voltage	27.000 A @ 575.0 V
Design Code	B
Drip Cover	No Drip Cover
Duty Rating	CONT
Efficiency @ 100% Load	93.6 %
Electrically Isolated Bearing	Not Electrically Isolated
Feedback Device	NO FEEDBACK
Front Face Code	Standard
Front Shaft Indicator	None
Heater Indicator	No Heater
High Voltage Full Load Amps	27.0 a
Insulation Class	F
Inverter Code	Inverter Ready
KVA Code	G

Part detail

Revision	W
Type	AC
Mech. spec.	40E211
Base	
Status	PRD/A
Elec. spec.	40WGW622
Layout	40LYE211
Eff. date	02-12-2024
CD Diagram	CD0006
Poles	02
Leads	3#10
Proprietary	False
Created date	06-16-2009

Lifting Lugs	Standard Lifting Lugs
Locked Bearing Indicator	Locked Bearing
Motor Lead Exit	Ko Box
Motor Lead Quantity/Wire Size	3 @ 10 AWG
Motor Lead Termination	Flying Leads
Motor Standards	NEMA
Motor Type	4040M
Mounting Arrangement	F1
Number of Poles	2
Overall Length	24.69 IN
Power Factor	89
Product Family	General Purpose
Pulley End Bearing Type	Ball
Pulley Face Code	C-Face
Pulley Shaft Indicator	Tapped & Key
Rodent Screen	Included
Service Factor	1.15
Shaft Diameter	1.375 IN
Shaft Extension Location	Pulley End
Shaft Ground Indicator	No Shaft Grounding
Shaft Rotation	Reversible
Shaft Slinger Indicator	Shaft Slinger
Speed	3530 rpm
Speed Code	Single Speed
Starting Method	Direct on line
Thermal Device - Bearing	None
Thermal Device - Winding	None
Vibration Sensor Indicator	No Vibration Sensor
Winding Thermal 1	None
Winding Thermal 2	None

Nameplate

NP2138L

CAT.NO.	EJMM2534T-5	P/N		ENCLOSURE	OPSB		
SPEC.	40E211W622	CC	010A	FRAME	284JM	S/N	
HP	30	CLASS	F	HZ	60		
RPM	3530	PH	3	DES	B		
VOLT	575	KVA-CODE	G	ODE BRG	6309	DE BRG	6312
AMP	27						
RATING	40C AMB-CONT	GREASE	POLYREX EM				
NEMA-NOM-EFF	93.6	PF	89	SER.F.	1.15		
HTR-VOLTS		HTR-AMPS					

AC Induction Motor Performance Data

Record # 13381

Typical performance - not guaranteed values

Winding: 40GW622-R001		Type: 4040M		Enclosure: OPSB	
Nameplate Data			575 V, 60 Hz: Single Voltage Motor		
Rated Output (HP)	30	Full Load Torque	44.8 LB-FT		
Volts	575	Start Configuration	direct on line		
Full Load Amps	27	Breakdown Torque	175 LB-FT		
R.P.M.	3530	Pull-up Torque	60.6 LB-FT		
Hz	60 Phase	3	Locked-rotor Torque	84.1 LB-FT	
NEMA Design Code	B KVA Code	G	Starting Current	181 A	
Service Factor (S.F.)	1.15	No-load Current	7.3 A		
NEMA Nom. Eff.	93.6 Power Factor	89	Line-line Res. @ 25°C	0.354 Ω	
Rating - Duty	40C AMB-CONT		Temp. Rise @ Rated Load	32°C	
S.F. Amps			Temp. Rise @ S.F. Load	39°C	
			Locked-rotor Power Factor	24	
			Rotor inertia	1.72 LB-FT ²	

Load Characteristics 575 V, 60 Hz, 30 HP

% of Rated Load	25	50	75	100	125	150	S.F.
Power Factor	63	80	87	90	91	90	91
Efficiency	88.7	92.6	93.5	93.6	93.1	92.4	93.3
Speed	3584	3571	3555	3539	3518	3498	3526
Line amperes	11	15.8	21.5	27	34	41.5	31.2

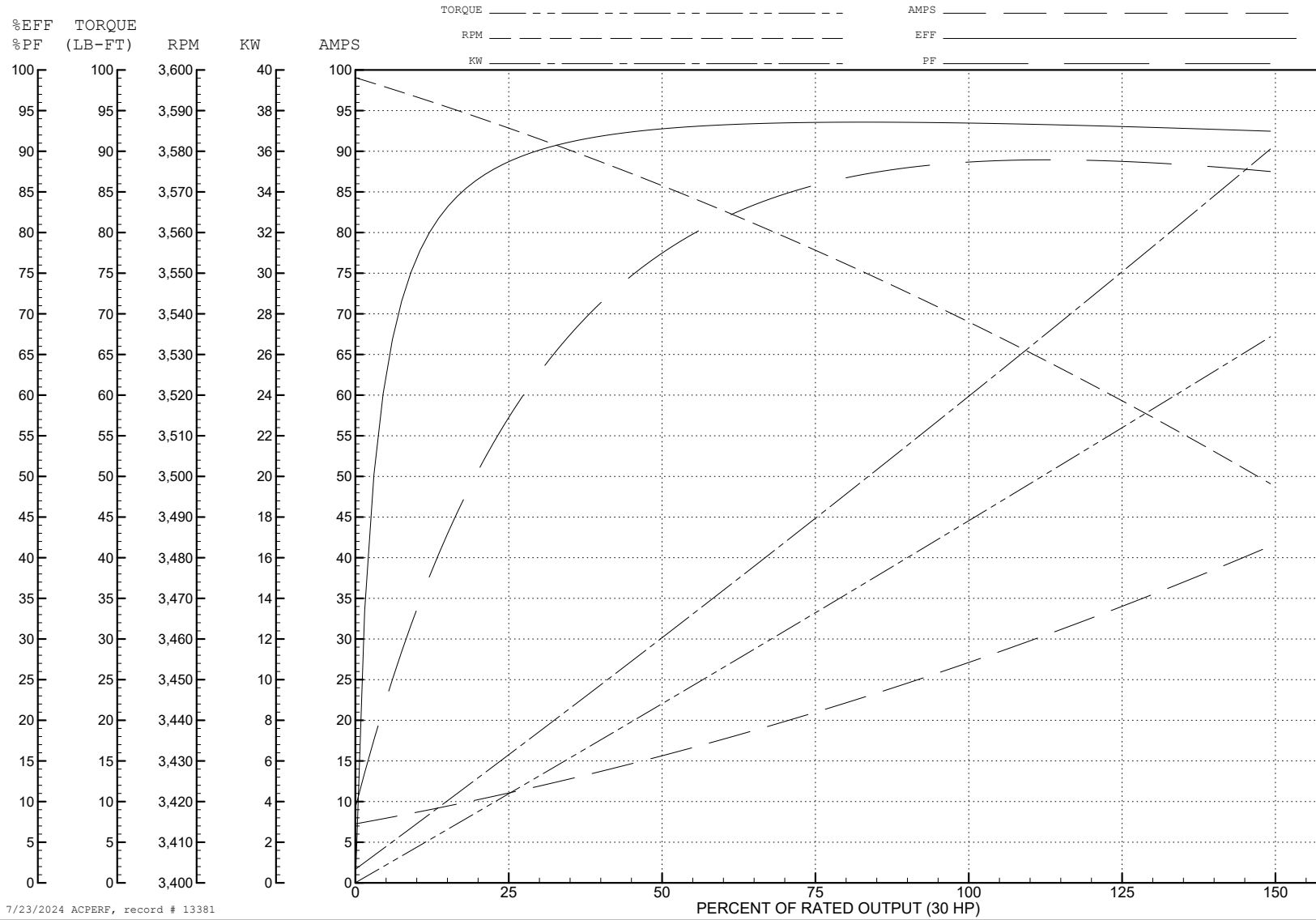
ABB Motors and Mechanical Inc.

WINDING # 40WGW622

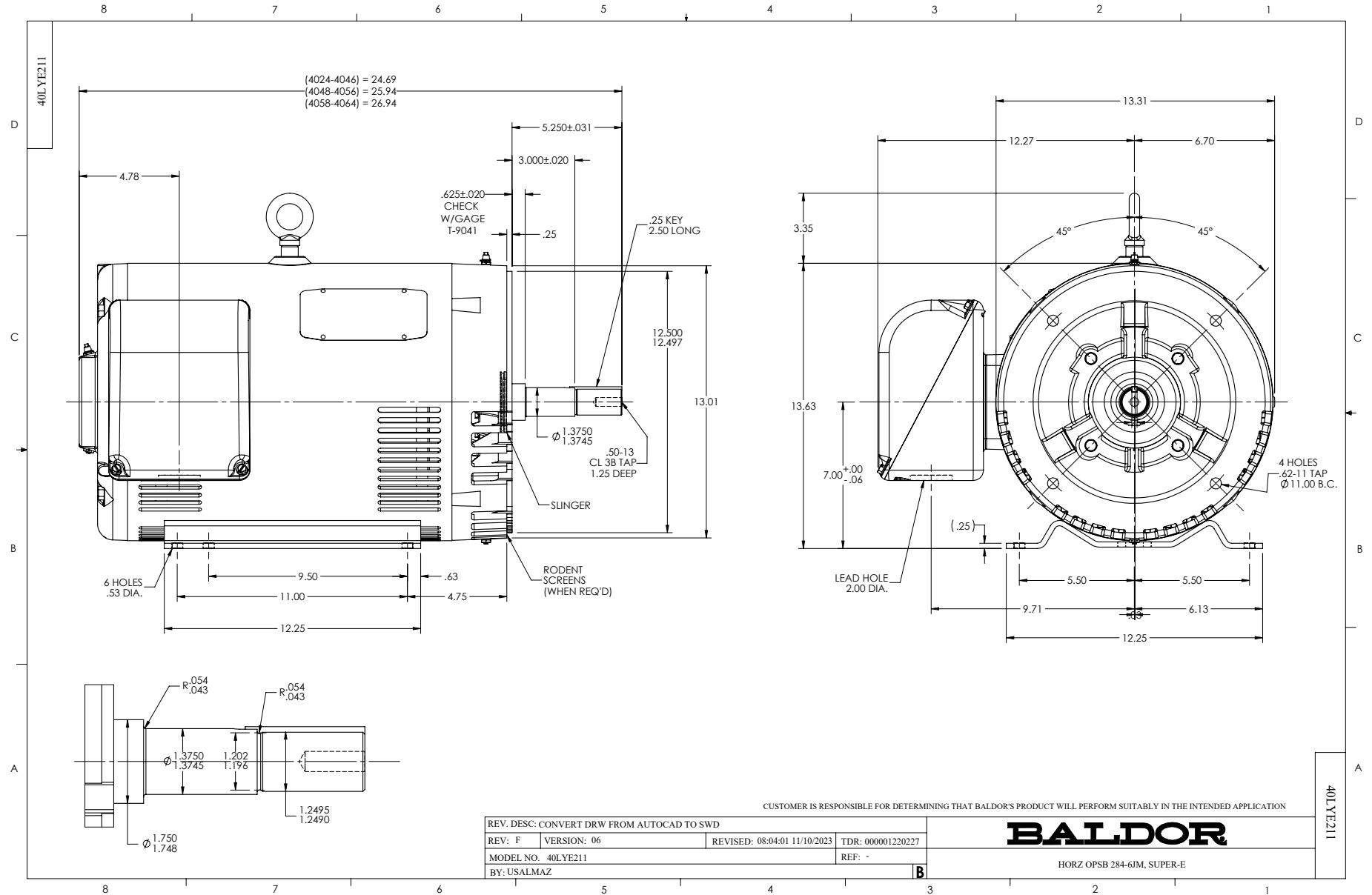
30 HP 3 PH 60 HZ 3530 RPM 575 V 4040M

Typical performance - not guaranteed values.

TORQUES (LB-FT): PO=175 PU=60.6 LR=84.1 LRA=181



7/23/2024 ACPERF, record # 13381



CD0006



NOTES:

1. THREE LEAD MOTOR MAY BE EITHER WYE CONNECTED OR DELTA CONNECTED.
2. INTERCHANGE ANY TWO LINE LEADS TO REVERSE ROTATION.
3. OPTIONAL THERMOSTATS ARE PROVIDED WHEN SPECIFIED.
4. ACTUAL NUMBER OF INTERNAL PARALLEL CIRCUITS MAY VARY.
5. LEAD COLORS ARE OPTIONAL. LEADS MUST BE NUMBERED AS SHOWN.

CD0006

REV. DESC: ADD CLASS CONN00000007		
REV. LTR: E	VERSION: 01	TDR: 000001099922
FILE: \AAA\00005\141	REVISED: 10:24:49 02/19/2019	BY: ENBRIRO
MTL: -	© □	

BALDOR - RELIANCE®

3PH, SV, 3 LEADS, WYE OR DELTA CONNECTED

SH 1 of 1