

ABB BALDOR RELIANCE III

Customer information packet

EJMM2524T

15HP, 1180RPM, 3PH, 60HZ, 284JM, 4038M, OPSB, F

Specifications

Enclosure	OPSB
Frame	284JM
Frame Material	Steel
Frequency	60.00 Hz
Motor Letter Type	Three Phase
Output @ Frequency	15.000 HP @ 60 HZ
Phase	3
Synchronous Speed @ Frequency	1200 RPM @ 60 HZ
Voltage @ Frequency	460.0 V @ 60 HZ 230.0 V @ 60 HZ
Agency Approvals	CSA CSA EEV NEMA PREMIUM UR
Ambient Temperature	40 °C
Auxiliary Box	NO AUXILLARY BOX
Auxiliary Box Lead Termination	None
Base Indicator	Rigid
Bearing Grease Type	Polyrex EM (-20F +300F)
Blower	None
Current @ Voltage	42.000 A @ 208.0 V 41.000 A @ 230.0 V 20.500 A @ 460.0 V
Design Code	B
Drip Cover	No Drip Cover
Duty Rating	CONT
Efficiency @ 100% Load	91.7 %
Electrically Isolated Bearing	Not Electrically Isolated
Feedback Device	NO FEEDBACK
Front Face Code	Standard
Front Shaft Indicator	None
Heater Indicator	No Heater

Part Detail

Revision	L
Type	AC
Mech. spec.	40E211
Base	
Status	PRD/A
Elec. spec.	40WGX775
Layout	40LYE211
Eff. date	01-31-2025
CD Diagram	CD0005
Poles	06
Leads	9#10
Proprietary	False
Created date	06-05-2015

High Voltage Full Load Amps	20.5 a
Insulation Class	F
Inverter Code	Inverter Ready
KVA Code	G
Lifting Lugs	Standard Lifting Lugs
Locked Bearing Indicator	Locked Bearing
Motor Lead Exit	Ko Box
Motor Lead Quantity/Wire Size	9 @ 10 AWG
Motor Lead Termination	Flying Leads
Motor Standards	NEMA
Motor Type	4038M
Mounting Arrangement	F1
Number of Poles	6
Overall Length	24.69 IN
Power Factor	75
Product Family	General Purpose
Pulley End Bearing Type	Ball
Pulley Face Code	C-Face
Pulley Shaft Indicator	Tapped & Key
Rodent Screen	Included
Service Factor	1.15
Shaft Diameter	1.250 IN
Shaft Extension Location	Pulley End
Shaft Ground Indicator	No Shaft Grounding
Shaft Rotation	Reversible
Shaft Slinger Indicator	Shaft Slinger
Speed	1180 rpm
Speed Code	Single Speed
Starting Method	Direct on line
Thermal Device - Bearing	None
Thermal Device - Winding	None
Vibration Sensor Indicator	No Vibration Sensor
Winding Thermal 1	None
Winding Thermal 2	None

Nameplate

NP2138LUA										
CAT.NO.	EJMM2524T		P/N				ENCLOSURE	OPSB		
SPEC.	40E211X775	CC	010A	FRAME	284JM	S/N				
HP	15	CLASS	F	HZ	60					
RPM	1180	PH	3	DES	B					
VOLT	230/460	KVA-CODE	G	ODE BRG	6309	DE BRG	6312			
AMP	41/20.5									
RATING	40C AMB-CONT		GREASE	POLYREX EM						
NEMA-NOM-EFF	91.7	PF	75	SER.F.	1.15					
	50HZ 15HP 190/380V 48/24A					SF1.0				
HTR-VOLTS	HTR-AMPS									

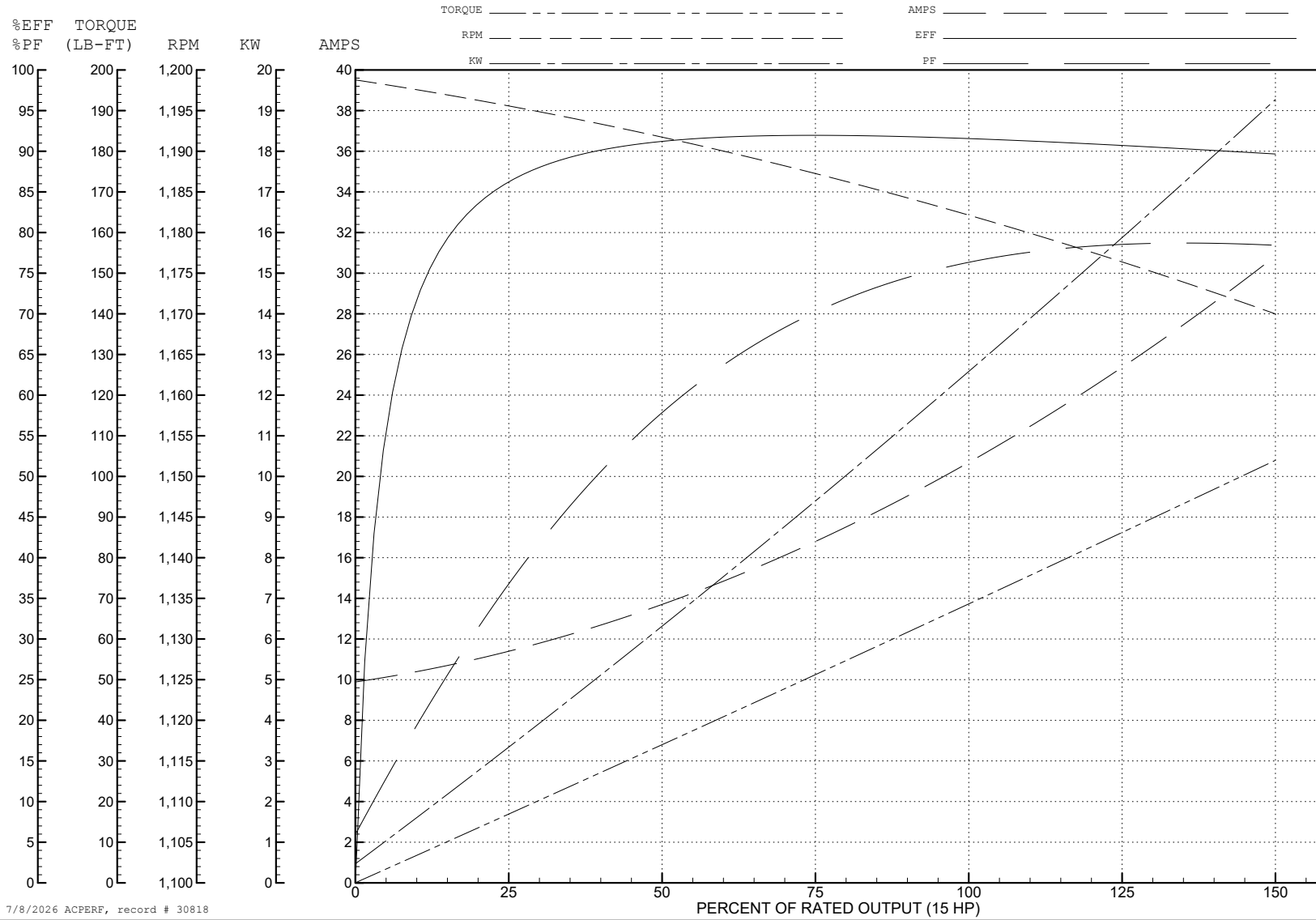
ABB Motors and Mechanical Inc.

WINDING # 40WGx775

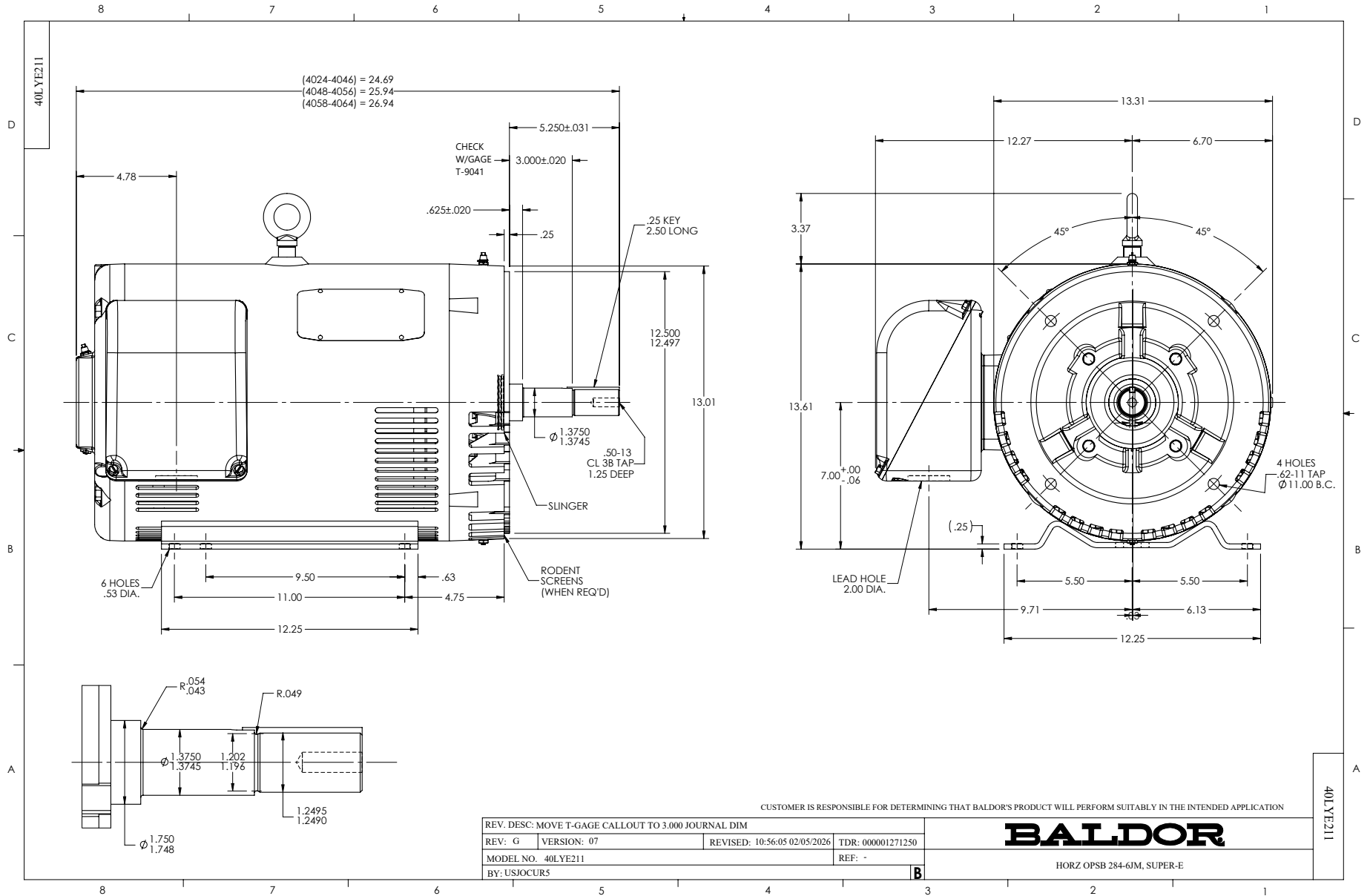
Typical performance - not guaranteed values.

15 HP 3 PH 60 HZ 1180 RPM 460 V 4038M

TORQUES (LB-FT): PO=185 PU=87.7 LR=105 LRA=116



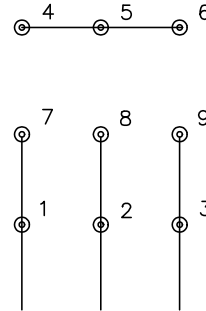
7/8/2026 ACPERF, record # 30818



CD0005

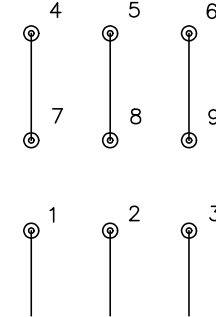


LOW VOLTAGE
(2Y)



LINE

HIGH VOLTAGE
(1Y)



LINE

NOTES:

1. INTERCHANGE ANY TWO LINE LEADS TO REVERSE ROTATION.
2. OPTIONAL THERMOSTATS ARE PROVIDED WHEN SPECIFIED.
3. ACTUAL NUMBER OF INTERNAL PARALLEL CIRCUITS MAY BE A MULTIPLE OF THOSE SHOWN ABOVE.
4. LEAD COLORS ARE OPTIONAL. LEADS MUST ALWAYS BE NUMBERED AS SHOWN.

CD0005

REV. DESC: REVISE TO SHOW OPTIONAL COLORS			
REV. LTR: E	BY: JLP	REVISED: 01/19/99 10:15	TDR: 0171435
S00000		FILE: AAA00005140	MDL: -
		MTL: -	

BALDOR ELECTRIC Co.

3PH, DV, 9 LEADS