

BALDOR • RELIANCE

Customer information packet

EHM4103T-5

25HP, 1770RPM, 3PH, 60HZ, 284T, 1056M, TEFC, F1

Class - None

Division - Not Applicable

Specifications

| | |
|--------------------------------|---------------------------|
| Enclosure | TEFC |
| Frame | 284T |
| Frame Material | Iron |
| Frequency | 60.00 Hz |
| Motor Letter Type | Three Phase |
| Output @ Frequency | 25.000 HP @ 60 HZ |
| Phase | 3 |
| Synchronous Speed @ Frequency | 1800 RPM @ 60 HZ |
| Voltage @ Frequency | 575.0 V @ 60 HZ |
| XP Class and Group | None |
| XP Division | Not Applicable |
| Agency Approvals | UR CSA CSA EEV |
| Ambient Temperature | 40 °C |
| Auxillary Box | No Auxillary Box |
| Auxillary Box Lead Termination | None |
| Base Indicator | Rigid |
| Bearing Grease Type | Polyrex EM (-20F +300F) |
| Blower | None |
| Current @ Voltage | 24.000 A @ 575.0 V |
| Design Code | B |
| Drip Cover | No Drip Cover |
| Duty Rating | CONT |
| Efficiency @ 100% Load | 93.6 % |
| Electrically Isolated Bearing | Not Electrically Isolated |
| Feedback Device | NO FEEDBACK |
| Front Face Code | Standard |
| Front Shaft Indicator | None |
| Heater Indicator | No Heater |
| High Voltage Full Load Amps | 24.0 a |
| Insulation Class | F |

Part detail

| | |
|--------------|------------|
| Revision | N |
| Type | AC |
| Mech. spec. | 10H756 |
| Base | |
| Status | PRD/A |
| Elec. spec. | 10WGZ620 |
| Layout | 10LYH756 |
| Eff. date | 02-12-2024 |
| CD Diagram | CD0006 |
| Poles | 04 |
| Leads | 3#10 |
| Proprietary | False |
| Created date | 01-26-2017 |

| | |
|--------------------------------------|--------------------------|
| Inverter Code | Inverter Ready |
| KVA Code | F |
| Lifting Lugs | Standard Lifting Lugs |
| Locked Bearing Indicator | Locked Bearing |
| Motor Lead Exit | Ko Box |
| Motor Lead Quantity/Wire Size | 3 @ 10 AWG |
| Motor Lead Termination | Flying Leads |
| Motor Standards | NEMA |
| Motor Type | 1056M |
| Mounting Arrangement | F1 |
| Number of Poles | 4 |
| Overall Length | 27.76 IN |
| Power Factor | 85 |
| Product Family | General Purpose |
| Pulley End Bearing Type | Ball |
| Pulley Face Code | Standard |
| Pulley Shaft Indicator | Standard |
| Rodent Screen | None |
| Service Factor | 1.15 |
| Shaft Diameter | 1.875 IN |
| Shaft Extension Location | Pulley End |
| Shaft Ground Indicator | Mounting Provisions Only |
| Shaft Rotation | Reversible |
| Shaft Slinger Indicator | No Slinger |
| Speed | 1770 rpm |
| Speed Code | Single Speed |
| Starting Method | Direct on line |
| Thermal Device - Bearing | NONE (OLD) |
| Thermal Device - Winding | None |
| Vibration Sensor Indicator | No Vibration Sensor |
| Winding Thermal 1 | None |
| Winding Thermal 2 | None |

Nameplate

NP2138L

| | | | | | |
|---------------------|--------------|-----------------|------------|------------------|------|
| CAT.NO. | EHM4103T-5 | P/N | | ENCLOSURE | TEFC |
| SPEC. | 10H756Z620G1 | CC | 010A | FRAME | 284T |
| HP | 25 | CLASS | F | HZ | 60 |
| RPM | 1770 | PH | 3 | DES | B |
| VOLT | 575 | KVA-CODE | F | ODE BRG | 6309 |
| AMP | 24 | DE BRG | 6311 | | |
| RATING | 40C AMB-CONT | GREASE | POLYREX EM | | |
| NEMA-NOM-EFF | 93.6 | PF | 85 | SER.F. | 1.15 |
| | SFA 27 | | | | |
| HTR-VOLTS | | HTR-AMPS | | | |

AC Induction Motor Performance Data

Record # 62101

Typical performance - not guaranteed values

| Winding: 10WGZ620-R002 | | Type: 1056M | | Enclosure: TEFC | |
|------------------------|-------------------|--------------|---|-----------------|-------------------------|
| Nameplate Data | | | 575 V, 60 Hz: Single Voltage Motor | | |
| Rated Output (HP) | | 25 | Full Load Torque | | 74.36 LB-FT |
| Volts | | 575 | Start Configuration | | direct on line |
| Full Load Amps | | 24 | Breakdown Torque | | 196 LB-FT |
| R.P.M. | | 1770 | Pull-up Torque | | 90.75 LB-FT |
| Hz | 60 Phase | 3 | Locked-rotor Torque | | 114 LB-FT |
| NEMA Design Code | B KVA Code | F | Starting Current | | 137 A |
| Service Factor (S.F.) | | 1.15 | No-load Current | | 8.24 A |
| NEMA Nom. Eff. | 93.6 Power Factor | 85 | Line-line Res. @ 25°C | | 0.463 Ω |
| Rating - Duty | | 40C AMB-CONT | Temp. Rise @ Rated Load | | 54°C |
| S.F. Amps | | | Temp. Rise @ S.F. Load | | 67°C |
| | | | Locked-rotor Power Factor | | 30.4 |
| | | | Rotor inertia | | 4.46 LB-FT ² |

Load Characteristics 575 V, 60 Hz, 25 HP

| % of Rated Load | 25 | 50 | 75 | 100 | 125 | 150 | S.F. |
|-----------------|------|-------|-------|-------|-------|-------|------|
| Power Factor | 51 | 73 | 82 | 85 | 86 | 86 | 86 |
| Efficiency | 91 | 93.8 | 94.1 | 93.7 | 92.8 | 92.1 | 93.1 |
| Speed | 1793 | 1785 | 1779 | 1771 | 1762 | 1751 | 1766 |
| Line amperes | 9.93 | 13.55 | 18.28 | 23.59 | 29.19 | 35.78 | 27 |

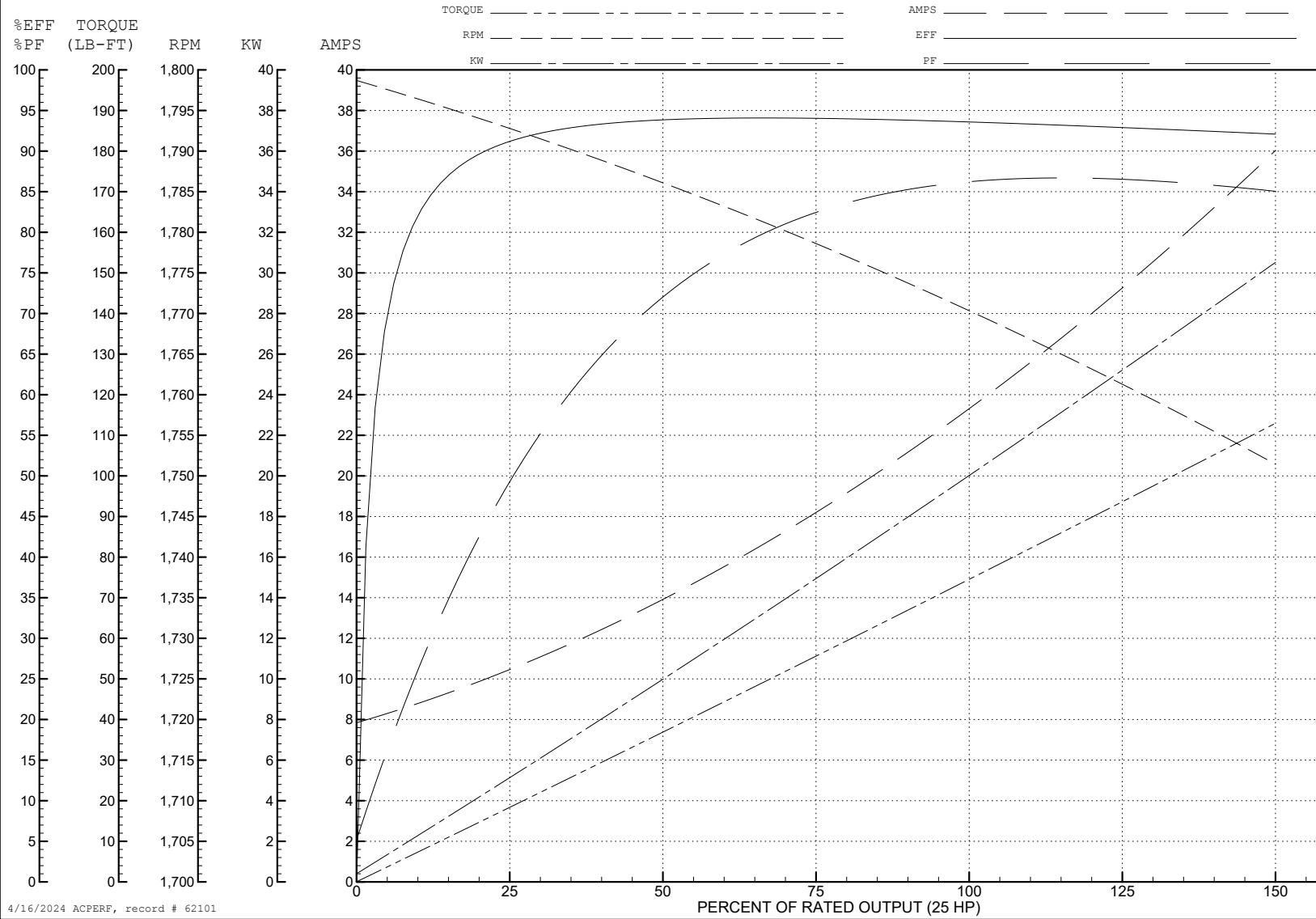
ABB Motors and Mechanical Inc.

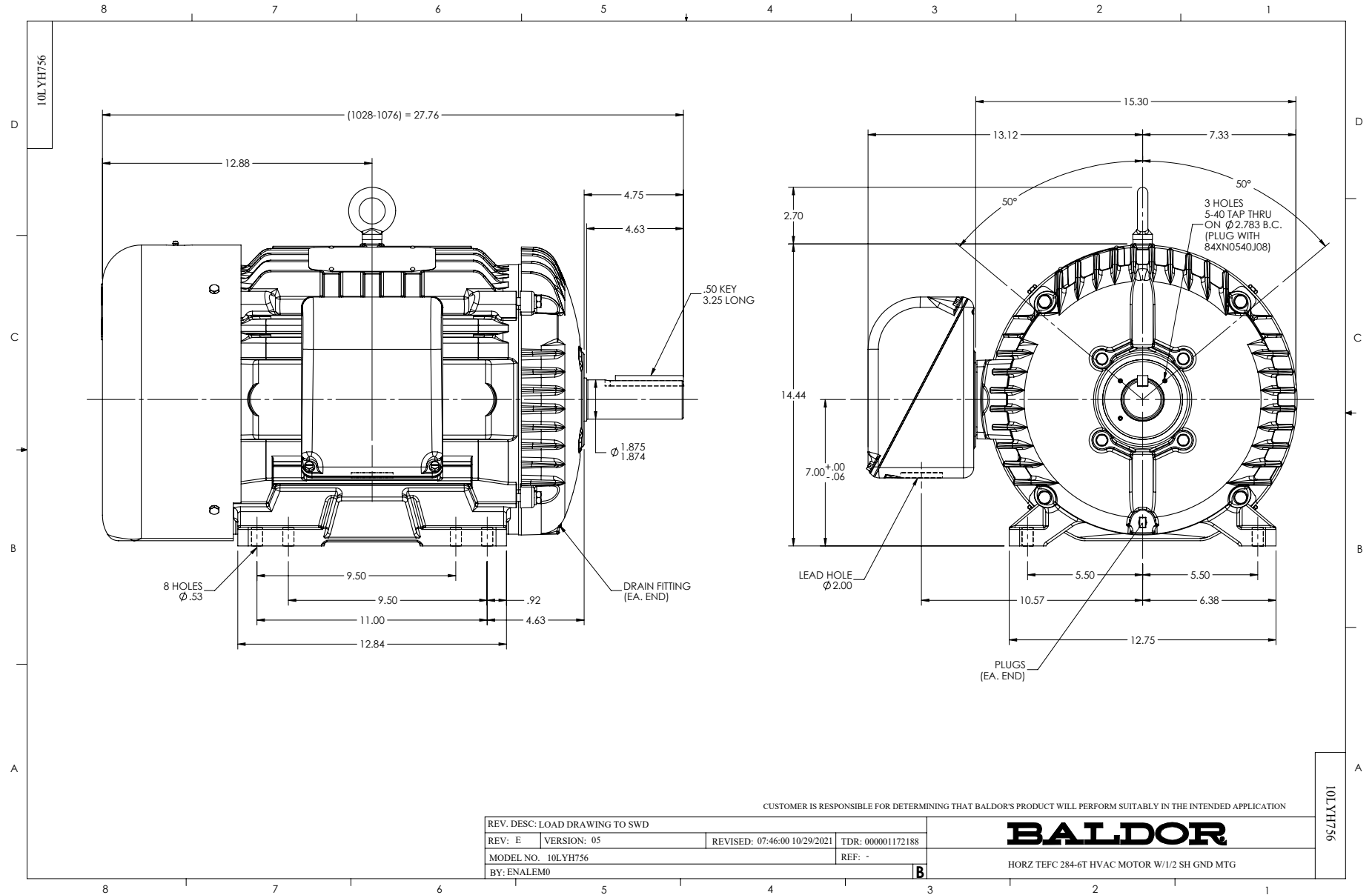
WINDING # 10WGZ620

Typical performance - not guaranteed values.

25 HP 3 PH 60 HZ 1770 RPM 575 V 1056M

TORQUES (LB-FT): PO=196 PU=90.75 LR=114 LRA=137





CD0006



NOTES:

1. THREE LEAD MOTOR MAY BE EITHER WYE CONNECTED OR DELTA CONNECTED.
2. INTERCHANGE ANY TWO LINE LEADS TO REVERSE ROTATION.
3. OPTIONAL THERMOSTATS ARE PROVIDED WHEN SPECIFIED.
4. ACTUAL NUMBER OF INTERNAL PARALLEL CIRCUITS MAY VARY.
5. LEAD COLORS ARE OPTIONAL. LEADS MUST BE NUMBERED AS SHOWN.

CD0006

| | | |
|-----------------------------------|------------------------------|-------------------|
| REV. DESC: ADD CLASS CONN00000007 | | |
| REV. LTR: E | VERSION: 01 | TDR: 000001099922 |
| FILE: \AAA\00005\141 | REVISED: 10:24:49 02/19/2019 | BY: ENBRIRO |
| MTL: - | | © □ |

BALDOR - RELIANCE®

3PH, SV, 3 LEADS, WYE OR DELTA CONNECTED

SH 1 of 1