



Customer information packet

EHM3313T-8

10HP, 1770RPM, 3PH, 60HZ, 215T, 3740M, OPSB, F1

Class - None

Division - Not Applicable

Specifications

Enclosure	OPSB
Frame	215T
Frame Material	Steel
Frequency	60.00 Hz
Motor Letter Type	Three Phase
Output @ Frequency	10.000 HP @ 60 HZ
Phase	3
Synchronous Speed @ Frequency	1800 RPM @ 60 HZ
Voltage @ Frequency	200.0 V @ 60 HZ
XP Class and Group	None
XP Division	Not Applicable
Agency Approvals	UR CSA
Ambient Temperature	40 °C
Auxillary Box	No Auxillary Box
Auxillary Box Lead Termination	None
Base Indicator	Rigid
Bearing Grease Type	Polyrex EM (-20F +300F)
Blower	None
Current @ Voltage	29.500 A @ 200.0 V 30.300 A @ 208.0 V
Design Code	B
Drip Cover	No Drip Cover
Duty Rating	CONT
Efficiency @ 100% Load	91.7 %
Electrically Isolated Bearing	Not Electrically Isolated
Feedback Device	NO FEEDBACK
Front Face Code	Standard
Front Shaft Indicator	None
Heater Indicator	No Heater
High Voltage Full Load Amps	29.5 a
Insulation Class	F

Part detail

Revision	U
Type	AC
Mech. spec.	37J637
Base	
Status	PRD/A
Elec. spec.	37WGT937
Layout	37LYJ637
Eff. date	08-15-2022
CD Diagram	CD0006
Poles	04
Leads	3#10
Proprietary	False
Created date	02-18-2010

Inverter Code	Inverter Ready
KVA Code	H
Lifting Lugs	Standard Lifting Lugs
Locked Bearing Indicator	No Locked Bearing
Motor Lead Exit	Ko Box
Motor Lead Quantity/Wire Size	3 @ 10 AWG
Motor Lead Termination	Flying Leads
Motor Standards	NEMA
Motor Type	3740M
Mounting Arrangement	F1
Number of Poles	4
Overall Length	17.45 IN
Power Factor	82
Product Family	General Purpose
Pulley End Bearing Type	Ball
Pulley Face Code	Standard
Pulley Shaft Indicator	Standard
Rodent Screen	None
RoHS Status	ROHS COMPLIANT
Service Factor	1.15
Shaft Diameter	1.375 IN
Shaft Extension Location	Pulley End
Shaft Ground Indicator	No Shaft Grounding
Shaft Rotation	Reversible
Shaft Slinger Indicator	No Slinger
Speed	1770 rpm
Speed Code	Single Speed
Starting Method	Direct on line
Thermal Device - Bearing	None
Thermal Device - Winding	None
Vibration Sensor Indicator	No Vibration Sensor
Winding Thermal 1	None
Winding Thermal 2	None

Nameplate

NP2094E06B03									
CAT.NO.	EHM3313T-8								
SPEC.	37J637T937G1								
HP	10								
VOLTS	200								
AMPS	29.5								
RPM	1770								
FRAME	215T		HZ	60		PH	3		
SER.F.	1.15	CODE	J	DES	A	CL	F		
NEMA-NOM-EFF	91.7	PF	80						
RATING	40C AMB-CONT								
CC	010A		USABLE AT 208V				N/A		
DE	6307	ODE	6206						
AUTO	N	MANUAL	N	NONE	Y				
ENCL	OPSB	SN							
BLANK									

AC Induction Motor Performance Data

Record # 17618

Typical performance - not guaranteed values

Winding: 37WGT937-R001		Type: 3740M	Enclosure: OPSB
Nameplate Data		200 V, 60 Hz: Single Voltage Motor	
Rated Output (HP)	10	Full Load Torque	29.7 LB-FT
Volts	200	Start Configuration	direct on line
Full Load Amps	29.5	Breakdown Torque	90.9 LB-FT
R.P.M.	1770	Pull-up Torque	49.2 LB-FT
Hz	60 Phase	Locked-rotor Torque	54.9 LB-FT
NEMA Design Code	A KVA Code	Starting Current	215 A
Service Factor (S.F.)	1.15	No-load Current	14 A
NEMA Nom. Eff.	91.7 Power Factor	Line-line Res. @ 25°C	0.19 Ω
Rating - Duty	40C AMB-CONT	Temp. Rise @ Rated Load	34°C
S.F. Amps		Temp. Rise @ S.F. Load	42°C
		Locked-rotor Power Factor	38
		Rotor inertia	0.984 lb-ft ²

Load Characteristics 200 V, 60 Hz, 10 HP

% of Rated Load	25	50	75	100	125	150	S.F.
Power Factor	40	62	74	80	83	84	82
Efficiency	87	91.6	92.2	91.8	90.8	89.6	91.2
Speed	1793	1786	1778	1770	1761	1751	1765
Line amperes	15.4	19.1	23.8	29.5	35.8	43	33.3

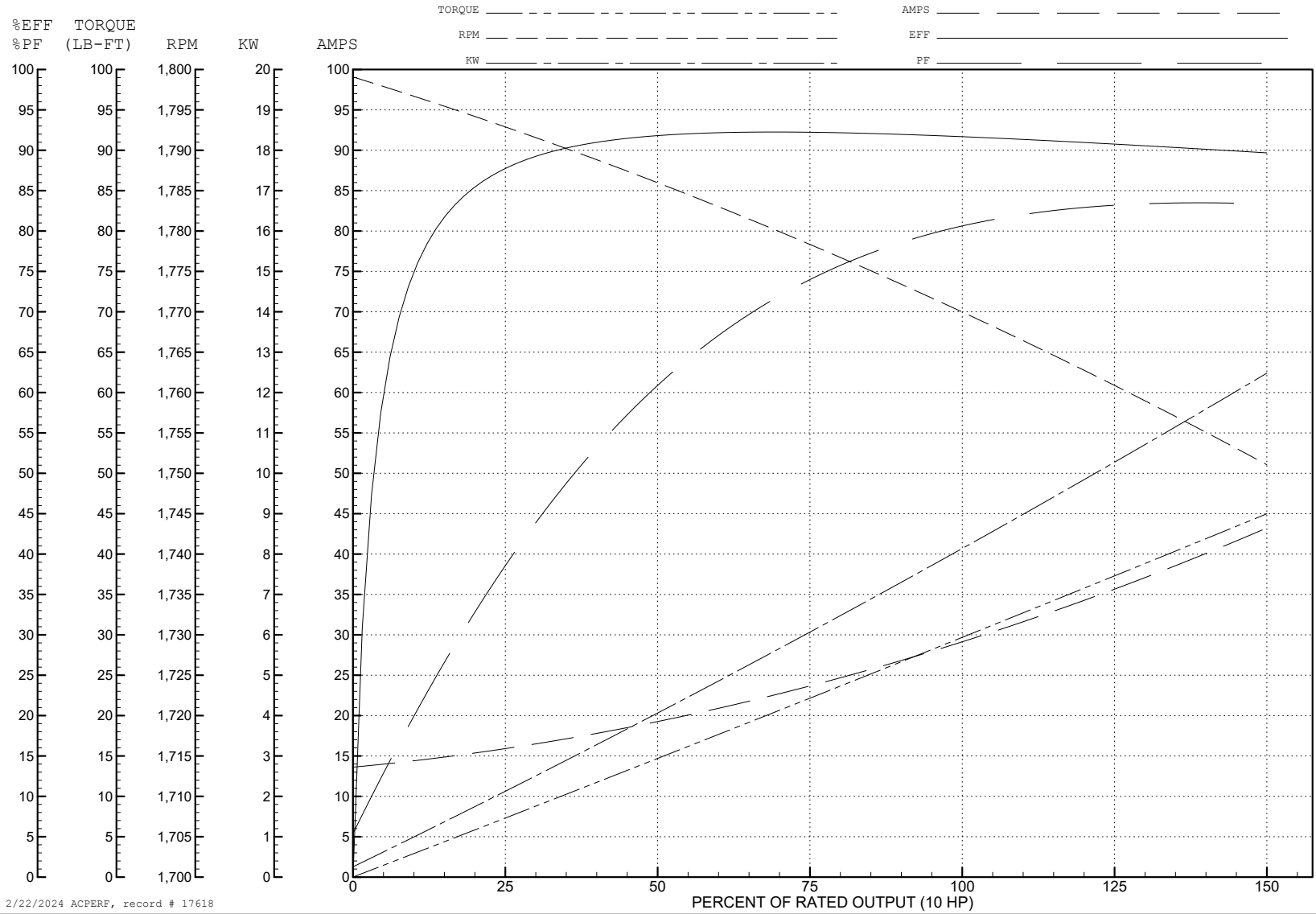
ABB Motors and Mechanical Inc.

WINDING # 37WGT937

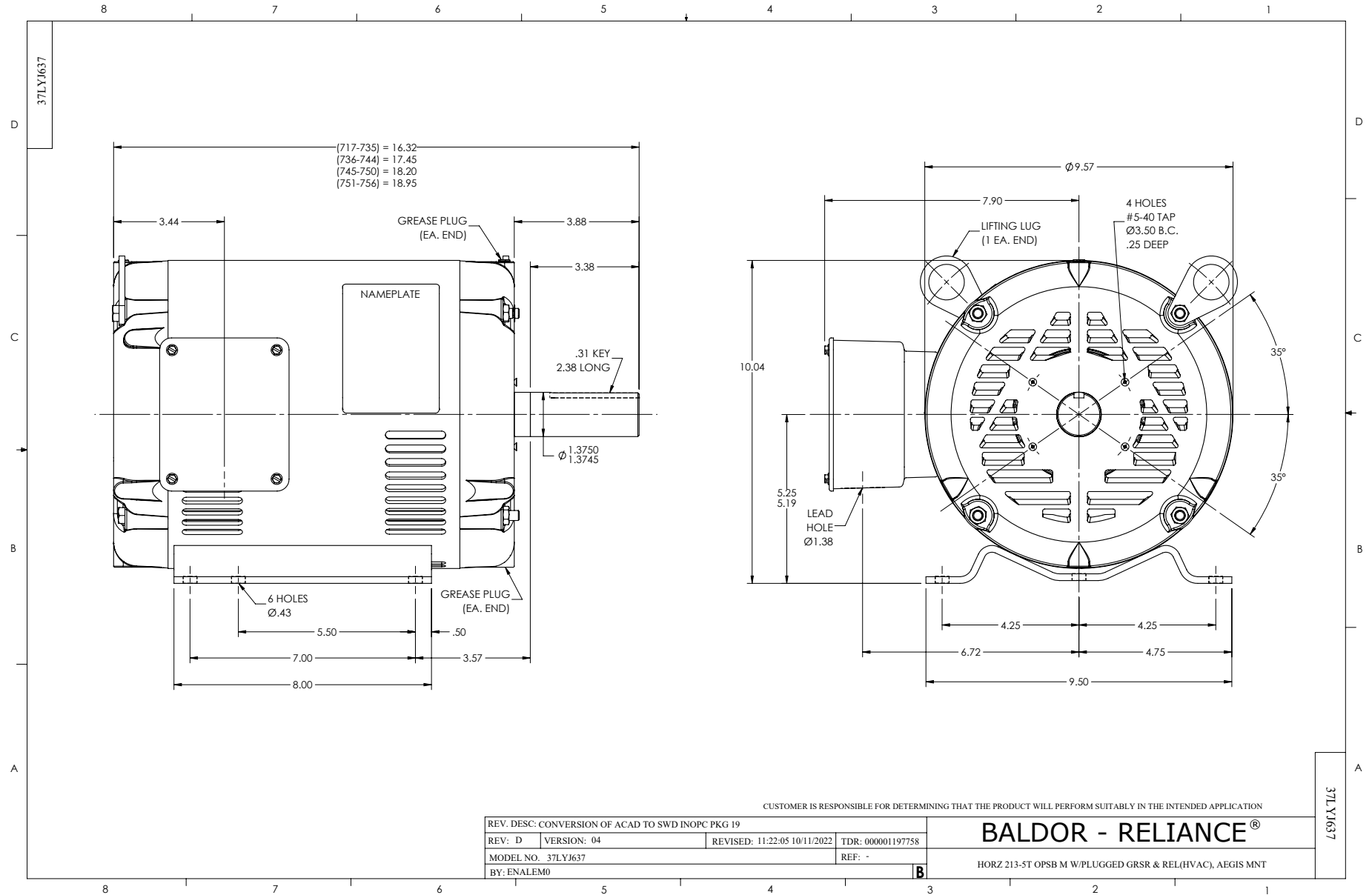
Typical performance - not guaranteed values.

10 HP 3 PH 60 HZ 1770 RPM 200 V 3740M

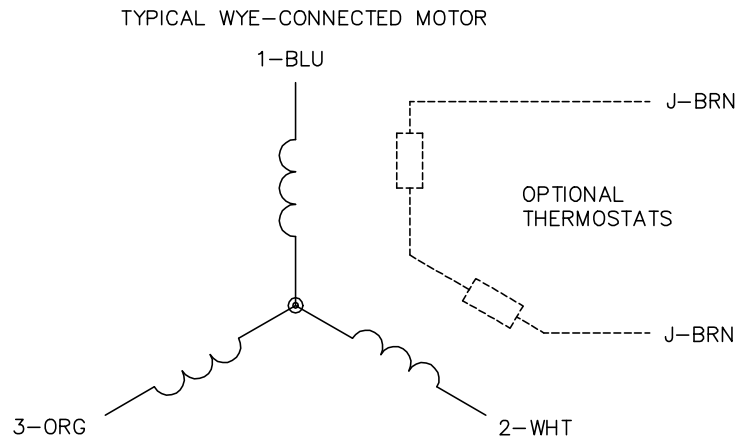
TORQUES (LB-FT): PO=90.9 PU=49.2 LR=54.9 LRA=215



2/22/2024 ACPERF, record # 17618



CD0006



NOTES:

1. THREE LEAD MOTOR MAY BE EITHER WYE CONNECTED OR DELTA CONNECTED.
2. INTERCHANGE ANY TWO LINE LEADS TO REVERSE ROTATION.
3. OPTIONAL THERMOSTATS ARE PROVIDED WHEN SPECIFIED.
4. ACTUAL NUMBER OF INTERNAL PARALLEL CIRCUITS MAY VARY.
5. LEAD COLORS ARE OPTIONAL. LEADS MUST BE NUMBERED AS SHOWN.

CD0006

REV. DESC: ADD CLASS CONN00000007		
REV. LTR: E	VERSION: 01	TDR: 000001099922
FILE: \AAA\00005\141	REVISED: 10:24:49 02/19/2019	BY: ENBRIRO
MTL: -		© □

BALDOR - RELIANCE®

3PH, SV, 3 LEADS, WYE OR DELTA CONNECTED

SH 1 of 1