

BALDOR • RELIANCE

Customer information packet

EHM2536T

30HP, 1180RPM, 3PH, 60HZ, 326T, 4084M, OPSB, F1

Copyright © All product information within this document is subject to ABB Motors and Mechanical Inc. copyright © protection, unless otherwise noted.

4/21/2026 10:16:03 PM

Specifications

Enclosure	OPSB
Frame	326T
Frame Material	Steel
Frequency	60.00 Hz
Motor Letter Type	Three Phase
Output @ Frequency	30.000 HP @ 60 HZ
Phase	3
Synchronous Speed @ Frequency	1200 RPM @ 60 HZ
Voltage @ Frequency	230.0 V @ 60 HZ 460.0 V @ 60 HZ
Agency Approvals	CSA UR
Ambient Temperature	40 °C
Auxiliary Box	NO AUXILLARY BOX
Auxiliary Box Lead Termination	None
Base Indicator	Rigid
Bearing Grease Type	Polyrex EM (-20F +300F)
Blower	None
Current @ Voltage	38.000 A @ 460.0 V 76.000 A @ 230.0 V 80.000 A @ 208.0 V
Design Code	A
Drip Cover	No Drip Cover
Duty Rating	CONT
Efficiency @ 100% Load	93.6 %
Feedback Device	NO FEEDBACK
Front Face Code	Standard
Front Shaft Indicator	None
Heater Indicator	No Heater
High Voltage Full Load Amps	38.0 a
Insulation Class	F
Inverter Code	Inverter Ready

Part detail

Revision	J
Type	AC
Mech. spec.	40E329
Base	
Status	PRD/A
Elec. spec.	40WGX122
Layout	40LYE329
Eff. date	07-10-2024
CD Diagram	CD0005
Poles	06
Leads	9#8
Proprietary	False
Created date	10-21-2013

KVA Code	H
Lifting Lugs	Standard Lifting Lugs
Locked Bearing Indicator	No Locked Bearing
Motor Lead Exit	Ko Box
Motor Lead Quantity/Wire Size	9 @ 8 AWG
Motor Lead Termination	Flying Leads
Motor Standards	NEMA
Motor Type	4084M
Mounting Arrangement	F1
Number of Poles	6
Overall Length	28.69 IN
Power Factor	79
Product Family	General Purpose
Pulley End Bearing Type	Ball
Pulley Face Code	Standard
Pulley Shaft Indicator	Standard
Rodent Screen	None
Service Factor	1.15
Shaft Diameter	2.125 IN
Shaft Extension Location	Pulley End
Shaft Ground Indicator	Mounting Provisions Only
Shaft Rotation	Reversible
Shaft Slinger Indicator	No Slinger
Speed	1180 rpm
Speed Code	Single Speed
Starting Method	Direct on line
Thermal Device - Bearing	None
Thermal Device - Winding	None
Vibration Sensor Indicator	No Vibration Sensor

Nameplate

NP2094E06B03									
CAT.NO.	EHM2536T								
SPEC.	40E329X122G1								
HP	30								
VOLTS	230/460								
AMPS	78/39								
RPM	1180								
FRAME	326T	HZ	60	PH	3				
SER.F.	1.15	CODE	H	DES	A	CL	F		
NEMA-NOM-EFF	93.6	PF	77						
RATING	40C AMB-CONT								
CC	010A	USABLE AT 208V					N/A		
DE	6312	ODE	6309						
AUTO		MANUAL		NONE					
ENCL	OPSB	SN							
BLANK									

AC Induction Motor Performance Data

Record # 66226

Typical performance - not guaranteed values

Winding: 40WGX122-R001		Type: 4084M		Enclosure: OPSB	
Nameplate Data			460 V, 60 Hz: High Voltage Connection		
Rated Output (HP)	30	Full Load Torque	133.3 LB-FT		
Volts	230/460	Start Configuration	direct on line		
Full Load Amps	78/39	Breakdown Torque	417 LB-FT		
R.P.M.	1180	Pull-up Torque	187 LB-FT		
Hz	60 Phase	3	Locked-rotor Torque	233 LB-FT	
NEMA Design Code	A KVA Code	H	Starting Current	267 A	
Service Factor (S.F.)	1.15	No-load Current	18.1 A		
NEMA Nom. Eff.	93.6 Power Factor	77	Line-line Res. @ 25°C	0.2452 Ω	
Rating - Duty	40C AMB-CONT	Temp. Rise @ Rated Load	40°C		
S.F. Amps		Temp. Rise @ S.F. Load	49°C		
		Locked-rotor Power Factor	28.6		

Load Characteristics 460 V, 60 Hz, 30 HP

% of Rated Load	25	50	75	100	125	150	S.F.
Power Factor	39	60	72	77	80	81	79
Efficiency	89.6	93.2	93.8	93.6	92.9	92.1	93.2
Speed	1196.1	1192.3	1188.4	1184.2	1179.4	1174.2	1181
Line amperes	20.2	25	31.5	39	47.4	56.7	44

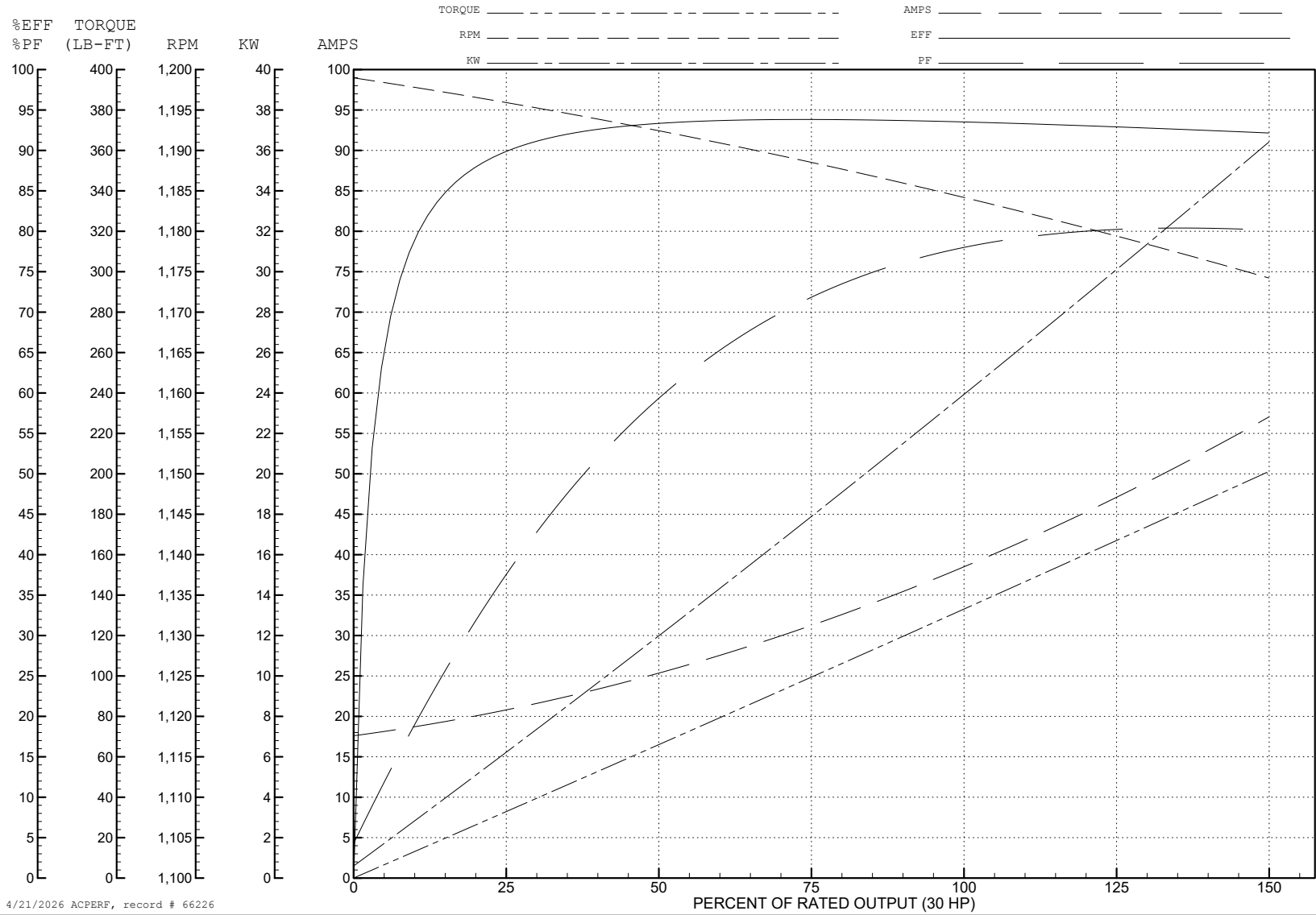
ABB Motors and Mechanical Inc.

WINDING # 40WG122

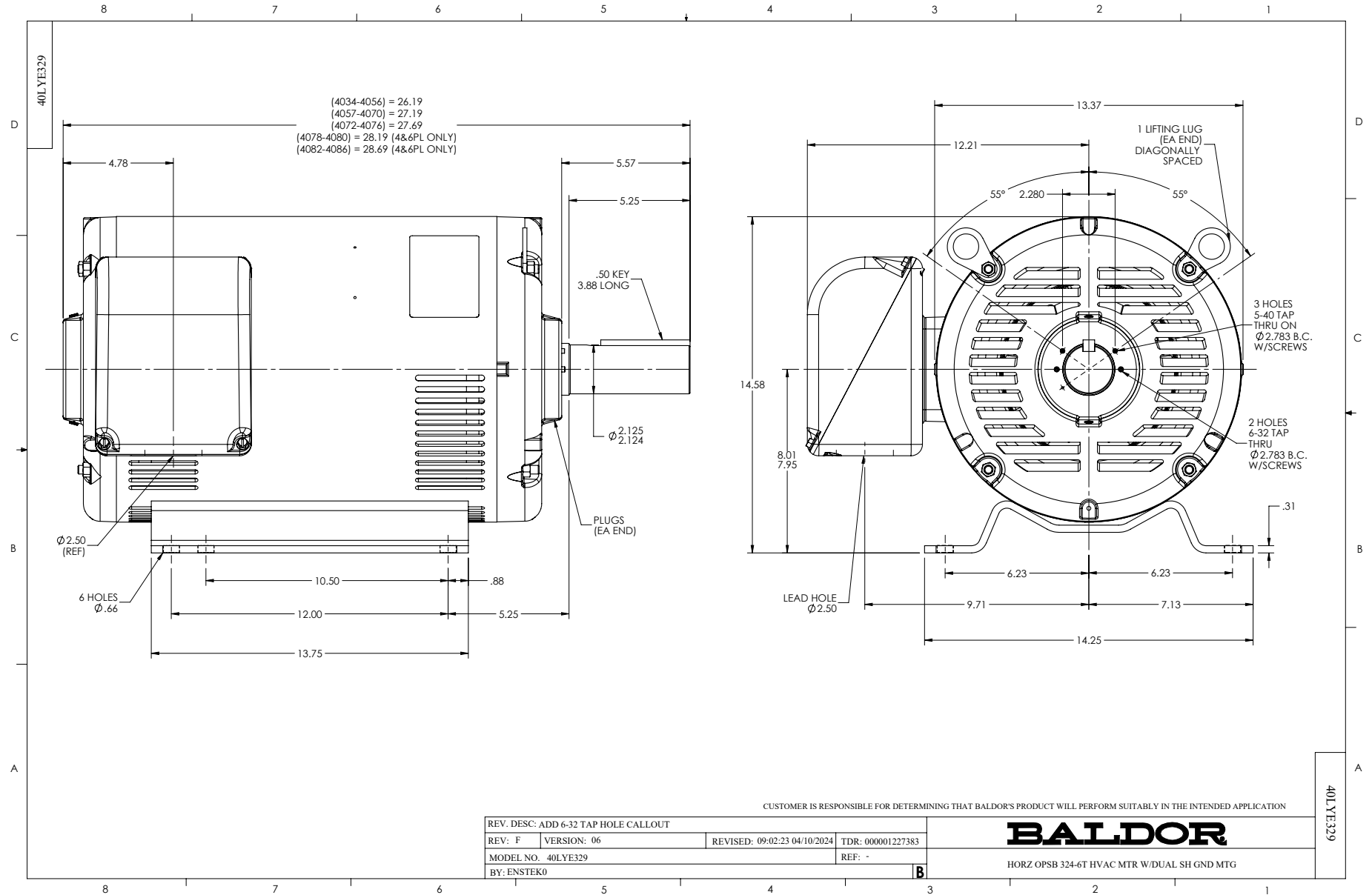
Typical performance - not guaranteed values.

30 HP 3 PH 60 HZ 1180 RPM 460 V 4084M

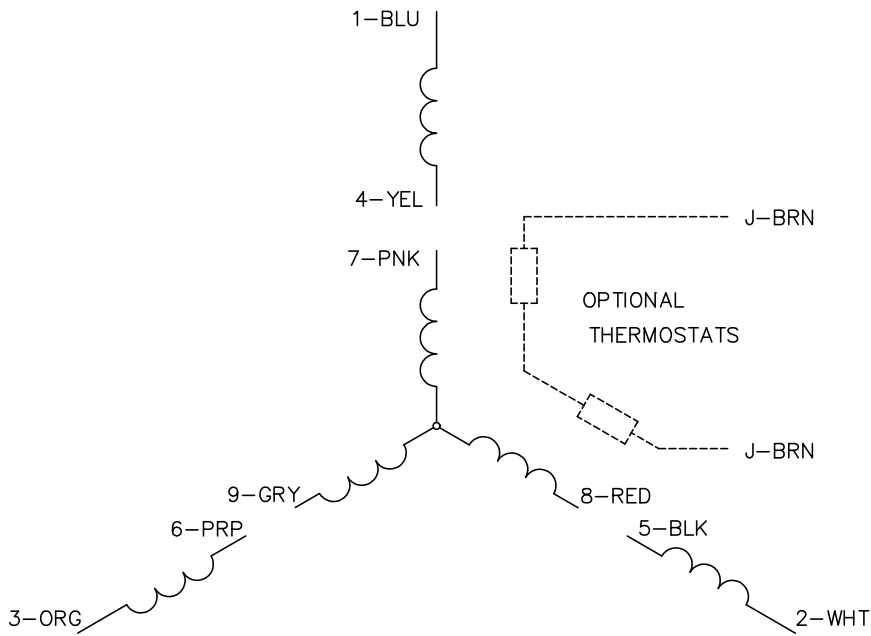
TORQUES (LB-FT): PO=417 PU=187 LR=233 LRA=267



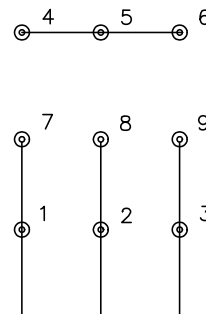
4/21/2026 ACPERF, record # 66226



CD0005

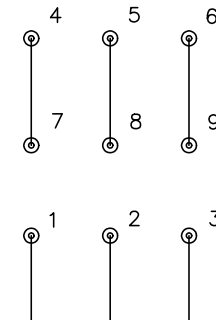


LOW VOLTAGE
(2Y)



LINE

HIGH VOLTAGE
(1Y)



LINE

NOTES:

1. INTERCHANGE ANY TWO LINE LEADS TO REVERSE ROTATION.
2. OPTIONAL THERMOSTATS ARE PROVIDED WHEN SPECIFIED.
3. ACTUAL NUMBER OF INTERNAL PARALLEL CIRCUITS MAY BE A MULTIPLE OF THOSE SHOWN ABOVE.
4. LEAD COLORS ARE OPTIONAL. LEADS MUST ALWAYS BE NUMBERED AS SHOWN.

CD0005

REV. DESC: REVISE TO SHOW OPTIONAL COLORS			
REV. LTR: E	BY: JLP	REVISED: 01/19/99 10:15	TDR: 0171435
S00000		FILE: AAA00005140	MDL: -
		MTL: -	

BALDOR ELECTRIC Co.

3PH, DV, 9 LEADS