



Customer information packet

EGDM4110T

40HP, 1775RPM, 3PH, 60HZ, 324TZ, 1254M, TEFC, F

Class - None

Division - Not Applicable

Specifications

| | |
|--------------------------------|---|
| Enclosure | TEFC |
| Frame | 324TZ |
| Frame Material | Iron |
| Frequency | 60.00 Hz |
| Motor Letter Type | Three Phase |
| Output @ Frequency | 40.000 HP @ 60 HZ |
| Phase | 3 |
| Synchronous Speed @ Frequency | 1800 RPM @ 60 HZ |
| Voltage @ Frequency | 460.0 V @ 60 HZ 230.0 V @ 60 HZ |
| XP Class and Group | None |
| XP Division | Not Applicable |
| Agency Approvals | CSA CSA EEV UR |
| Ambient Temperature | 40 °C |
| Auxillary Box | No Auxillary Box |
| Auxillary Box Lead Termination | None |
| Base Indicator | Rigid |
| Bearing Grease Type | Polyrex EM (-20F +300F) |
| Blower | None |
| Current @ Voltage | 48.000 A @ 460.0 V 96.000 A @ 230.0 V 102.000 A @ 208.0 V |
| Design Code | A |
| Drip Cover | No Drip Cover |
| Duty Rating | CONT |
| Efficiency @ 100% Load | 94.1 % |
| Electrically Isolated Bearing | Not Electrically Isolated |
| Feedback Device | NO FEEDBACK |
| Front Face Code | Standard |
| Front Shaft Indicator | None |

Part detail

| | |
|--------------|----------------|
| Revision | M |
| Type | AC |
| Mech. spec. | 12G986 |
| Base | |
| Status | PRD/A |
| Elec. spec. | 12WGY276 |
| Layout | 12LYG986 |
| Eff. date | 02-16-2022 |
| CD Diagram | CD0180 |
| Poles | 04 |
| Leads | 9#8 72" long Y |
| Proprietary | False |
| Created date | 04-22-2015 |

| | |
|-------------------------------|-----------------------|
| Heater Indicator | No Heater |
| High Voltage Full Load Amps | 48.0 a |
| Insulation Class | F |
| Inverter Code | Inverter Ready |
| KVA Code | H |
| Lifting Lugs | Standard Lifting Lugs |
| Locked Bearing Indicator | Locked Bearing |
| Motor Lead Exit | Ko Box |
| Motor Lead Quantity/Wire Size | 9 @ 8 AWG |
| Motor Lead Termination | Flying Leads |
| Motor Standards | NEMA |
| Motor Type | 1254M |
| Mounting Arrangement | F1 |
| Number of Poles | 4 |
| Overall Length | 31.28 IN |
| Power Factor | 82 |
| Product Family | General Purpose |
| Pulley End Bearing Type | Sealed Bearing |
| Pulley Face Code | Standard |
| Pulley Shaft Indicator | Standard |
| Rodent Screen | None |
| Service Factor | 1.15 |
| Shaft Diameter | 2.125 IN |
| Shaft Extension Location | Pulley End |
| Shaft Ground Indicator | No Shaft Grounding |
| Shaft Rotation | Reversible |
| Shaft Slinger Indicator | Shaft Slinger |
| Speed | 1775 rpm |
| Speed Code | Single Speed |
| Starting Method | Direct on line |
| Thermal Device - Bearing | NONE (OLD) |
| Thermal Device - Winding | None |
| Vibration Sensor Indicator | No Vibration Sensor |
| Winding Thermal 1 | None |

Winding Thermal 2

None

Nameplate

| NP3126L | | | | | | | | | | |
|---------------------|--------------|-----------------------|------|------------|---|-----------|---|-----|--|--|
| CAT.NO. | EGDM4110T | | | | | | | | | |
| SPEC. | 12G986Y276G1 | | | | | | | | | |
| HP | 40 | | | | | | | | | |
| VOLTS | 230/460 | | | | | | | | | |
| AMP | 96/48 | | | | | | | | | |
| RPM | 1775 | | | | | | | | | |
| FRAME | 324TZ | HZ | 60 | PH | 3 | | | | | |
| SER.F. | 1.15 | CODE | H | DES | A | CL | F | | | |
| NEMA-NOM-EFF | 94.1 | PF | 82 | | | | | | | |
| RATING | 40C AMB-CONT | | | | | | | | | |
| CC | 010A | USABLE AT 208V | | | | | | 102 | | |
| DE | 6312 | ODE | 6311 | | | | | | | |
| ENCL | TEFC | SN | | | | | | | | |
| | SFA 109/54.5 | | | | | | | | | |

AC Induction Motor Performance Data

Record # 31673

Typical performance - not guaranteed values

| Winding: 12WGY276-R001 | | Type: 1254M | Enclosure: TEFC | |
|------------------------|-------------------|---------------------------|--|-----------|
| Nameplate Data | | | 460 V, 60 Hz: High Voltage Connection | |
| Rated Output (HP) | 40 | Full Load Torque | 119 LB-FT | |
| Volts | 230/460 | Start Configuration | direct on line | |
| Full Load Amps | 96/48 | Breakdown Torque | 396 LB-FT | |
| R.P.M. | 1775 | Pull-up Torque | 198 LB-FT | |
| Hz | 60 Phase | 3 | Locked-rotor Torque | 222 LB-FT |
| NEMA Design Code | A KVA Code | H | Starting Current | 347 A |
| Service Factor (S.F.) | 1.15 | No-load Current | 21.03 A | |
| NEMA Nom. Eff. | 94.1 Power Factor | 82 | Line-line Res. @ 25°C | 0.139 Ω |
| Rating - Duty | 40C AMB-CONT | Temp. Rise @ Rated Load | 54°C | |
| S.F. Amps | | Temp. Rise @ S.F. Load | 66°C | |
| | | Locked-rotor Power Factor | 27.1 | |
| | | Rotor inertia | 7.19 lb-ft ² | |

Load Characteristics 460 V, 60 Hz, 40 HP

| % of Rated Load | 25 | 50 | 75 | 100 | 125 | 150 | S.F. |
|-----------------|-------|------|-------|-------|-------|-------|------|
| Power Factor | 45 | 67 | 77 | 82 | 84 | 85 | 83 |
| Efficiency | 89.8 | 93.4 | 94.1 | 94.4 | 93.9 | 93.1 | 94.1 |
| Speed | 1794 | 1788 | 1783 | 1777 | 1771 | 1765 | 1773 |
| Line amperes | 23.93 | 30.4 | 39.12 | 48.68 | 59.71 | 71.22 | 55.3 |

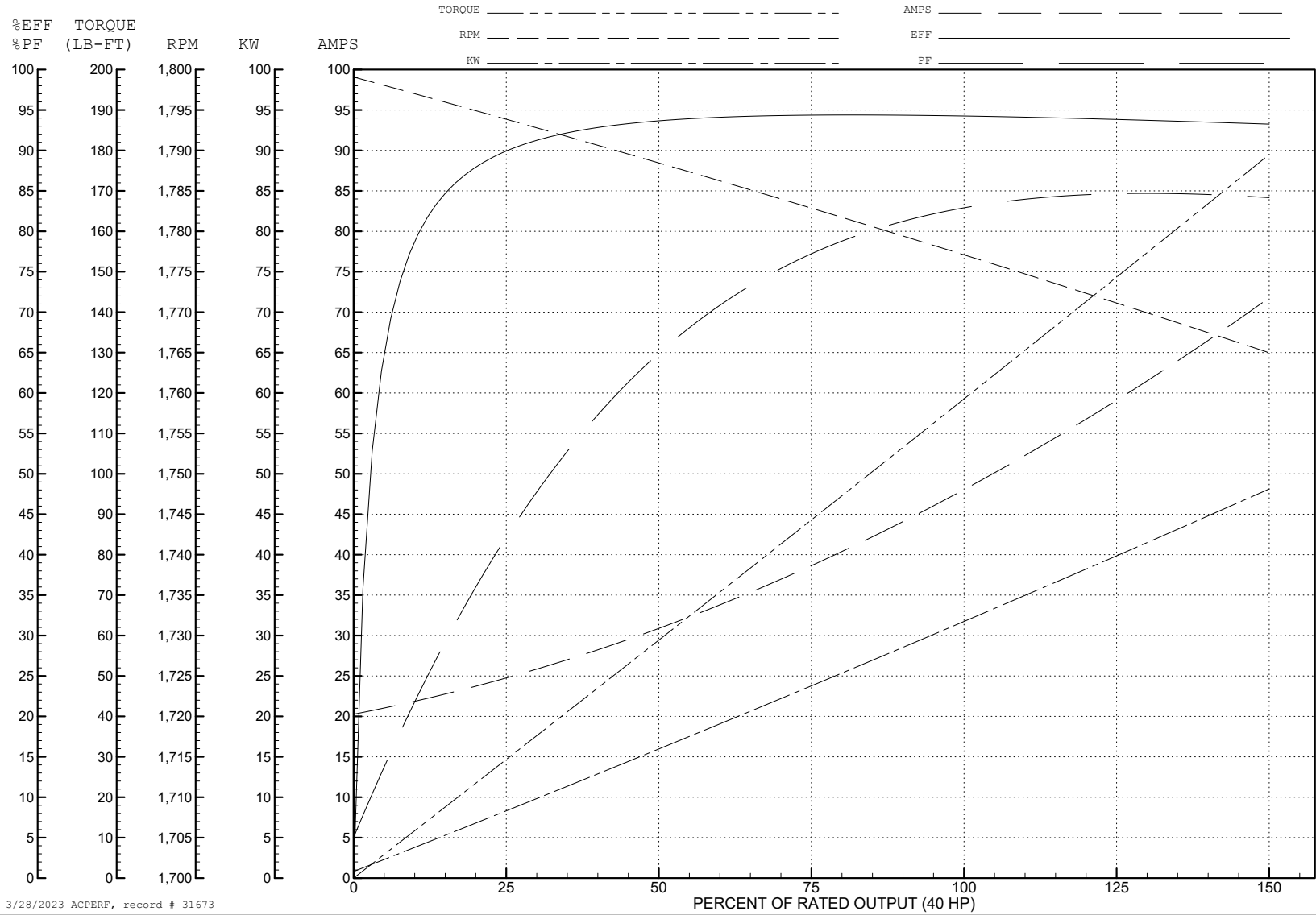
ABB Motors and Mechanical Inc.

WINDING # 12WGY276

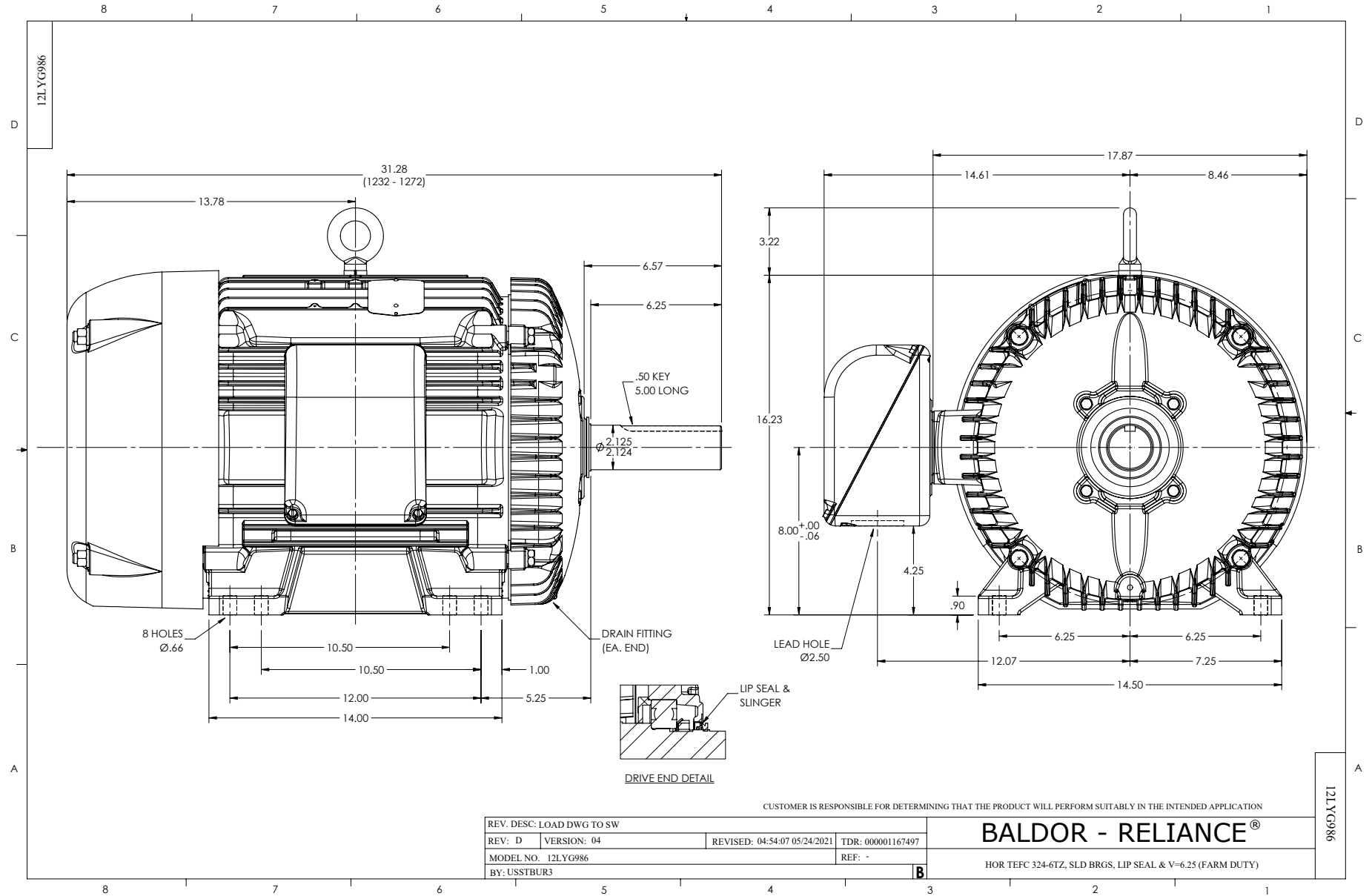
Typical performance - not guaranteed values.

40 HP 3 PH 60 HZ 1775 RPM 460 V 1254M

TORQUES (LB-FT): PO=396 PU=198 LR=222 LRA=347



3/28/2023 ACPERF, record # 31673



CD0180



LOW VOLTAGE
(2D)



HIGH VOLTAGE
(1D)



NOTES:

1. INTERCHANGE ANY TWO LINE LEADS TO REVERSE ROTATION.
2. OPTIONAL THERMOSTATS ARE PROVIDED WHEN SPECIFIED.
3. ACTUAL NUMBER OF INTERNAL PARALLEL CIRCUITS MAY BE A MULTIPLE OF THOSE SHOWN ABOVE.
4. LEAD COLORS ARE OPTIONAL. LEADS MUST ALWAYS BE NUMBERED AS SHOWN.

CD0180

| | | |
|-----------------------------------|--------------------------------|-------------------|
| REV. DESC: ADD CLASS CONN00000007 | | |
| REV. LTR: D | VERSION: 01 | TDR: 000001099922 |
| FILE: \AAA\00005\148 | REVISED: 10: 25: 29 02/19/2019 | BY: ENBRIRO |
| MTL: - | © □ | |

BALDOR - RELIANCE®

3PH, DV, 9 LEADS, DELTA CONNECTION

SH 1 of 1