

ABB BALDOR RELIANCE III

Customer information packet

EGDM3311T

7.5HP, 1770RPM, 3PH, 60HZ, 213TZ, 3734M, OPSB

Class - None

Division - Not Applicable

Specifications

Enclosure	OPSB
Frame	213TZ
Frame Material	Steel
Frequency	60.00 Hz
Haz Area Class and Group	None
Haz Area Division	Not Applicable
Motor Letter Type	Three Phase
Output @ Frequency	7.500 HP @ 60 HZ
Phase	3
Synchronous Speed @ Frequency	1800 RPM @ 60 HZ
Voltage @ Frequency	230.0 V @ 60 HZ 208.0 V @ 60 HZ 460.0 V @ 60 HZ
Agency Approvals	CSA EEV NEMA PREMIUM UR CSA
Ambient Temperature	40 °C
Auxiliary Box	NO AUXILLARY BOX
Auxiliary Box Lead Termination	None
Base Indicator	Rigid
Bearing Grease Type	Polyrex EM (-20F +300F)
Blower	None
Current @ Voltage	9.800 A @ 460.0 V 20.600 A @ 208.0 V 19.600 A @ 230.0 V
Design Code	A
Drip Cover	No Drip Cover
Duty Rating	CONT
Efficiency @ 100% Load	91.0 %
Electrically Isolated Bearing	Not Electrically Isolated
Feedback Device	NO FEEDBACK

Part Detail

Revision	C
Type	AC
Mech. spec.	37N688
Base	
Status	PRD/A
Elec. spec.	37WGL863
Layout	37LYN688
Eff. date	11-27-2024
CD Diagram	CD0005
Poles	04
Leads	9#14
Proprietary	False
Created date	01-28-2021

Front Shaft Indicator	None
Heater Indicator	No Heater
High Voltage Full Load Amps	9.8 a
Insulation Class	F
Inverter Code	Inverter Ready
KVA Code	J
Lifting Lugs	Standard Lifting Lugs
Locked Bearing Indicator	No Locked Bearing
Motor Lead Quantity/Wire Size	9 @ 14 AWG
Motor Lead Termination	Flying Leads
Motor Standards	NEMA
Motor Type	3734M
Mounting Arrangement	F1
Number of Poles	4
Overall Length	17.32 IN
Power Factor	79
Product Family	General Purpose
Pulley End Bearing Type	Sealed Bearing
Pulley Face Code	Standard
Pulley Shaft Indicator	Standard
Rodent Screen	Included
Service Factor	1.15
Shaft Diameter	1.375 IN
Shaft Ground Indicator	No Shaft Grounding
Shaft Rotation	Reversible
Shaft Slinger Indicator	No Slinger
Speed	1770 rpm
Speed Code	Single Speed
Starting Method	Direct on line
Thermal Device - Bearing	None
Thermal Device - Winding	Normally Closed Thermostat
Vibration Sensor Indicator	No Vibration Sensor
Winding Thermal 1	None
Winding Thermal 2	None

Nameplate

NP3126L									
CAT.NO.	EGDM3311T								
SPEC.	37N688L863G1								
HP	7.5								
VOLTS	208-230/460								
AMP	20.6/19.6/9.8								
RPM	1770								
FRAME	213TZ		HZ	60			PH	3	
SER.F.	1.15	CODE	J	DES	A	CL	F		
NEMA-NOM-EFF	91	PF	79						
RATING	40C AMB-CONT								
CC	010A								
DE	6307	ODE	6206						
ENCL	OPSB	SN							

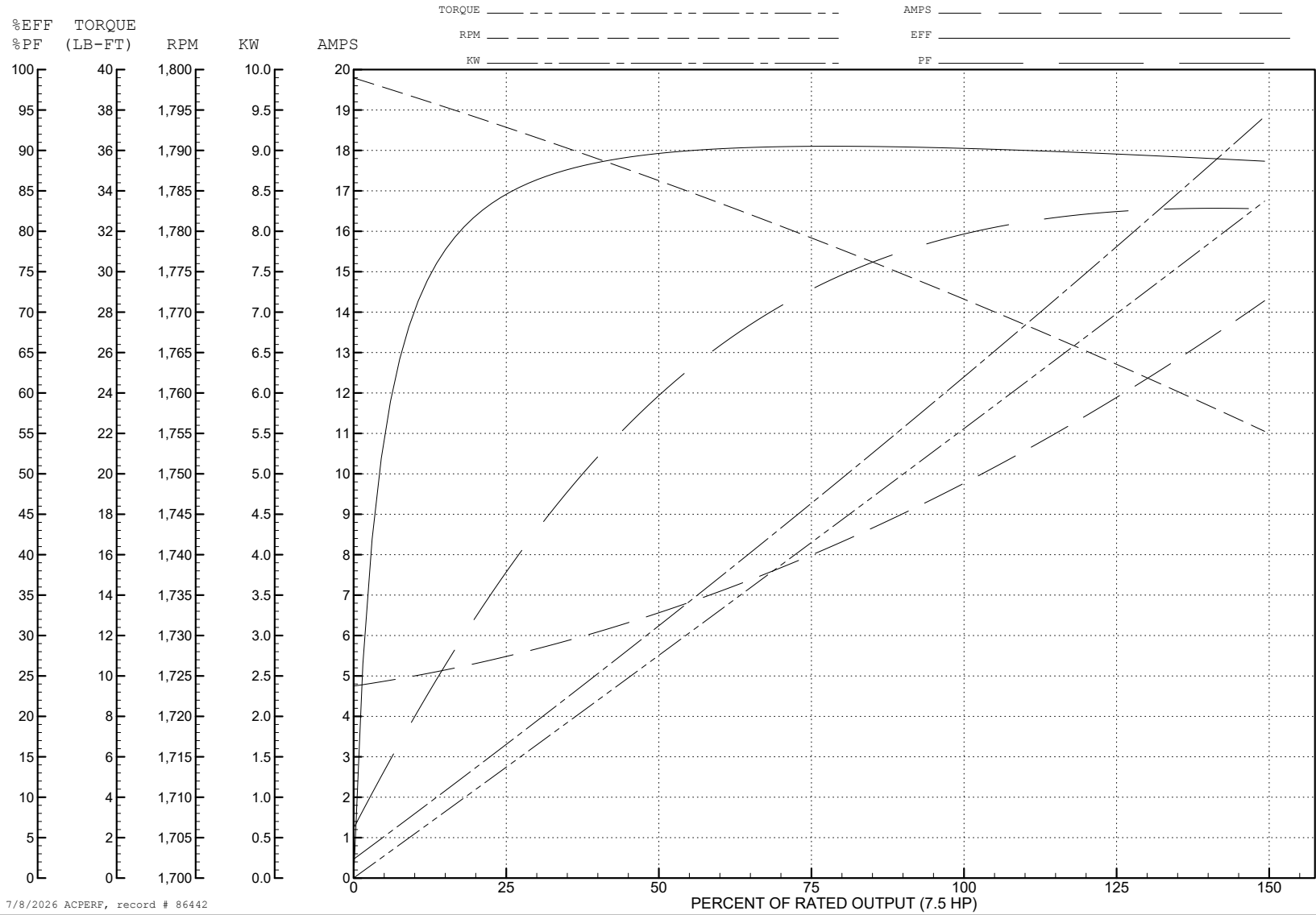
ABB Motors and Mechanical Inc.

WINDING # 37WGL863

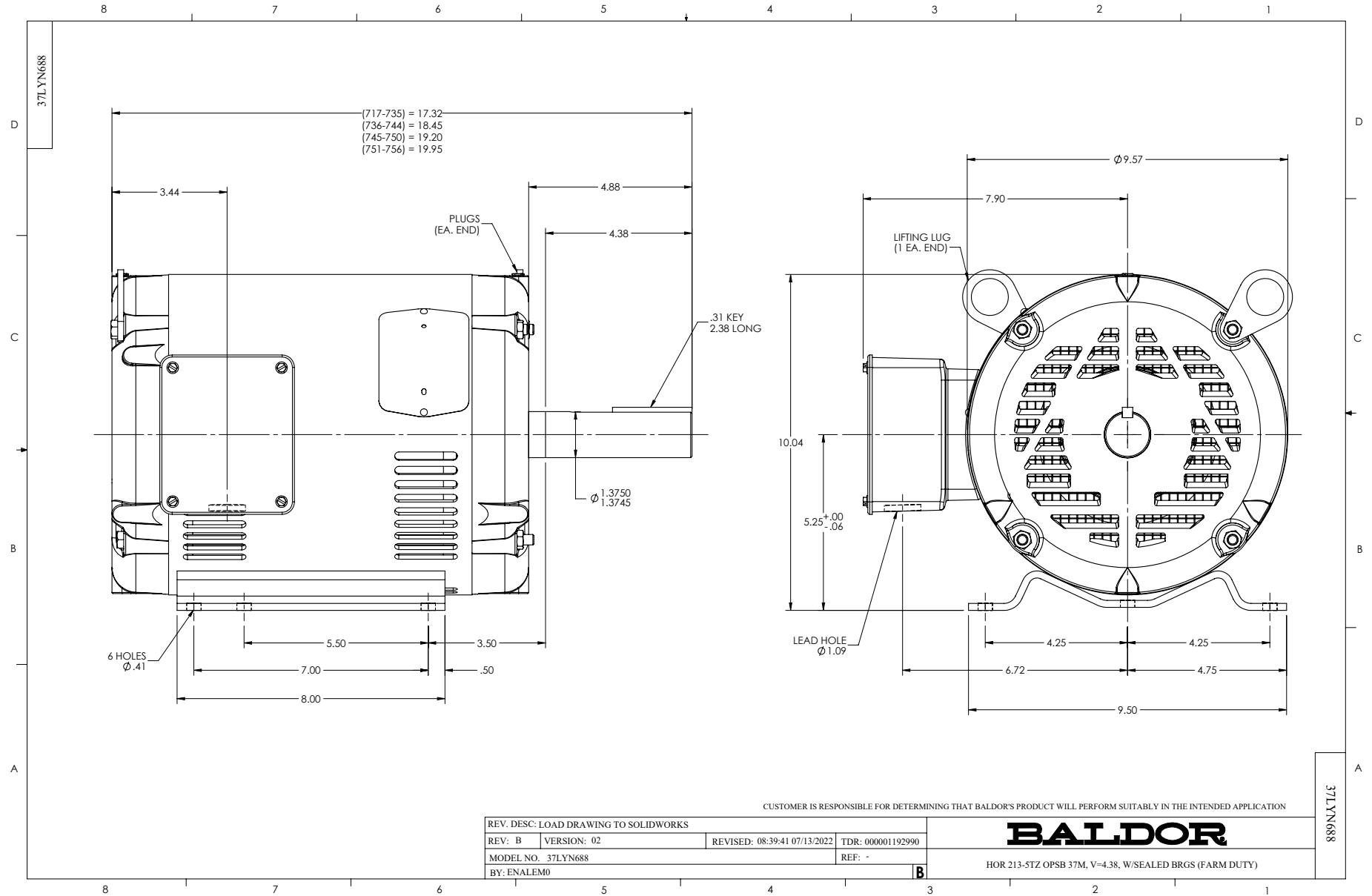
Typical performance - not guaranteed values.

7.5 HP 3 PH 60 HZ 1770 RPM 460 V 3734M

TORQUES (LB-FT): PO=74.8 PU=37.1 LR=45.4 LRA=72



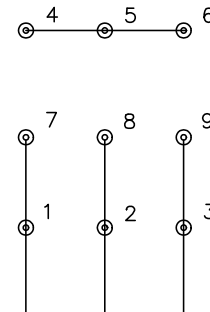
7/8/2026 ACPERF, record # 86442



CD0005

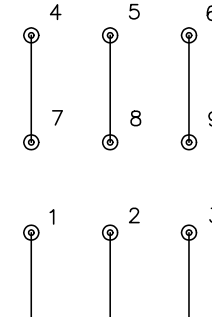


LOW VOLTAGE
(2Y)



LINE

HIGH VOLTAGE
(1Y)



LINE

NOTES:

1. INTERCHANGE ANY TWO LINE LEADS TO REVERSE ROTATION.
2. OPTIONAL THERMOSTATS ARE PROVIDED WHEN SPECIFIED.
3. ACTUAL NUMBER OF INTERNAL PARALLEL CIRCUITS MAY BE A MULTIPLE OF THOSE SHOWN ABOVE.
4. LEAD COLORS ARE OPTIONAL. LEADS MUST ALWAYS BE NUMBERED AS SHOWN.

REV. DESC: REVISE TO SHOW OPTIONAL COLORS			
REV. LTR: E	BY: JLP	REVISED: 01/19/99 10:15	TDR: 0171435
S00000		FILE: AAA00005140	MDL: -
		MTL: -	

BALDOR ELECTRIC Co.

3PH, DV, 9 LEADS

CD0005