

ABB BALDOR RELIANCE III

Customer information packet

EFM4409T-4

100HP, 1190RPM, 3PH, 60HZ, 444T, TEFC, F2

Class - None

Division - Not Applicable

Specifications

Enclosure	TEFC
Frame	444T
Frame Material	Iron
Frequency	60.00 Hz
Haz Area Class and Group	None
Haz Area Division	Not Applicable
Motor Letter Type	Three Phase
Output @ Frequency	100.000 HP @ 60 HZ
Phase	3
Synchronous Speed @ Frequency	1200 RPM @ 60 HZ
Voltage @ Frequency	460.0 V @ 60 HZ
Agency Approvals	CURUSEEV CCSAUSEEV
Ambient Temperature	40 °C
Auxiliary Box	NO AUXILLARY BOX
Base Indicator	Rigid
Bearing Grease Type	Polyrex EM (-20F +300F)
Current @ Voltage	119.000 A @ 460.0 V
Design Code	B
Drip Cover	No Drip Cover
Duty Rating	CONT
Efficiency @ 100% Load	95.0 %
Feedback Device	NO FEEDBACK
Heater Indicator	No Heater
High Voltage Full Load Amps	119.0 a
Insulation Class	F
Inverter Code	Inverter Ready
IP Rating	NONE
KVA Code	G
Lifting Lugs	No Lifting Lugs
Motor Lead Quantity/Wire Size	3 @ 2 AWG
Motor Standards	NEMA

Part Detail

Revision	L
Type	AC
Mech. spec.	
Base	
Status	PRD/A
Elec. spec.	A44WG3905
Layout	617427-007
Eff. date	09-25-2025
CD Diagram	416820-036
Poles	06
Leads	3#2
Proprietary	False
Created date	06-07-2014

Motor Type	A44064M
Mounting Arrangement	F2
Number of Poles	6
Overall Length	44.75 IN
Power Factor	82
Pulley End Bearing Type	Ball
Pulley Face Code	Standard
Service Factor	1.15
Shaft Diameter	3.375 IN
Shaft Ground Indicator	No Shaft Grounding
Shaft Rotation	Reversible
Shaft Slinger Indicator	Shaft Slinger
Speed	1190 rpm
Speed Code	Single Speed
Starting Method	Direct on line
Thermal Device - Bearing	None
Thermal Device - Winding	None

Nameplate

NP2349L

SPEC NO.	A44-5899-3905	CAT.NO.	EFM4409T-4	FRAME	444T				
HP	100	VOLTS	460	PHASE	3	DESIGN	B	TYPE	P
RPM	1190	AMPS	119	HZ	60	AMB	40	SF	1.15
DRIVE END BEARING	90BC03J30X	DUTY	CONT	INSUL.CLASS	F				
OPP D.E. BEARING	90BC03J30X	ENCL	TEFC	CODE	G				
SER.NO.		POWER FACTOR	82	NEMA-NOM-EFFICIENCY	95				
		MAX CORR KVAR	27	GUARANTEED EFFICIENCY	94.1				
		NEMA NOM/CSA QUOTED EFF							
		MOTOR WEIGHT							

NP2496L

MOBIL POLYREX EM

CUSTOMER INFORMATION PACKET		EFM4409T-4 - 100HP, 1190RPM, 3PH, 60HZ, 444T, TEFC, F2			
FRAME	HP	TYPE	PHASE/ HERTZ	RPM	VOLTS
444T	100	P	3/60	1190	460

AMPS	DUTY	AMB °C/ INSUL	S.F.	NEMA DESIGN	CODE LETTER	ENCLOSURE
119	CONT	40/F	1.15	B	G	TEFC

E/S	ROTOR	TEST S.O.	TEST DATE	STATOR RES. @25 °C OHMS (BETWEEN LINES)	
497780	418143098VE	---	---	.0547	

PERFORMANCE


LOAD	HP	AMPERES	RPM	% POWER FACTOR	% EFFICIENCY
NO LOAD	0	39.9	1200	4.01	0
1/4	25.0	55.8	1197	45.5	92.5
2/4	50.0	72.5	1194	68.0	95.0
3/4	75.0	94.3	1191	78.0	95.3
4/4	100	119	1188	82.5	95.0
5/4	125	147	1184	84.3	94.4

SPEED TORQUE

	RPM	TORQUE % FULL LOAD	TORQUE LB.-FT.	AMPERES
LOCKED ROTOR	0	142	627	730
PULL UP	168	126	558	717
BREAKDOWN	1146	266	1175	438
FULL LOAD	1188	100	442	119

AMPERES SHOWN FOR 460 VOLT CONNECTION. IF OTHER CONNECTIONS ARE AVAILABLE, THE AMPERES WILL VARY INVERSELY WITH THE RATED VOLTAGE.

TYPICAL DATA
NEMA NOMINAL EFFICIENCY = 95.0 PCT.

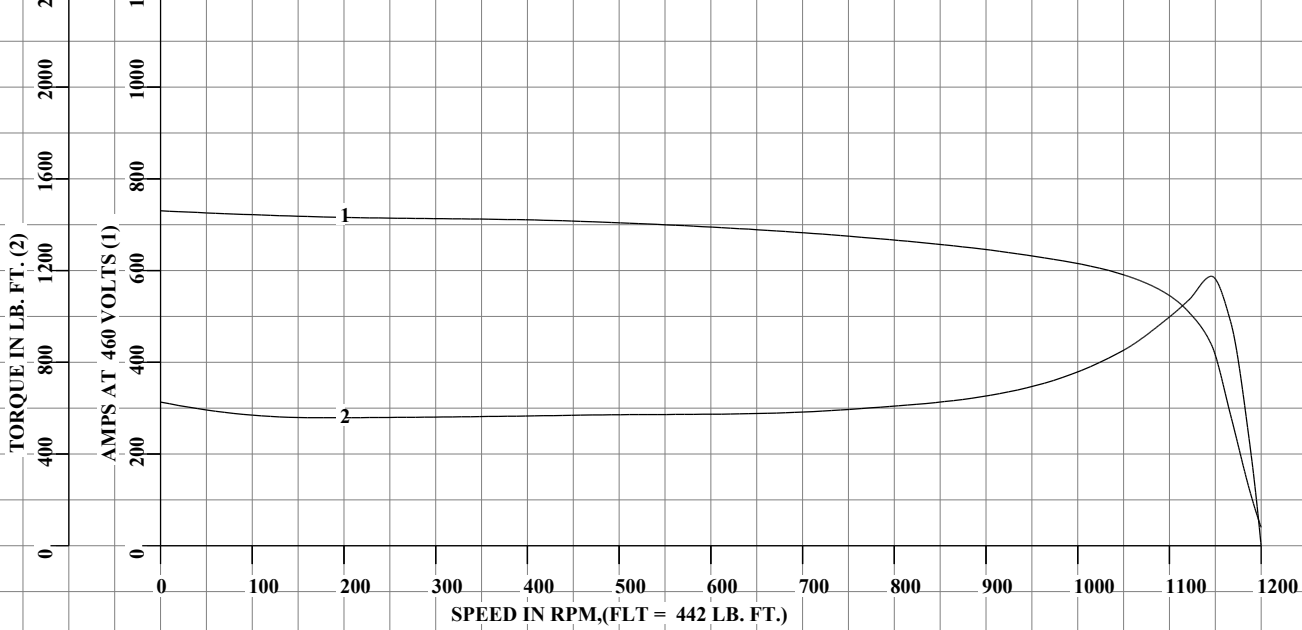
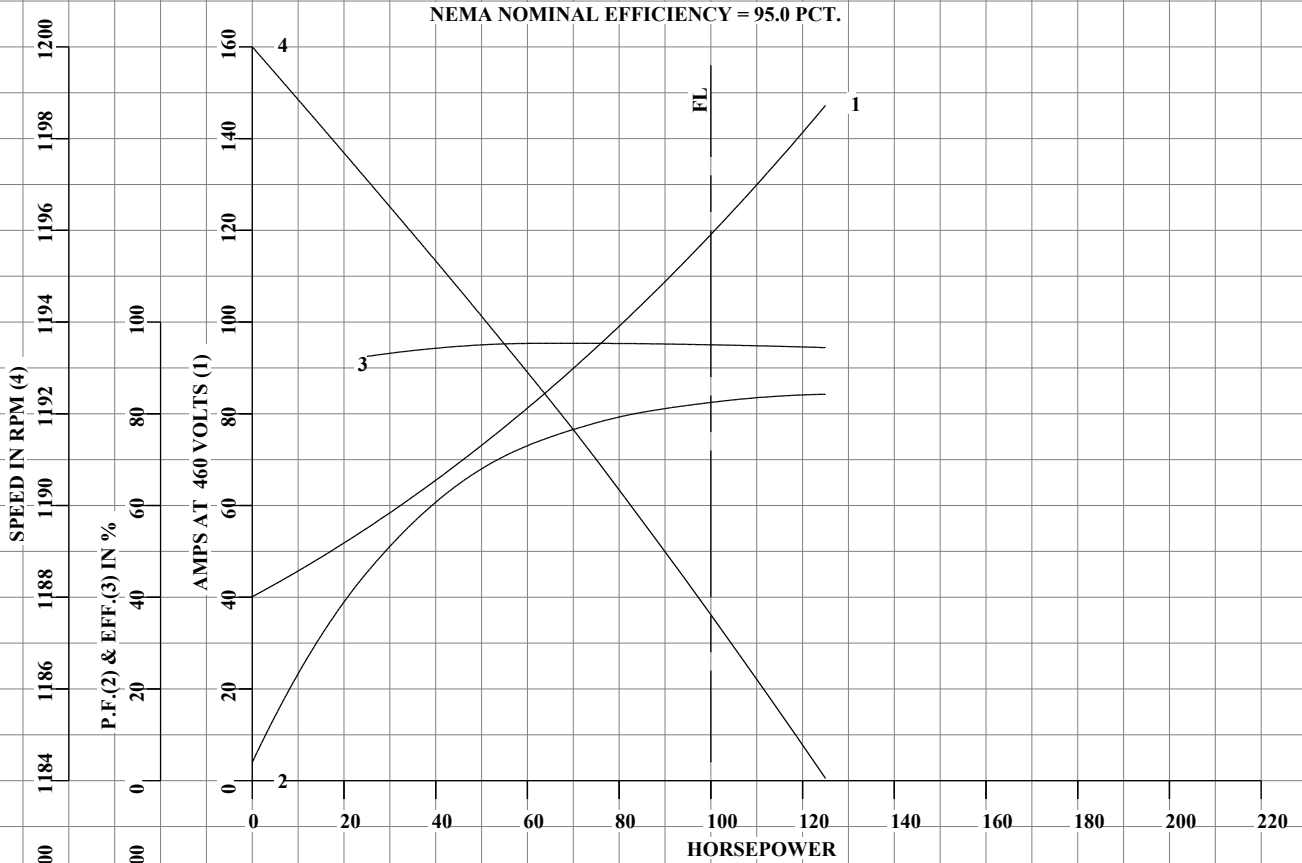
	DRAWN BY: <u>W. L. SMITH</u>	AC MOTOR PERFORMANCE DATA	A44WG3905-R001
	CHECKED BY: <u>J.J.HARRISON</u>		
	APPROVED BY: <u>W. L. SMITH</u>		DATE ISSUED 08/09/19
	DATE: <u>12/06/10</u>		

FRAME 444T
HP 100
TYPE P
PHASE / HERTZ 3/60

RPM 1190
VOLTS 460
AMPS 119
DUTY CONT
AMB °C / INSUL 40/F

S.F. 1.15
NEMA DESIGN B
CODE LETTER G
ENCLOSURE TEFC
E/S 497780

TEST S.O. TYPICAL DATA
TEST DATE ---
STATOR RES. @ 25°C .0547
OHMS (BETWEEN LINES)



AMPERES SHOWN FOR 460 VOLT CONNECTION, IF OTHER VOLTAGE CONNECTIONS ARE AVAILABLE, THE AMPERES WILL VARY INVERSELY WITH THE RATED VOLTAGE.



DRAWN BY: W. L. SMITH
 CHECKED BY: J.J.HARRISON
 APPROVED BY: W. L. SMITH
 DATE: 12/06/10

AC MOTOR
PERFORMANCE
DATA

A44WG3905-R001

ISSUE DATE 08/09/19

FRAME 444T

RPM 1190

S.F. 1.15

NEMA DESIGN B

TEST S.O. TYPICAL DATA

HP 100

VOLTS 460

CODE LETTER G

TEST DATE ---

TYPE P

AMPS 119

ENCLOSURE TEFC

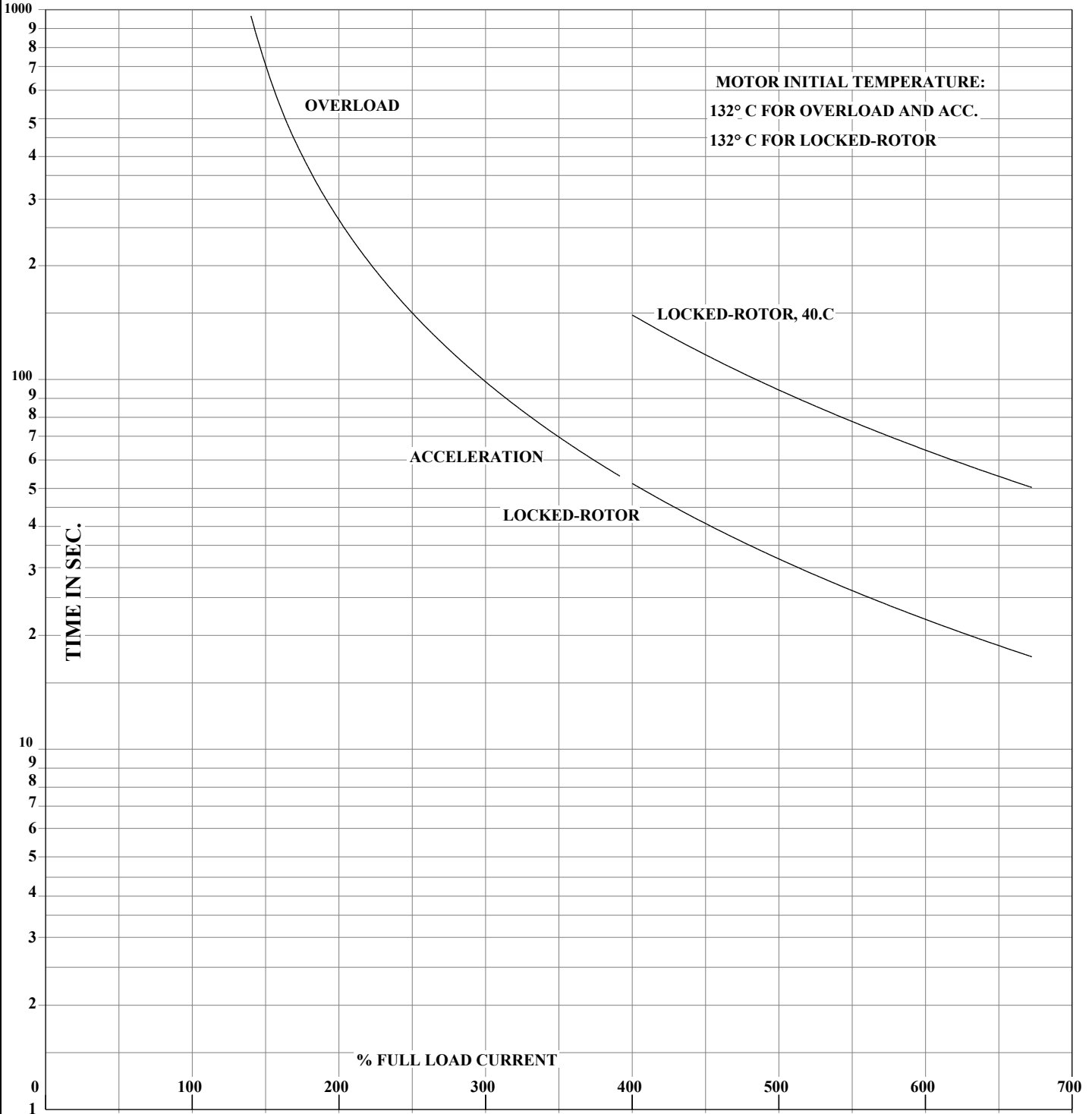
STATOR RES. @ 25°C .0547

PHASE / HERTZ 3/60

DUTY CONT

E/S 497780

OHMS (BETWEEN LINES)



THERMAL LIMIT CURVE
NEMA NOMINAL EFFICIENCY = 95.0 PCT.

AMPERES SHOWN FOR 460 VOLT CONNECTION, IF OTHER VOLTAGE CONNECTIONS ARE AVAILABLE, THE AMPERES WILL VARY INVERSELY WITH THE RATED VOLTAGE.



DRAWN BY: W. L. SMITH
CHECKED BY: J.J.HARRISON
APPROVED BY: W. L. SMITH
DATE: 12/06/10

AC MOTOR
PERFORMANCE
DATA

A44WG3905-R001

ISSUE DATE 08/09/19

DUTY MASTER ALTERNATING CURRENT MOTORS

SQUIRREL-CAGE INDUCTION

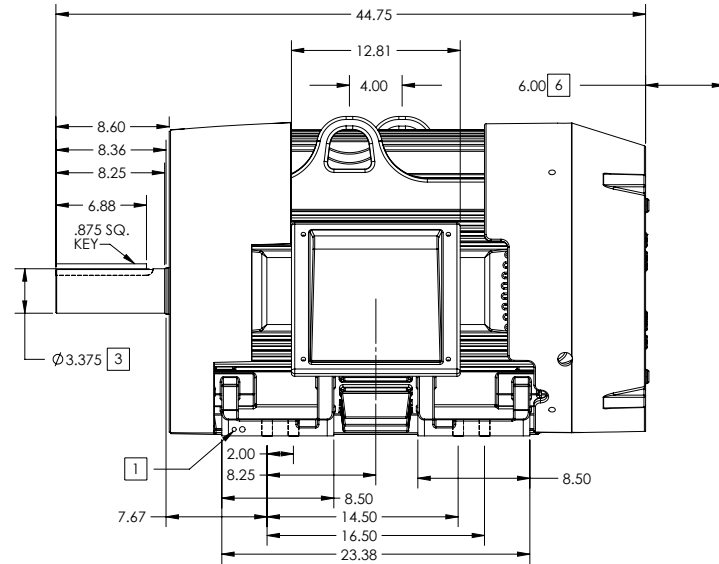
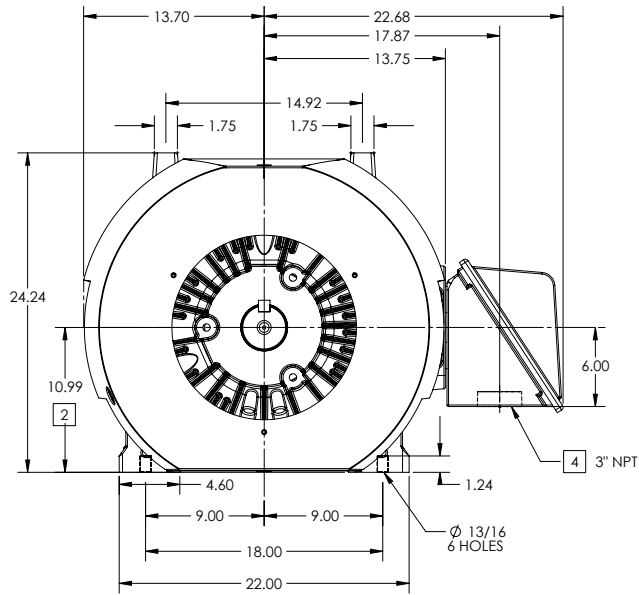
ENCLOSURE: TOTALLY ENCLOSED

FRAME G445T ABOVE NEMA RATINGS

COOLING: FAN COOLED

MOUNTING: FOOT

INCLUDES 444T FRAME MOUNTING HOLES



- 1. GROUND HOLES QTY 1 1/2-13 TAP; QTY 1 3/8-16 TAP
- 2. VARIES +.00,-.06
- 3. VARIES +.00,-.001
- 4. ON STANDARD MOTORS THIS IS CONDUIT SIZE. ON XT AND CORROSION PROOF MOTOR THIS IS PIPE TAP.
- 5. MOTOR WEIGHTS MAY VARY BY 15% DEPENDING ON RATING.
- 6. OBSTRUCTION MUST NO ENCROACH ON AIR INLET

[5] WEIGHT (LBS): 2150

DRIVE END AIR DEFLECTOR IS ONLY INCLUDED WHEN NECESSARY.

DIMENSIONS ARE IN INCHES; SEE SHEET 2 FOR DIMENSIONS IN MILLIMETERS

CUSTOMER IS RESPONSIBLE FOR DETERMINING THAT MOTOR PERFORMANCE IS SUITABLE IN THE APPLICATION.

CONDUIT BOX LOCATED ON OPPOSITE SIDE WHEN F-1.
IF MOUNTING CLEARANCE DETAILS ARE REQUIRED, CONSULT FACTORY.
MAXIMUM PERMISSIBLE SHAFT RUNOUT WHEN MEASURED AT END OF
STANDARD SHAFT EXTENSION IS .003" T.I.R. TO 5 INCH DIA.

SHEET NUMBER
1 OF 2

000-LCP-119

REV. DESC INITIAL RELEASE	VERSION: 00	REVISED: 11.00.02 09/12/2012	TDR: 00000760644
MODEL NO. 617427-007	BY: RAGTBM	Material:	REF:

BALDOR

G445T444T STD - FOOTED - SIDE/CENTER C/B - F2 MOUNT

617427-007

DUTY MASTER ALTERNATING CURRENT MOTORS

SQUIRREL-CAGE INDUCTION

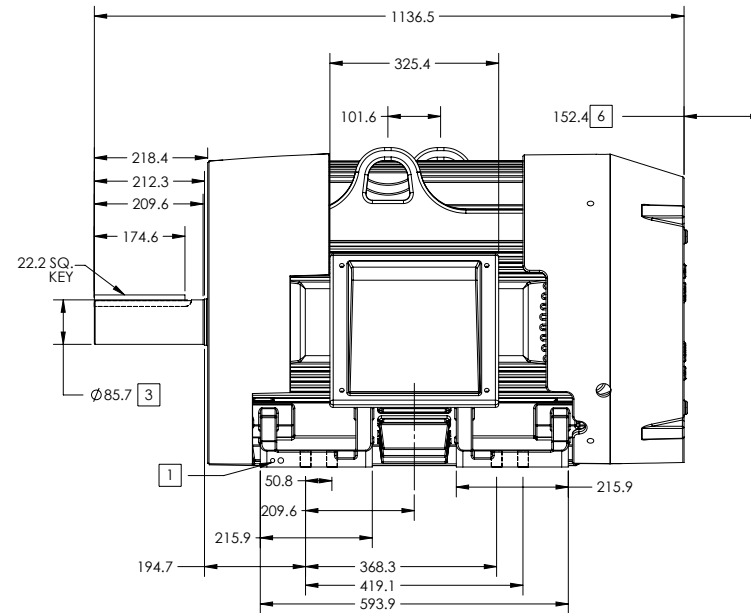
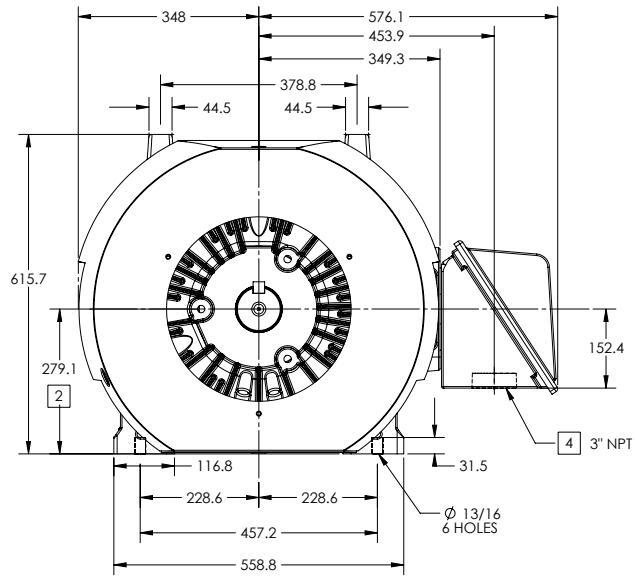
ENCLOSURE: TOTALLY ENCLOSED

FRAME G445T ABOVE NEMA RATINGS

COOLING: FAN COOLED

MOUNTING: FOOT

INCLUDES 444T FRAME MOUNTING HOLES



- 1. GROUND HOLES QTY 1 1/2-13 TAP; QTY 1 3/8-16 TAP
- 2. VARIES +.00,-.06
- 3. VARIES +.00,-.001
- 4. ON STANDARD MOTORS THIS IS CONDUIT SIZE. ON XT AND CORROSION PROOF MOTOR THIS IS PIPE TAP.
- 5. MOTOR WEIGHTS MAY VARY BY 15% DEPENDING ON RATING.
- 6. OBSTRUCTION MUST NO ENCROACH ON AIR INLET

[5] WEIGHT (KGS): 975

DRIVE END AIR DEFLECTOR IS ONLY INCLUDED WHEN NECESSARY.

DIMENSIONS ARE IN MILLIMETERS; SEE SHEET 2 FOR DIMENSIONS IN INCHES

CUSTOMER IS RESPONSIBLE FOR DETERMINING THAT MOTOR PERFORMANCE IS SUITABLE IN THE APPLICATION.

CONDUIT BOX LOCATED ON OPPOSITE SIDE WHEN F-1.
IF MOUNTING CLEARANCE DETAILS ARE REQUIRED, CONSULT FACTORY.
MAXIMUM PERMISSIBLE SHAFT RUNOUT WHEN MEASURED AT END OF
STANDARD SHAFT EXTENSION IS .003" T.I.R. TO 5 INCH DIA.

SHEET NUMBER
2 OF 2

000-LCP-119

REV. DESC INITIAL RELEASE			
REV: -	VERSION: 00	REVISED: 11.00.02 09/12/2012	TDR: 00000760644
MODEL NO. 617427-007		REF:	
BY: RAGTBM	Material:	C	

BALDOR

G445T444T STD - FOOTED - SIDE/CENTER C/B - F2 MOUNT

617427-007

416820-036

**A-C MOTOR
CONNECTION DIAGRAM
STANDARD 3 LEAD CONNECTED**



(N.P. 1575-BA)

416820-036

REV. DESC: LOADED TO BUS, C/R 335225		
REV. LTR: -	VERSION: 00	TDR: 000000538207
FILE: \MGA\00000\682	REVISED: 11:54:06 04/30/2010	
MTL: -	BY: RAGRA	

BALDOR

CONN DIAG - STANDARD 3 LEAD
SH 1 of 1