

DUTY MASTER ALTERNATING CURRENT MOTORS

SQUIRREL-CAGE INDUCTION

CAST IRON CONSTRUCTION

FRAMES E364T/E365T

COOLING: FAN COOLED

ENCLOSURE: TOTALLY ENCLOSED

MOUNTING: FOOT/F2

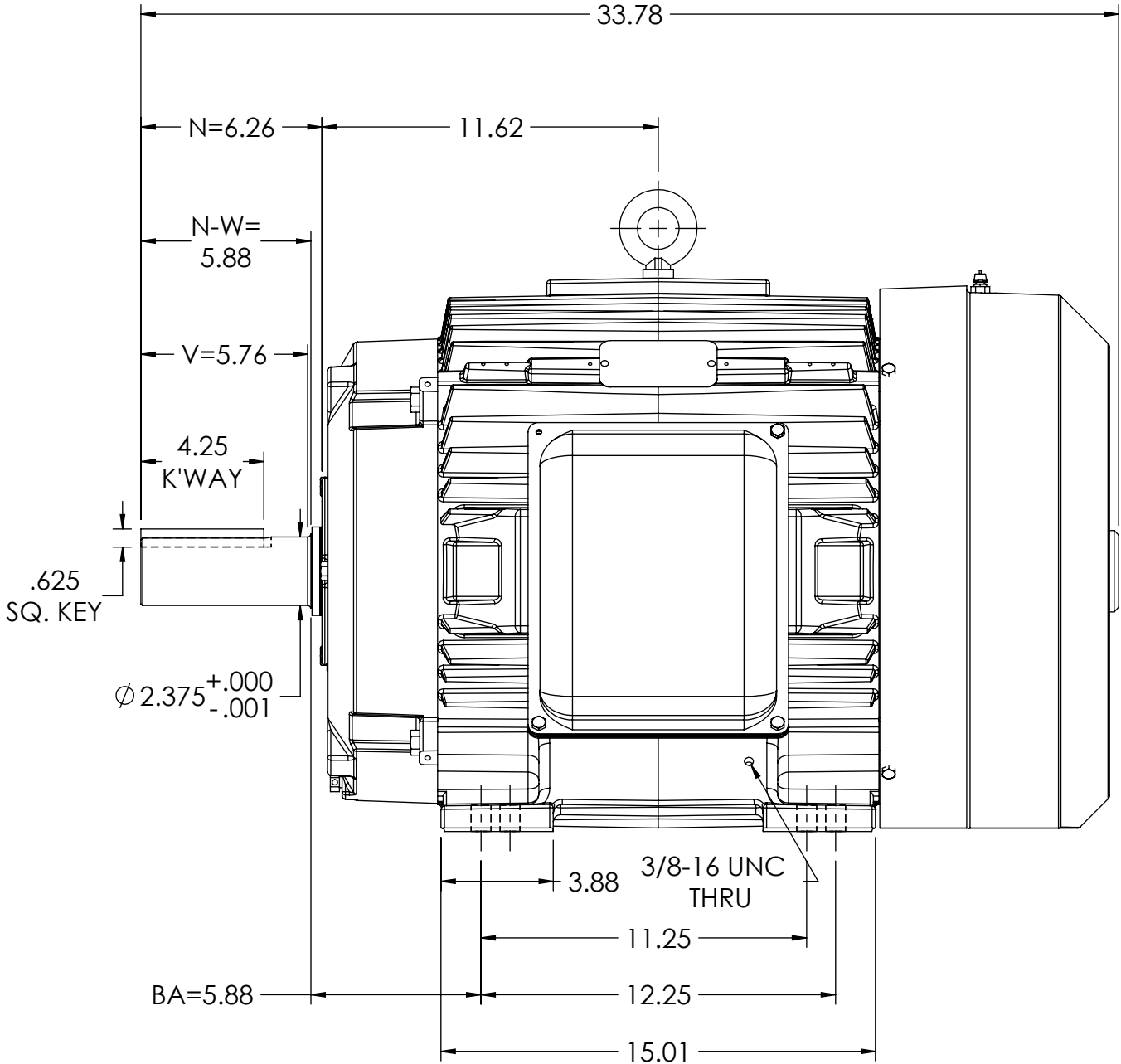
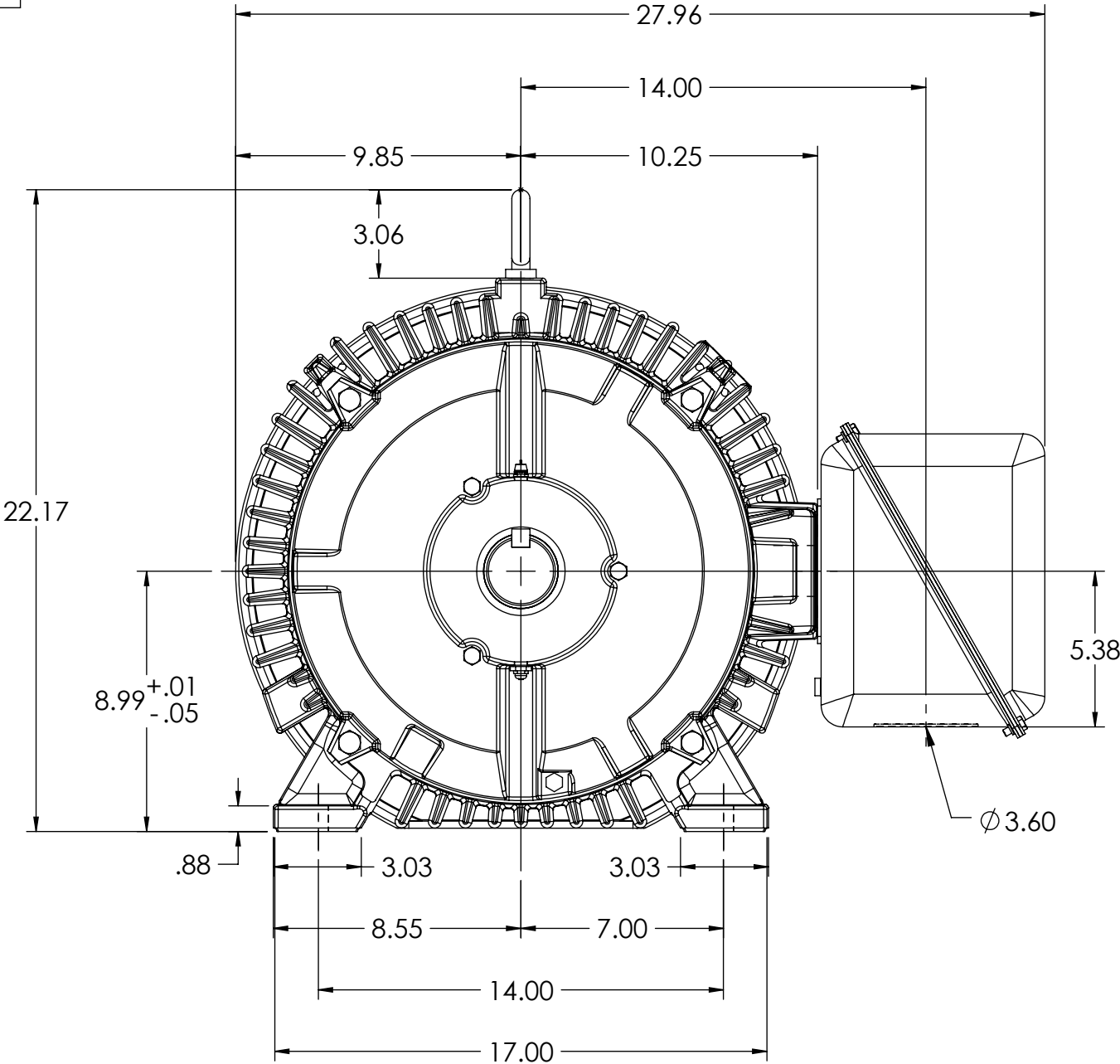
617428-078

D

C

B

A



D

C

B

A

WEIGHT (LBS): 840, MOTOR WEIGHTS MAY VARY BY 15% DEPENDING UPON RATING.  
MAXIMUM PERMISSIBLE SHAFT RUNOUT WHEN MEASURED AT END OF STD. SHAFT EXTENSION IS .003 T.I.R.  
CUSTOMER IS RESPONSIBLE FOR DETERMINING THAT BALDOR'S PRODUCT WILL PERFORM SUITABLY IN THE INTENDED APPLICATION.

REV. DESC: UPDATE TO MATCH CATALOG SPEC PER PROD MGM			
REV: B	VERSION: 02	REVISED: 01:16:29 08/11/2025	TDR: 000001194451
MODEL NO. 617428-078			REF:
BY: USBUFRA			<b>B</b>

**BALDOR**

E365/364T TEFC FOOT F2 STEEL CONDUIT BOX

617428-078