

ABB BALDOR RELIANCE III

Customer information packet

EFM3212T-G

5HP, 3465RPM, 3PH, 60HZ, 182T, 3622M, OPSB, F2

Class - None

Division - Not Applicable

Specifications

Enclosure	OPSB
Frame	182T
Frame Material	Steel
Frequency	60.00 Hz
Haz Area Class and Group	None
Haz Area Division	Not Applicable
Motor Letter Type	Three Phase
Output @ Frequency	5.000 HP @ 60 HZ
Phase	3
Synchronous Speed @ Frequency	3600 RPM @ 60 HZ
Voltage @ Frequency	230.0 V @ 60 HZ 460.0 V @ 60 HZ
Agency Approvals	NEMA PREMIUM UR CSA EEV
Ambient Temperature	40 °C
Auxiliary Box	NO AUXILLARY BOX
Auxiliary Box Lead Termination	None
Base Indicator	Rigid
Bearing Grease Type	Polyrex EM (-20F +300F)
Blower	None
Current @ Voltage	11.800 A @ 230.0 V 12.400 A @ 208.0 V 5.900 A @ 460.0 V
Design Code	A
Drip Cover	No Drip Cover
Duty Rating	CONT
Efficiency @ 100% Load	86.5 %
Electrically Isolated Bearing	Not Electrically Isolated
Feedback Device	NO FEEDBACK
Front Shaft Indicator	None
Heater Indicator	No Heater

Part Detail

Revision	E
Type	AC
Mech. spec.	36Q125
Base	
Status	PRD/A
Elec. spec.	36WGQ033
Layout	36LYQ125
Eff. date	04-02-2026
CD Diagram	CD0005
Poles	02
Leads	9#16
Proprietary	False
Created date	03-30-2023

High Voltage Full Load Amps	5.9 a
Insulation Class	H
Inverter Code	Inverter Ready
KVA Code	J
Lifting Lugs	No Lifting Lugs
Locked Bearing Indicator	Locked Bearing
Motor Lead Quantity/Wire Size	9 @ 16 AWG
Motor Lead Termination	Flying Leads
Motor Standards	NEMA
Motor Type	3622M
Mounting Arrangement	F2
Number of Poles	2
Overall Length	13.62 IN
Power Factor	91
Product Family	General Purpose
Pulley End Bearing Type	Ball
Pulley Face Code	Standard
Pulley Shaft Indicator	Standard
Rodent Screen	None
Service Factor	1.15
Shaft Diameter	1.125 IN
Shaft Ground Indicator	Shaft Grounding
Shaft Rotation	Reversible
Shaft Slinger Indicator	No Slinger
Speed	3465 rpm
Speed Code	Single Speed
Starting Method	Direct on line
Thermal Device - Bearing	None
Thermal Device - Winding	None
Vibration Sensor Indicator	No Vibration Sensor
Winding Thermal 1	None
Winding Thermal 2	None

Nameplate

NP3553L									
CAT.NO.	EFM3212T-G								
SPEC	36Q125Q033G1								
HP	5								
VOLTS	230/460								
AMPS	11.8/5.9								
RPM	3465								
FRAME	182T	HZ	60	PH	3				
SF	1.15	CODE	J	DES	A	CLASS	H		
NEMA NOM. EFF	86.5	PF	91						
RATING	40C AMB-CONT								
CC	010A								
ENCL	OPSB	SER							
DE	6206	ODE	6205						
VPWM INVERTER READY									
CT30-60(2:1) VT3-60(20:1)									

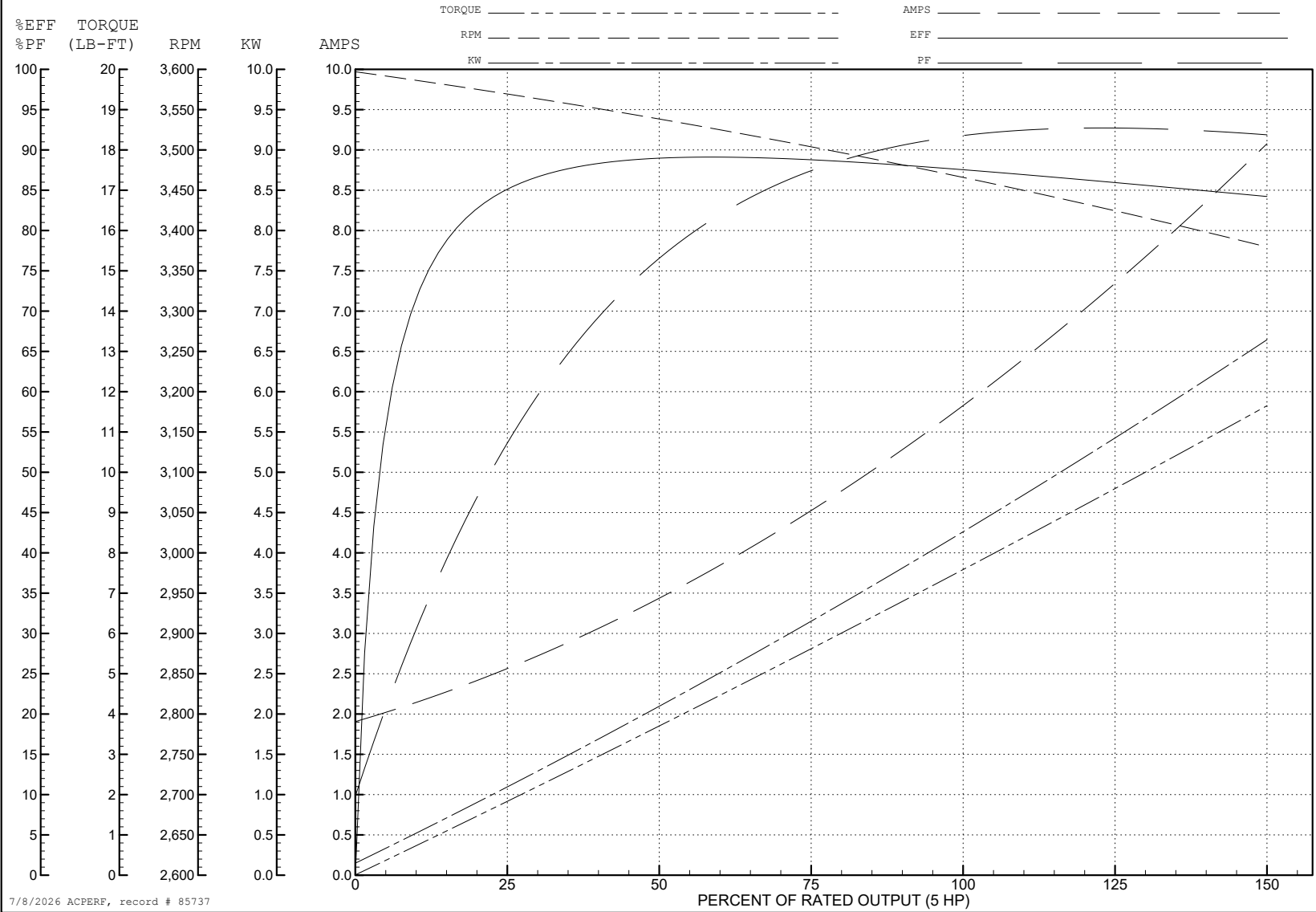
ABB Motors and Mechanical Inc.

WINDING # 36WGQ033

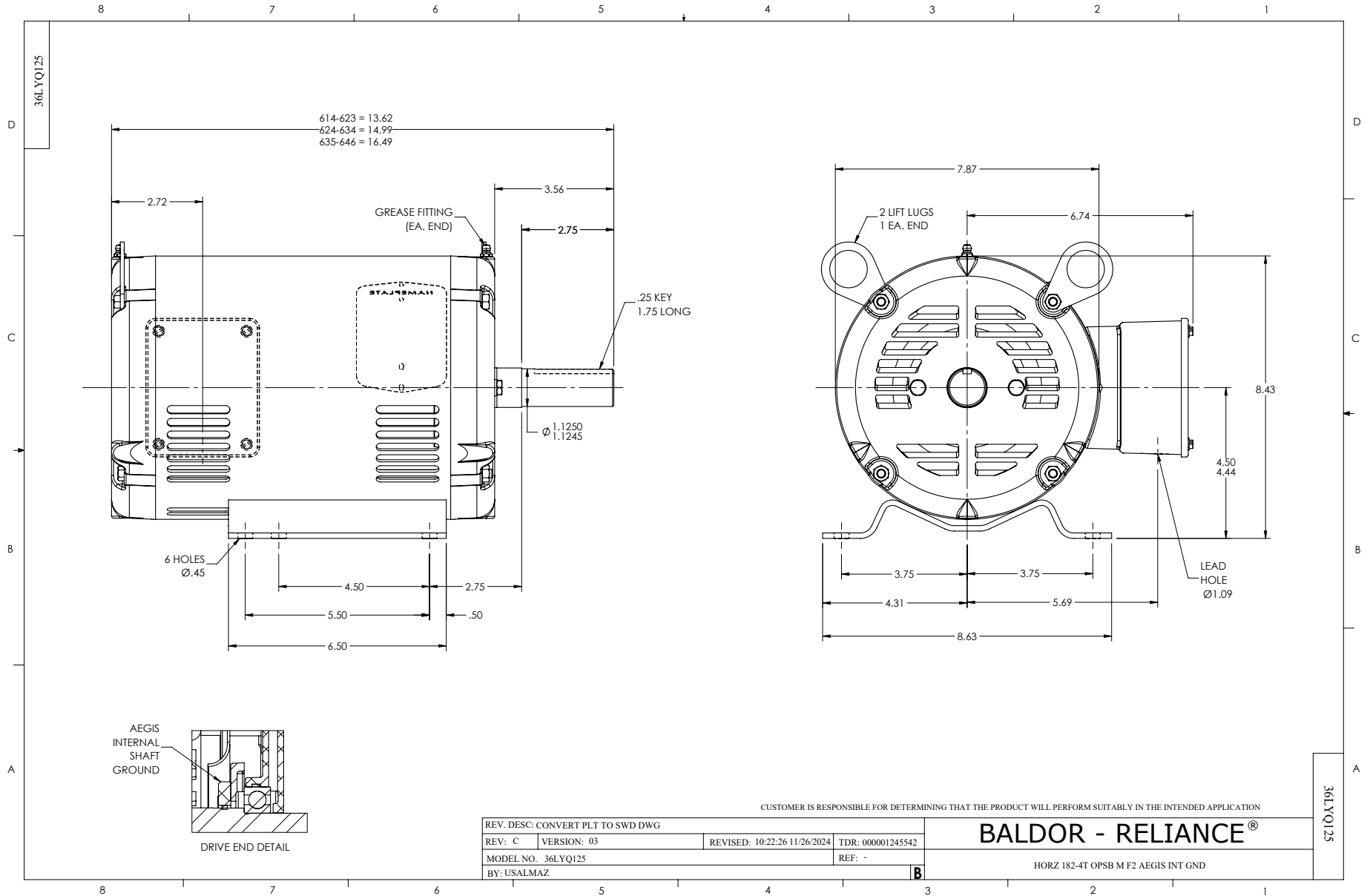
5 HP 3 PH 60 HZ 3465 RPM 460 V 3622M

Typical performance - not guaranteed values.

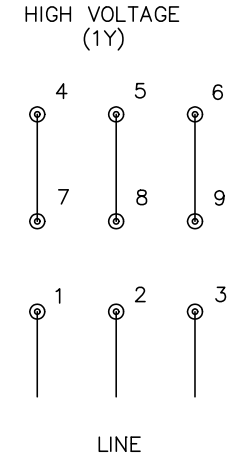
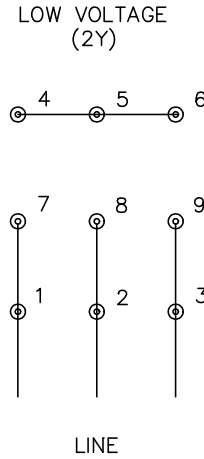
TORQUES (LB-FT): PO=28.9 PU=20.2 LR=22.2 LRA=46.1



7/8/2026 ACPERF, record # 85737



CD0005



NOTES:

1. INTERCHANGE ANY TWO LINE LEADS TO REVERSE ROTATION.
2. OPTIONAL THERMOSTATS ARE PROVIDED WHEN SPECIFIED.
3. ACTUAL NUMBER OF INTERNAL PARALLEL CIRCUITS MAY BE A MULTIPLE OF THOSE SHOWN ABOVE.
4. LEAD COLORS ARE OPTIONAL. LEADS MUST ALWAYS BE NUMBERED AS SHOWN.

CD0005

REV. DESC: REVISE TO SHOW OPTIONAL COLORS			
REV. LTR: E	BY: JLP	REVISED: 01/19/99 10:15	TDR: 0171435
S00000		FILE: AAA00005140	MDL: -
		MTL: -	

BALDOR ELECTRIC Co.

3PH, DV, 9 LEADS