



Customer information packet

EFM3211T

3HP, 1765RPM, 3PH, 60HZ, 182T, 3630M, OPSB, F2

Class - None

Division - Not Applicable

Specifications

| | |
|--------------------------------|---|
| Enclosure | OPSB |
| Frame | 182T |
| Frame Material | Steel |
| Frequency | 60.00 Hz |
| Motor Letter Type | Three Phase |
| Output @ Frequency | 3.000 HP @ 60 HZ |
| Phase | 3 |
| Synchronous Speed @ Frequency | 1800 RPM @ 60 HZ |
| Voltage @ Frequency | 230.0 V @ 60 HZ 460.0 V @ 60 HZ |
| XP Class and Group | None |
| XP Division | Not Applicable |
| Agency Approvals | CSA EEV CURUSEEV NEMA PREMIUM NEMA_PREMIUM UR |
| Ambient Temperature | 40 °C |
| Auxillary Box | No Auxillary Box |
| Auxillary Box Lead Termination | None |
| Base Indicator | Rigid |
| Bearing Grease Type | Polyrex EM (-20F +300F) |
| Blower | None |
| Current @ Voltage | 8.400 A @ 230.0 V 8.500 A @ 208.0 V 4.200 A @ 460.0 V |
| Design Code | B |
| Drip Cover | No Drip Cover |
| Duty Rating | CONT |
| Efficiency @ 100% Load | 89.5 % |
| Electrically Isolated Bearing | Not Electrically Isolated |
| Feedback Device | NO FEEDBACK |

Part detail

| | |
|--------------|------------|
| Revision | N |
| Type | AC |
| Mech. spec. | 36B106 |
| Base | |
| Status | PRD/A |
| Elec. spec. | 36WGS658 |
| Layout | 36LYB106 |
| Eff. date | 06-24-2020 |
| CD Diagram | CD0005 |
| Poles | 04 |
| Leads | 9#16 |
| Proprietary | False |
| Created date | 06-01-2011 |

| | |
|-------------------------------|--------------------|
| Front Face Code | Standard |
| Front Shaft Indicator | None |
| Heater Indicator | No Heater |
| High Voltage Full Load Amps | 4.2 a |
| Insulation Class | F |
| Inverter Code | Inverter Ready |
| KVA Code | K |
| Lifting Lugs | No Lifting Lugs |
| Locked Bearing Indicator | No Locked Bearing |
| Motor Lead Exit | Ko Box |
| Motor Lead Quantity/Wire Size | 9 @ 16 AWG |
| Motor Lead Termination | Flying Leads |
| Motor Standards | NEMA |
| Motor Type | 3630M |
| Mounting Arrangement | F2 |
| Number of Poles | 4 |
| Overall Length | 15.00 IN |
| Power Factor | 74 |
| Product Family | General Purpose |
| Pulley End Bearing Type | Ball |
| Pulley Face Code | Standard |
| Pulley Shaft Indicator | Standard |
| Rodent Screen | None |
| Service Factor | 1.15 |
| Shaft Diameter | 1.125 IN |
| Shaft Extension Location | Pulley End |
| Shaft Ground Indicator | No Shaft Grounding |
| Shaft Rotation | Reversible |
| Shaft Slinger Indicator | No Slinger |
| Speed | 1765 rpm |
| Speed Code | Single Speed |
| Starting Method | Direct on line |
| Thermal Device - Bearing | None |
| Thermal Device - Winding | None |

Vibration Sensor Indicator**No Vibration Sensor****Winding Thermal 1****None****Winding Thermal 2****None**

Nameplate

| NP3553L | | | | | | | | | |
|----------------------------------|--------------|-------------|-----------------------|------------|---|--------------|-----|--|--|
| CAT.NO. | EFM3211T | | | | | | | | |
| SPEC | 36B106S658G1 | | | | | | | | |
| HP | 3 | | | | | | | | |
| VOLTS | 230/460 | | | | | | | | |
| AMPS | 8.4/4.2 | | | | | | | | |
| RPM | 1765 | | | | | | | | |
| FRAME | 182T | | HZ | 60 | | PH | 3 | | |
| SF | 1.15 | CODE | K | DES | B | CLASS | F | | |
| NEMA NOM. EFF | 89.5 | PF | 74 | | | | | | |
| RATING | 40C AMB-CONT | | | | | | | | |
| CC | 010A | | USABLE AT 208V | | | | N/A | | |
| ENCL | OPSB | SER | | | | | | | |
| DE | 6206 | | ODE | 6205 | | | | | |
| VPWM INVERTER READY | | | | | | | | | |
| CT30-60(2:1) VT3-60(20:1) | | | | | | | | | |

Accessories

| Part number | Description | Multiplier |
|--------------------|--------------------|-------------------|
| 36-3403 | C FACE KIT | A8 |
| 36EP1405A09SP | D-FLANGE KIT | A8 |

AC Induction Motor Performance Data

Record # 33604

Typical performance - not guaranteed values

| Winding: 36WGS658-R001 | | Type: 3630M | Enclosure: OPSB | |
|------------------------|-------------------|--------------|--|--------------------------|
| Nameplate Data | | | 460 V, 60 Hz: High Voltage Connection | |
| Rated Output (HP) | | 3 | Full Load Torque | 8.87 LB-FT |
| Volts | | 230/460 | Start Configuration | direct on line |
| Full Load Amps | | 8.4/4.2 | Breakdown Torque | 37.4 LB-FT |
| R.P.M. | | 1765 | Pull-up Torque | 17.3 LB-FT |
| Hz | 60 Phase | 3 | Locked-rotor Torque | 21.2 LB-FT |
| NEMA Design Code | B KVA Code | K | Starting Current | 32.3 A |
| Service Factor (S.F.) | | 1.15 | No-load Current | 2.43 A |
| NEMA Nom. Eff. | 89.5 Power Factor | 74 | Line-line Res. @ 25°C | 3.8716 Ω |
| Rating - Duty | | 40C AMB-CONT | Temp. Rise @ Rated Load | 24°C |
| S.F. Amps | | | Temp. Rise @ S.F. Load | 28°C |
| | | | Locked-rotor Power Factor | 43 |
| | | | Rotor inertia | 0.279 LB-FT ² |

Load Characteristics 460 V, 60 Hz, 3 HP

| % of Rated Load | 25 | 50 | 75 | 100 | 125 | 150 | S.F. |
|-----------------|--------|------|--------|--------|--------|--------|------|
| Power Factor | 33 | 53 | 66 | 73 | 79 | 81 | 77 |
| Efficiency | 80.2 | 87.5 | 89.5 | 89.7 | 89.5 | 88.7 | 89.6 |
| Speed | 1791.1 | 1783 | 1774.5 | 1765.5 | 1755.7 | 1744.8 | 1760 |
| Line amperes | 2.6 | 2.99 | 3.54 | 4.25 | 4.97 | 5.83 | 4.68 |

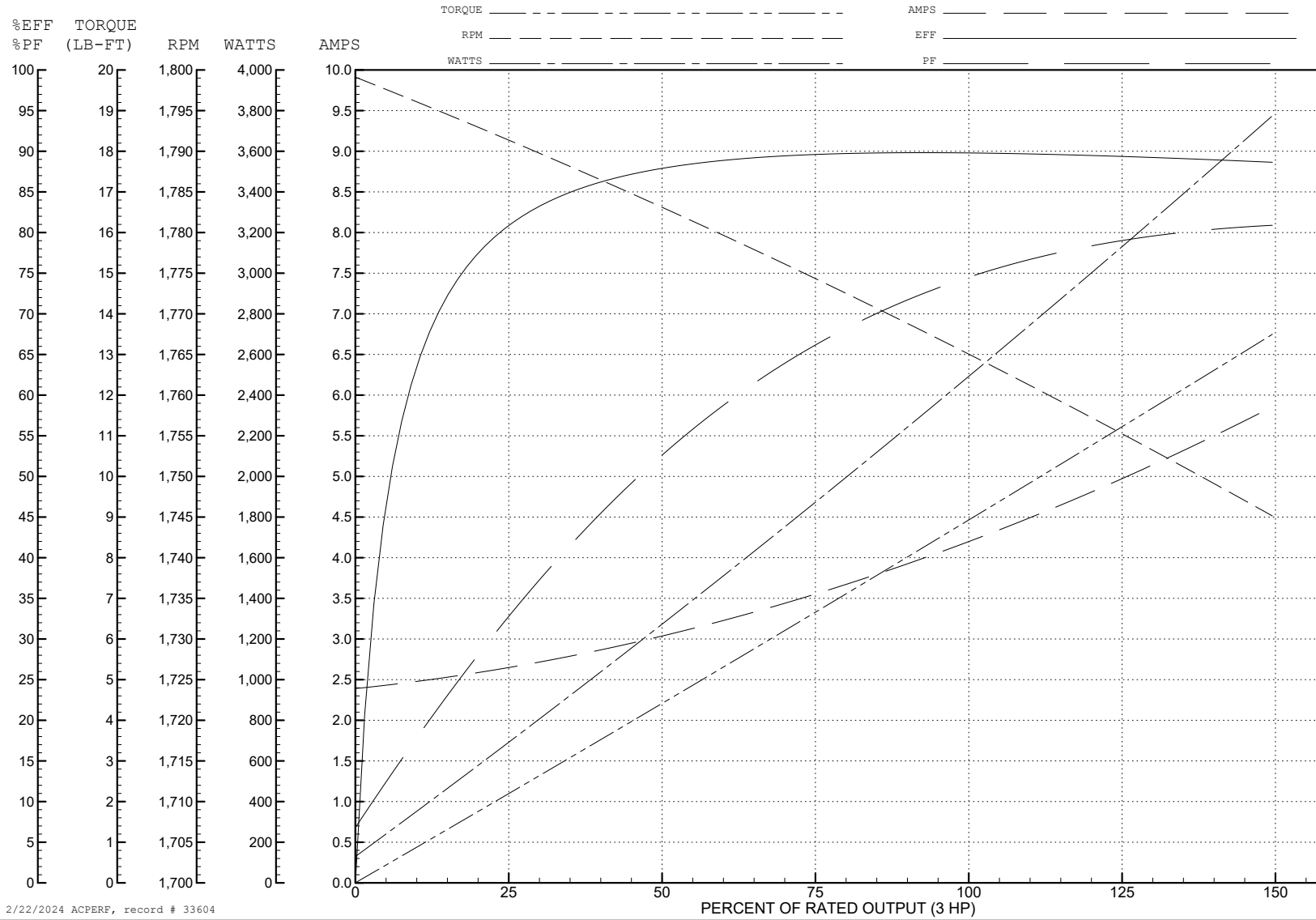
ABB Motors and Mechanical Inc.

WINDING # 36WGS658

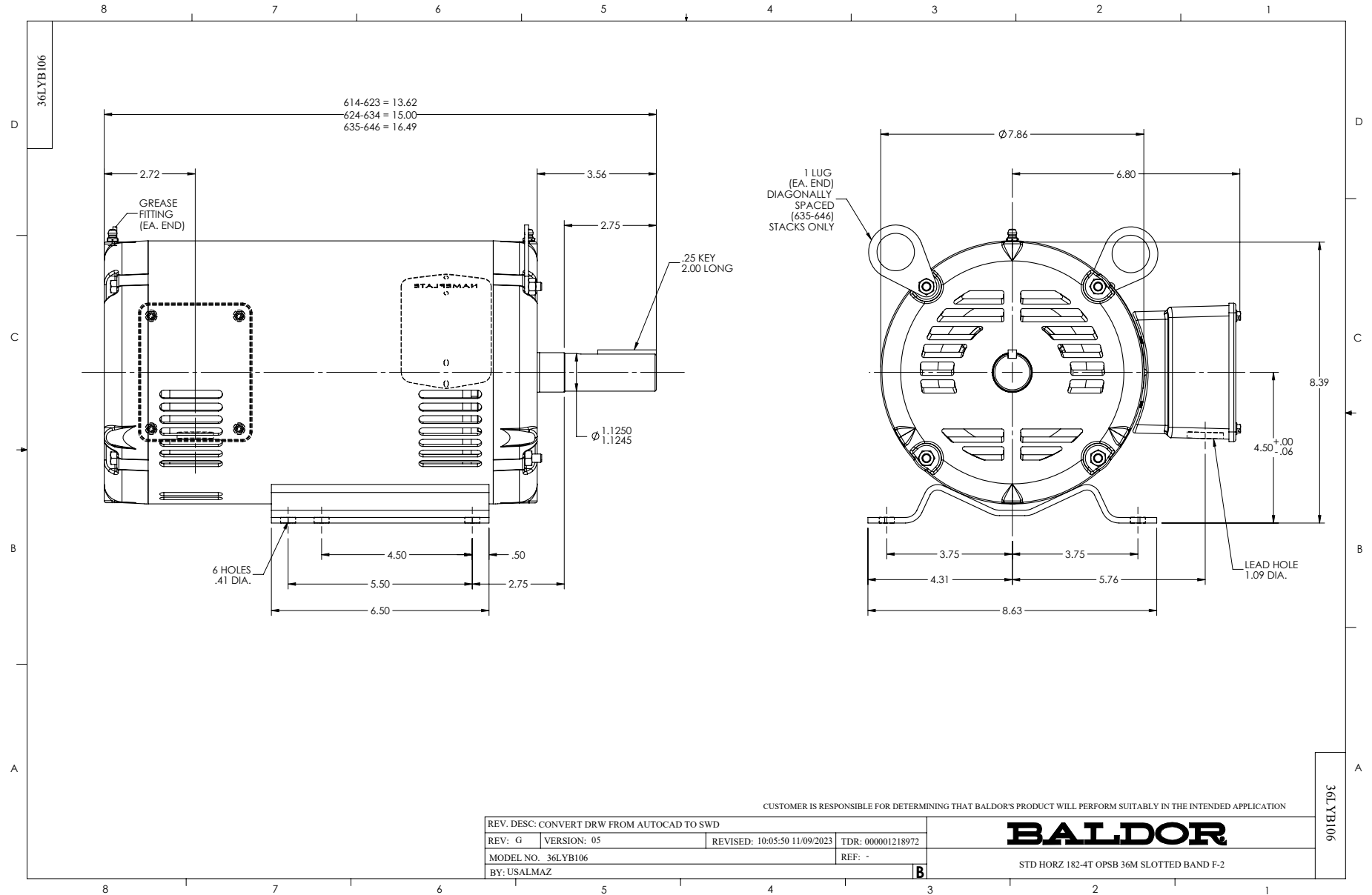
3 HP 3 PH 60 HZ 1765 RPM 460 V 3630M

Typical performance - not guaranteed values.

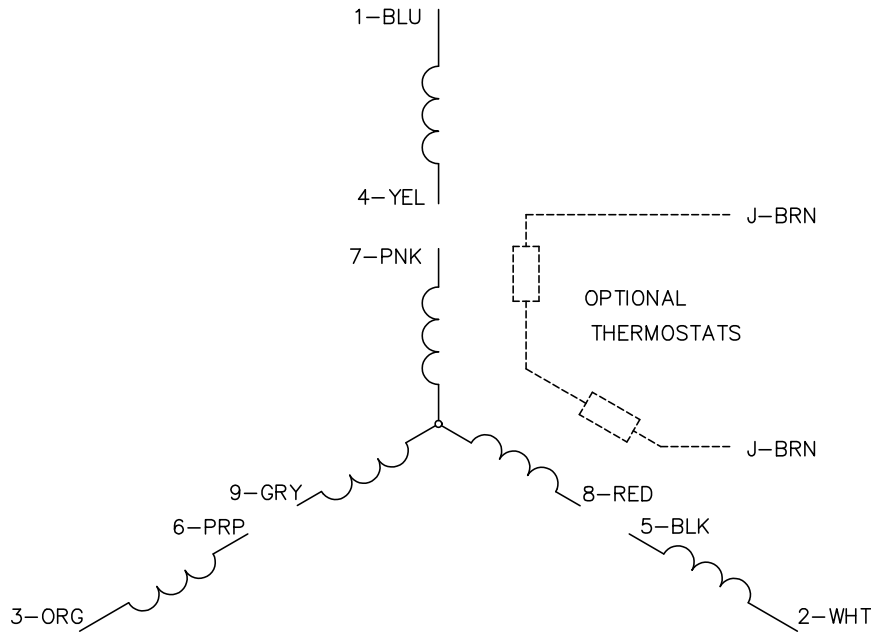
TORQUES (LB-FT): PO=37.4 PU=17.3 LR=21.2 LRA=32.3



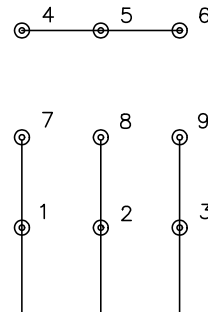
2/22/2024 ACPERF, record # 33604



CD0005

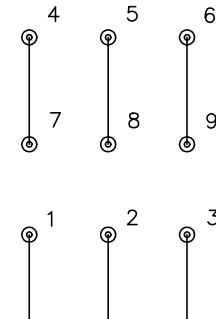


LOW VOLTAGE
(2Y)



LINE

HIGH VOLTAGE
(1Y)



LINE

NOTES:

1. INTERCHANGE ANY TWO LINE LEADS TO REVERSE ROTATION.
2. OPTIONAL THERMOSTATS ARE PROVIDED WHEN SPECIFIED.
3. ACTUAL NUMBER OF INTERNAL PARALLEL CIRCUITS MAY BE A MULTIPLE OF THOSE SHOWN ABOVE.
4. LEAD COLORS ARE OPTIONAL. LEADS MUST ALWAYS BE NUMBERED AS SHOWN.

CD0005

| | | | |
|---|---------|-------------------------|--------------|
| REV. DESC: REVISE TO SHOW OPTIONAL COLORS | | | |
| REV. LTR: E | BY: JLP | REVISED: 01/19/99 10:15 | TDR: 0171435 |
| S00000 | | FILE: AAA00005140 | MDL: - |
| | | MTL: - | |

BALDOR ELECTRIC Co.

3PH, DV, 9 LEADS