

ABB BALDOR RELIANCE III



Customer information packet

EFM2531T-G

25HP, 1775RPM, 3PH, 60HZ, 284T, 4050M, OPSB, F2

Specifications

Enclosure	OPSB
Frame	284T
Frame Material	Steel
Frequency	60.00 Hz
Motor Letter Type	Three Phase
Output @ Frequency	25.000 HP @ 60 HZ
Phase	3
Synchronous Speed @ Frequency	1800 RPM @ 60 HZ
Voltage @ Frequency	460.0 V @ 60 HZ 230.0 V @ 60 HZ
Agency Approvals	CSA EEV NEMA PREMIUM UR
Ambient Temperature	40 °C
Auxiliary Box	NO AUXILLARY BOX
Auxiliary Box Lead Termination	None
Base Indicator	Rigid
Bearing Grease Type	Polyrex EM (-20F +300F)
Blower	None
Current @ Voltage	64.000 A @ 208.0 V 60.000 A @ 230.0 V 30.000 A @ 460.0 V
Design Code	A
Drip Cover	No Drip Cover
Duty Rating	CONT
Efficiency @ 100% Load	93.6 %
Electrically Isolated Bearing	Not Electrically Isolated
Feedback Device	NO FEEDBACK
Front Shaft Indicator	None
Heater Indicator	No Heater
High Voltage Full Load Amps	30.0 a
Insulation Class	H

Part Detail

Revision	C
Type	AC
Mech. spec.	40E304
Base	
Status	PRD/A
Elec. spec.	40WGX806
Layout	40LYE304
Eff. date	06-27-2024
CD Diagram	CD0005
Poles	04
Leads	9#10
Proprietary	False
Created date	03-30-2023

Inverter Code	Inverter Ready
KVA Code	G
Lifting Lugs	Standard Lifting Lugs
Locked Bearing Indicator	No Locked Bearing
Motor Lead Quantity/Wire Size	9 @ 10 AWG
Motor Lead Termination	Flying Leads
Motor Standards	NEMA
Motor Type	4050M
Mounting Arrangement	F2
Number of Poles	4
Overall Length	26.06 IN
Power Factor	82
Product Family	General Purpose
Pulley End Bearing Type	Ball
Pulley Face Code	Standard
Pulley Shaft Indicator	Standard
Rodent Screen	None
Service Factor	1.15
Shaft Diameter	1.875 IN
Shaft Ground Indicator	Shaft Grounding
Shaft Rotation	Reversible
Shaft Slinger Indicator	No Slinger
Speed	1775 rpm
Speed Code	Single Speed
Starting Method	Direct on line
Thermal Device - Bearing	None
Thermal Device - Winding	None
Vibration Sensor Indicator	No Vibration Sensor
Winding Thermal 1	None
Winding Thermal 2	None

Nameplate

NP3554LUA									
CAT.NO.	EFM2531T-G			P/N				ENCL	OPSB
SPEC.	40E304X806G1	CC	010A	FRAME	284T		SER.NO.		
HP	25		CLASS	H	HZ	60			
RPM	1775		PH	3	DES	A			
VOLTS	230/460		CODE	G	ODE BRG	6309	DE BRG	6311	
AMPS	60/30								
RATING	40C AMB-CONT		NEMA-NOM-EFF	93.6	GREASE	POLYREX EM			
PF	82	SER.F.	1.15	CT30-60(2:1) VT3-60(20:1)					
USABLE AT	50HZ 25HP 190/380V 72/36A			SF1.0					
HTR-VOLTS	HTR-AMPS	MAX. SPACE HEATER TEMP.							

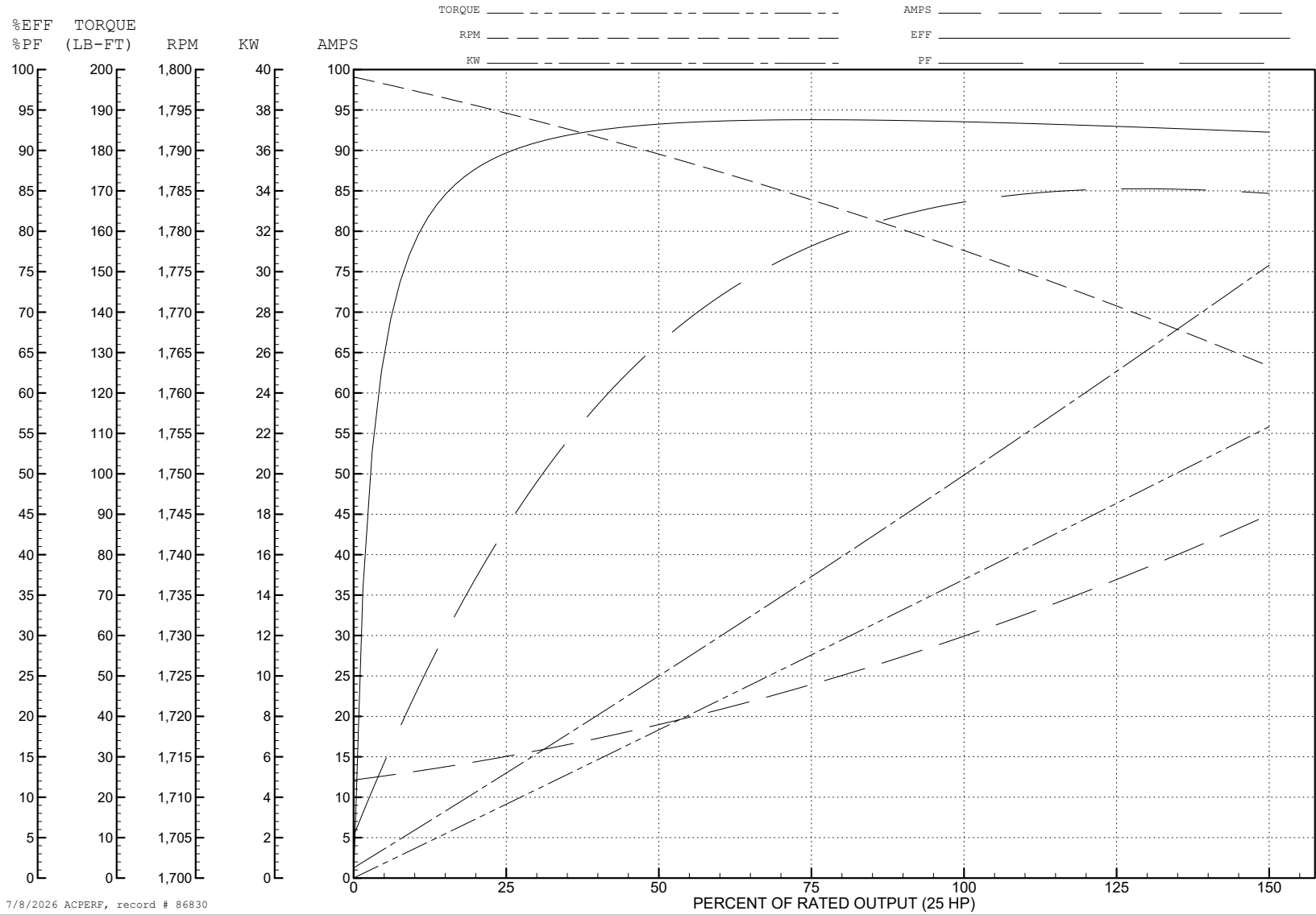
ABB Motors and Mechanical Inc.

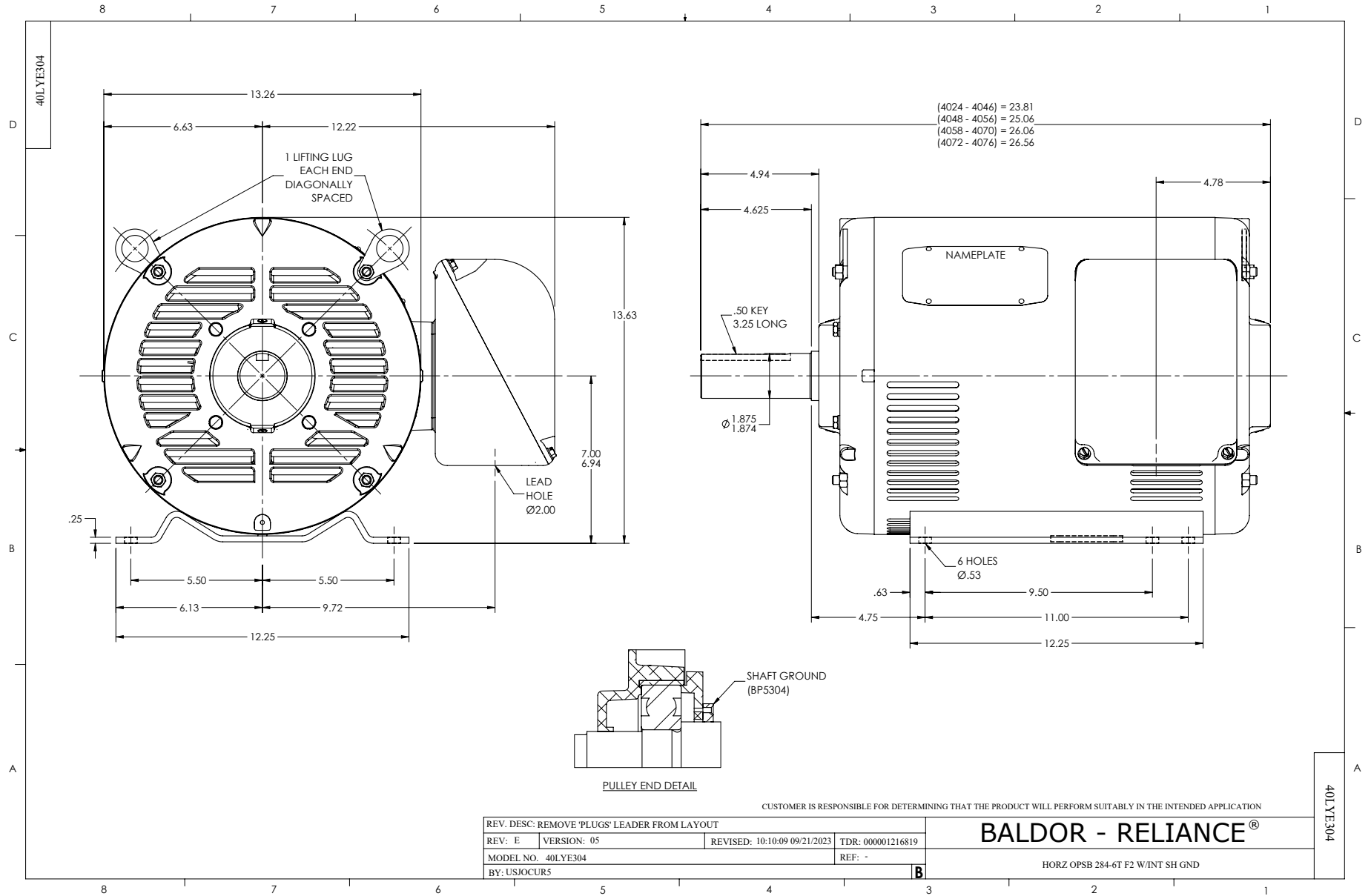
WINDING # 40WGx806

Typical performance - not guaranteed values.

25 HP 3 PH 60 HZ 1775 RPM 460 V 4050M

TORQUES (LB-FT): PO=232 PU=116 LR=133 LRA=192





CD0005



LOW VOLTAGE
(2Y)



LINE

HIGH VOLTAGE
(1Y)



LINE

NOTES:

1. INTERCHANGE ANY TWO LINE LEADS TO REVERSE ROTATION.
2. OPTIONAL THERMOSTATS ARE PROVIDED WHEN SPECIFIED.
3. ACTUAL NUMBER OF INTERNAL PARALLEL CIRCUITS MAY BE A MULTIPLE OF THOSE SHOWN ABOVE.
4. LEAD COLORS ARE OPTIONAL. LEADS MUST ALWAYS BE NUMBERED AS SHOWN.

CD0005

REV. DESC: REVISE TO SHOW OPTIONAL COLORS			
REV. LTR: E	BY: JLP	REVISED: 01/19/99 10:15	TDR: 0171435
S00000		FILE: AAA00005140	MDL: -
		MTL: -	

BALDOR ELECTRIC Co.

3PH, DV, 9 LEADS