

BALDOR • RELIANCE

Customer information packet

ECTM4314T-5G

60HP, 1780RPM, 3PH, 60HZ, 364T, A3658M, TEFC, F

Class - None

Division - Not Applicable

Specifications

Enclosure	TEFC
Frame	364T
Frame Material	Iron
Frequency	60.00 Hz
Haz Area Class and Group	None
Haz Area Division	Not Applicable
Motor Letter Type	Three Phase
Output @ Frequency	60.000 HP @ 60 HZ
Phase	3
Synchronous Speed @ Frequency	1800 RPM @ 60 HZ
Voltage @ Frequency	575.0 V @ 60 HZ
Agency Approvals	CCSAUSEEV
Ambient Temperature	40 °C
Auxillary Box	No Auxillary Box
Base Indicator	Rigid
Bearing Grease Type	Polyrex EM (-20F +300F)
Current @ Voltage	55.000 A @ 575.0 V
Design Code	B
Drip Cover	No Drip Cover
Duty Rating	CONT
Efficiency @ 100% Load	95.0 %
Feedback Device	NO FEEDBACK
Heater Indicator	Heater Included, 115 V
High Voltage Full Load Amps	55.0 a
Insulation Class	F
Inverter Code	Inverter Ready
KVA Code	G
Lifting Lugs	Standard Lifting Lugs
Motor Lead Quantity/Wire Size	3 @ 4 AWG
Motor Standards	NEMA
Motor Type	A3658M
Mounting Arrangement	F1

Part detail

Revision	B
Type	AC
Mech. spec.	
Base	
Status	PRD/A
Elec. spec.	A36WG4086
Layout	617438-196
Eff. date	06-06-2023
CD Diagram	416820-036
Poles	04
Leads	3#4
Proprietary	False
Created date	04-12-2022

Number of Poles	4
Overall Length	33.78 IN
Power Factor	84
Product Family	Cooling Tower
Pulley End Bearing Type	Ball
Pulley Face Code	Standard
Service Factor	1.15
Shaft Diameter	2.374 IN
Shaft Ground Indicator	Shaft Grounding
Shaft Rotation	Reversible
Shaft Slinger Indicator	Shaft Slinger
Speed	1780 rpm
Speed Code	Single Speed
Starting Method	Direct on line
Thermal Device - Bearing	None
Thermal Device - Winding	None

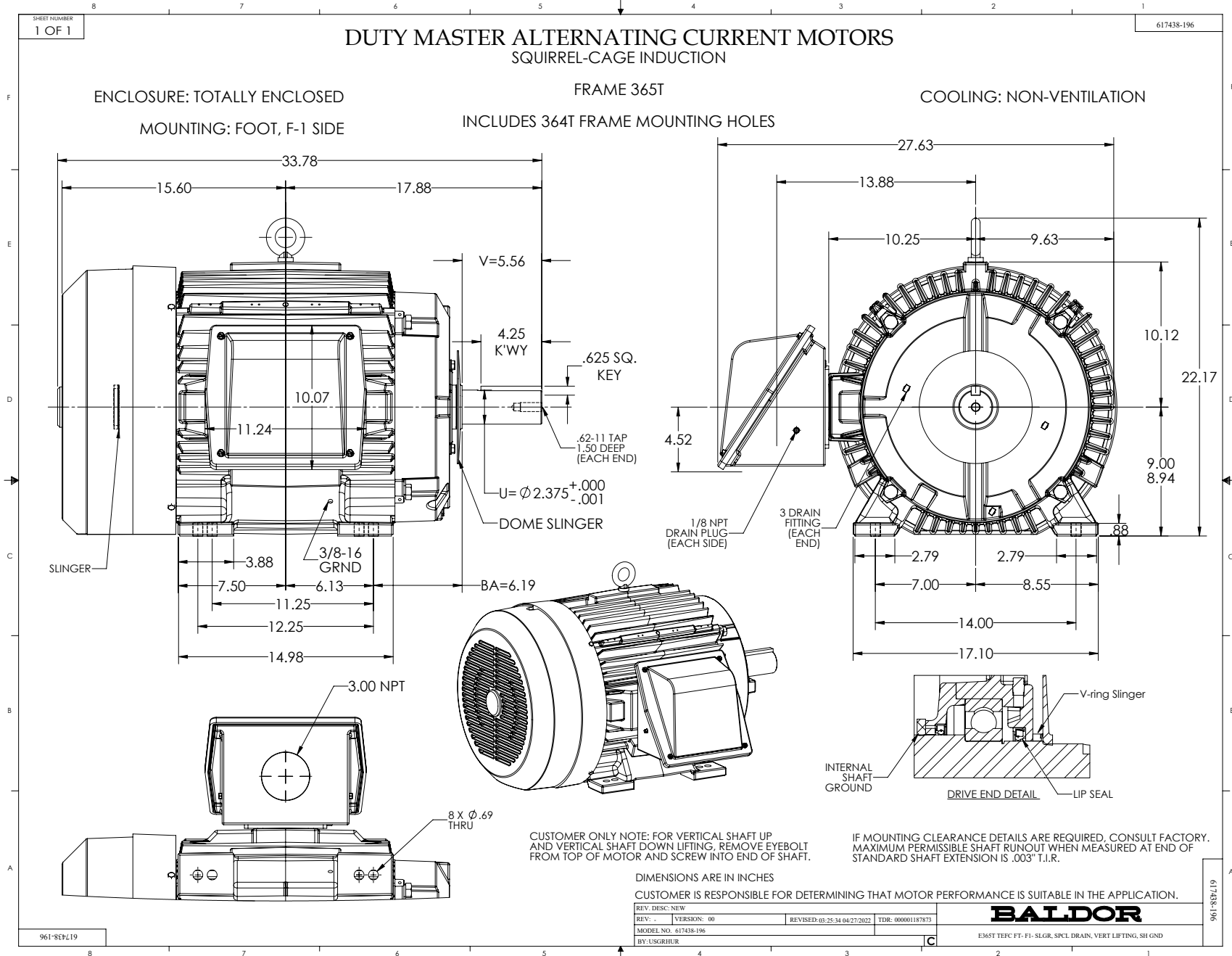
Nameplate

000613007EW

CAT.NO.	ECTM4314T-5G		SPEC NO.	A36-6016-4086					
HP	60HP	AMPS	55	VOLTS	575	DESIGN	B		
FRAME	364T	RPM	1780	HZ	60	AMB	40	SF	1.15
DRIVE END BEARING	65BC03JGG30A		PH	3	DUTY	CONT	INSUL.CLASS	F	
OPP D.E. BEARING	65BC03JGG30A		TYPE	P	ENCL	TEFC	CODE	G	
D.E.BRG.DATA	6313		POWER FACTOR	84		NEMA NOM EFFICIENCY	95		
O.D.E.BRG.DATA	6313		MAX CORR KVAR	13.60		GUARANTEED EFFICIENCY	94.1		
3/4 LOAD EFF.	95		NEMA NOM/CSA QUOTED EFF						
SER.NO.			MOTOR WEIGHT						

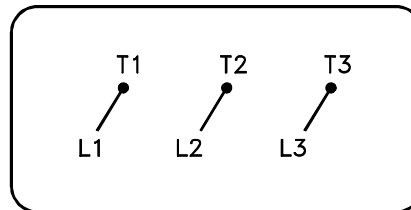
000901002AAA

INV DUTY 20:1 VT



416820-036

A-C MOTOR
CONNECTION DIAGRAM
STANDARD 3 LEAD CONNECTED



(N.P. 1575-BA)

416820-036

REV. DESC: LOADED TO BUS, C/R 335225		
REV. LTR: -	VERSION: 00	TDR: 000000538207
FILE: \MGA\00000\682	REVISED: 11:54:06 04/30/2010	
MTL: -	BY: RAGRA	

BALDOR

CONN DIAG - STANDARD 3 LEAD
SH 1 of 1