

**BALDOR • RELIANCE**

---

# Customer information packet

## ECTM4312T-5G

50HP, 1185RPM, 3PH, 60HZ, 364T, A36062M, TEFC

Class - None

Division - Not Applicable

## Specifications

Enclosure	TEFC
Frame	364T
Frame Material	Iron
Frequency	60.00 Hz
Haz Area Class and Group	None
Haz Area Division	Not Applicable
Motor Letter Type	Three Phase
Output @ Frequency	50.000 HP @ 60 HZ
Phase	3
Synchronous Speed @ Frequency	1200 RPM @ 60 HZ
Voltage @ Frequency	575.0 V @ 60 HZ
Agency Approvals	CCSAUSEEV
Ambient Temperature	40 °C
Auxillary Box	No Auxillary Box
Base Indicator	Rigid
Bearing Grease Type	Polyrex EM (-20F +300F)
Current @ Voltage	49.300 A @ 575.0 V
Design Code	B
Drip Cover	No Drip Cover
Duty Rating	CONT
Efficiency @ 100% Load	94.1 %
Feedback Device	NO FEEDBACK
Heater Indicator	Heater Included, 115 V
High Voltage Full Load Amps	49.3 a
Insulation Class	F
Inverter Code	Inverter Ready
KVA Code	G
Lifting Lugs	Standard Lifting Lugs
Motor Lead Quantity/Wire Size	3 @ 6 AWG
Motor Standards	NEMA
Motor Type	A36062M
Mounting Arrangement	F1

## Part detail

Revision	B
Type	AC
Mech. spec.	
Base	
Status	PRD/A
Elec. spec.	A36WG0748
Layout	617438-196
Eff. date	06-06-2023
CD Diagram	416820-036
Poles	06
Leads	3#6
Proprietary	False
Created date	04-12-2022

<b>Number of Poles</b>	6
<b>Overall Length</b>	33.78 IN
<b>Power Factor</b>	81
<b>Product Family</b>	Cooling Tower
<b>Pulley End Bearing Type</b>	Ball
<b>Pulley Face Code</b>	Standard
<b>Service Factor</b>	1.15
<b>Shaft Diameter</b>	2.374 IN
<b>Shaft Ground Indicator</b>	Shaft Grounding
<b>Shaft Rotation</b>	Reversible
<b>Shaft Slinger Indicator</b>	Shaft Slinger
<b>Speed</b>	1185 rpm
<b>Speed Code</b>	Single Speed
<b>Starting Method</b>	Direct on line
<b>Thermal Device - Bearing</b>	None
<b>Thermal Device - Winding</b>	None

**Nameplate**

**000613007EW**

<b>CAT.NO.</b>	ECTM4312T-5G		<b>SPEC NO.</b>	A36-0001-0748					
<b>HP</b>	50HP	<b>AMPS</b>	49.3	<b>VOLTS</b>	575	<b>DESIGN</b>	B		
<b>FRAME</b>	364T	<b>RPM</b>	1185	<b>HZ</b>	60	<b>AMB</b>	40	<b>SF</b>	1.15
<b>DRIVE END BEARING</b>	65BC03JGG30A		<b>PH</b>	3	<b>DUTY</b>	CONT	<b>INSUL.CLASS</b>	F	
<b>OPP D.E. BEARING</b>	65BC03JGG30A		<b>TYPE</b>	P	<b>ENCL</b>	TEFC	<b>CODE</b>	G	
<b>D.E.BRG.DATA</b>	6313		<b>POWER FACTOR</b>	81		<b>NEMA NOM EFFICIENCY</b>	94.1		
<b>O.D.E.BRG.DATA</b>	6313		<b>MAX CORR KVAR</b>	14		<b>GUARANTEED EFFICIENCY</b>	93		
<b>3/4 LOAD EFF.</b>	94.1		<b>NEMA NOM/CSA QUOTED EFF</b>						
<b>SER.NO.</b>			<b>MOTOR WEIGHT</b>						

---

000901002AAA

---

INV DUTY 20:1 VT

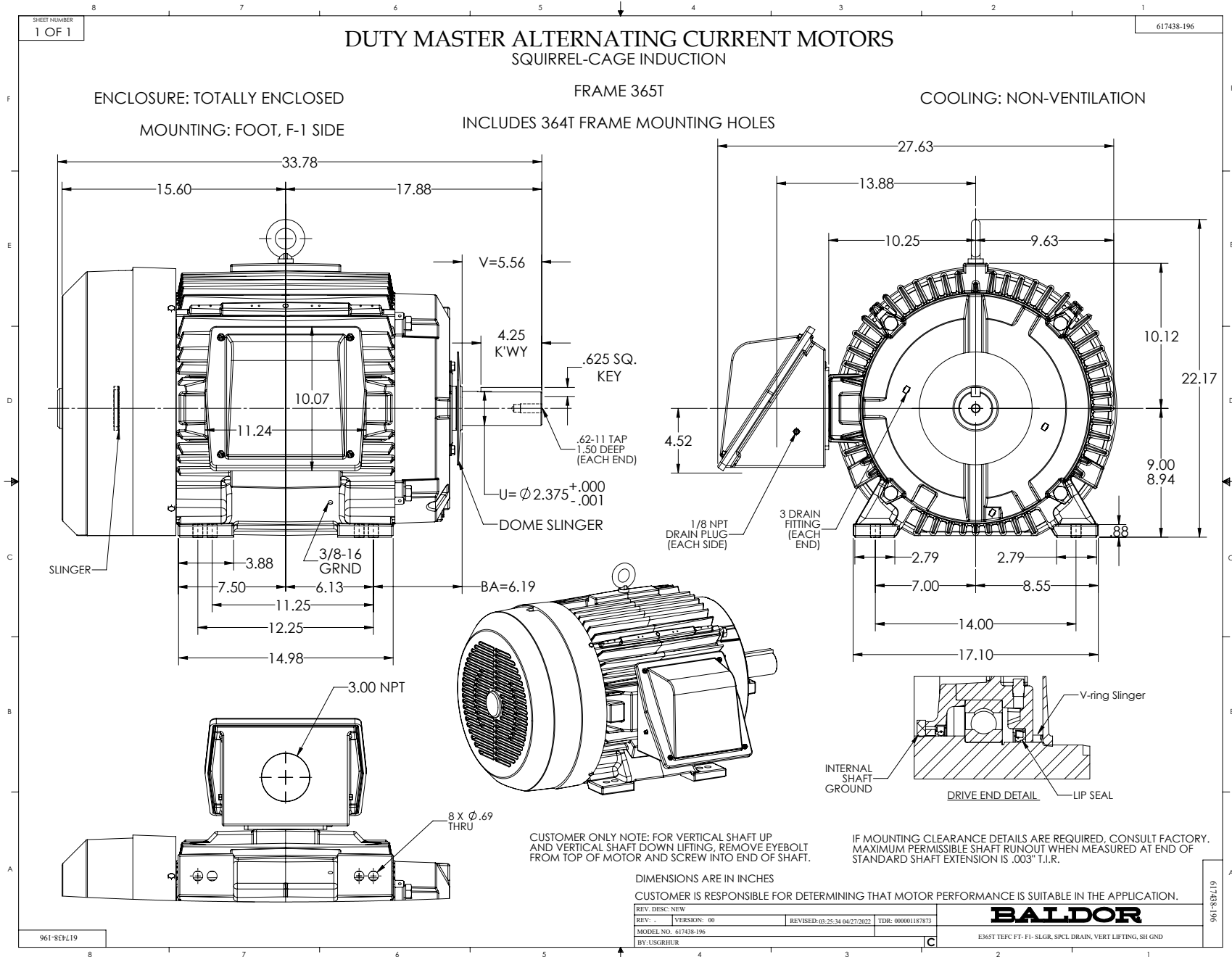

---











416820-036

A-C MOTOR  
CONNECTION DIAGRAM  
STANDARD 3 LEAD CONNECTED



(N.P. 1575-BA)

416820-036

REV. DESC: LOADED TO BUS, C/R 335225		
REV. LTR: -	VERSION: 00	TDR: 000000538207
FILE: \MGA\00000\682	REVISED: 11:54:06 04/30/2010	
MTL: -	BY: RAGRA	

**BALDOR**

CONN DIAG - STANDARD 3 LEAD  
SH 1 of 1