

**BALDOR • RELIANCE**

---

# Customer information packet

## ECTM3774T-G-AO

10 AIR OVERHP, 1765RPM, 3PH, 60HZ, 215T, 0748

Class - None

Division - Not Applicable

## Specifications

Enclosure	TEAO
Frame	215T
Frame Material	Iron
Frequency	60.00 Hz
Haz Area Class and Group	None
Haz Area Division	Not Applicable
Motor Letter Type	Three Phase
Output @ Frequency	10.000 HP @ 60 HZ
Phase	3
Synchronous Speed @ Frequency	1800 RPM @ 60 HZ
Voltage @ Frequency	230.0 V @ 60 HZ 460.0 V @ 60 HZ
Agency Approvals	CSA EEV NEMA PREMIUM NEMA_PREMIUM UR
Ambient Temperature	40 °C
Auxillary Box	No Auxillary Box
Auxillary Box Lead Termination	None
Base Indicator	Rigid
Bearing Grease Type	Polyrex EM (-20F +300F)
Blower	None
Current @ Voltage	27.000 A @ 208.0 V 24.600 A @ 230.0 V 12.300 A @ 460.0 V
Design Code	B
Drip Cover	No Drip Cover
Duty Rating	CONT
Efficiency @ 100% Load	91.7 %
Electrically Isolated Bearing	Not Electrically Isolated
Feedback Device	NO FEEDBACK
Front Shaft Indicator	None

## Part detail

Revision	D
Type	AC
Mech. spec.	07D709
Base	
Status	PRD/A
Elec. spec.	07WGT511
Layout	07LYD709
Eff. date	09-08-2023
CD Diagram	CD0005
Poles	04
Leads	9#14
Proprietary	False
Created date	04-05-2022

Heater Indicator	Heater Included, 115 V
High Voltage Full Load Amps	12.3 a
Insulation Class	F
Inverter Code	Inverter Ready
KVA Code	H
Lifting Lugs	Vertical Lifting Lugs
Locked Bearing Indicator	Locked Bearing
Motor Lead Quantity/Wire Size	9 @ 14 AWG
Motor Lead Termination	Flying Leads
Motor Standards	NEMA
Motor Type	0748M
Mounting Arrangement	F1
Number of Poles	4
Overall Length	19.62 IN
Power Factor	83
Product Family	Chemical Processing (Not DC)
Pulley End Bearing Type	Sealed Bearing
Pulley Face Code	Standard
Pulley Shaft Indicator	Tapped & Key
Rodent Screen	None
Service Factor	1.15
Shaft Diameter	1.375 IN
Shaft Ground Indicator	Shaft Grounding
Shaft Rotation	Reversible
Shaft Slinger Indicator	Shaft Slinger
Speed	1765 rpm
Speed Code	Single Speed
Starting Method	Direct on line
Thermal Device - Bearing	None
Thermal Device - Winding	None
Vibration Sensor Indicator	No Vibration Sensor
Winding Thermal 1	None
Winding Thermal 2	None

**Nameplate**

<b>NP2178</b>									
<b>CAT.NO.</b>	ECTM3774T-G-AO								
<b>SPEC.</b>	07D709T511G1								
<b>HP</b>	10 AIR OVER								
<b>VOLTS</b>	230/460								
<b>AMP</b>	24.6/12.3								
<b>RPM</b>	1765								
<b>FRAME</b>	215T		<b>HZ</b>	60		<b>PH</b>	3		
<b>SER.F.</b>	1.15	<b>CODE</b>	H	<b>DES</b>	B	<b>CL</b>	F		
<b>NEMA-NOM-EFF</b>	91.7	<b>PF</b>	83						
<b>RATING</b>	40C AMB-CONT								
<b>CC</b>									
<b>DE</b>	6307	<b>ODE</b>	6206						
<b>ENCL</b>	TEAO	<b>SN</b>							
	INV DUT 20:1 VT								

**AC Induction Motor Performance Data**

Record # 92601

Typical performance - not guaranteed values

Winding: 07WGT511-R008		Type: 0748M	Enclosure: TEFC	
<b>Nameplate Data</b>			<b>460 V, 60 Hz: High Voltage Connection</b>	
Rated Output (HP)	10	Full Load Torque	29.8 LB-FT	
Volts	230/460	Start Configuration	direct on line	
Full Load Amps	24.6/12.3	Breakdown Torque	84.1 LB-FT	
R.P.M.	1765	Pull-up Torque	39.8 LB-FT	
Hz	60 Phase	Locked-rotor Torque	50.9 LB-FT	
NEMA Design Code	B KVA Code	Starting Current	85.9 A	
Service Factor (S.F.)	1.15	No-load Current	4.67 A	
NEMA Nom. Eff.	91.7 Power Factor	Line-line Res. @ 25°C	1.09 Ω	
Rating - Duty	40C AMB-CONT	Temp. Rise @ Rated Load	70°C	
S.F. Amps	28.2/14.1	Temp. Rise @ S.F. Load	87°C	
		Locked-rotor Power Factor	35.2	
		Rotor inertia	1.18 lb-ft <sup>2</sup>	

**Load Characteristics 460 V, 60 Hz, 10 HP**

% of Rated Load	25	50	75	100	125	150	S.F.
Power Factor	48	70	79	83	85	85	84
Efficiency	89.7	92.7	92.6	91.6	90.6	88.8	91
Speed	1791	1783	1774	1763	1752	1739	1756
Line amperes	5.44	7.24	9.6	12.3	15.3	18.6	14.1

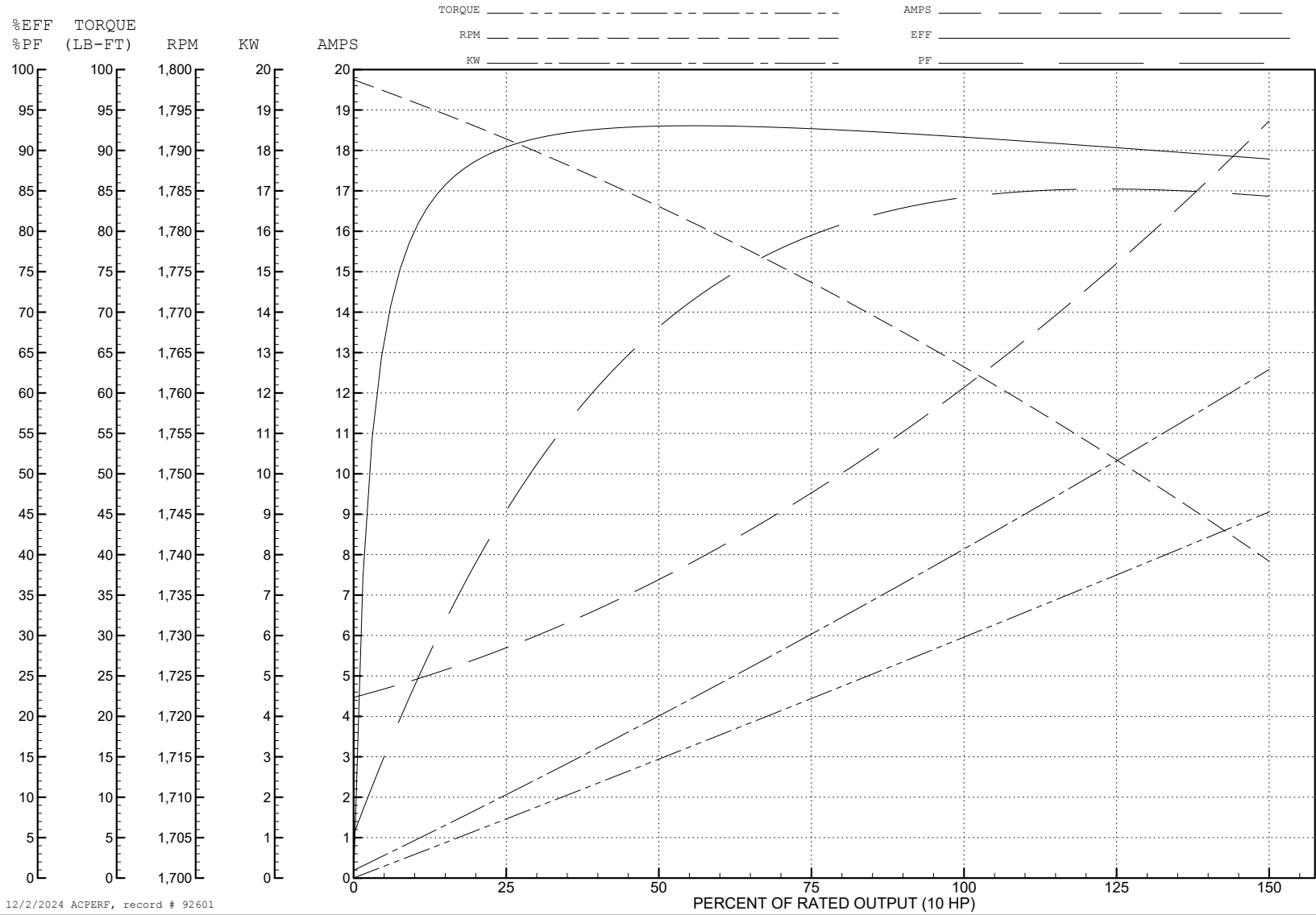
ABB Motors and Mechanical Inc.

WINDING # 07WGT511

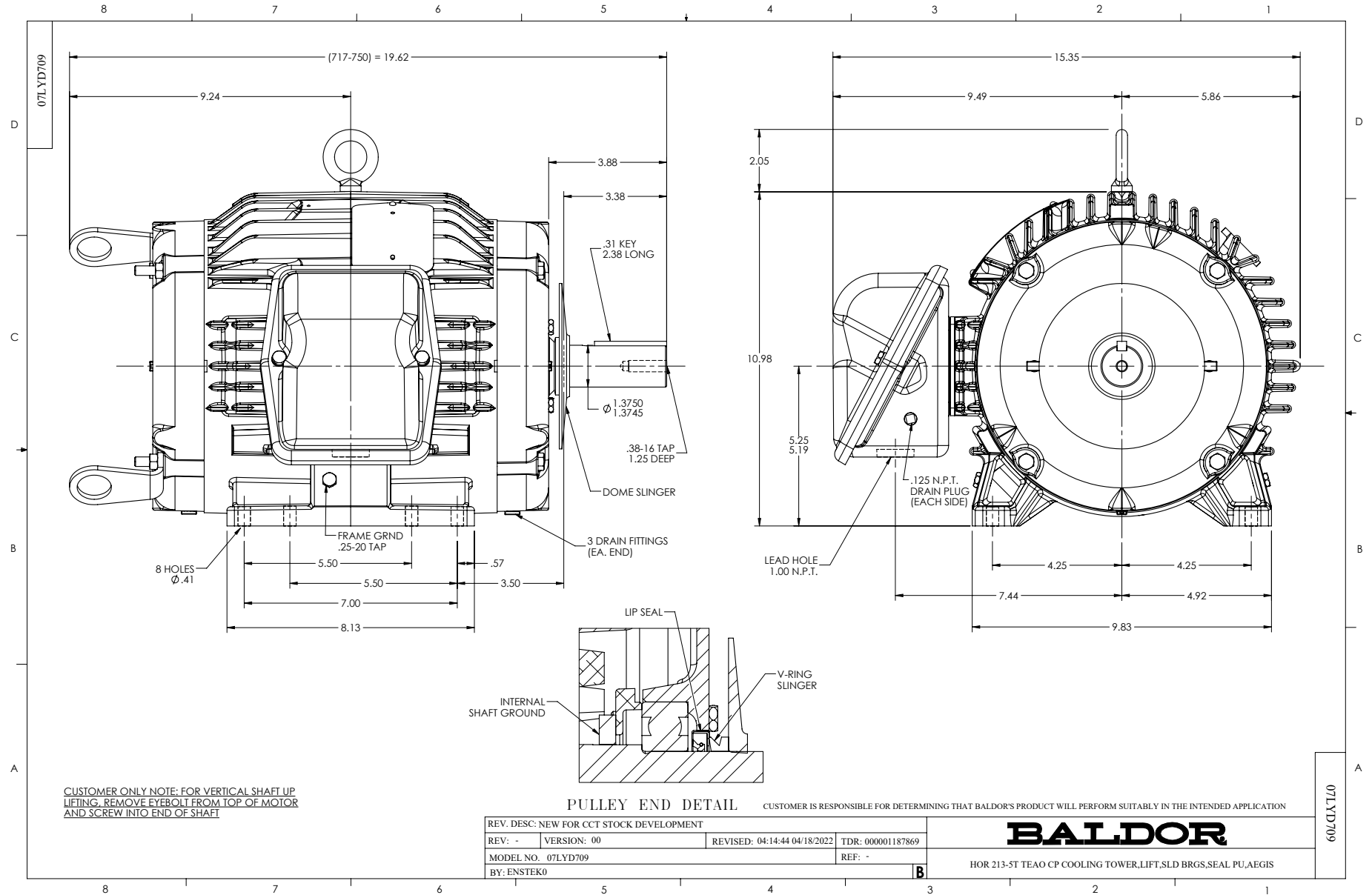
10 HP 3 PH 60 HZ 1765 RPM 460 V 0748M

Typical performance - not guaranteed values.

TORQUES (LB-FT): PO=84.1 PU=39.8 LR=50.9 LRA=85.9



12/2/2024 ACPERF, record # 92601



CUSTOMER ONLY NOTE: FOR VERTICAL SHAFT UP LIFTING, REMOVE EYEBOLT FROM TOP OF MOTOR AND SCREW INTO END OF SHAFT

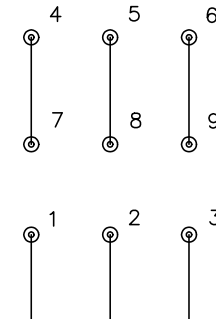
CD0005



LOW VOLTAGE  
(2Y)



HIGH VOLTAGE  
(1Y)



NOTES:

1. INTERCHANGE ANY TWO LINE LEADS TO REVERSE ROTATION.
2. OPTIONAL THERMOSTATS ARE PROVIDED WHEN SPECIFIED.
3. ACTUAL NUMBER OF INTERNAL PARALLEL CIRCUITS MAY BE A MULTIPLE OF THOSE SHOWN ABOVE.
4. LEAD COLORS ARE OPTIONAL. LEADS MUST ALWAYS BE NUMBERED AS SHOWN.

CD0005

REV. DESC: REVISE TO SHOW OPTIONAL COLORS			
REV. LTR: E	BY: JLP	REVISED: 01/19/99 10:15	TDR: 0171435
S00000		FILE: AAA00005140	MDL: -
		MTL: -	

**BALDOR ELECTRIC Co.**

3PH, DV, 9 LEADS