



Customer information packet

ECTM3768T

5 AIR OVERHP, 1160RPM, 3PH, 60HZ, 215T, 0748M

Class - None

Division - Not Applicable

Specifications

Enclosure	TEAO
Frame	215T
Frame Material	Iron
Frequency	60.00 Hz
Haz Area Class and Group	None
Haz Area Division	Not Applicable
Motor Letter Type	Three Phase
Output @ Frequency	5.000 HP @ 60 HZ
Phase	3
Synchronous Speed @ Frequency	1200 RPM @ 60 HZ
Voltage @ Frequency	460.0 V @ 60 HZ 230.0 V @ 60 HZ
Agency Approvals	CSA CSA EEV UR
Ambient Temperature	40 °C
Auxillary Box	No Auxillary Box
Auxillary Box Lead Termination	None
Base Indicator	Rigid
Bearing Grease Type	Polyrex EM (-20F +300F)
Blower	None
Current @ Voltage	15.800 A @ 208.0 V 7.300 A @ 460.0 V 14.600 A @ 230.0 V
Design Code	A
Drip Cover	No Drip Cover
Duty Rating	CONT
Efficiency @ 100% Load	90.2 %
Electrically Isolated Bearing	Not Electrically Isolated
Feedback Device	NO FEEDBACK
Front Face Code	Standard
Front Shaft Indicator	None

Part detail

Revision	M
Type	AC
Mech. spec.	07N391
Base	
Status	PRD/A
Elec. spec.	07WGX823
Layout	07LYN391
Eff. date	06-06-2024
CD Diagram	CD0005
Poles	06
Leads	9#14
Proprietary	False
Created date	08-14-2015

Heater Indicator	No Heater
High Voltage Full Load Amps	7.3 a
Insulation Class	F
Inverter Code	Inverter Ready
KVA Code	K
Lifting Lugs	Vertical Lifting Lugs
Locked Bearing Indicator	Locked Bearing
Motor Lead Exit	Ko Box
Motor Lead Quantity/Wire Size	9 @ 14 AWG
Motor Lead Termination	Flying Leads
Motor Standards	NEMA
Motor Type	0748M
Mounting Arrangement	F1
Number of Poles	6
Overall Length	19.54 IN
Power Factor	72
Product Family	Chemical Processing (Not DC)
Pulley End Bearing Type	Sealed Bearing
Pulley Face Code	Standard
Pulley Shaft Indicator	Tapped & Key
Rodent Screen	None
Service Factor	1.15
Shaft Diameter	1.375 IN
Shaft Extension Location	Pulley End
Shaft Ground Indicator	No Shaft Grounding
Shaft Rotation	Reversible
Shaft Slinger Indicator	Shaft Slinger
Speed	1160 rpm
Speed Code	Single Speed
Starting Method	Direct on line
Thermal Device - Bearing	None
Thermal Device - Winding	None
Vibration Sensor Indicator	No Vibration Sensor
Winding Thermal 1	None

Winding Thermal 2

None

Nameplate

NP2134									
CAT.NO.	ECTM3768T								
SPEC.	07N391X823G1								
HP	5 AIR OVER								
VOLTS	230/460								
AMP	14.6/7.3								
RPM	1160								
FRAME	215T	HZ	60	PH	3				
SER.F.	1.15	CODE	K	DES	A	CL	F		
NEMA-NOM-EFF	90.2	PF	72						
RATING	40C AMB-CONT								
CC									
DE	6307	ODE	6206						
ENCL	TEAO	SN							
	1275 FPM 170 CFM								

AC Induction Motor Performance Data

Record # 35561

Typical performance - not guaranteed values

Winding: 07WGX823-R002		Type: 0748M		Enclosure: TEAO		
Nameplate Data			460 V, 60 Hz: High Voltage Connection			
Rated Output (HP)	5	Full Load Torque	22.8 LB-FT			
Volts	230/460	Start Configuration	direct on line			
Full Load Amps	14.6/7.3	Breakdown Torque	77.4 LB-FT			
R.P.M.	1160	Pull-up Torque	46.7 LB-FT			
Hz	60 Phase	3	Locked-rotor Torque	56.1 LB-FT		
NEMA Design Code	A KVA Code	K	Starting Current	51.9 A		
Service Factor (S.F.)	1.15	No-load Current	3.7 A			
NEMA Nom. Eff.	90.2 Power Factor	72	Line-line Res. @ 25°C	1.59 Ω		
Rating - Duty	40C AMB-CONT	Temp. Rise @ Rated Load	50°C			
S.F. Amps		Temp. Rise @ S.F. Load	61°C			
		Locked-rotor Power Factor	22			
		Rotor inertia	1.19 LB-FT ²			

Load Characteristics 460 V, 60 Hz, 5 HP

% of Rated Load	25	50	75	100	125	150	S.F.
Power Factor	34	54	65	72	75	77	74
Efficiency	85.8	90.1	90.8	90.3	89.1	87.6	89.6
Speed	1190	1181	1173	1163	1151	1138	1156
Line amperes	4.01	4.79	5.88	7.29	8.77	10.4	8.18

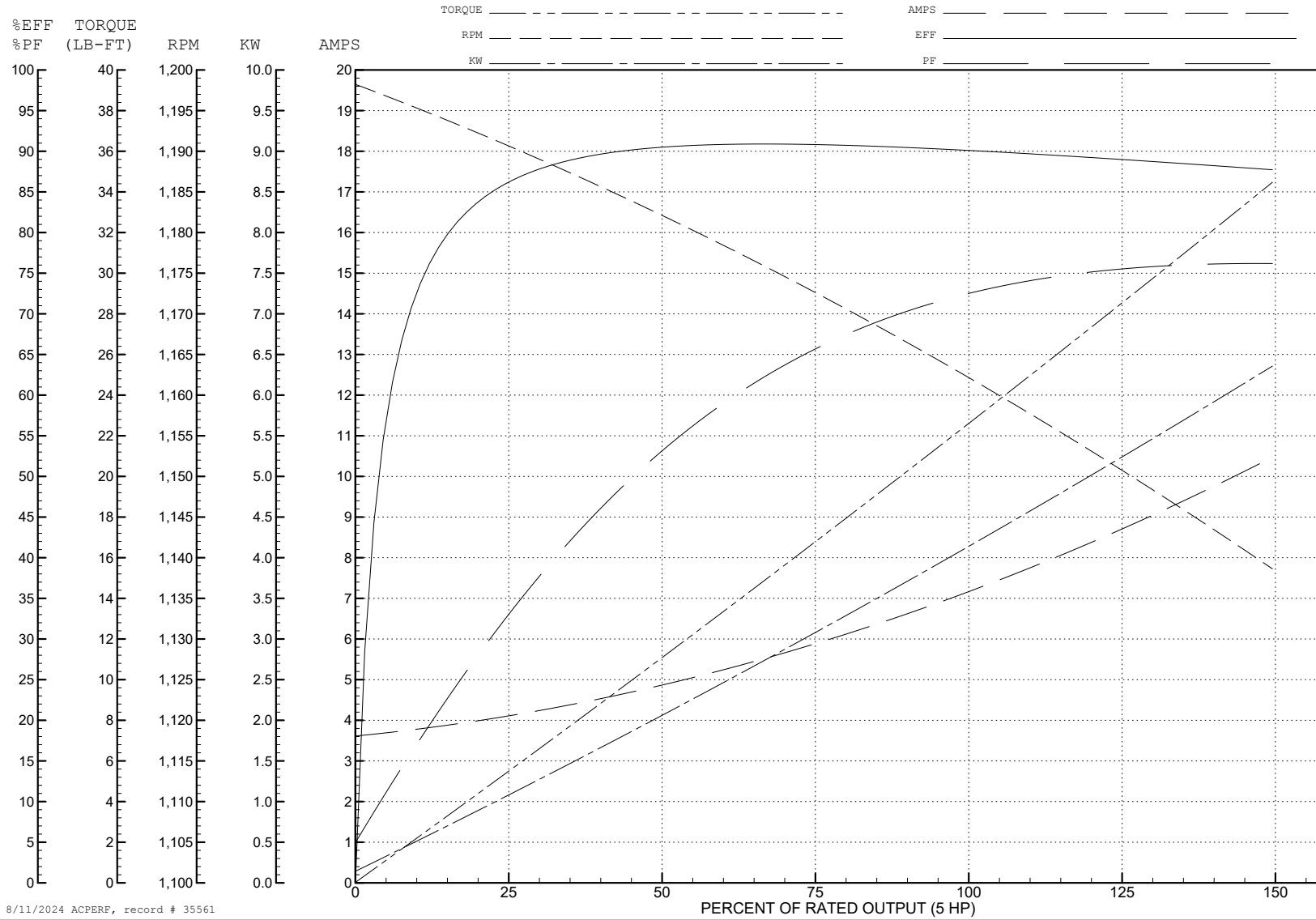
ABB Motors and Mechanical Inc.

WINDING # 07WGx823

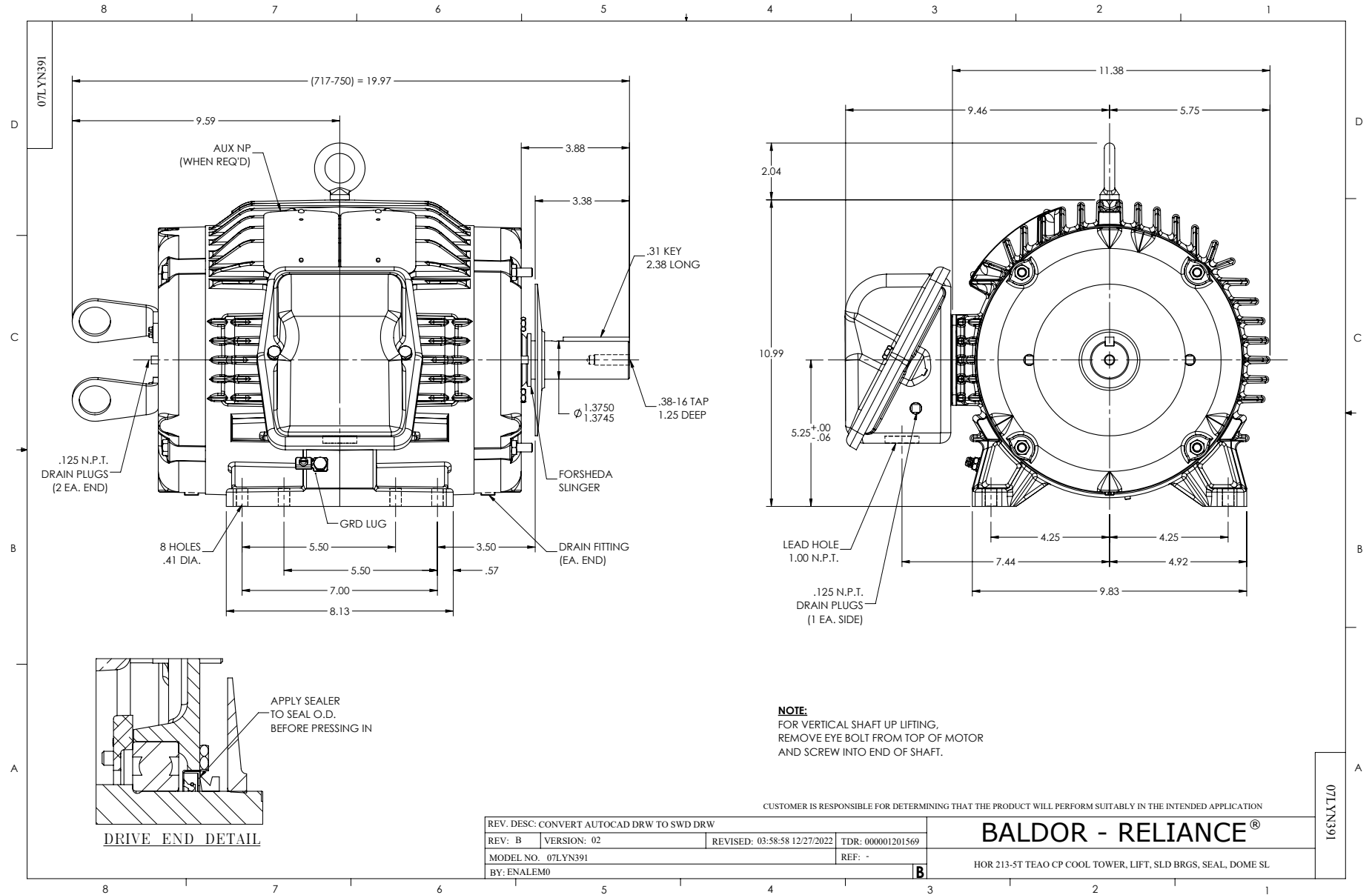
Typical performance - not guaranteed values.

5 HP 3 PH 60 HZ 1160 RPM 460 V 0748M

TORQUES (LB-FT): PO=77.4 PU=46.7 LR=56.1 LRA=51.9



8/11/2024 ACPERF, record # 35561



CD0005

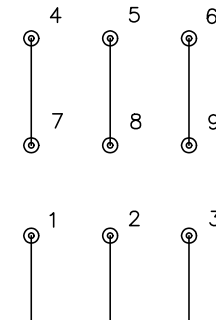


LOW VOLTAGE (2Y)



LINE

HIGH VOLTAGE (1Y)



LINE

NOTES:

1. INTERCHANGE ANY TWO LINE LEADS TO REVERSE ROTATION.
2. OPTIONAL THERMOSTATS ARE PROVIDED WHEN SPECIFIED.
3. ACTUAL NUMBER OF INTERNAL PARALLEL CIRCUITS MAY BE A MULTIPLE OF THOSE SHOWN ABOVE.
4. LEAD COLORS ARE OPTIONAL. LEADS MUST ALWAYS BE NUMBERED AS SHOWN.

CD0005

REV. DESC: REVISE TO SHOW OPTIONAL COLORS			
REV. LTR: E	BY: JLP	REVISED: 01/19/99 10:15	TDR: 0171435
S00000		FILE: AAA00005140	MDL: -
		MTL: -	

BALDOR ELECTRIC Co.

3PH, DV, 9 LEADS