

BALDOR • RELIANCE

Customer information packet

ECTM3768T-G-AO

5 AIR OVERHP, 1160RPM, 3PH, 60HZ, 215T, 0746M

Class - None

Division - Not Applicable

Specifications

Enclosure	TEAO
Frame	215T
Frame Material	Iron
Frequency	60.00 Hz
Haz Area Class and Group	None
Haz Area Division	Not Applicable
Motor Letter Type	Three Phase
Output @ Frequency	5.000 HP @ 60 HZ
Phase	3
Synchronous Speed @ Frequency	1200 RPM @ 60 HZ
Voltage @ Frequency	230.0 V @ 60 HZ 460.0 V @ 60 HZ
Agency Approvals	CSA EEV NEMA PREMIUM NEMA_PREMIUM UR
Ambient Temperature	40 °C
Auxillary Box	No Auxillary Box
Auxillary Box Lead Termination	None
Base Indicator	Rigid
Bearing Grease Type	Polyrex EM (-20F +300F)
Blower	None
Current @ Voltage	7.400 A @ 460.0 V 15.300 A @ 208.0 V 14.800 A @ 230.0 V
Design Code	A
Drip Cover	No Drip Cover
Duty Rating	CONT
Efficiency @ 100% Load	89.5 %
Electrically Isolated Bearing	Not Electrically Isolated
Feedback Device	NO FEEDBACK
Front Shaft Indicator	None

Part detail

Revision	C
Type	AC
Mech. spec.	07D709
Base	
Status	PRD/A
Elec. spec.	07WGY763
Layout	07LYD709
Eff. date	09-08-2023
CD Diagram	CD0005
Poles	06
Leads	9#14
Proprietary	False
Created date	04-05-2022

Heater Indicator	Heater Included, 115 V
High Voltage Full Load Amps	7.4 a
Insulation Class	F
Inverter Code	Inverter Ready
KVA Code	K
Lifting Lugs	Vertical Lifting Lugs
Locked Bearing Indicator	Locked Bearing
Motor Lead Quantity/Wire Size	9 @ 14 AWG
Motor Lead Termination	Flying Leads
Motor Standards	NEMA
Motor Type	0746M
Mounting Arrangement	F1
Number of Poles	6
Overall Length	19.62 IN
Power Factor	71
Product Family	Chemical Processing (Not DC)
Pulley End Bearing Type	Sealed Bearing
Pulley Face Code	Standard
Pulley Shaft Indicator	Tapped & Key
Rodent Screen	None
Service Factor	1.15
Shaft Diameter	1.375 IN
Shaft Ground Indicator	Shaft Grounding
Shaft Rotation	Reversible
Shaft Slinger Indicator	Shaft Slinger
Speed	1160 rpm
Speed Code	Single Speed
Starting Method	Direct on line
Thermal Device - Bearing	None
Thermal Device - Winding	None
Vibration Sensor Indicator	No Vibration Sensor
Winding Thermal 1	None
Winding Thermal 2	None

Nameplate

NP2178							
CAT.NO.	ECTM3768T-G-AO						
SPEC.	07D709Y763G1						
HP	5 AIR OVER						
VOLTS	230/460						
AMP	14.8/7.4						
RPM	1160						
FRAME	215T	HZ	60	PH	3		
SER.F.	1.15	CODE	K	DES	A	CL	F
NEMA-NOM-EFF	89.5	PF	71				
RATING	40C AMB-CONT						
CC							
DE	6307	ODE	6206				
ENCL	TEAO	SN					
	INV DUT 20:1 VT						

AC Induction Motor Performance Data

Record # 92600

Typical performance - not guaranteed values

Winding: 07WGY763-R022		Type: 0746M	Enclosure: TEAO	
Nameplate Data			460 V, 60 Hz: High Voltage Connection	
Rated Output (HP)	5 AIR OVER	Full Load Torque	22.8 LB-FT	
Volts	230/460	Start Configuration	direct on line	
Full Load Amps	14.8/7.4	Breakdown Torque	81.3 LB-FT	
R.P.M.	1160	Pull-up Torque	49.9 LB-FT	
Hz	60 Phase	3	Locked-rotor Torque	59.9 LB-FT
NEMA Design Code	A KVA Code	K	Starting Current	54.8 A
Service Factor (S.F.)		1.15	No-load Current	4.03 A
NEMA Nom. Eff.	89.5 Power Factor	71	Line-line Res. @ 25°C	1.64 Ω
Rating - Duty	40C AMB-CONT		Temp. Rise @ Rated Load	50°C
S.F. Amps	16.6/8.3		Temp. Rise @ S.F. Load	61°C
			Locked-rotor Power Factor	22.2
			Rotor inertia	1.14 lb-ft ²

Load Characteristics 460 V, 60 Hz, 5 HP

% of Rated Load	25	50	75	100	125	150	S.F.
Power Factor	32	51	63	70	74	76	72
Efficiency	84.9	89.7	90.6	90.4	89.2	87.7	89.7
Speed	1190	1181	1174	1164	1153	1141	1157
Line amperes	4.32	5.06	6.12	7.48	8.92	10.5	8.34

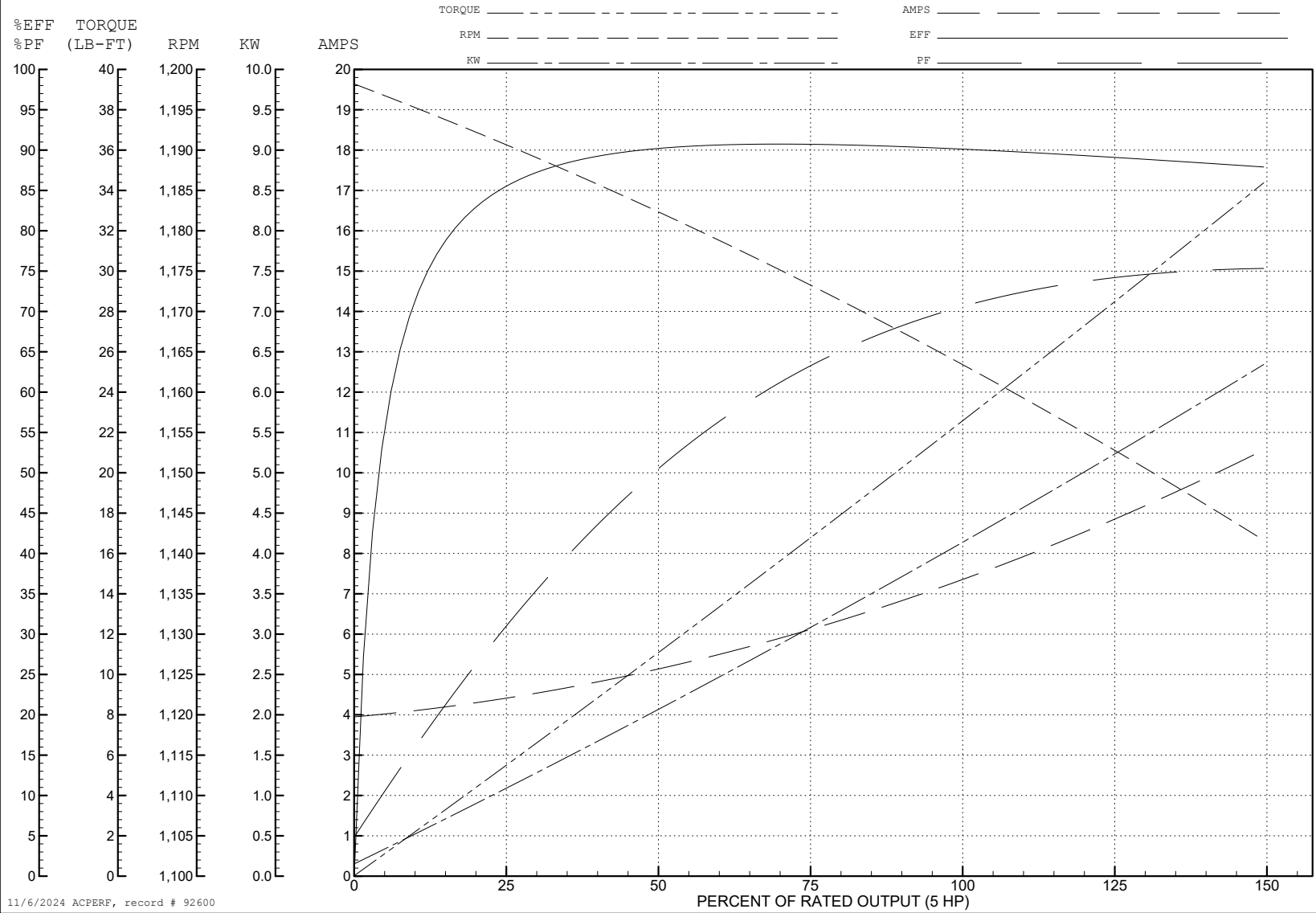
ABB Motors and Mechanical Inc.

WINDING # 07WGY763

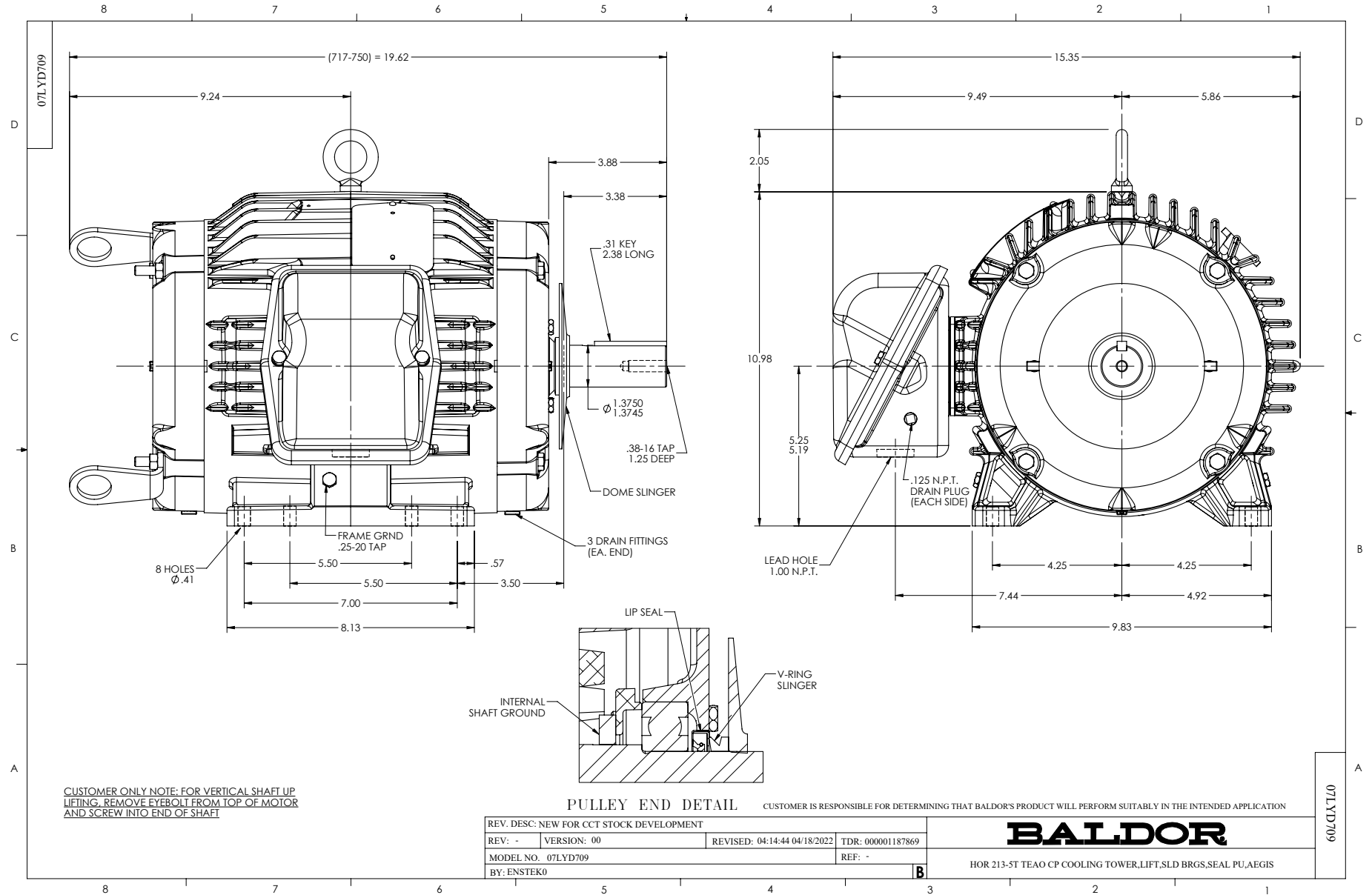
5 HP 3 PH 60 HZ 1160 RPM 460 V 0746M

Typical performance - not guaranteed values.

TORQUES (LB-FT): PO=81.3 PU=49.9 LR=59.9 LRA=54.8

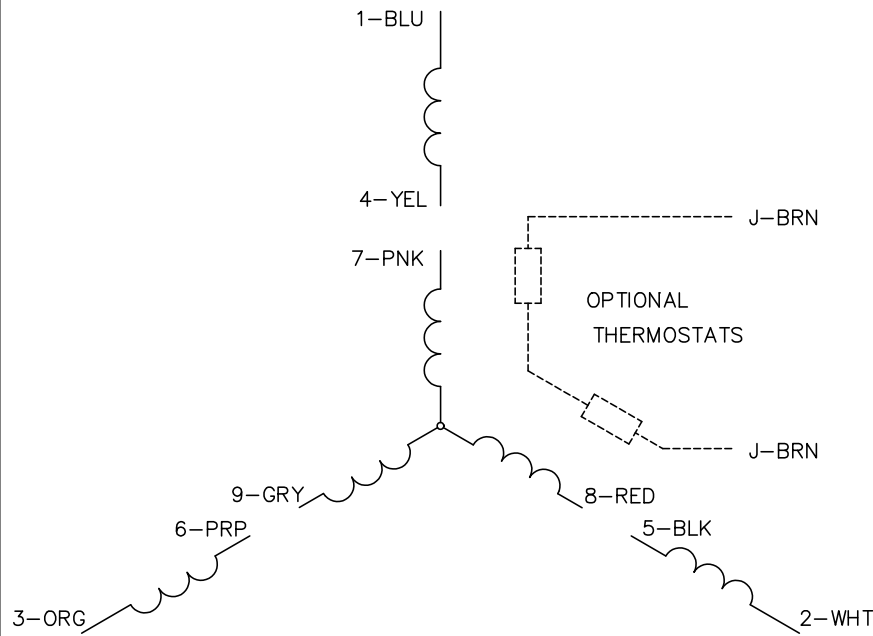


11/6/2024 ACPERF, record # 92600

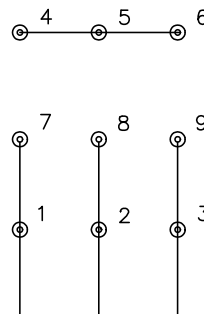


CUSTOMER ONLY NOTE: FOR VERTICAL SHAFT UP LIFTING, REMOVE EYEBOLT FROM TOP OF MOTOR AND SCREW INTO END OF SHAFT

CD0005

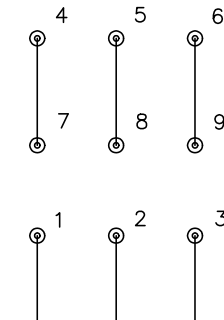


LOW VOLTAGE
(2Y)



LINE

HIGH VOLTAGE
(1Y)



LINE

NOTES:

1. INTERCHANGE ANY TWO LINE LEADS TO REVERSE ROTATION.
2. OPTIONAL THERMOSTATS ARE PROVIDED WHEN SPECIFIED.
3. ACTUAL NUMBER OF INTERNAL PARALLEL CIRCUITS MAY BE A MULTIPLE OF THOSE SHOWN ABOVE.
4. LEAD COLORS ARE OPTIONAL. LEADS MUST ALWAYS BE NUMBERED AS SHOWN.

CD0005

REV. DESC: REVISE TO SHOW OPTIONAL COLORS			
REV. LTR: E	BY: JLP	REVISED: 01/19/99 10:15	TDR: 0171435
S00000		FILE: AAA00005140	MDL: -
		MTL: -	

BALDOR ELECTRIC Co.

3PH, DV, 9 LEADS