



---

# Customer information packet

## ECTM3768T-5G

5HP, 1160RPM, 3PH, 60HZ, 215T, 0746M, TEFC, F1

Class - None

Division - Not Applicable

## Specifications

Enclosure	TEFC
Frame	215T
Frame Material	Iron
Frequency	60.00 Hz
Haz Area Class and Group	None
Haz Area Division	Not Applicable
Motor Letter Type	Three Phase
Output @ Frequency	5.000 HP @ 60 HZ
Phase	3
Synchronous Speed @ Frequency	1200 RPM @ 60 HZ
Voltage @ Frequency	575.0 V @ 60 HZ
Agency Approvals	CSA EEV NEMA PREMIUM NEMA_PREMIUM UR
Ambient Temperature	40 °C
Auxillary Box	No Auxillary Box
Auxillary Box Lead Termination	None
Base Indicator	Rigid
Bearing Grease Type	Polyrex EM (-20F +300F)
Blower	None
Current @ Voltage	6.100 A @ 575.0 V
Design Code	A
Drip Cover	No Drip Cover
Duty Rating	CONT
Efficiency @ 100% Load	89.5 %
Electrically Isolated Bearing	Not Electrically Isolated
Feedback Device	NO FEEDBACK
Front Shaft Indicator	None
Heater Indicator	Heater Included, 115 V
High Voltage Full Load Amps	6.1 a
Insulation Class	F

## Part detail

Revision	B
Type	AC
Mech. spec.	07D718
Base	
Status	PRD/A
Elec. spec.	07WGY332
Layout	07LYD718
Eff. date	06-08-2023
CD Diagram	CD0006
Poles	06
Leads	3#14
Proprietary	False
Created date	04-20-2022

<b>Inverter Code</b>	Inverter Ready
<b>KVA Code</b>	K
<b>Lifting Lugs</b>	Standard Lifting Lugs
<b>Locked Bearing Indicator</b>	Locked Bearing
<b>Motor Lead Quantity/Wire Size</b>	3 @ 14 AWG
<b>Motor Lead Termination</b>	Flying Leads
<b>Motor Standards</b>	NEMA
<b>Motor Type</b>	0746M
<b>Mounting Arrangement</b>	F1
<b>Number of Poles</b>	6
<b>Overall Length</b>	19.58 IN
<b>Power Factor</b>	69
<b>Product Family</b>	Chemical Processing (Not DC)
<b>Pulley End Bearing Type</b>	Sealed Bearing
<b>Pulley Face Code</b>	Standard
<b>Pulley Shaft Indicator</b>	Tapped & Key
<b>Rodent Screen</b>	None
<b>RoHS Status</b>	ROHS COMPLIANT
<b>Service Factor</b>	1.15
<b>Shaft Diameter</b>	1.375 IN
<b>Shaft Ground Indicator</b>	Shaft Grounding
<b>Shaft Rotation</b>	Reversible
<b>Shaft Slinger Indicator</b>	Shaft Slinger
<b>Speed</b>	1160 rpm
<b>Speed Code</b>	Single Speed
<b>Starting Method</b>	Direct on line
<b>Thermal Device - Bearing</b>	None
<b>Thermal Device - Winding</b>	None
<b>Vibration Sensor Indicator</b>	No Vibration Sensor
<b>Winding Thermal 1</b>	None
<b>Winding Thermal 2</b>	None

**Nameplate**

---

<b>NP1260</b>									
<b>CAT.NO.</b>	ECTM3768T-5G								
<b>SPEC.</b>	07D718Y332G1								
<b>HP</b>	5								
<b>VOLTS</b>	575								
<b>AMP</b>	6.1								
<b>RPM</b>	1160								
<b>FRAME</b>	215T	<b>HZ</b>	60	<b>PH</b>	3				
<b>SER.F.</b>	1.15	<b>CODE</b>	K	<b>DES</b>	A	<b>CL</b>	F		
<b>NEMA-NOM-EFF</b>	89.5	<b>PF</b>	69						
<b>RATING</b>	40C AMB-CONT								
<b>CC</b>									
<b>DE</b>	6307	<b>ODE</b>	6206						
<b>ENCL</b>	TEFC	<b>SN</b>							
	INV DUTY 20:1 VT								

---

**AC Induction Motor Performance Data**

Record # 38796

Typical performance - not guaranteed values

<b>Winding: 07WGY332-R001</b>		<b>Type: 0746M</b>		<b>Enclosure: TEFC</b>	
<b>Nameplate Data</b>			<b>575 V, 60 Hz: Single Voltage Motor</b>		
<b>Rated Output (HP)</b>	5	<b>Full Load Torque</b>	22.7 LB-FT		
<b>Volts</b>	575	<b>Start Configuration</b>	direct on line		
<b>Full Load Amps</b>	6.1	<b>Breakdown Torque</b>	83 LB-FT		
<b>R.P.M.</b>	1160	<b>Pull-up Torque</b>	51.4 LB-FT		
<b>Hz</b>	60 <b>Phase</b>	3	<b>Locked-rotor Torque</b>	61.7 LB-FT	
<b>NEMA Design Code</b>	A <b>KVA Code</b>	K	<b>Starting Current</b>	45.1 A	
<b>Service Factor (S.F.)</b>		1.15	<b>No-load Current</b>	3.35 A	
<b>NEMA Nom. Eff.</b>	89.5 <b>Power Factor</b>	69	<b>Line-line Res. @ 25°C</b>	2.55 Ω	
<b>Rating - Duty</b>		40C AMB-CONT	<b>Temp. Rise @ Rated Load</b>	52°C	
<b>S.F. Amps</b>			<b>Temp. Rise @ S.F. Load</b>	63°C	

**Load Characteristics 575 V, 60 Hz, 5 HP**

<b>% of Rated Load</b>	<b>25</b>	<b>50</b>	<b>75</b>	<b>100</b>	<b>125</b>	<b>150</b>	<b>S.F.</b>
<b>Power Factor</b>	31	50	62	69	73	76	71
<b>Efficiency</b>	84.3	89.4	90.3	89.9	88.9	87.7	89.3
<b>Speed</b>	1190	1182	1174	1165	1154	1142	1158
<b>Line amperes</b>	3.58	4.16	4.98	6.06	7.19	8.45	6.74

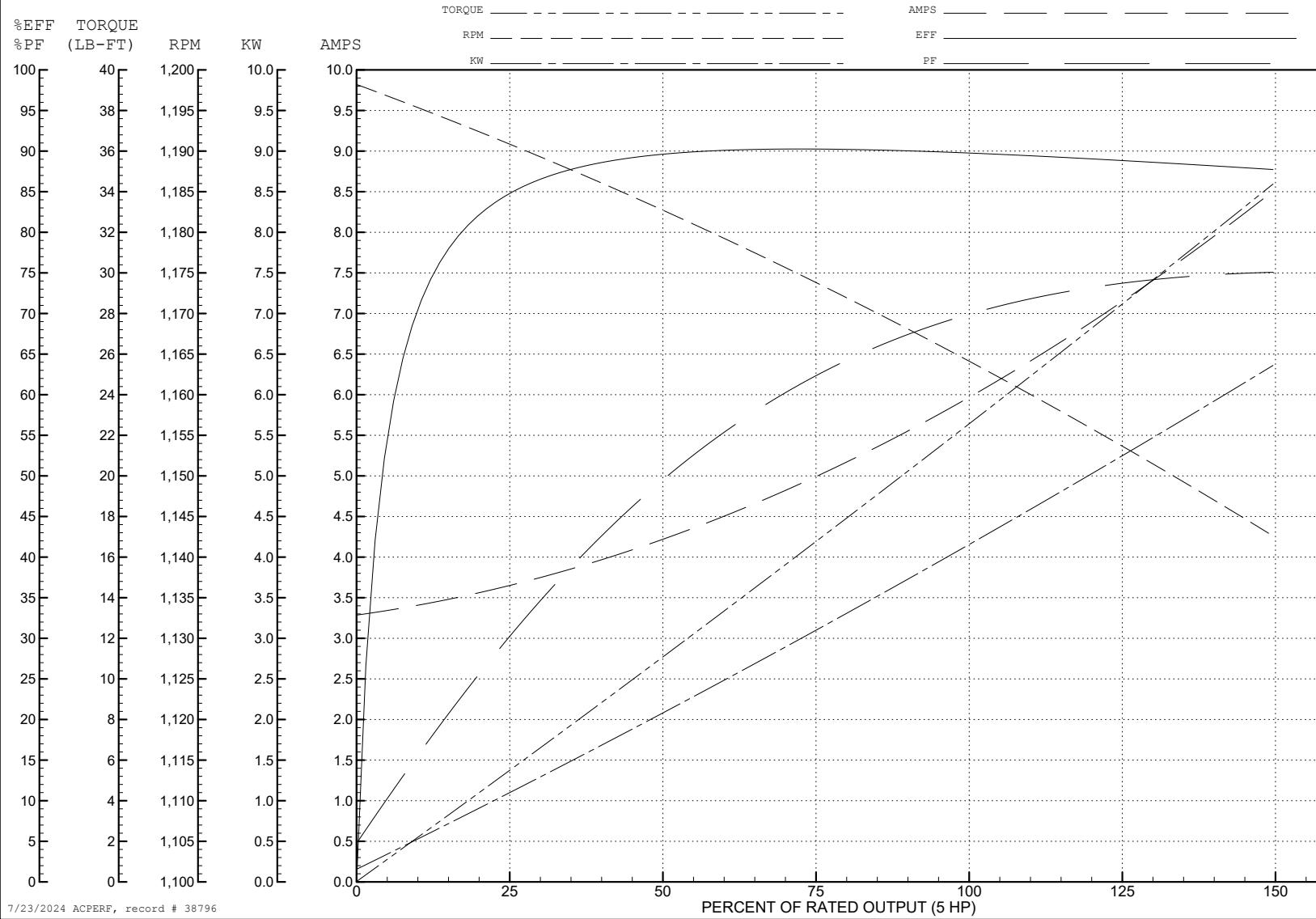
ABB Motors and Mechanical Inc.

WINDING # 07WGY332

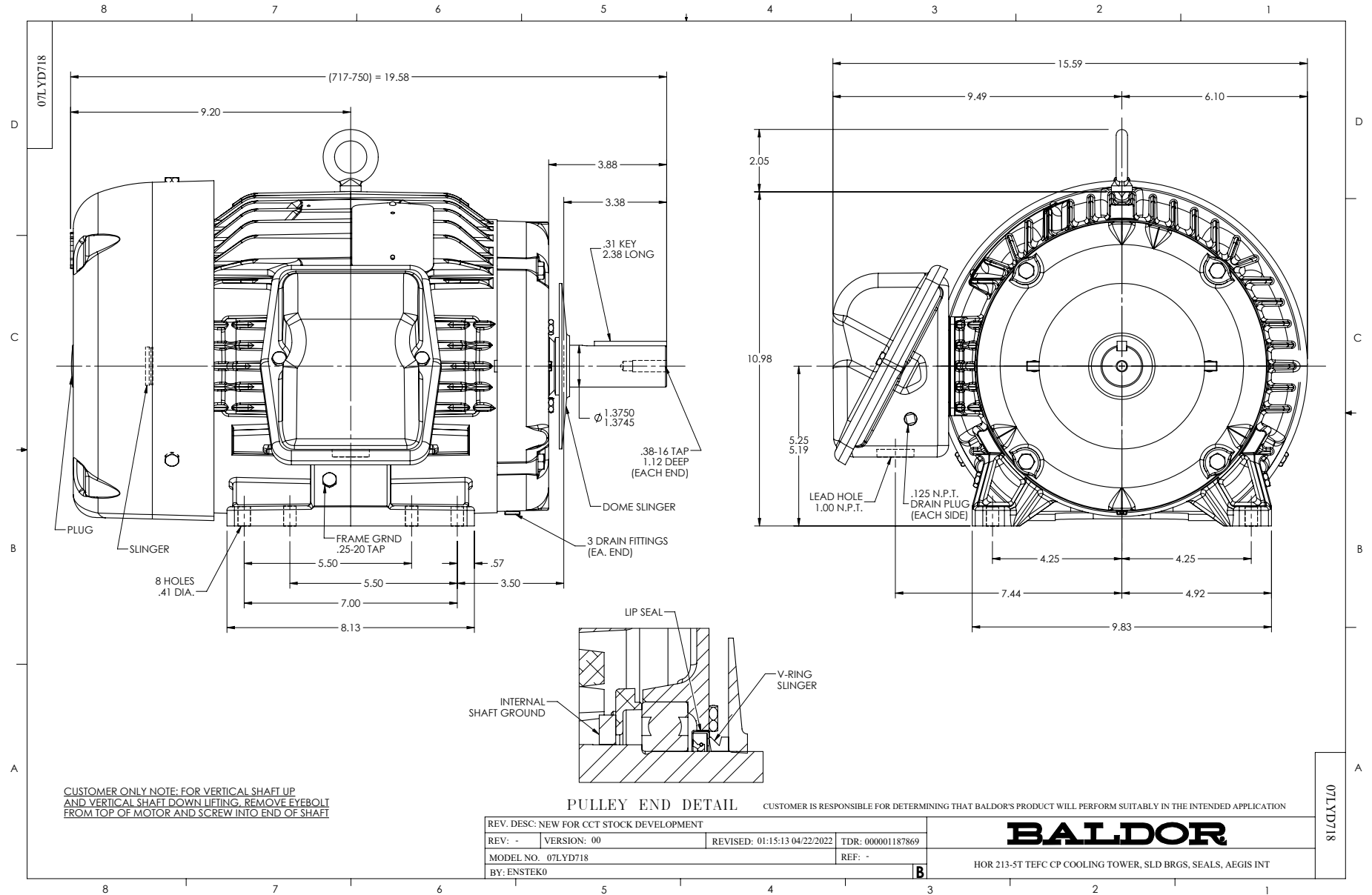
5 HP 3 PH 60 HZ 1160 RPM 575 V 0746M

Typical performance - not guaranteed values.

TORQUES (LB-FT): PO=83 PU=51.4 LR=61.7 LRA=45.1

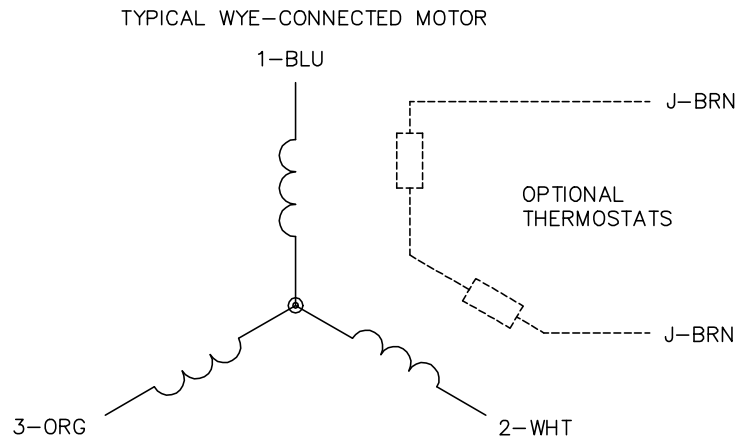


7/23/2024 ACPERF, record # 38796



CUSTOMER ONLY NOTE: FOR VERTICAL SHAFT UP AND VERTICAL SHAFT DOWN LIFTING, REMOVE EYEBOLT FROM TOP OF MOTOR AND SCREW INTO END OF SHAFT

CD0006



NOTES:

1. THREE LEAD MOTOR MAY BE EITHER WYE CONNECTED OR DELTA CONNECTED.
2. INTERCHANGE ANY TWO LINE LEADS TO REVERSE ROTATION.
3. OPTIONAL THERMOSTATS ARE PROVIDED WHEN SPECIFIED.
4. ACTUAL NUMBER OF INTERNAL PARALLEL CIRCUITS MAY VARY.
5. LEAD COLORS ARE OPTIONAL. LEADS MUST BE NUMBERED AS SHOWN.

CD0006

REV. DESC: ADD CLASS CONN00000007		
REV. LTR: E	VERSION: 01	TDR: 000001099922
FILE: \AAA\00005\141	REVISED: 10:24:49 02/19/2019	BY: ENBRIRO
MTL: -	© □	

**BALDOR - RELIANCE®**

3PH, SV, 3 LEADS, WYE OR DELTA CONNECTED

SH 1 of 1