

BALDOR • RELIANCE

Customer information packet

ECTM3708T

5 AIR OVERHP, 1165RPM, 3PH, 60HZ, 213TZ, 3752

Class - None

Division - Not Applicable

Specifications

Enclosure	TEAO
Frame	213TZ
Frame Material	Steel
Frequency	60.00 Hz
Haz Area Class and Group	None
Haz Area Division	Not Applicable
Motor Letter Type	Three Phase
Output @ Frequency	5.000 HP @ 60 HZ
Phase	3
Synchronous Speed @ Frequency	1200 RPM @ 60 HZ
Voltage @ Frequency	230.0 V @ 60 HZ 460.0 V @ 60 HZ
Ambient Temperature	40 °C
Auxillary Box	No Auxillary Box
Auxillary Box Lead Termination	None
Base Indicator	Rigid
Bearing Grease Type	Polyrex EM (-20F +300F)
Blower	None
Current @ Voltage	14.400 A @ 230.0 V 15.600 A @ 208.0 V 7.200 A @ 460.0 V
Design Code	A
Drip Cover	No Drip Cover
Duty Rating	CONT
Efficiency @ 100% Load	89.5 %
Electrically Isolated Bearing	Not Electrically Isolated
Feedback Device	NO FEEDBACK
Front Face Code	Standard
Front Shaft Indicator	None
Heater Indicator	No Heater
High Voltage Full Load Amps	7.2 a
Insulation Class	F

Part detail

Revision	J
Type	AC
Mech. spec.	37Q128
Base	
Status	PRD/A
Elec. spec.	37WGQ067
Layout	37LYQ128
Eff. date	06-27-2024
CD Diagram	CD0005
Poles	06
Leads	9#14
Proprietary	False
Created date	09-21-2017

Inverter Code	Inverter Ready
KVA Code	K
Lifting Lugs	Standard Lifting Lugs
Locked Bearing Indicator	No Locked Bearing
Motor Lead Exit	Ko Box
Motor Lead Quantity/Wire Size	9 @ 14 AWG
Motor Lead Termination	Flying Leads
Motor Standards	NEMA
Motor Type	3752M
Mounting Arrangement	F1
Number of Poles	6
Overall Length	18.95 IN
Power Factor	71
Product Family	Weather Proof
Pulley End Bearing Type	Ball
Pulley Face Code	Standard
Pulley Shaft Indicator	Tapped & Key
Rodent Screen	None
RoHS Status	ROHS COMPLIANT
Service Factor	1.00
Shaft Diameter	1.375 IN
Shaft Extension Location	Pulley End
Shaft Ground Indicator	No Shaft Grounding
Shaft Rotation	Reversible
Shaft Slinger Indicator	Shaft Slinger
Speed	1165 rpm
Speed Code	Single Speed
Starting Method	Direct on line
Thermal Device - Bearing	None
Thermal Device - Winding	None
Vibration Sensor Indicator	No Vibration Sensor
Winding Thermal 1	None
Winding Thermal 2	None

Nameplate

NP2117L							
CAT.NO.	ECTM3708T						
SPEC.	37Q128Q067G1						
HP	5 AIR OVER						
VOLTS	230/460						
AMP	14.4/7.2						
RPM	1165						
FRAME	213TZ	HZ	60	PH	3		
SER.F.	1.00	CODE	K	DES	A	CL	F
NEMA-NOM-EFF	89.5	PF	71				
RATING	40C AMB-CONT						
CC							
DE	6307	ODE	6206				
ENCL	TEAO	SN					

AC Induction Motor Performance Data

Record # 66857

Typical performance - not guaranteed values

Winding: 37WGQ067-R003		Type: 3752M		Enclosure: TEAO	
Nameplate Data			460 V, 60 Hz: High Voltage Connection		
Rated Output (HP)	5 AIR OVER	Full Load Torque	22.568 LB-FT		
Volts	230/460	Start Configuration	direct on line		
Full Load Amps	14.4/7.2	Breakdown Torque	83.5 LB-FT		
R.P.M.	1165	Pull-up Torque	52.2 LB-FT		
Hz	60 Phase	3	Locked-rotor Torque	55.5 LB-FT	
NEMA Design Code	A KVA Code	K	Starting Current	55.3 A	
Service Factor (S.F.)		1	No-load Current	3.96 A	
NEMA Nom. Eff.	89.5 Power Factor	71	Line-line Res. @ 25°C	1.6583 Ω	
Rating - Duty	40C AMB-CONT		Temp. Rise @ Rated Load	60°C	
			Locked-rotor Power Factor	21.9	

Load Characteristics 460 V, 60 Hz, 5 HP

% of Rated Load	25	50	75	100	125	150
Power Factor	32	52	63	70	74	76
Efficiency	84.3	89.5	90.2	89.9	88.8	87.2
Speed	1191.7	1183.2	1174.3	1164.6	1153.5	1140.7
Line amperes	4.24	5.03	6.11	7.39	8.87	10.6

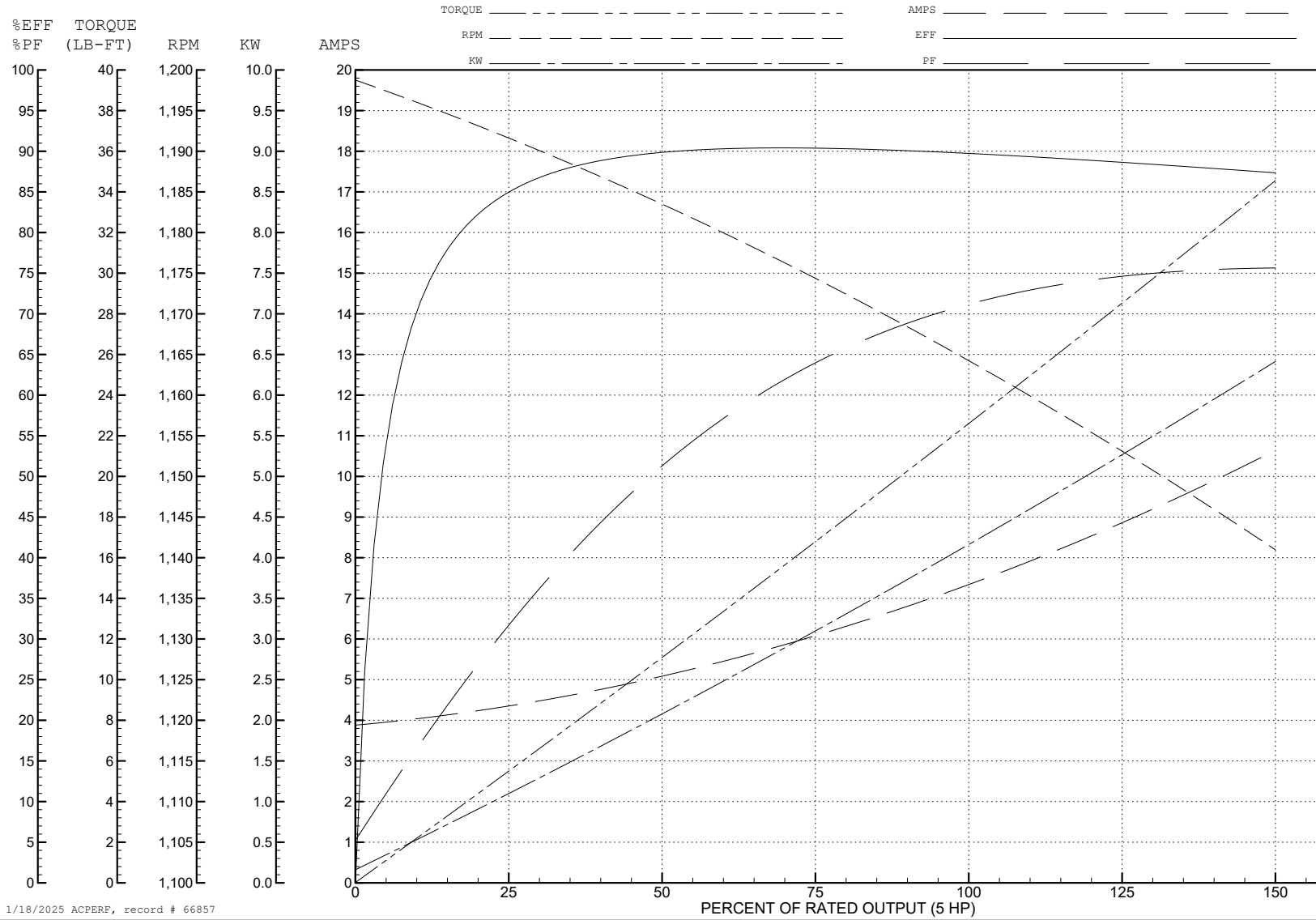
ABB Motors and Mechanical Inc.

WINDING # 37WGQ067

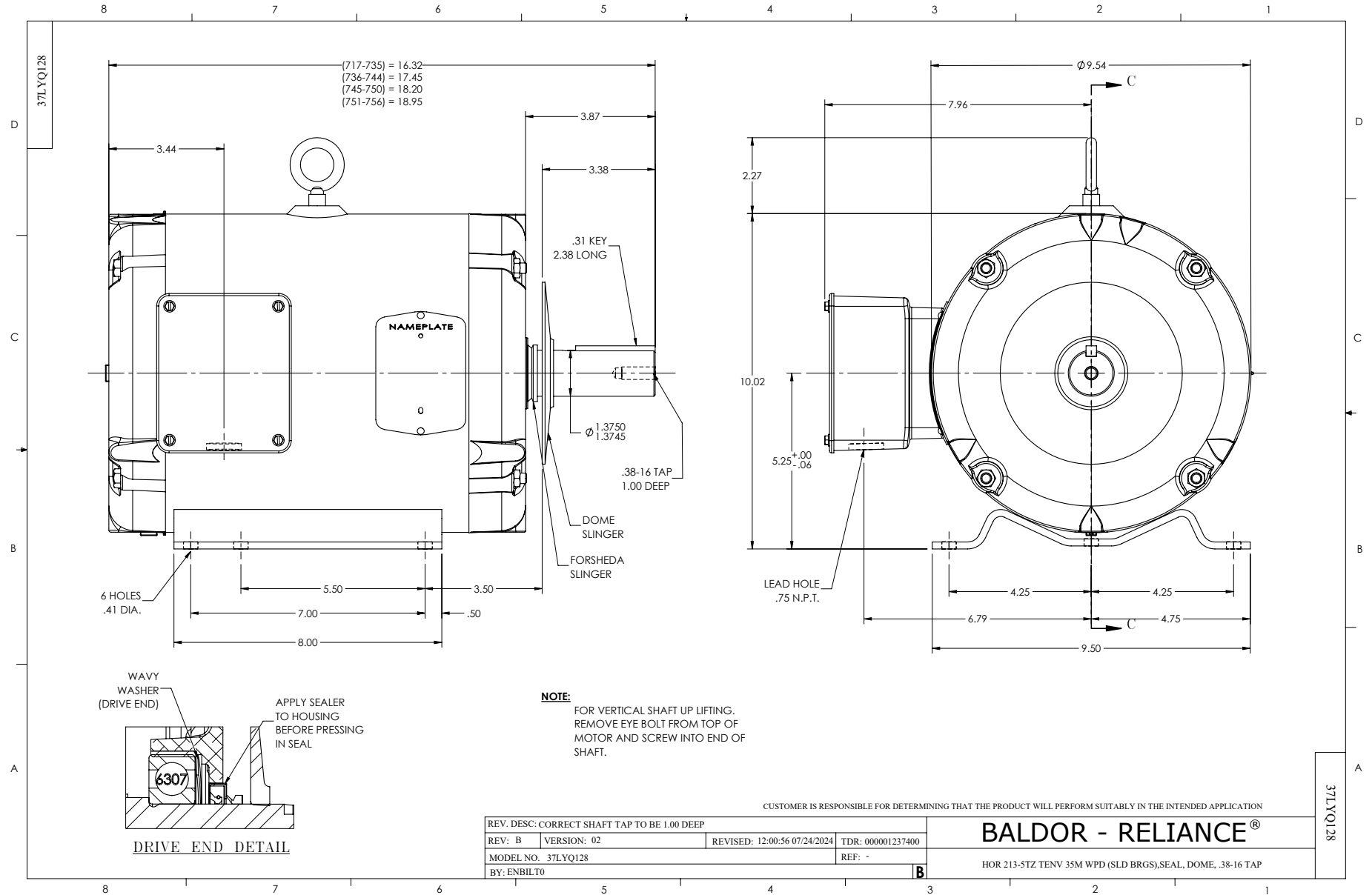
Typical performance - not guaranteed values.

5 HP 3 PH 60 HZ 1165 RPM 460 V 3752M

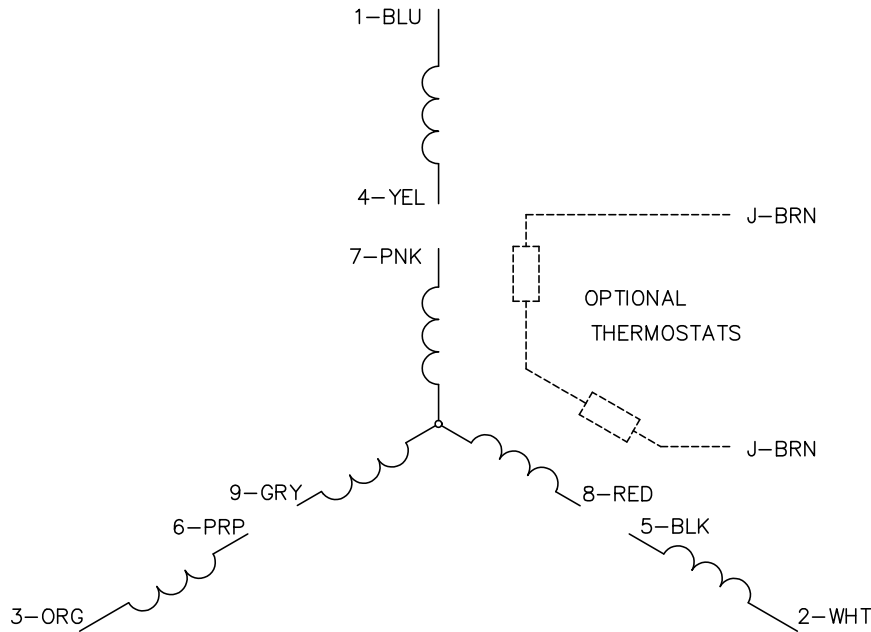
TORQUES (LB-FT): PO=83.5 PU=52.2 LR=55.5 LRA=55.3



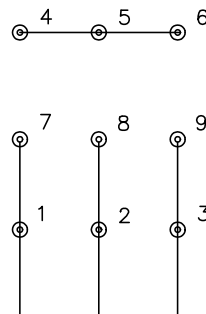
1/18/2025 ACPERF, record # 66857



CD0005

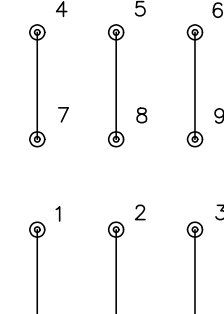


LOW VOLTAGE
(2Y)



LINE

HIGH VOLTAGE
(1Y)



LINE

NOTES:

1. INTERCHANGE ANY TWO LINE LEADS TO REVERSE ROTATION.
2. OPTIONAL THERMOSTATS ARE PROVIDED WHEN SPECIFIED.
3. ACTUAL NUMBER OF INTERNAL PARALLEL CIRCUITS MAY BE A MULTIPLE OF THOSE SHOWN ABOVE.
4. LEAD COLORS ARE OPTIONAL. LEADS MUST ALWAYS BE NUMBERED AS SHOWN.

CD0005

REV. DESC: REVISE TO SHOW OPTIONAL COLORS			
REV. LTR: E	BY: JLP	REVISED: 01/19/99 10:15	TDR: 0171435
S00000		FILE: AAA00005140	MDL: -
		MTL: -	

BALDOR ELECTRIC Co.

3PH, DV, 9 LEADS