

**BALDOR • RELIANCE**

---

# Customer information packet

## ECTM3708T-5

5 AIR OVERHP, 1160RPM, 3PH, 60HZ, 213TZ, 3750

Class - None

Division - Not Applicable

## Specifications

Enclosure	TEAO
Frame	213TZ
Frame Material	Steel
Frequency	60.00 Hz
Haz Area Class and Group	None
Haz Area Division	Not Applicable
Motor Letter Type	Three Phase
Output @ Frequency	5.000 HP @ 60 HZ
Phase	3
Synchronous Speed @ Frequency	1200 RPM @ 60 HZ
Voltage @ Frequency	575.0 V @ 60 HZ
Agency Approvals	UR CSA
Ambient Temperature	40 °C
Auxillary Box	No Auxillary Box
Auxillary Box Lead Termination	None
Base Indicator	Rigid
Bearing Grease Type	Polyrex EM (-20F +300F)
Blower	None
Current @ Voltage	5.600 A @ 575.0 V
Design Code	B
Drip Cover	No Drip Cover
Duty Rating	CONT
Efficiency @ 100% Load	89.5 %
Electrically Isolated Bearing	Not Electrically Isolated
Feedback Device	NO FEEDBACK
Front Face Code	Standard
Front Shaft Indicator	None
Heater Indicator	No Heater
High Voltage Full Load Amps	5.6 a
Insulation Class	F
Inverter Code	Inverter Ready

## Part detail

Revision	J
Type	AC
Mech. spec.	37Q128
Base	
Status	PRD/A
Elec. spec.	37WGQ036
Layout	37LYQ128
Eff. date	06-27-2024
CD Diagram	CD0006
Poles	06
Leads	3#14
Proprietary	False
Created date	01-04-2017

<b>KVA Code</b>	J
<b>Lifting Lugs</b>	Standard Lifting Lugs
<b>Locked Bearing Indicator</b>	No Locked Bearing
<b>Motor Lead Exit</b>	Ko Box
<b>Motor Lead Quantity/Wire Size</b>	3 @ 14 AWG
<b>Motor Lead Termination</b>	Flying Leads
<b>Motor Standards</b>	NEMA
<b>Motor Type</b>	3750M
<b>Mounting Arrangement</b>	F1
<b>Number of Poles</b>	6
<b>Overall Length</b>	18.20 IN
<b>Power Factor</b>	75
<b>Product Family</b>	WP Below Decks Marine Duty
<b>Pulley End Bearing Type</b>	Ball
<b>Pulley Face Code</b>	Standard
<b>Pulley Shaft Indicator</b>	Tapped & Key
<b>Rodent Screen</b>	None
<b>RoHS Status</b>	ROHS COMPLIANT
<b>Service Factor</b>	1.00
<b>Shaft Diameter</b>	1.375 IN
<b>Shaft Extension Location</b>	Pulley End
<b>Shaft Ground Indicator</b>	No Shaft Grounding
<b>Shaft Rotation</b>	Reversible
<b>Shaft Slinger Indicator</b>	Shaft Slinger
<b>Speed</b>	1160 rpm
<b>Speed Code</b>	Single Speed
<b>Starting Method</b>	Direct on line
<b>Thermal Device - Bearing</b>	None
<b>Thermal Device - Winding</b>	None
<b>Vibration Sensor Indicator</b>	No Vibration Sensor
<b>Winding Thermal 1</b>	None
<b>Winding Thermal 2</b>	None

**Nameplate**

<b>NP2117L</b>							
<b>CAT.NO.</b>	ECTM3708T-5						
<b>SPEC.</b>	37Q128Q036G1						
<b>HP</b>	5 AIR OVER						
<b>VOLTS</b>	575						
<b>AMP</b>	5.6						
<b>RPM</b>	1160						
<b>FRAME</b>	213TZ	<b>HZ</b>	60	<b>PH</b>	3		
<b>SER.F.</b>	1.00	<b>CODE</b>	J	<b>DES</b>	B	<b>CL</b>	F
<b>NEMA-NOM-EFF</b>	89.5	<b>PF</b>	75				
<b>RATING</b>	40C AMB-CONT						
<b>CC</b>							
<b>DE</b>	6307	<b>ODE</b>	6206				
<b>ENCL</b>	TEAO	<b>SN</b>					

**AC Induction Motor Performance Data**

Record # 61098

Typical performance - not guaranteed values

Winding: 37WGQ036-R001		Type: 3750M		Enclosure: TEAO	
<b>Nameplate Data</b>			<b>575 V, 60 Hz: Single Voltage Motor</b>		
Rated Output (HP)	5 AIR OVER	Full Load Torque	22.79 LB-FT		
Volts	575	Start Configuration	direct on line		
Full Load Amps	5.6	Breakdown Torque	64.92 LB-FT		
R.P.M.	1160	Pull-up Torque	43.16 LB-FT		
Hz	60 Phase	3	Locked-rotor Torque	48.19 LB-FT	
NEMA Design Code	B KVA Code	J	Starting Current	36.52 A	
Service Factor (S.F.)		1	No-load Current	2.49 A	
NEMA Nom. Eff.	89.5 Power Factor	75	Line-line Res. @ 25°C	2.94 Ω	
Rating - Duty	40C AMB-CONT		Temp. Rise @ Rated Load	56°C	
			Locked-rotor Power Factor	21.6	
			Rotor inertia	1.24 LB-FT <sup>2</sup>	

**Load Characteristics 575 V, 60 Hz, 5 HP**

% of Rated Load	25	50	75	100	125	150
Power Factor	40	60	70	75	77	77
Efficiency	85.9	90	90.2	89.8	88.2	85.2
Speed	1191	1181	1170	1158	1144	1125
Line amperes	2.77	3.48	4.46	5.58	6.93	8.59

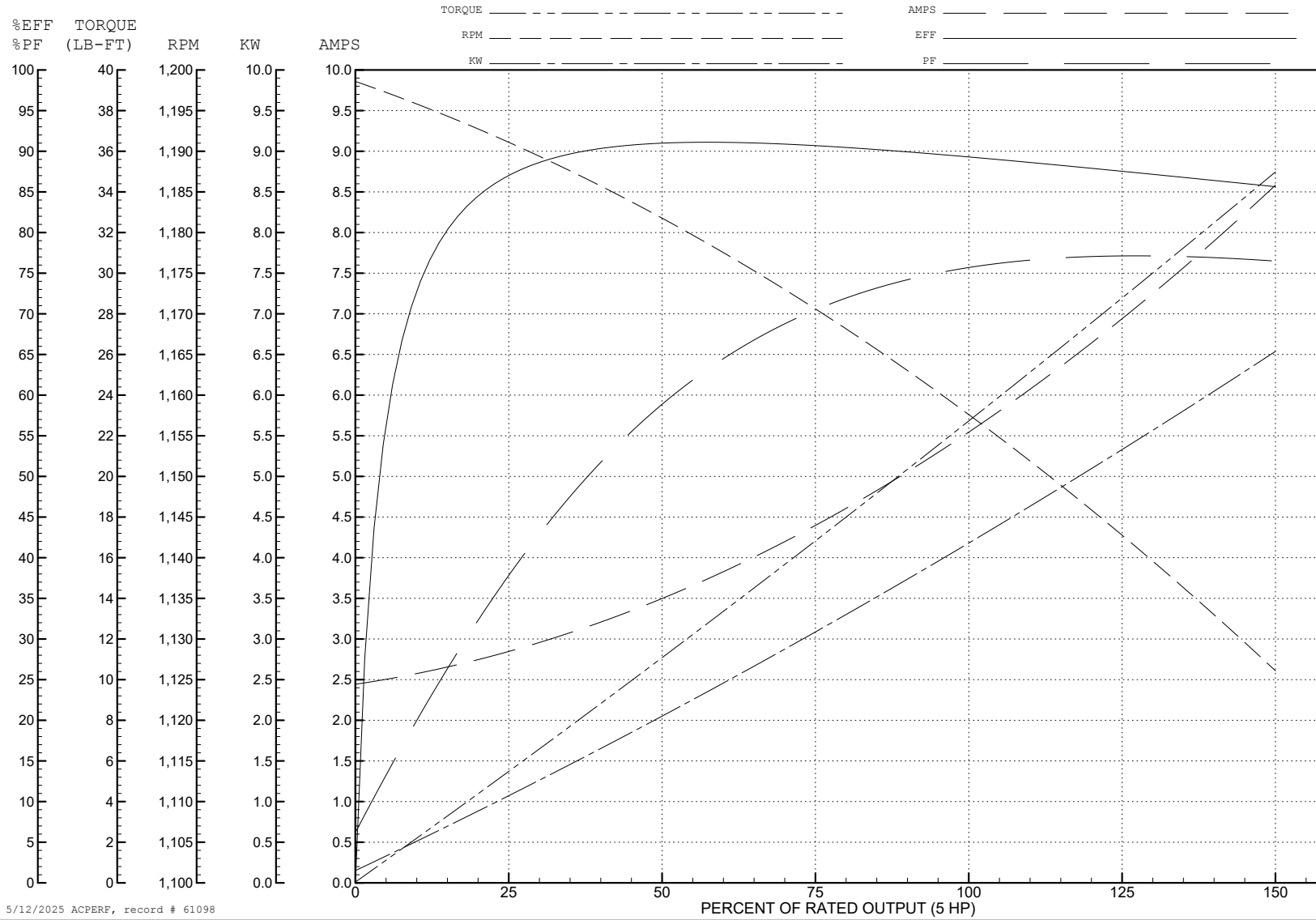
ABB Motors and Mechanical Inc.

WINDING # 37WGQ036

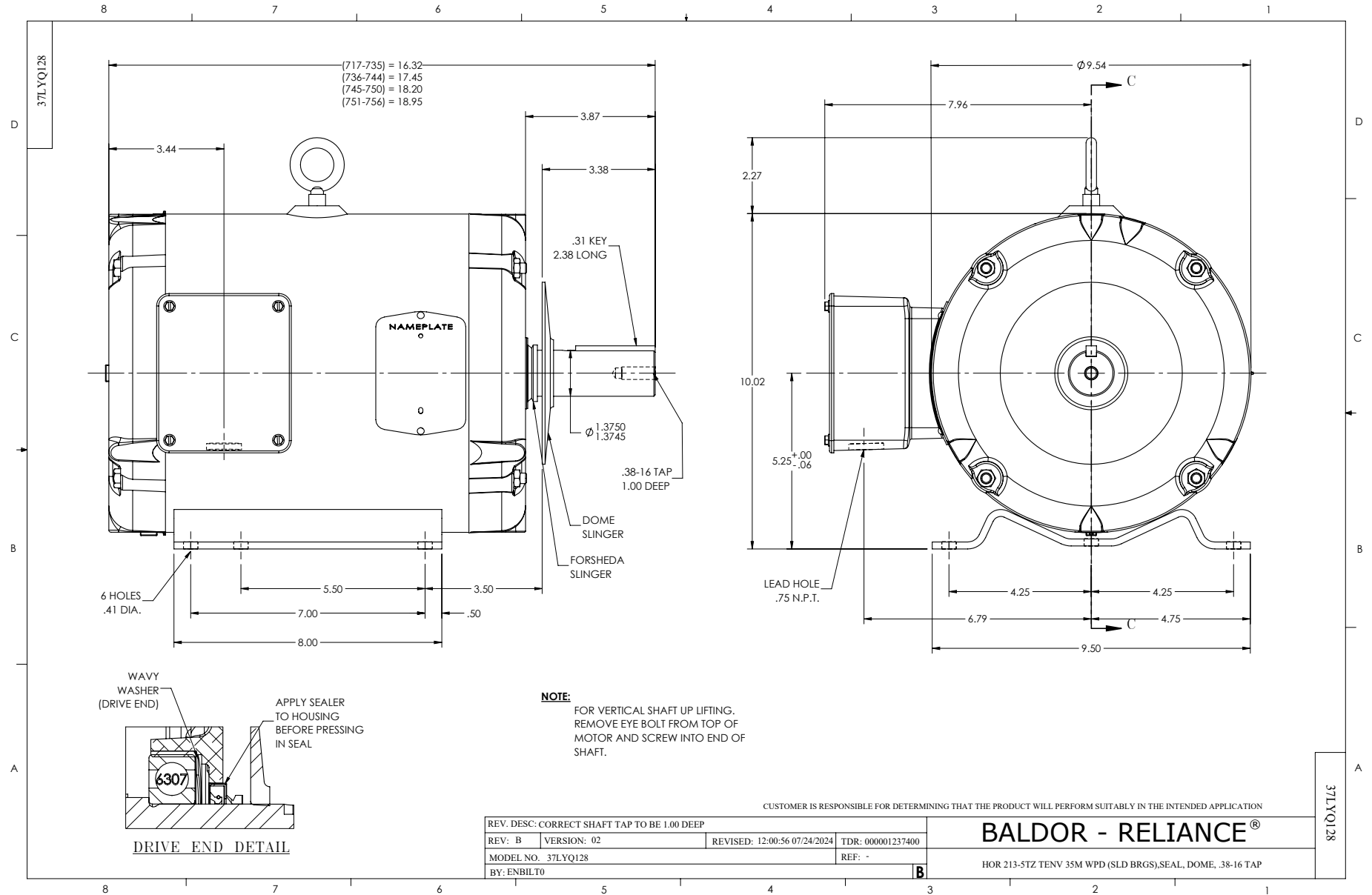
Typical performance - not guaranteed values.

5 HP 3 PH 60 HZ 1160 RPM 575 V 3750M

TORQUES (LB-FT): PO=64.92 PU=43.16 LR=48.19 LRA=36.52



5/12/2025 ACPERF, record # 61098



CD0006



NOTES:

1. THREE LEAD MOTOR MAY BE EITHER WYE CONNECTED OR DELTA CONNECTED.
2. INTERCHANGE ANY TWO LINE LEADS TO REVERSE ROTATION.
3. OPTIONAL THERMOSTATS ARE PROVIDED WHEN SPECIFIED.
4. ACTUAL NUMBER OF INTERNAL PARALLEL CIRCUITS MAY VARY.
5. LEAD COLORS ARE OPTIONAL. LEADS MUST BE NUMBERED AS SHOWN.

CD0006

REV. DESC: ADD CLASS CONN00000007		
REV. LTR: E	VERSION: 01	TDR: 000001099922
FILE: \AAA\00005\141	REVISED: 10:24:49 02/19/2019	BY: ENBRIRO
MTL: -	© □	

**BALDOR - RELIANCE®**

3PH, SV, 3 LEADS, WYE OR DELTA CONNECTED

SH 1 of 1