

BALDOR • RELIANCE

Customer information packet

ECTM3704T

3 AIR OVERHP, 1160RPM, 3PH, 60HZ, 213TZ, 3738

Class - None

Division - Not Applicable

Specifications

Enclosure	TEAO
Frame	213TZ
Frame Material	Steel
Frequency	60.00 Hz
Haz Area Class and Group	None
Haz Area Division	Not Applicable
Motor Letter Type	Three Phase
Output @ Frequency	3.000 HP @ 60 HZ
Phase	3
Synchronous Speed @ Frequency	1200 RPM @ 60 HZ
Voltage @ Frequency	230.0 V @ 60 HZ 460.0 V @ 60 HZ
Agency Approvals	UR CSA
Ambient Temperature	40 °C
Auxillary Box	No Auxillary Box
Auxillary Box Lead Termination	None
Base Indicator	Rigid
Bearing Grease Type	Polyrex EM (-20F +300F)
Blower	None
Current @ Voltage	4.600 A @ 460.0 V 9.200 A @ 230.0 V 9.600 A @ 208.0 V
Design Code	B
Drip Cover	No Drip Cover
Duty Rating	CONT
Efficiency @ 100% Load	89.5 %
Electrically Isolated Bearing	Not Electrically Isolated
Feedback Device	NO FEEDBACK
Front Face Code	Standard
Front Shaft Indicator	None
Heater Indicator	No Heater

Part detail

Revision	H
Type	AC
Mech. spec.	37Q128
Base	
Status	PRD/A
Elec. spec.	37WGS519
Layout	37LYQ128
Eff. date	06-27-2024
CD Diagram	CD0005
Poles	06
Leads	9#14
Proprietary	False
Created date	01-04-2017

High Voltage Full Load Amps	4.6 a
Insulation Class	F
Inverter Code	Inverter Ready
KVA Code	L
Lifting Lugs	Standard Lifting Lugs
Locked Bearing Indicator	No Locked Bearing
Motor Lead Exit	Ko Box
Motor Lead Quantity/Wire Size	9 @ 14 AWG
Motor Lead Termination	Flying Leads
Motor Standards	NEMA
Motor Type	3738M
Mounting Arrangement	F1
Number of Poles	6
Overall Length	17.45 IN
Power Factor	68
Product Family	WP Below Decks Marine Duty
Pulley End Bearing Type	Ball
Pulley Face Code	Standard
Pulley Shaft Indicator	Tapped & Key
Rodent Screen	None
RoHS Status	ROHS COMPLIANT
Service Factor	1.00
Shaft Diameter	1.375 IN
Shaft Extension Location	Pulley End
Shaft Ground Indicator	No Shaft Grounding
Shaft Rotation	Reversible
Shaft Slinger Indicator	Shaft Slinger
Speed	1160 rpm
Speed Code	Single Speed
Starting Method	Direct on line
Thermal Device - Bearing	None
Thermal Device - Winding	None
Vibration Sensor Indicator	No Vibration Sensor
Winding Thermal 1	None

Winding Thermal 2

None

Nameplate

NP2117L							
CAT.NO.	ECTM3704T						
SPEC.	37Q128S519G1						
HP	3 AIR OVER						
VOLTS	230/460						
AMP	9.2/4.6						
RPM	1160						
FRAME	213TZ	HZ	60	PH	3		
SER.F.	1.00	CODE	L	DES	B	CL	F
NEMA-NOM-EFF	89.5	PF	68				
RATING	40C AMB-CONT						
CC							
DE	6307	ODE	6206				
ENCL	TEAO	SN					

AC Induction Motor Performance Data

Record # 61099

Typical performance - not guaranteed values

Winding: 37WGS519-R040		Type: 3738M		Enclosure: TEAO		
Nameplate Data			460 V, 60 Hz: High Voltage Connection			
Rated Output (HP)	3 AIR OVER		Full Load Torque	13.61 LB-FT		
Volts	230/460		Start Configuration	direct on line		
Full Load Amps	9.2/4.6		Breakdown Torque	43.8 LB-FT		
R.P.M.	1160		Pull-up Torque	20.43 LB-FT		
Hz	60	Phase	3	Locked-rotor Torque	25.89 LB-FT	
NEMA Design Code	B		KVA Code	L	Starting Current	28.09 A
Service Factor (S.F.)	1		No-load Current	2.67 A		
NEMA Nom. Eff.	89.5	Power Factor	68	Line-line Res. @ 25°C	2.67 Ω	
Rating - Duty	40C AMB-CONT		Temp. Rise @ Rated Load			
			Locked-rotor Power Factor	22.9		
			Rotor inertia	0.945 LB-FT ²		

Load Characteristics 460 V, 60 Hz, 3 HP

% of Rated Load	25	50	75	100	125	150
Power Factor	31	51	63	70	74	77
Efficiency	81.9	86.9	89	88.2	86.9	84.5
Speed	1189	1180	1170	1158	1144	1129
Line amperes	2.77	3.18	3.8	4.57	5.47	6.47

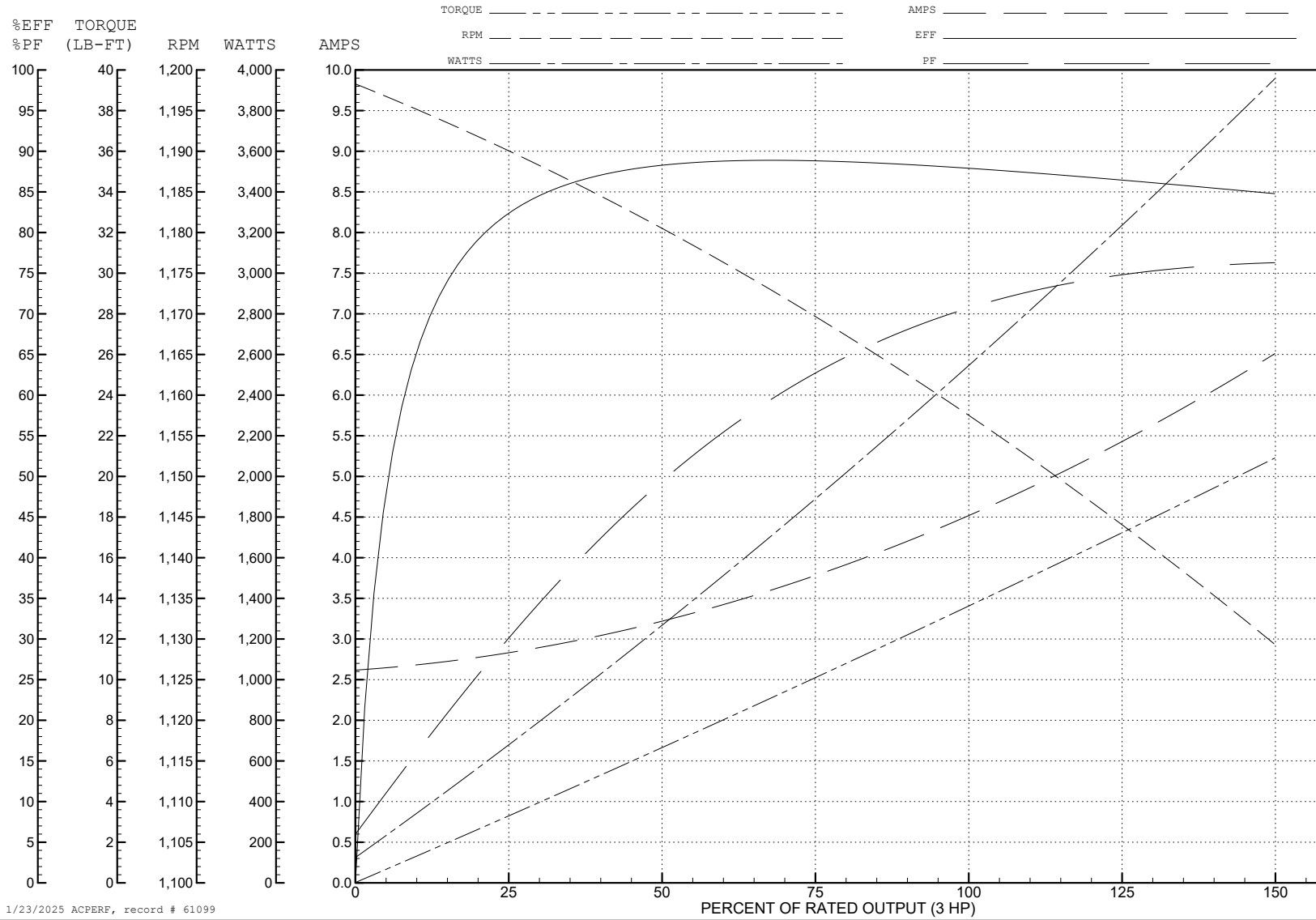
ABB Motors and Mechanical Inc.

WINDING # 37WGS519

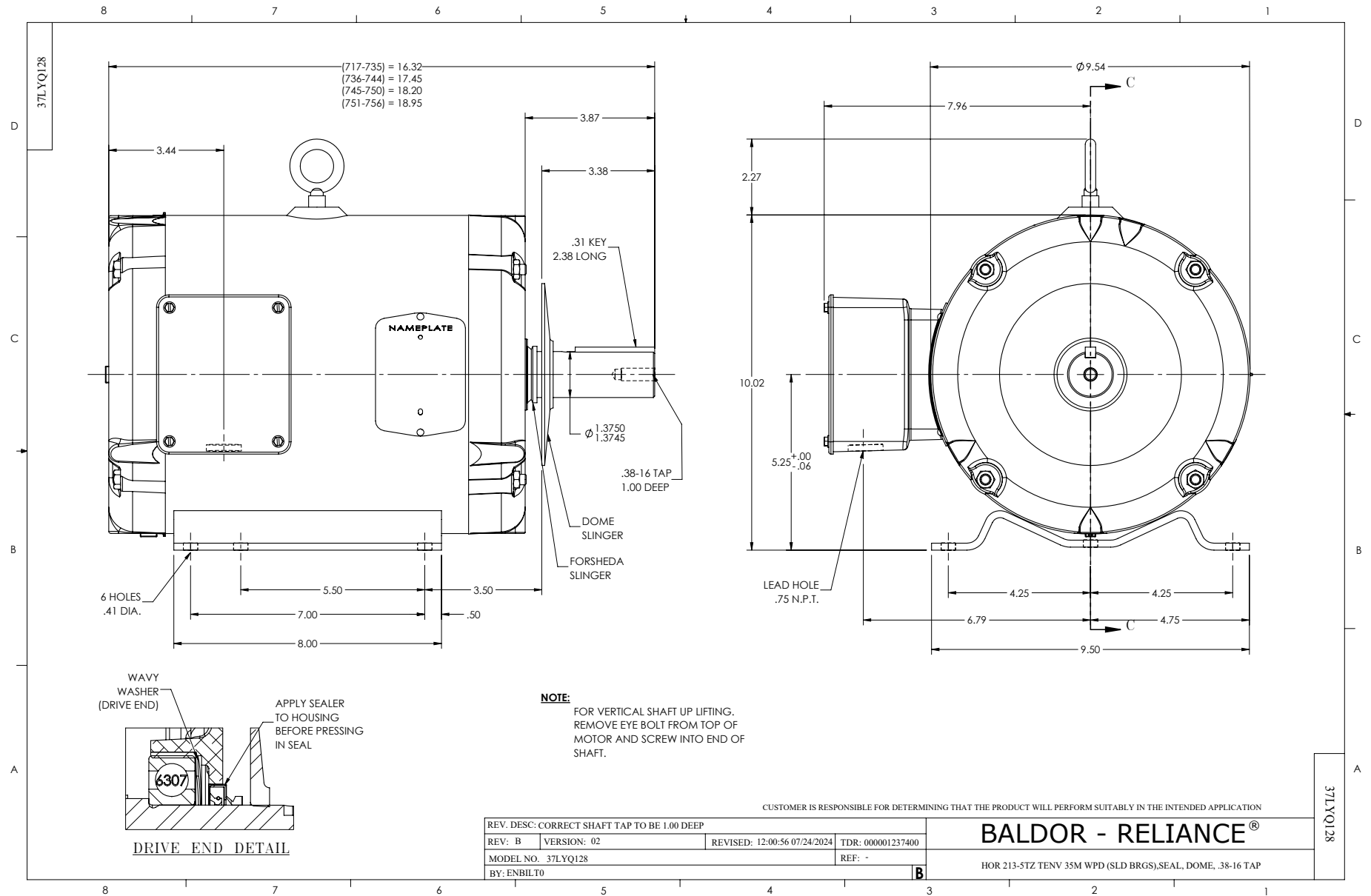
3 HP 3 PH 60 HZ 1160 RPM 460 V 3738M

Typical performance - not guaranteed values.

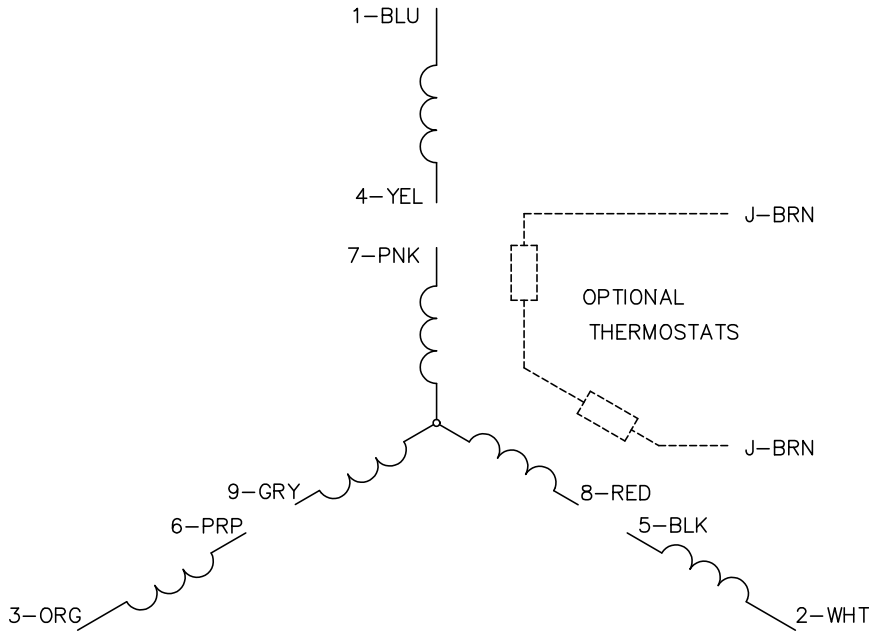
TORQUES (LB-FT): PO=43.8 PU=20.43 LR=25.89 LRA=28.09



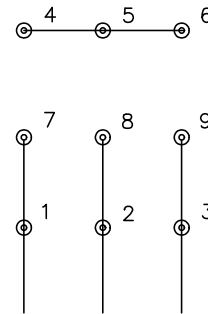
1/23/2025 ACPERF, record # 61099



CD0005

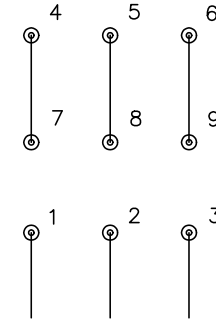


LOW VOLTAGE
(2Y)



LINE

HIGH VOLTAGE
(1Y)



LINE

NOTES:

1. INTERCHANGE ANY TWO LINE LEADS TO REVERSE ROTATION.
2. OPTIONAL THERMOSTATS ARE PROVIDED WHEN SPECIFIED.
3. ACTUAL NUMBER OF INTERNAL PARALLEL CIRCUITS MAY BE A MULTIPLE OF THOSE SHOWN ABOVE.
4. LEAD COLORS ARE OPTIONAL. LEADS MUST ALWAYS BE NUMBERED AS SHOWN.

CD0005

REV. DESC: REVISE TO SHOW OPTIONAL COLORS

REV. LTR: E BY: JLP REVISED: 01/19/99 10:15 TDR: 0171435

500000

FILE: AAA00005140

MDL: -

MTL: -

BALDOR ELECTRIC Co.

3PH, DV, 9 LEADS